

**SAW Filter 350.0MHz**  
**Part No: MP03633**

**Model: TB0706A**  
**Rev No: 1**

**A. MAXIMUM RATING:**

1. Operating Temperature: -25°C to +70°C
2. Storage Temperature: -40°C to +85°C
3. Maximum Input Power: 10dBm

**B. ELECTRICAL CHARACTERISTICS:**

Ambient Temperature: 25°C

Item	Unit	Min.	Typ.	Max.
Center frequency Fc	MHz	-	350	-
Insertion loss at Fc	dB	-	14.6	18
Bandwidth at -1.5dB	MHz	31.0	35.1	-
Bandwidth at -6.0dB	MHz	-	41.4	43.0
Bandwidth at -25.0dB	MHz	-	48.0	50.0
Amplitude Ripple (Fc ± 15.0MHz)	dB	-	1.1	1.4
Group Delay Ripple (Fc ± 15.0MHz)	nS	-	30	100
Absolute Group delay at Fc	nS	-	320	-
Temp Coefficient	ppm/°C	-	-18	-

**SAW Filter 350.0MHz**  
**Part No: MP03633**

**Model: TB0706A**  
**Rev No: 1**

**C. FREQUENCY CHARACTERISTICS:**

1. S21 wide-band Response: (span 400MHz)

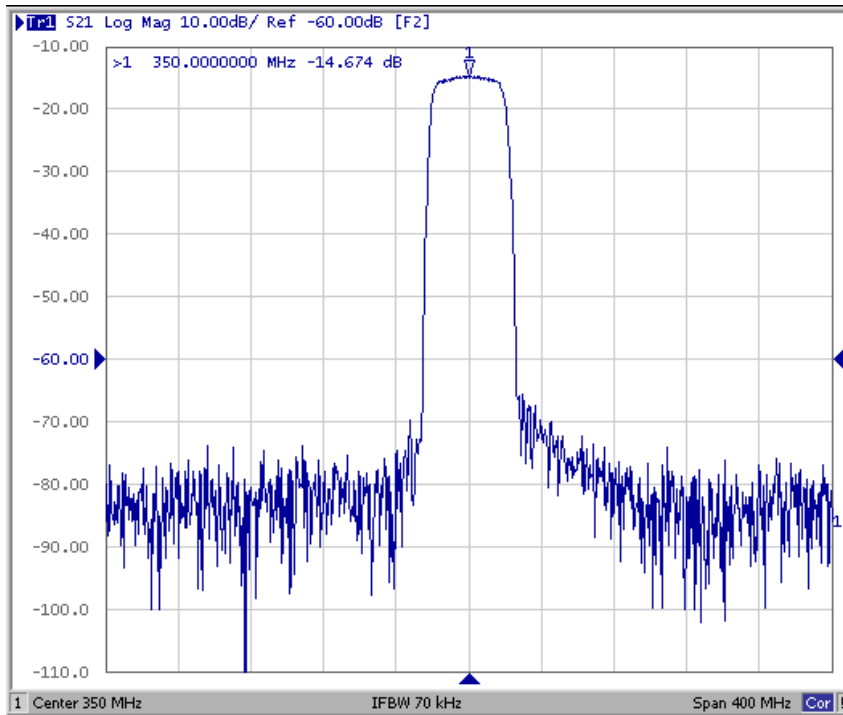


Fig. 1. Horizontal: 40MHz/Div, Vertical: 10dB/Div

2. S21 pass-band Response: (span 60MHz)

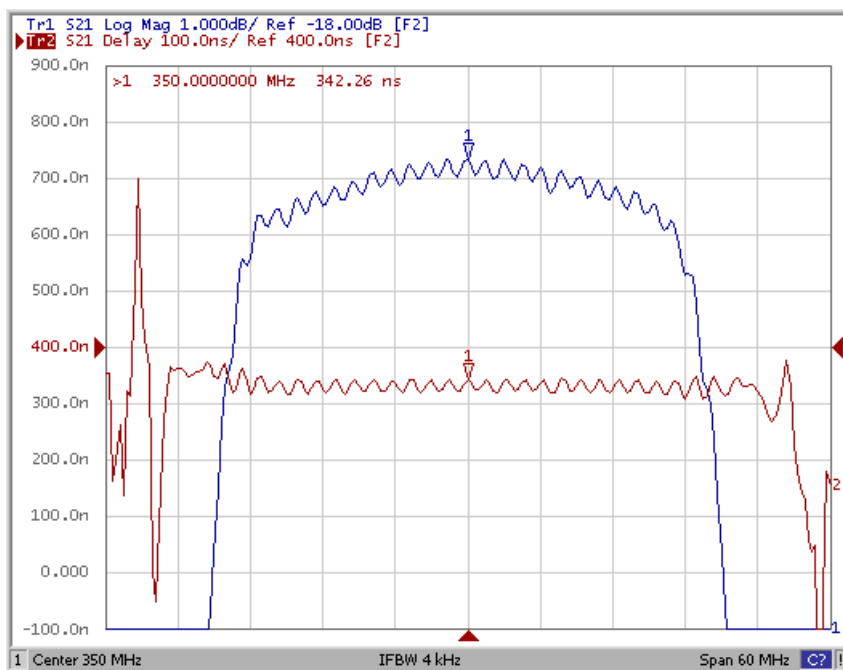
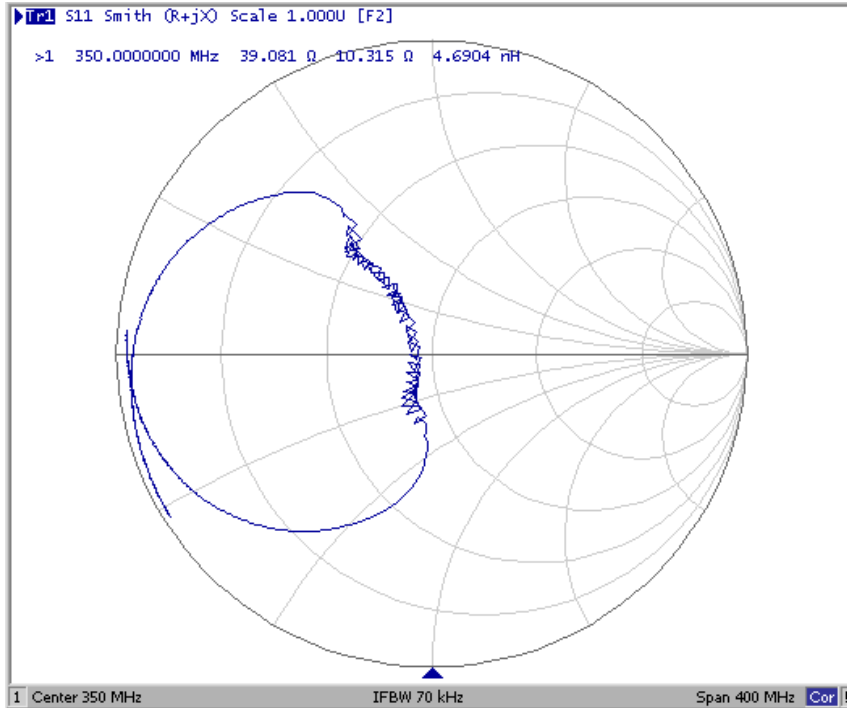


Fig. 2. Horizontal: 6MHz/Div, Vertical: 1dB/Div

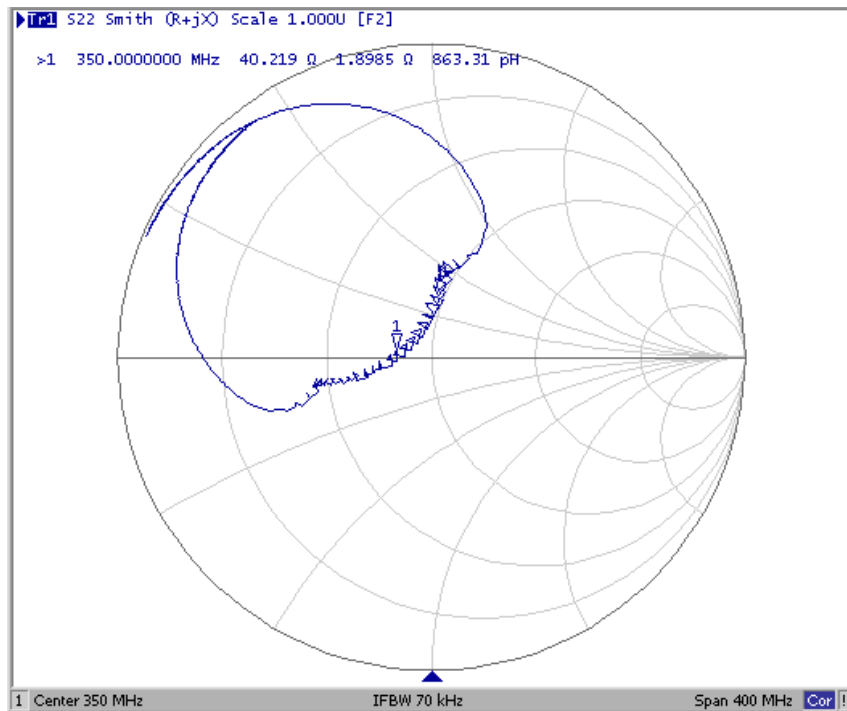
**SAW Filter 350.0MHz**  
**Part No: MP03633**

**Model: TB0706A**  
**Rev No: 1**

3. S11 Smith-Chart: (span 400MHz)



4. S22 Smith-Chart: (span 400MHz)

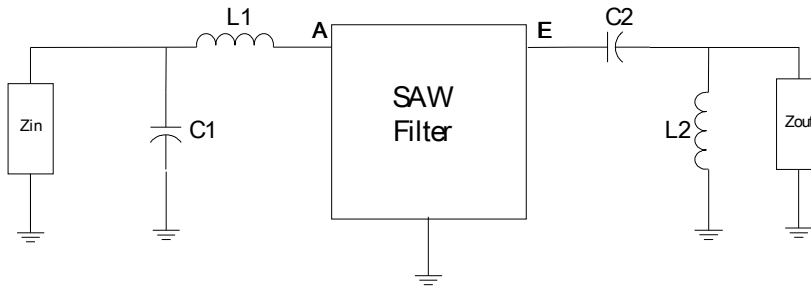


**SAW Filter 350.0MHz**  
**Part No: MP03633**

**Model: TB0706A**  
**Rev No: 1**

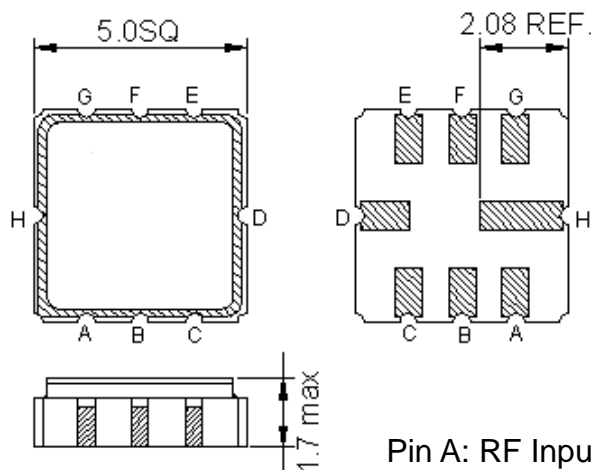
**D. MEASUREMENT CIRCUIT:**

Single ended input 50Ω to Single ended Output 50Ω



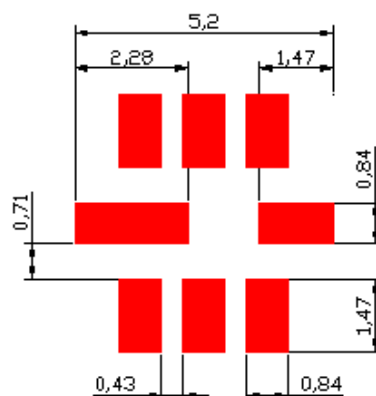
$C1 = 30\text{pF}$ ,  $L1 = 6.8\text{nH}$ ,  $C2 = 10\text{pF}$ ,  $L2 = 5.6\text{nH}$

**E. OUTLINE DRAWING:**



Pin A: RF Input  
 Pin E: RF Output  
 Pin B, C, D, F, G, H: Ground  
 Unit: mm

**F. PCB FOOTPRINT:**

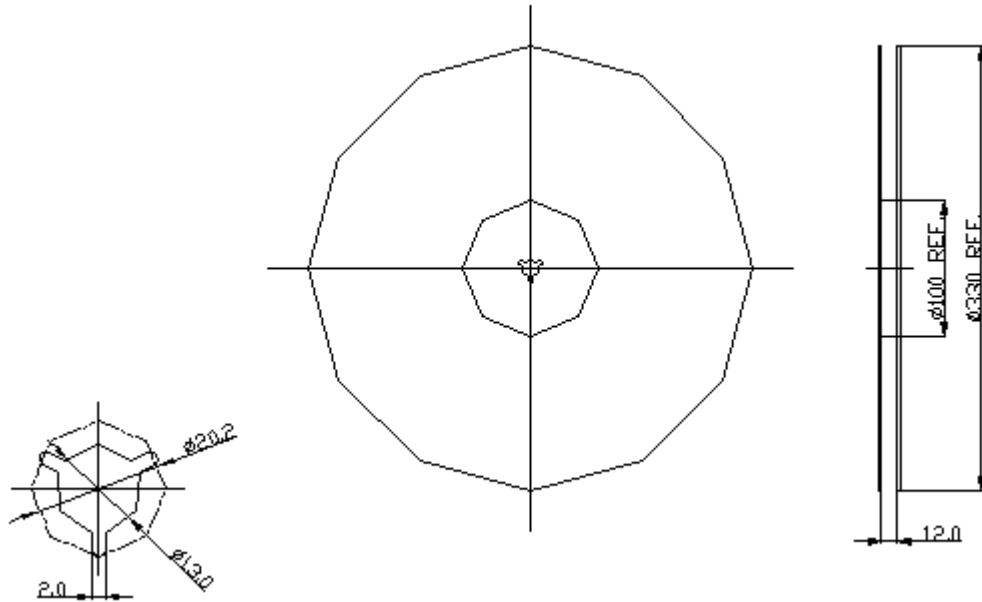


**SAW Filter 350.0MHz**  
**Part No: MP03633**

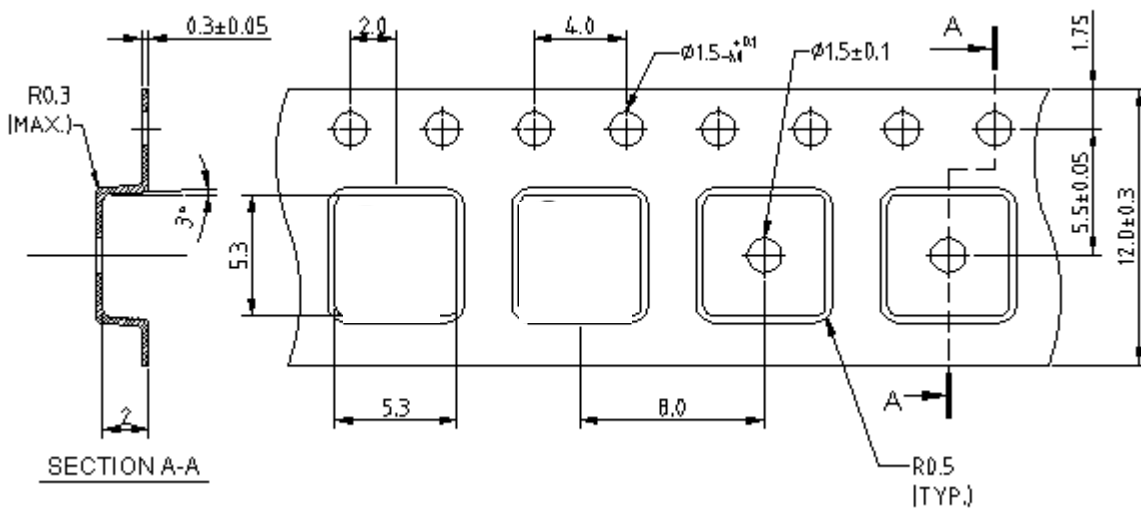
**Model: TB0706A**  
**Rev No: 1**

**G. PACKING:**

**1. REEL DIMENSION**



**2. TAPE DIMENSION**



**SAW Filter 350.0MHz**  
**Part No: MP03633**

**Model: TB0706A**  
**Rev No: 1**

**H. RECOMMENDED REFLOW PROFILE:**

