

SAW Filter 350.0MHz
Part No: MP03634

Model: TB0672A
Rev No: 1

A. MAXIMUM RATINGS:

1. Input Power Level: 10dBm
2. Operating Temperature: -40°C ~ 85°C
3. Storage Temperature: -40°C to 85°C

B. ELECTRICAL CHARACTERISTICS:

Ambient Temperature: 25°C

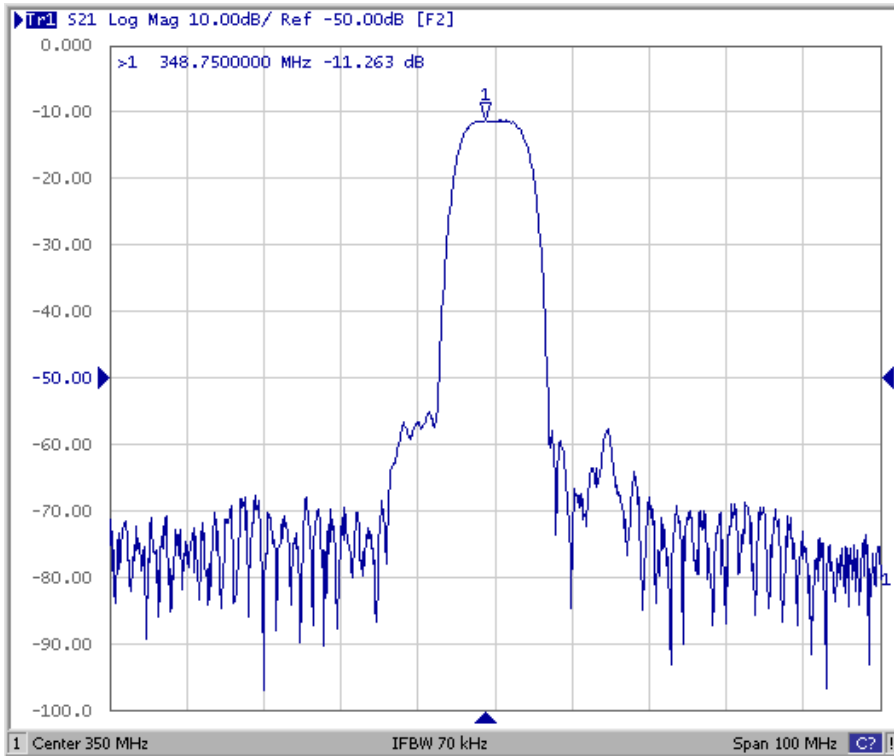
Characteristics	Min.	Typ.	Max.
Center frequency Fc MHz	-	350.0	-
Maximum Insertion loss IL dB	-	11.2	12.5
1dB Bandwidth MHz	5	6.5	-
3dB Bandwidth MHz	-	7.9	-
35dB Bandwidth MHz	-	14.0	16.0
Passband Ripple in Fc ± 2.5MHz dB	-	0.4	1.0
S11 Return Loss Fc ± 2.5MHz dB	-	9.0	-
Temp Coefficient ppm/°C		-18	
Attenuation: (Reference level from minimum insertion loss)			
245 ~ 320MHz dB	40	56	-
370 ~ 445MHz dB	40	56	-

SAW Filter 350.0MHz
Part No: MP03634

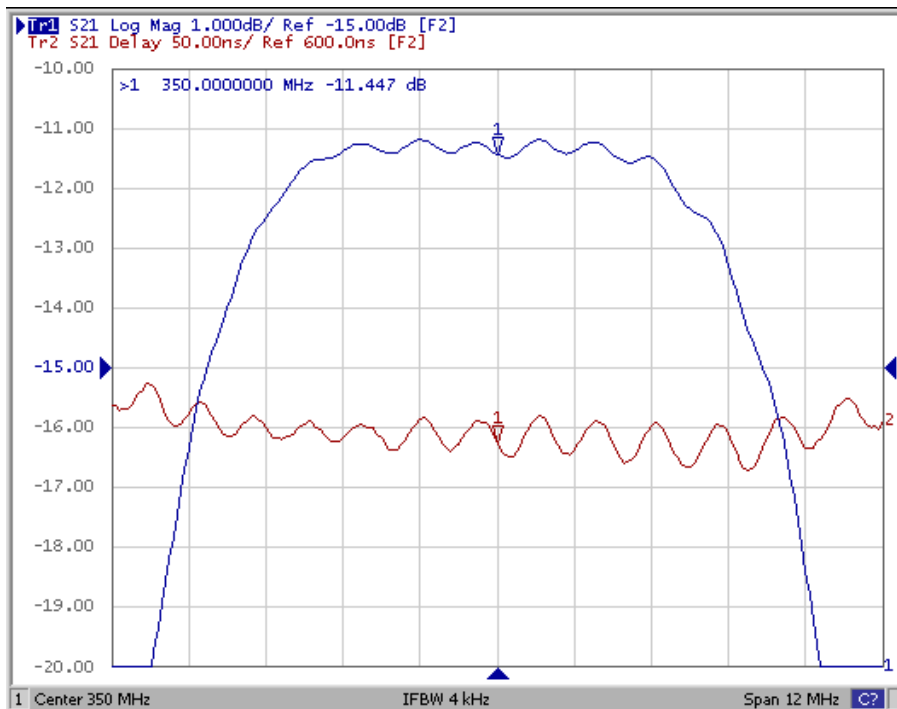
Model: TB0672A
Rev No: 1

C. FREQUENCY CHARACTERISTICS:

1. S21 Response: (span 100MHz)



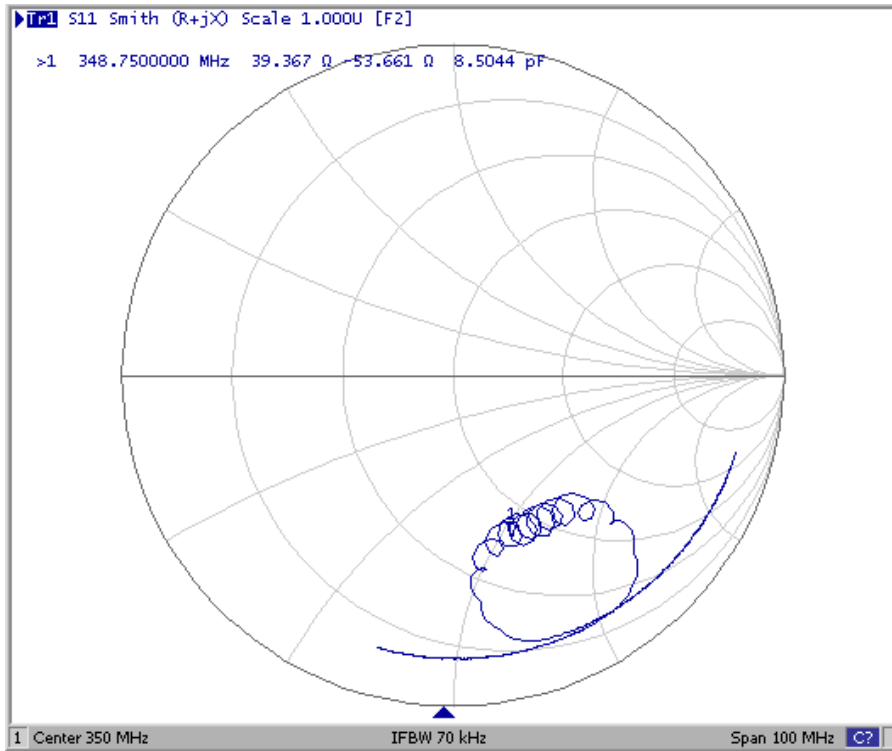
2. Passband Response: (span 12MHz)



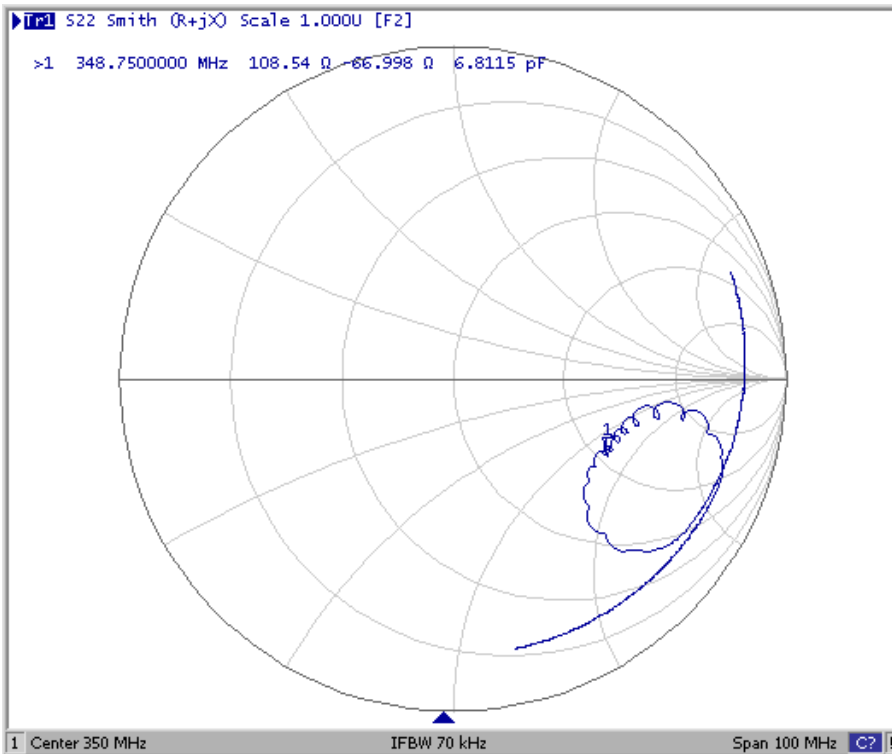
SAW Filter 350.0MHz
Part No: MP03634

Model: TB0672A
Rev No: 1

3. S11 Smith-Chart: (span 100MHz)



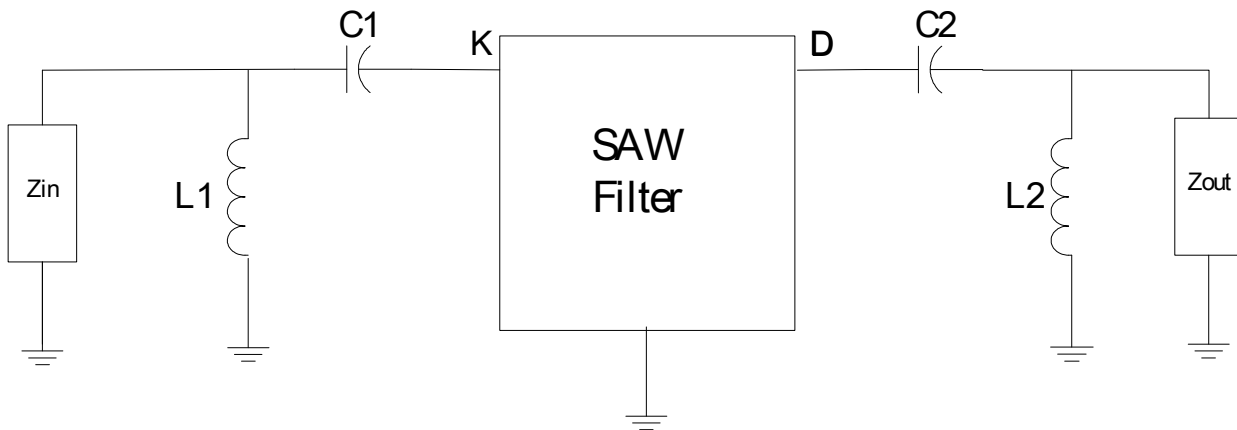
4. S22 Smith-Chart: (span 100MHz)



SAW Filter 350.0MHz
Part No: MP03634

Model: TB0672A
Rev No: 1

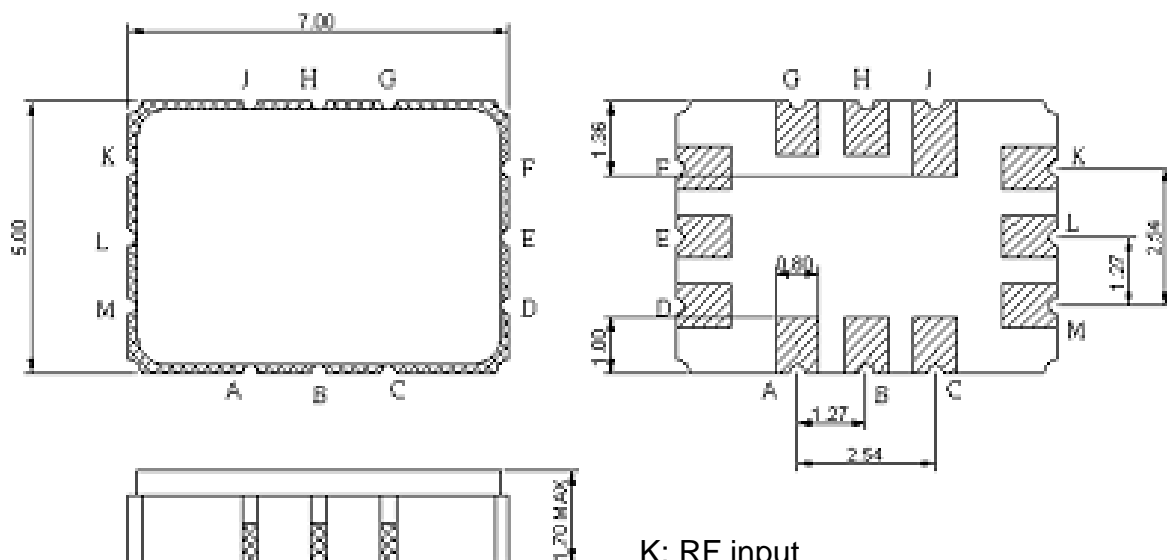
D. TEST CIRCUIT:



$$Z_{IN} = Z_{OUT} = 50\Omega$$

$$L1 = 27\text{nH}, C1 = 57\text{pF}, L2 = 18\text{nH}, C2 = 68\text{pF}$$

E. OUTLINE DRAWING:



K: RF input
 D: RF output
 L, M, A, B, C, E, F, G, H, I: Ground
 Unit: mm

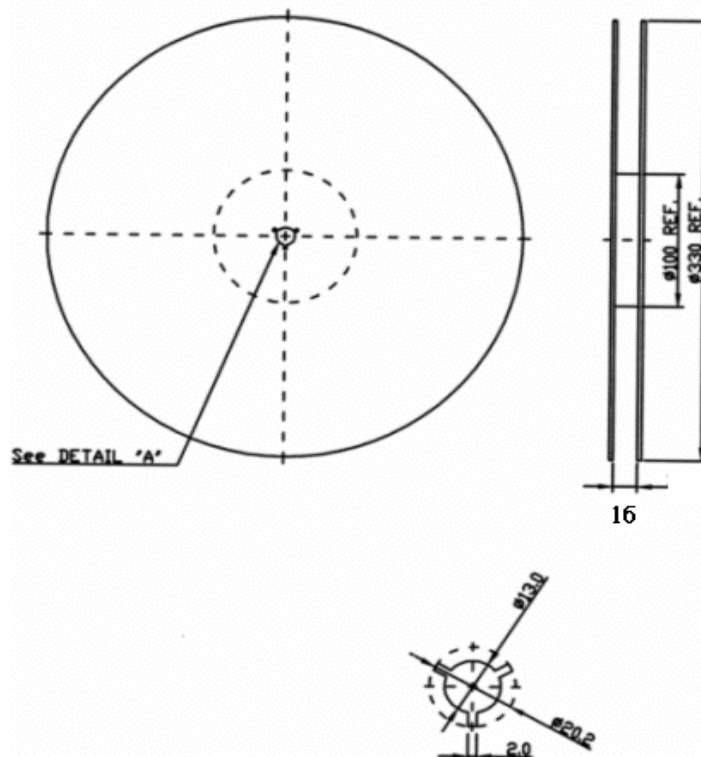
SAW Filter 350.0MHz
Part No: MP03634

Model: TB0672A
Rev No: 1

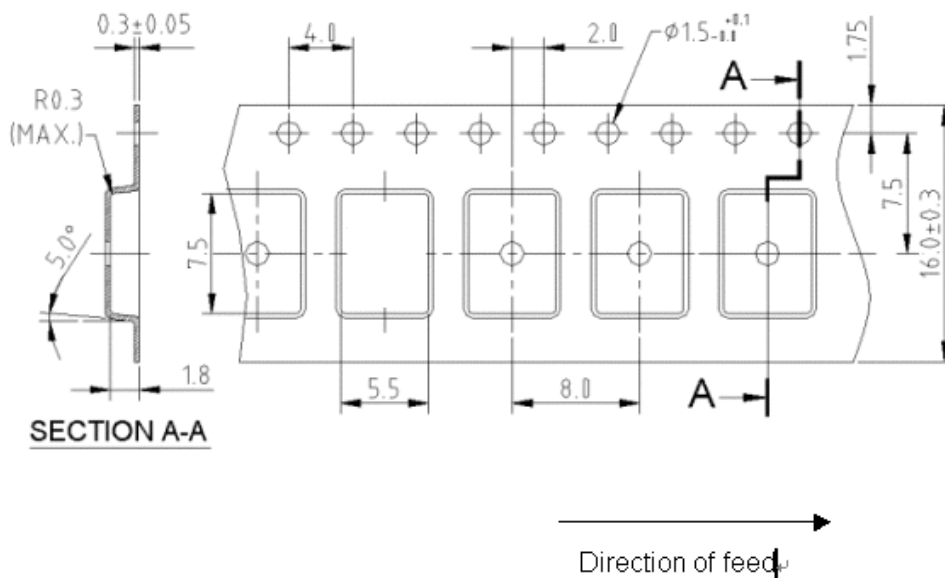
F. PACKING:

1. REEL DIMENSION

(Reel Count: 7" = 1000 typ; 13" = 2000 typ)



2. TAPE DIMENSION



SAW Filter 350.0MHz
Part No: MP03634

Model: TB0672A
Rev No: 1

G. RECOMMENDED REFLOW PROFILE:

