

**SAW Filter 425.0MHz**  
**Part No: MP03701**

**Model: TB0784A**  
**Rev No: 2**

**A. MAXIMUM RATING:**

1. Operating Temperature: -40°C ~ +85°C
2. Storage Temperature: -54°C ~ +85°C
3. Input power: 10dBm

**B. CHARACTERISTICS:**

Ambient Temperature: 25°C

Characteristics	Value		
	Min.	Typ.	Max.
Center frequency Fc MHz	-	425	-
Minimum Insertion loss IL dB	-	6.5	9.5
1dB BW Lower Frequency MHz	0.5	0.9	-
Passband Ripple (Fc ± 250kHz) dB	-	0.3	1.0
Fc + 3 ~ Fc + 200MHz dB	40	46	-
Fc - 3 ~ Fc - 200MHz dB	40	45	-
Temp Coefficient ppm/K	-	-0.032	-

**SAW Filter 425.0MHz**  
**Part No: MP03701**

**Model: TB0784A**  
**Rev No: 2**

**C. FREQUENCY CHARACTERISTICS:**

1. S21 Response: (span: 50MHz)

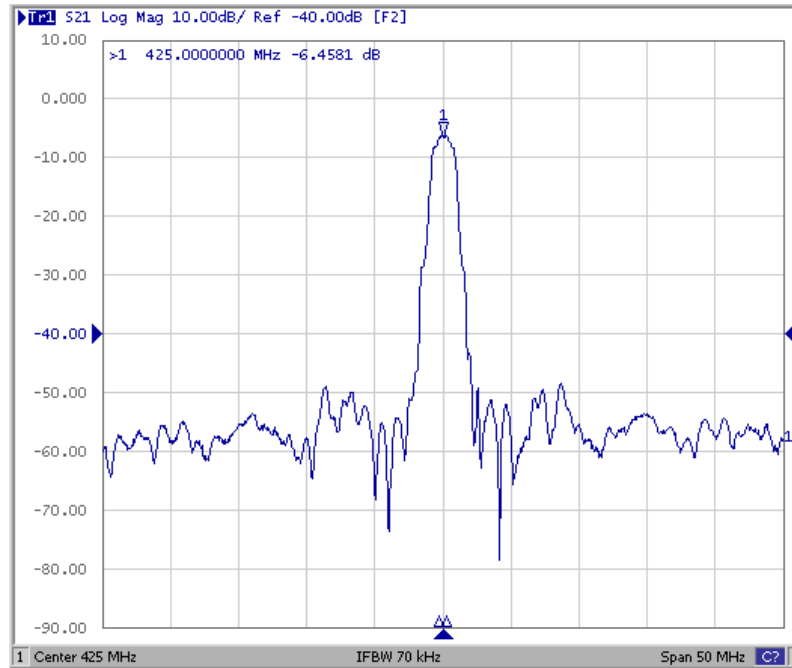


Fig. 1. Horizontal: 5MHz/Div, Vertical: 10dB/Div

2. Group-Delay Ripple: (span: 10MHz)

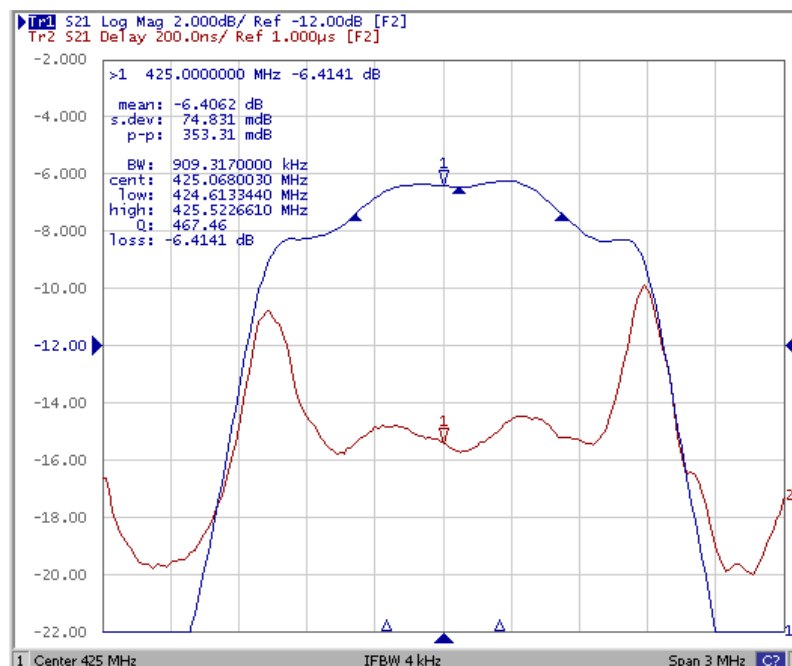
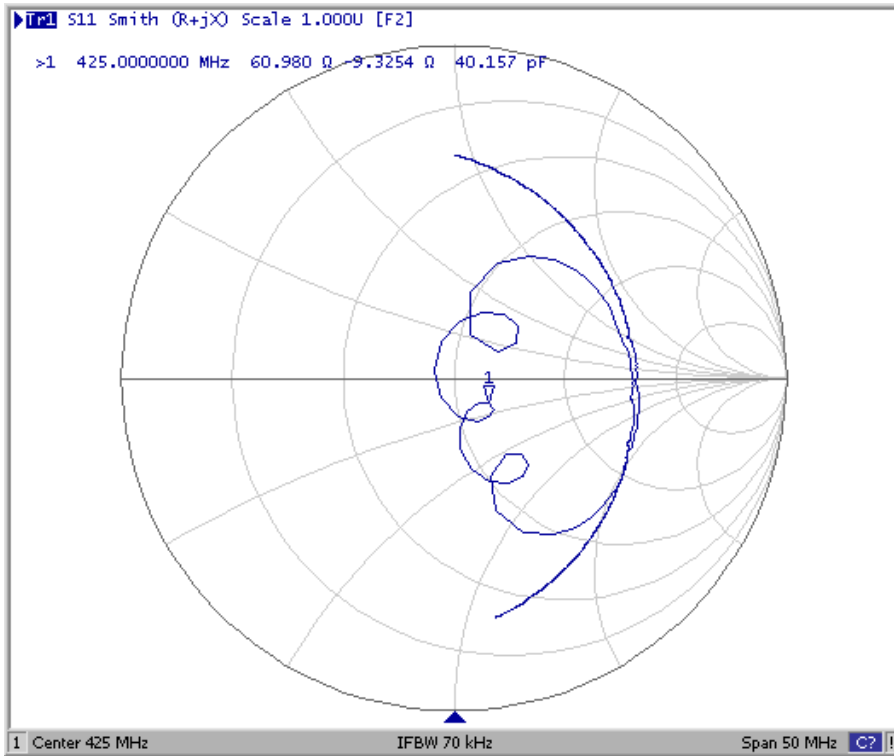


Fig. 2. Horizontal: 0.3MHz/Div, Vertical: 200nec/Div

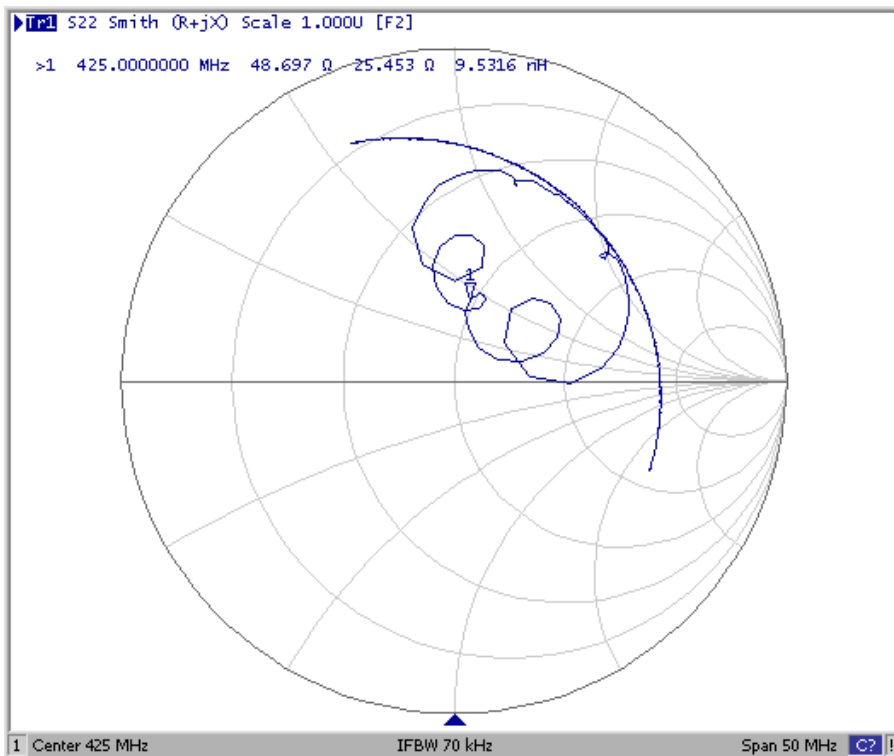
**SAW Filter 425.0MHz**  
**Part No: MP03701**

**Model: TB0784A**  
**Rev No: 2**

3. S11 Smith Chart: (span: 50MHz)



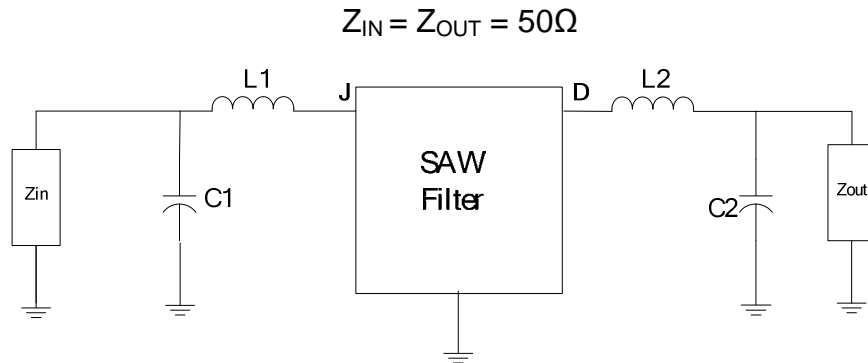
4. S22 Smith Chart (span: 50MHz)



**SAW Filter 425.0MHz**  
**Part No: MP03701**

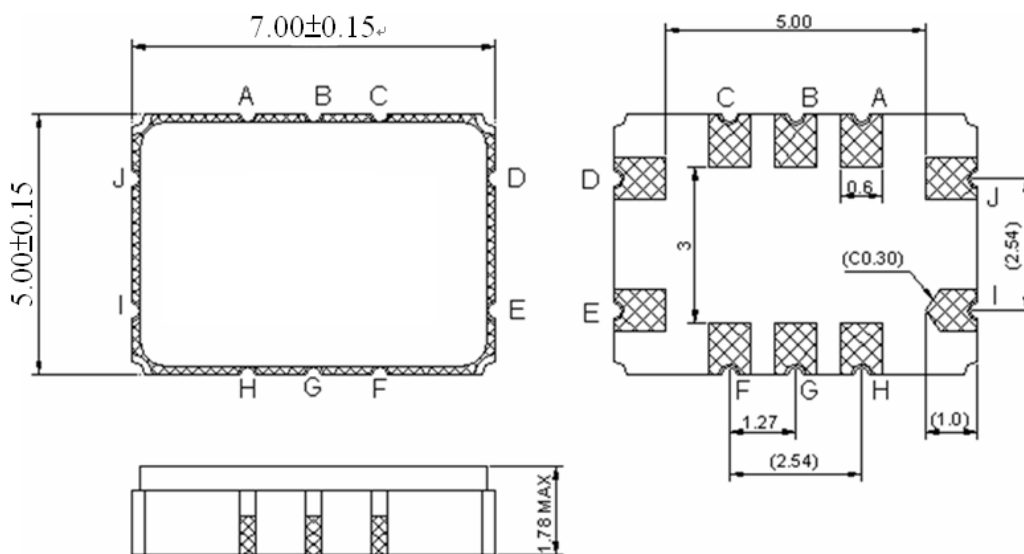
**Model: TB0784A**  
**Rev No: 2**

**D. MEASUREMENT CIRCUIT:**



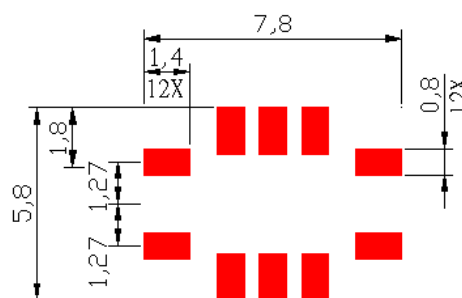
$L1 = 15nH, C1 = 18pF, L2 = 16nH, C2 = 12pF$

**E. OUTLINE DRAWING:**



J: RF input, D: RF output, K, E: Case Ground, A, B, C, F, G, H: Ground

**F. PCB FOOTPRINT:**

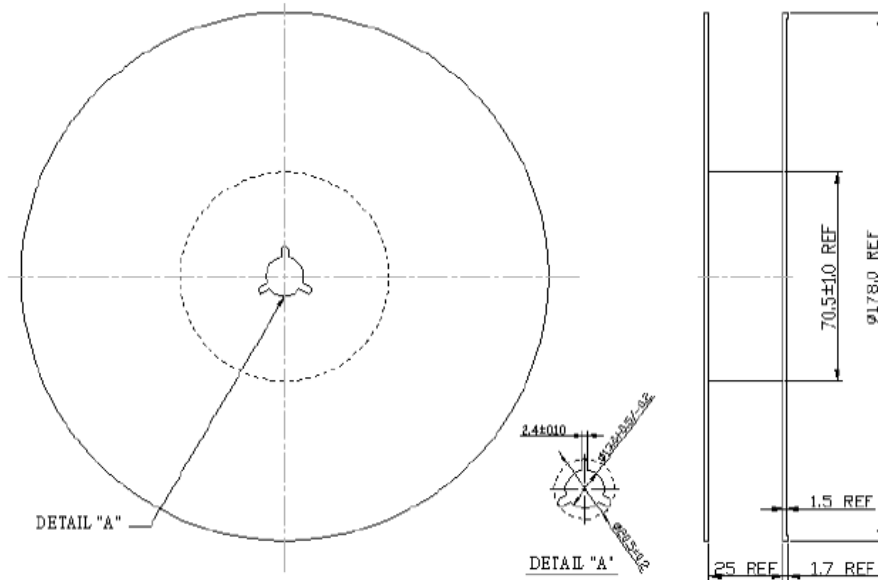


**SAW Filter 425.0MHz**  
**Part No: MP03701**

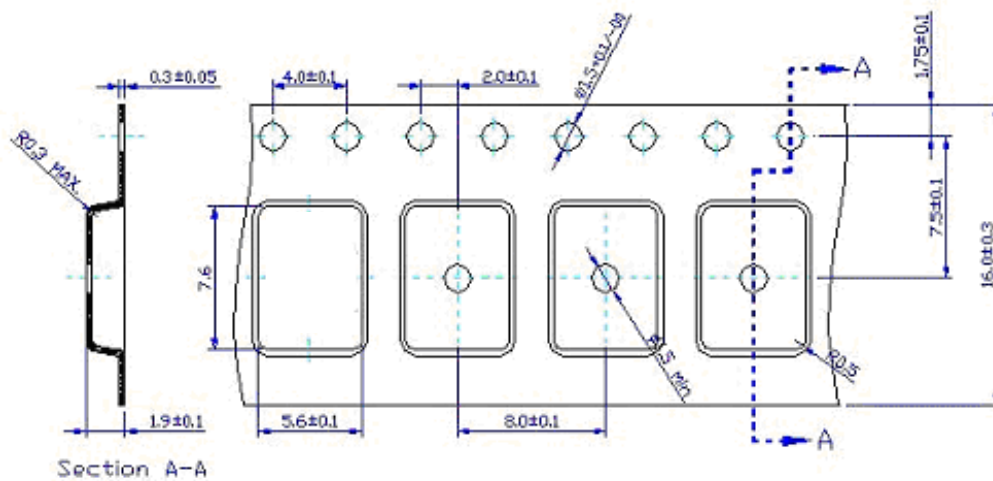
**Model: TB0784A**  
**Rev No: 2**

**G. PACKING:**

**1. REEL DIMENSION**



**2. TAPE DIMENSION**



**SAW Filter 425.0MHz**  
**Part No: MP03701**

**Model: TB0784A**  
**Rev No: 2**

**H. RECOMMENDED REFLOW PROFILE:**

