

SAW Filter 1210.0MHz
Part No: MP03834

Model: TA1076A
Rev No: 1

A. MAXIMUM RATING:

1. Input Power Level: 10dBm
2. DC Voltage: 3V
3. Operating Temperature: -40°C to +85°C
4. Storage Temperature: -50°C to +95°C

B. ELECTRICAL CHARACTERISTICS:

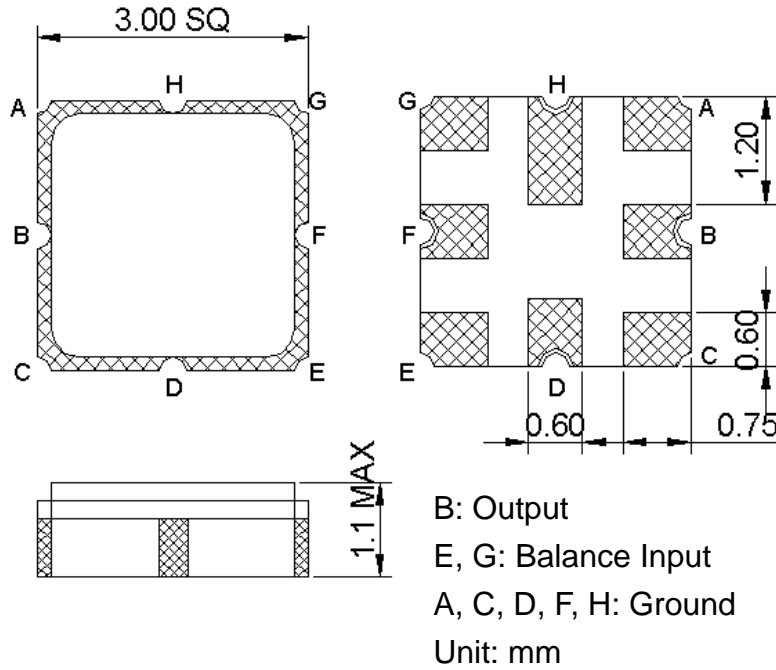
1. Terminating source impedance (balanced): $Z_S = 200\Omega // 39nH$
2. Terminating load impedance (single ended): $Z_L = 50\Omega$

Item	Unit	Min.	Typ.	Max.	Note
Center Frequency Fc	MHz	-	1210	-	-
Bandwidth at -2dB	MHz	60	93	-	-
Insertion Loss in 1180 ~ 1240MHz	dB	-	4.8	6	-
Amplitude ripple (1180 ~ 1240MHz)	dB	-	0.8	2	-
I/O VSWR (1180 ~ 1240MHz)		-	1.5	2.5	-
Attenuation (reference level from 0dB)					
50 ~ 1100MHz	dB	42	50	-	-
1325 ~ 2500MHz	dB	40	44	-	-
2500 ~ 3000MHz	dB	30	39	-	-
3000 ~ 6000MHz	dB	22	28	-	-

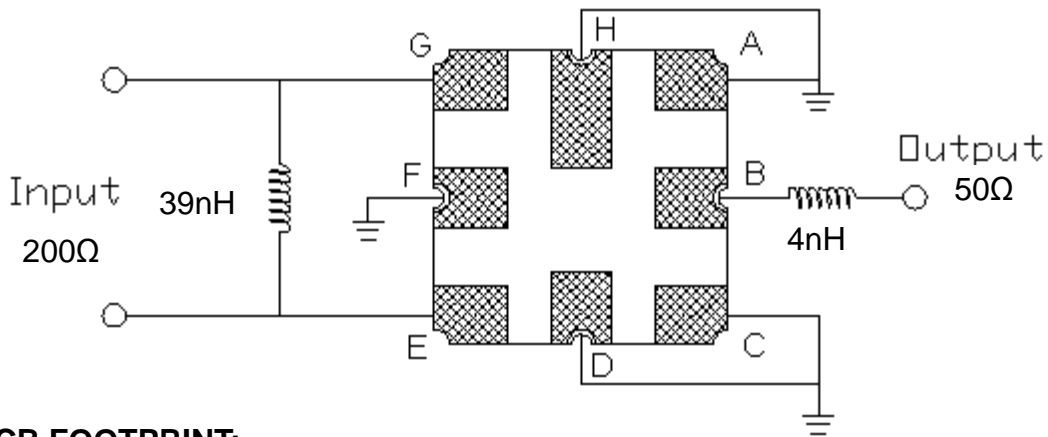
SAW Filter 1210.0MHz
Part No: MP03834

Model: TA1076A
Rev No: 1

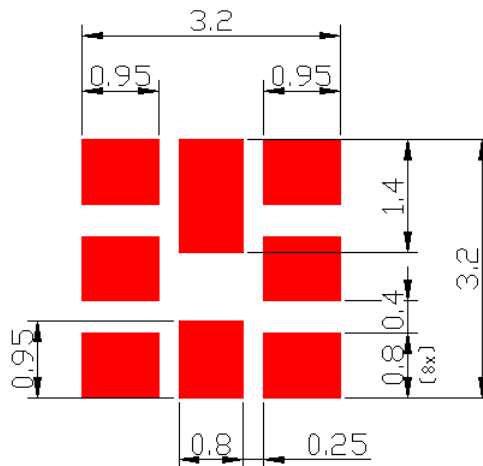
C. OUTLINE DRAWING:



D. MEASUREMENT CIRCUIT:



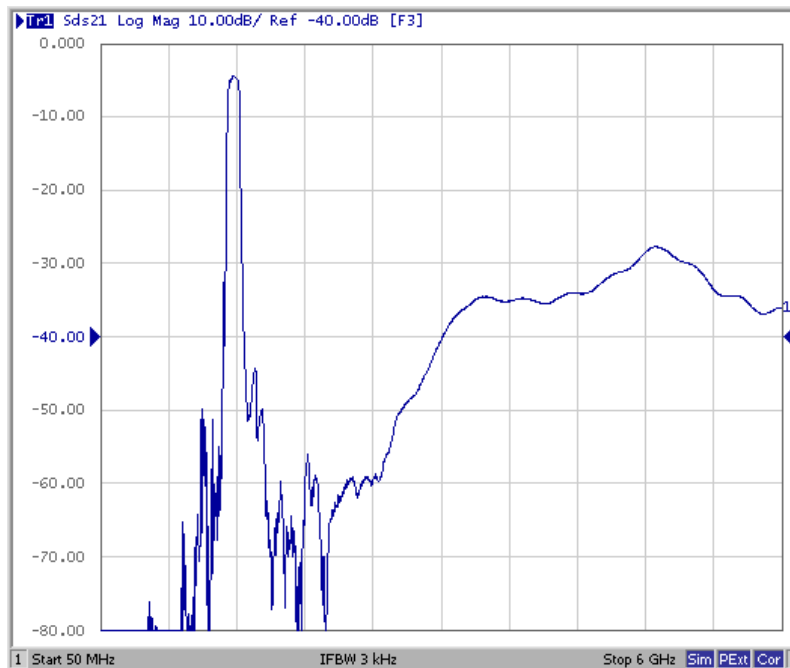
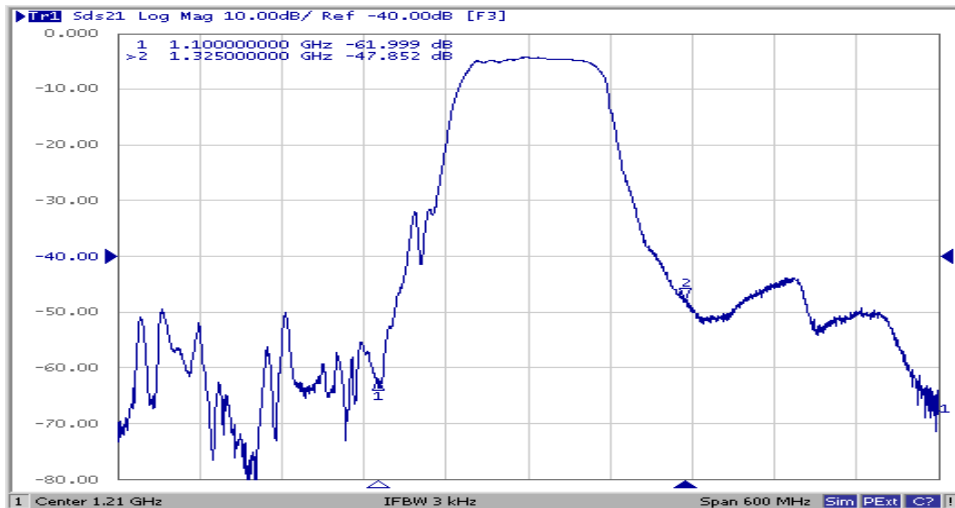
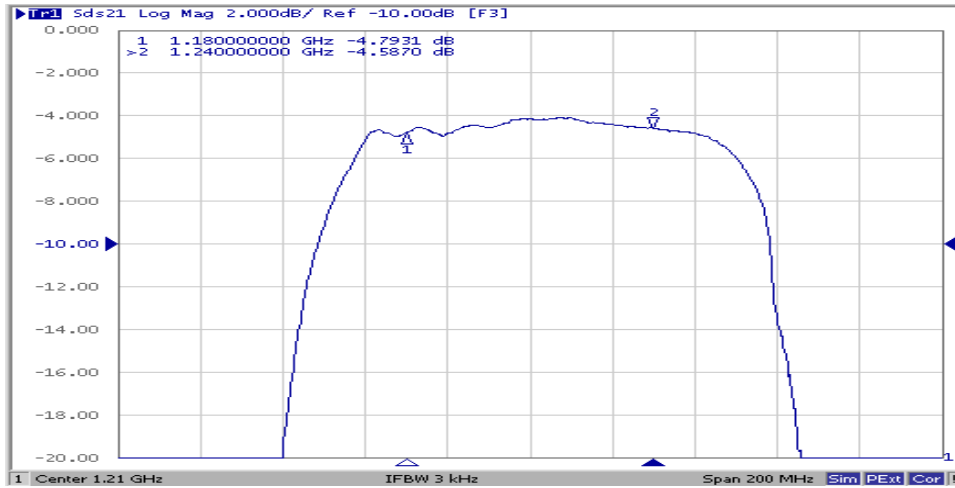
E. PCB FOOTPRINT:



SAW Filter 1210.0MHz
Part No: MP03834

Model: TA1076A
Rev No: 1

F. FREQUENCY CHARACTERISTICS:

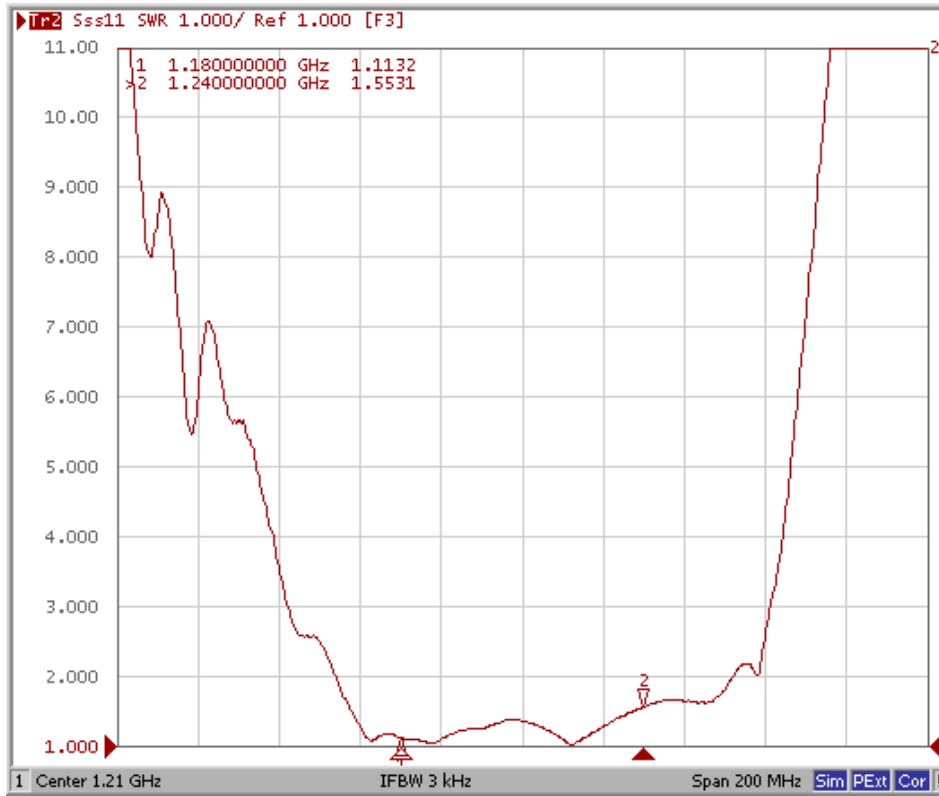


SAW Filter 1210.0MHz
Part No: MP03834

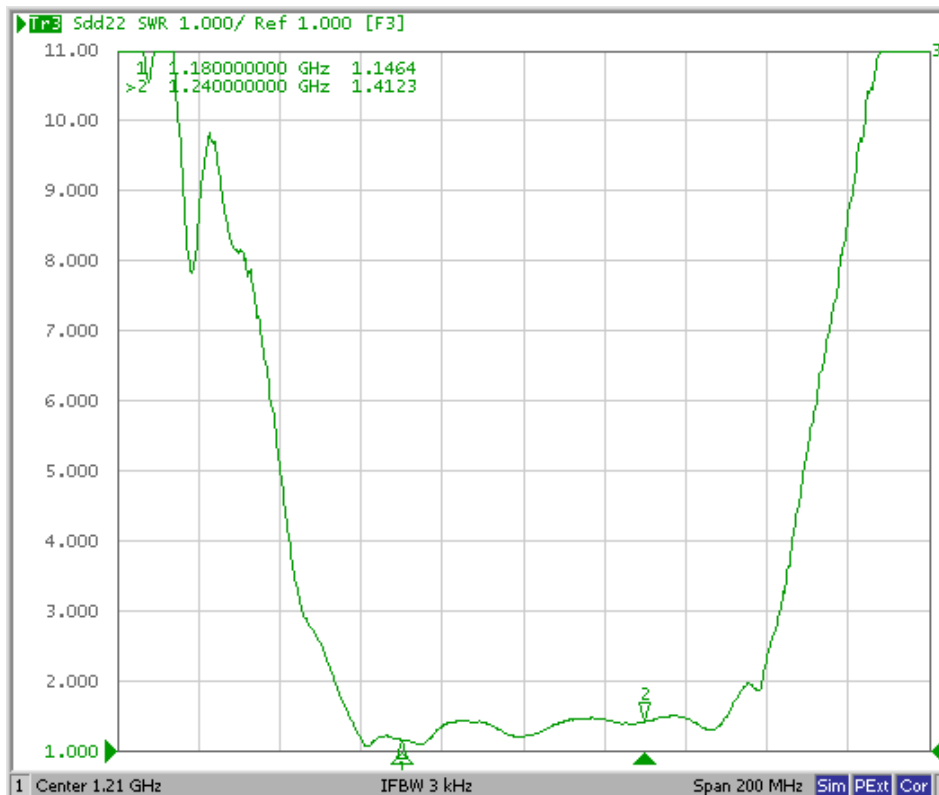
Model: TA1076A
Rev No: 1

Reflection Functions

S11



S22



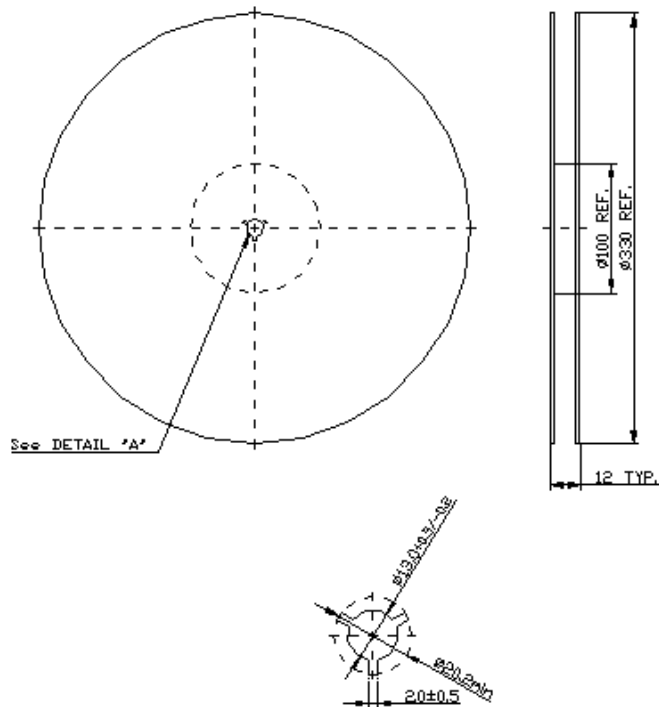
SAW Filter 1210.0MHz
Part No: MP03834

Model: TA1076A
Rev No: 1

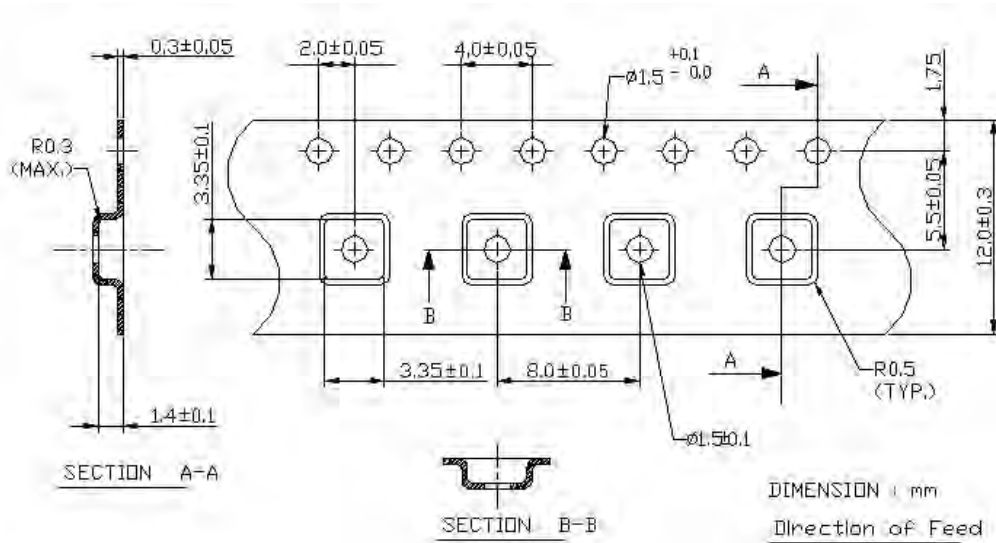
G. PACKING:

1. Reel Dimension

(Reel Count: 7" = 1000; 13" = 3000)



2. Tape Dimension



SAW Filter 1210.0MHz
Part No: MP03834

Model: TA1076A
Rev No: 1

H. RECOMMENDED REFLOW PROFILE:

