

**SAW Filter 2040.0MHz**  
**Part No: MP03835**

**Model: TA1079A**  
**Rev No:1**

**A. MAXIMUM RATING:**

1. Input Power Level: 10dBm
2. DC Voltage: 3V
3. Operating Temperature: -40°C to +85°C
4. Storage Temperature: -50°C to +95°C

**B. ELECTRICAL CHARACTERISTICS:**

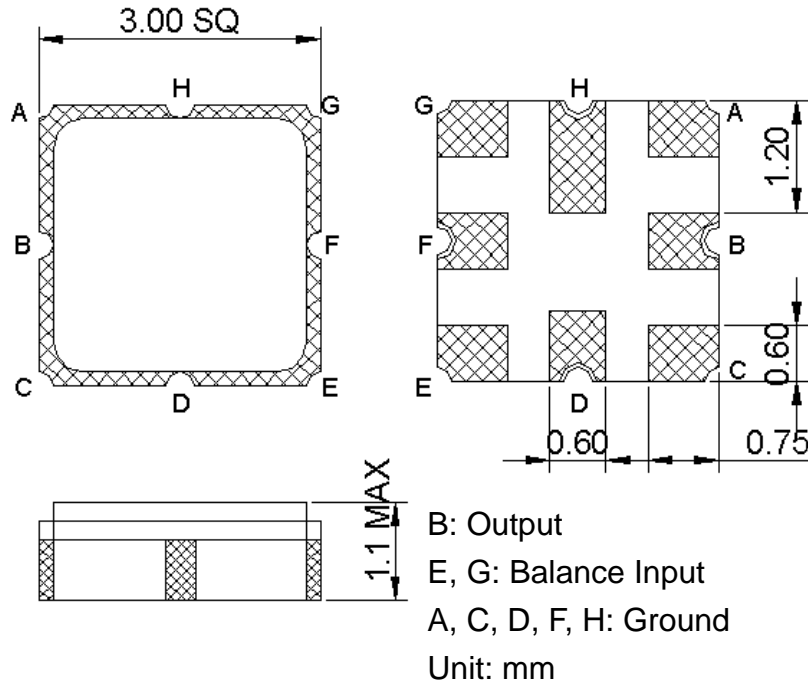
1. Terminating source impedance (balanced):  $Z_S = 200\Omega // 15nH$
2. Terminating load impedance (single ended):  $Z_L = 50\Omega$

Item	Unit	Min.	Typ.	Max.	Note
Center Frequency Fc	MHz	-	2040	-	-
Bandwidth at -2dB	MHz	60	94	-	-
Insertion Loss in 2010MHz ~ 2070MHz	dB	-	3.5	5	-
Amplitude ripple (2010MHz ~ 2070MHz)	dB	-	0.7	2	-
I/O VSWR (2010MHz ~ 2070MHz)		-	1.9	2.5	-
Attenuation (reference level from 0dB)					
50 ~ 1925MHz	dB	42	56	-	-
2190 ~ 3000MHz	dB	42	47	-	-
3000 ~ 4000MHz	dB	35	41	-	-
4000 ~ 6000MHz	dB	15	22	-	-

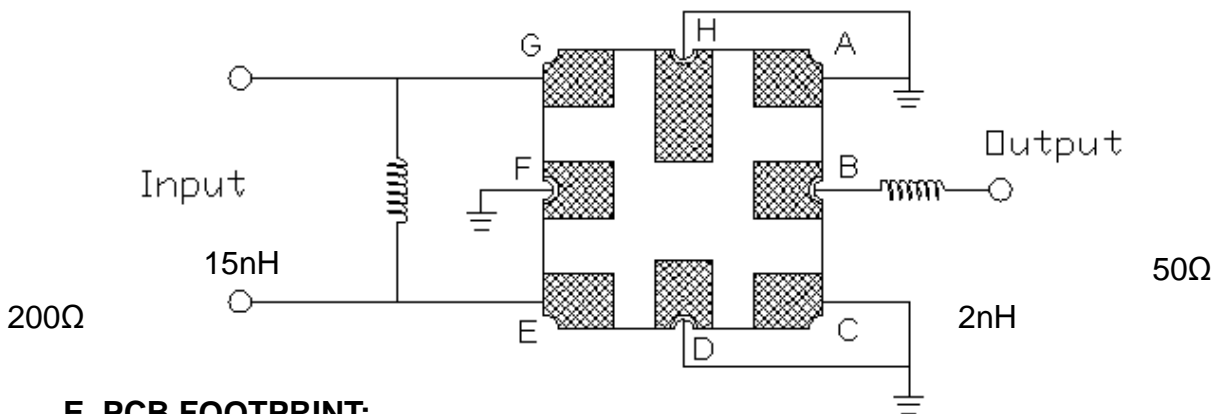
**SAW Filter 2040.0MHz**  
**Part No: MP03835**

**Model: TA1079A**  
**Rev No:1**

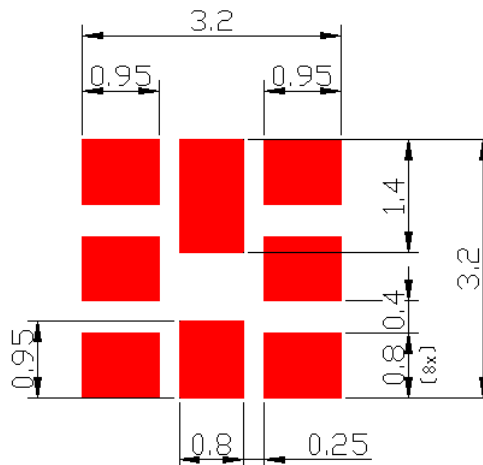
**C. OUTLINE DRAWING:**



**D. MEASUREMENT CIRCUIT:**



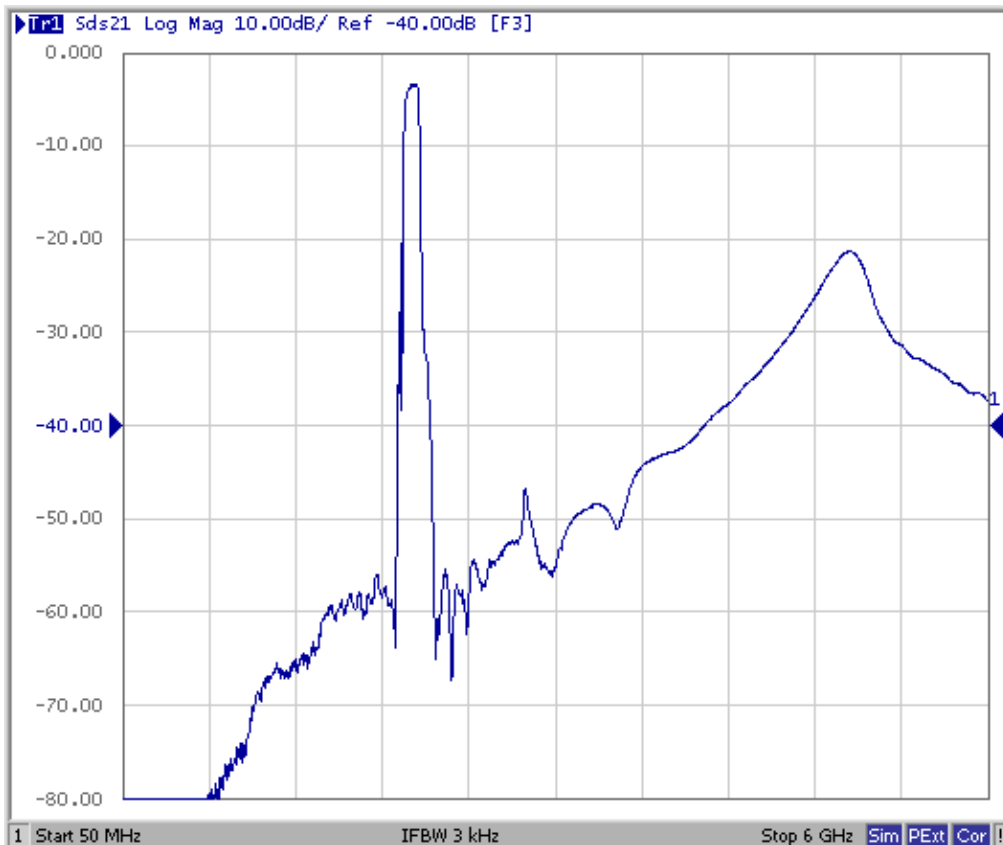
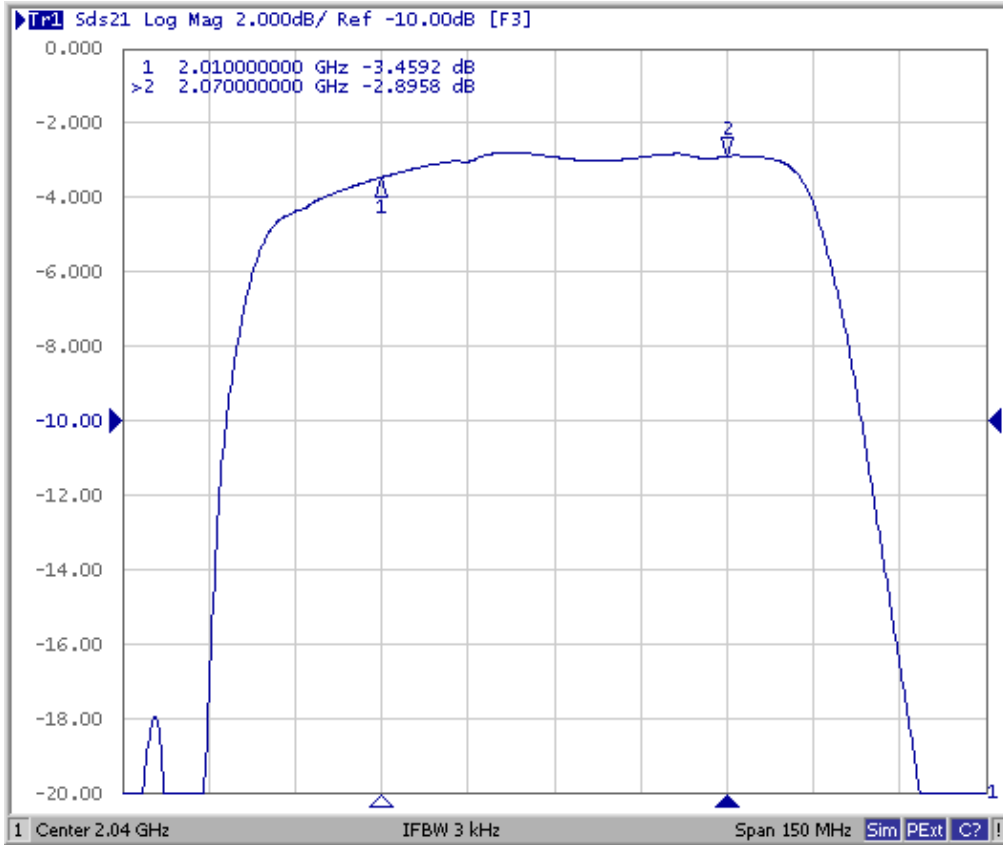
**E. PCB FOOTPRINT:**



**SAW Filter 2040.0MHz**  
**Part No: MP03835**

**Model: TA1079A**  
**Rev No:1**

**F. FREQUENCY CHARACTERISTICS:**

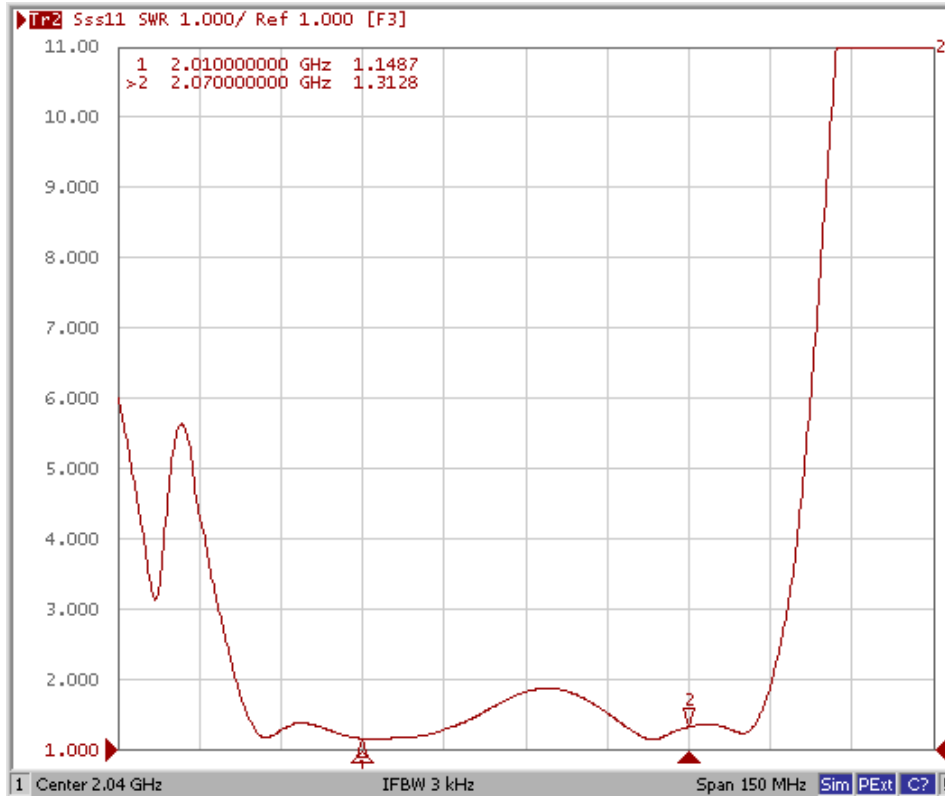


**SAW Filter 2040.0MHz**  
**Part No: MP03835**

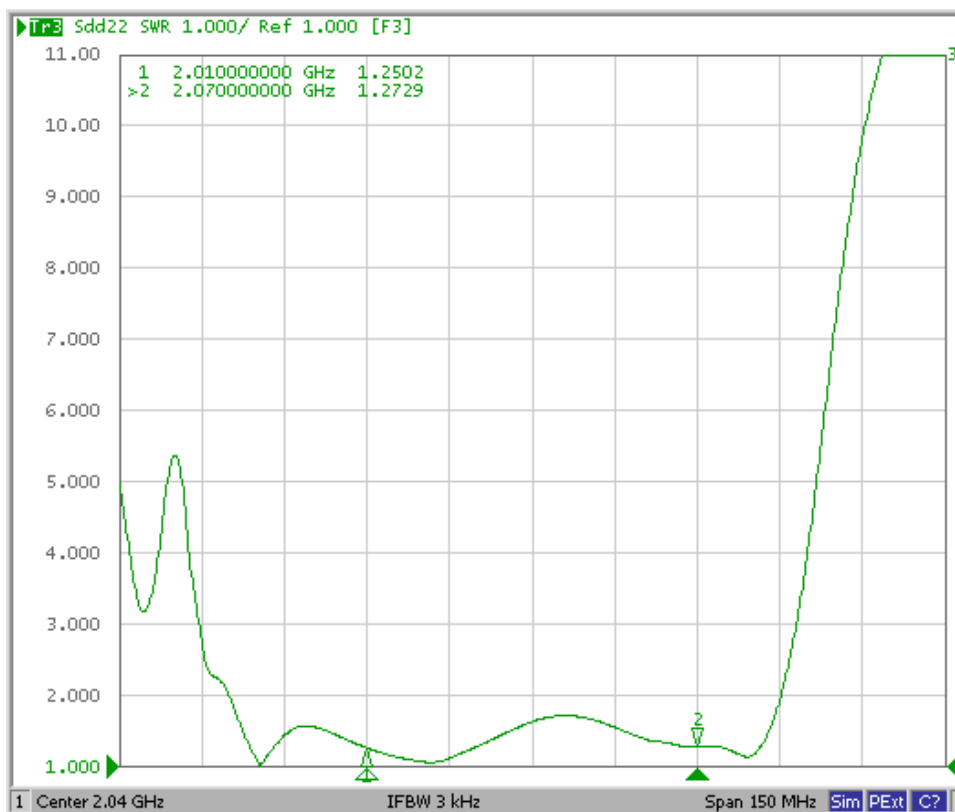
**Model: TA1079A**  
**Rev No:1**

Reflection Functions

S11



S22



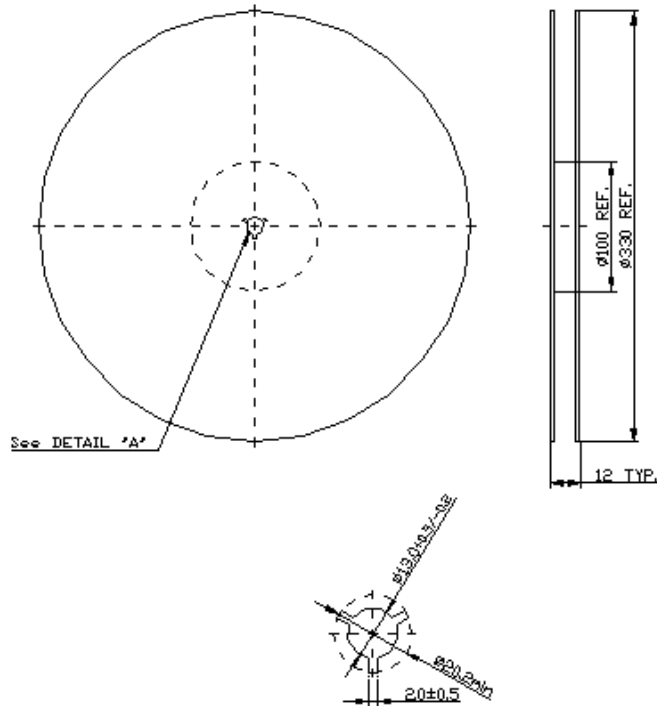
**SAW Filter 2040.0MHz**  
**Part No: MP03835**

**Model: TA1079A**  
**Rev No:1**

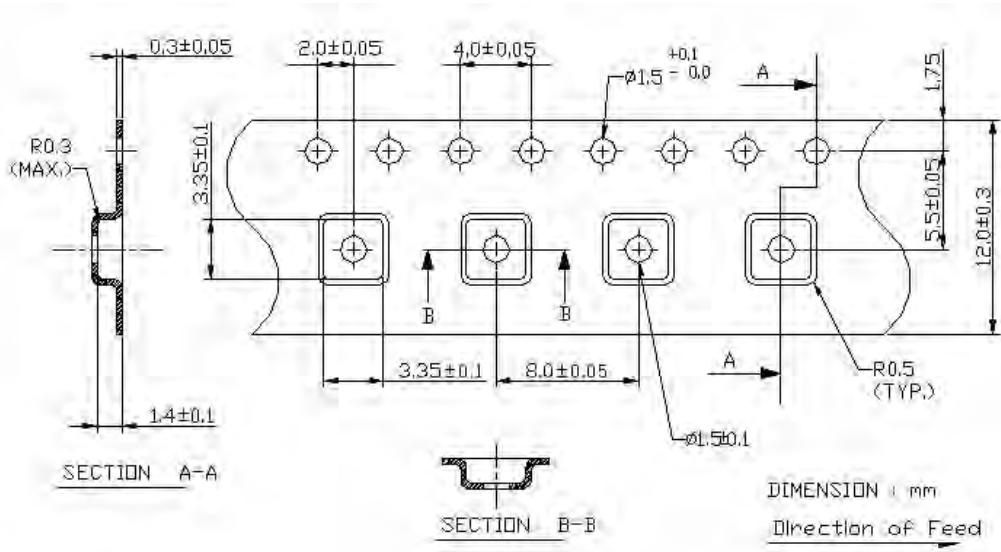
**G. PACKING:**

1. Reel Dimension

(Reel Count: 7" = 1000; 13" = 3000)



2. Tape Dimension



**SAW Filter 2040.0MHz**  
**Part No: MP03835**

**Model: TA1079A**  
**Rev No:1**

**H. RECOMMENDED REFLOW PROFILE:**

