

SAW Filter 480.0MHz
Part No: MP03867

Model: TB0729A
Rev No: 1

A. MAXIMUM RATING:

1. Operating Temperature: -30°C ~ 70°C
2. Storage Temperature: -40°C ~ +85°C

B. CHARACTERISTICS:

Ambient Temperature: 25°C

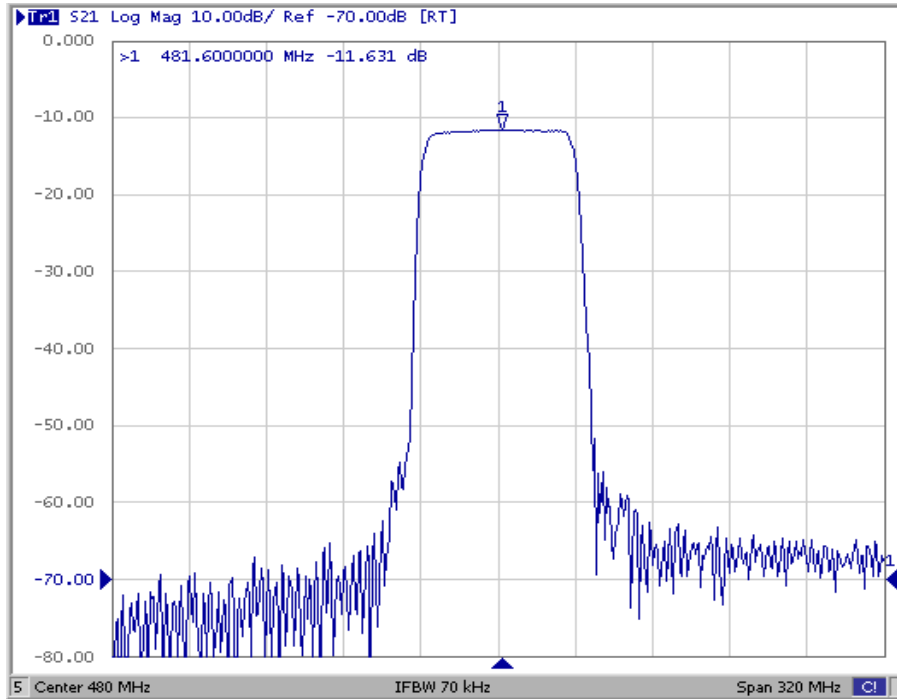
Item	Unit	Min.	Typ.	Max.
Center frequency Fc	MHz	479.5	480	480.5
Max Insertion Loss	dB	-	11.5	15.0
1dB Bandwidth	MHz	54	58.0	-
3dB Bandwidth	MHz	56	62.0	-
Pass band Ripple Fc ± 27MHz	dB	-	0.6	1.2
Group delay 453 ~ 507MHz	ns		10	40
Relative Attenuation: (Reference level from Max IL)				
320MHz to 440MHz	dB	35	44	-
520MHz to 640MHz	dB	35	43	-
Matching: 1. The input of the filter will be matched to 50Ω 2. The output of the filter will be matched to 50Ω				

SAW Filter 480.0MHz
Part No: MP03867

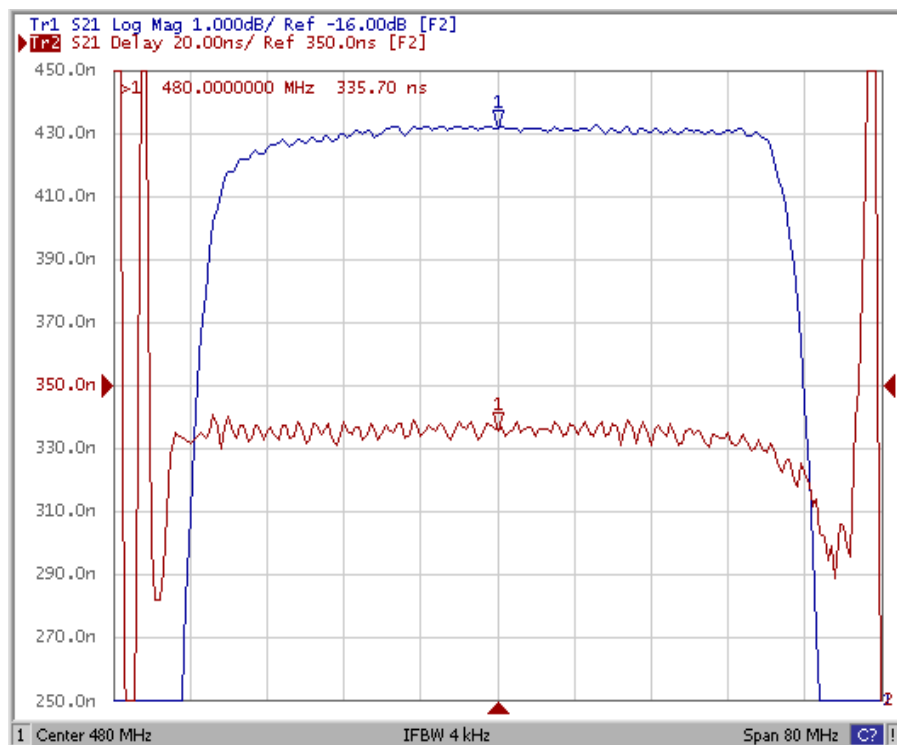
Model: TB0729A
Rev No: 1

C. FREQUENCY CHARACTERISTICS:

1. S21 Response: (span 320MHz)



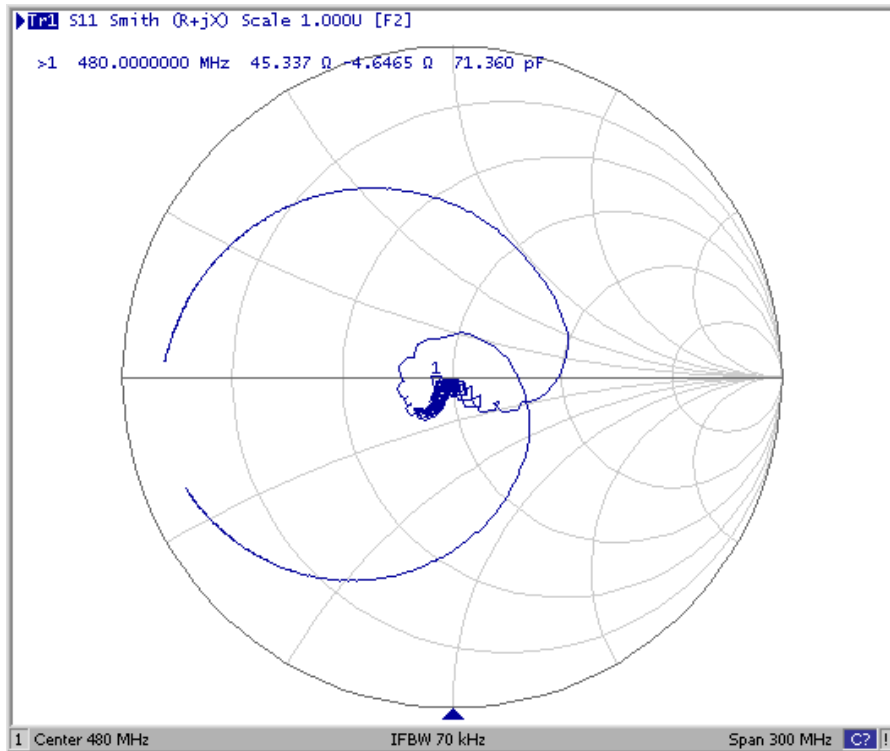
2. Passband of Response: (span: 80MHz)



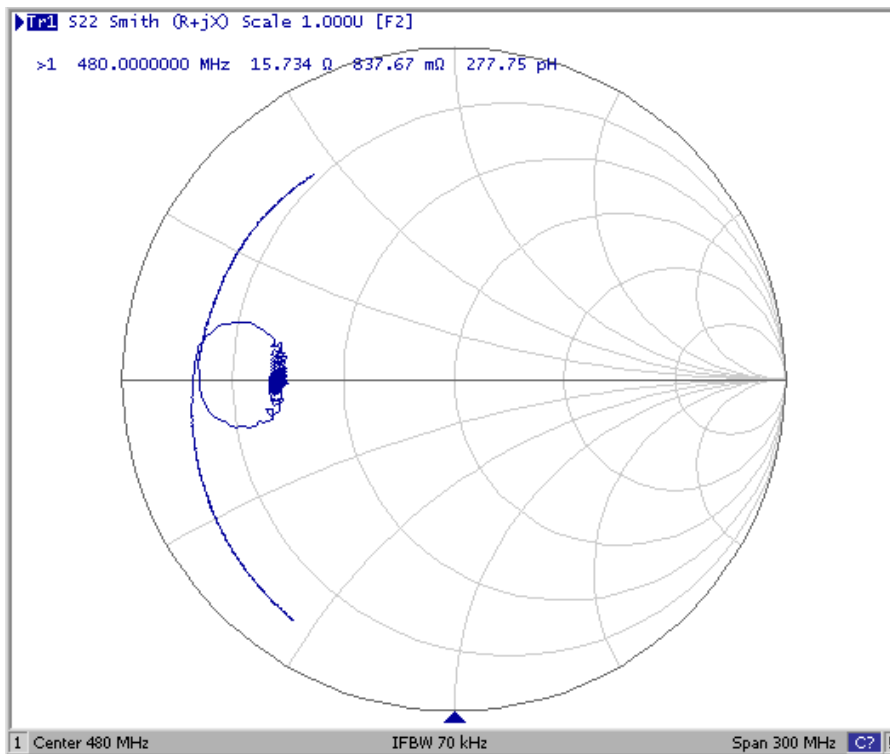
SAW Filter 480.0MHz
Part No: MP03867

Model: TB0729A
Rev No: 1

3. S11 Smith Chart: (span 300MHz)



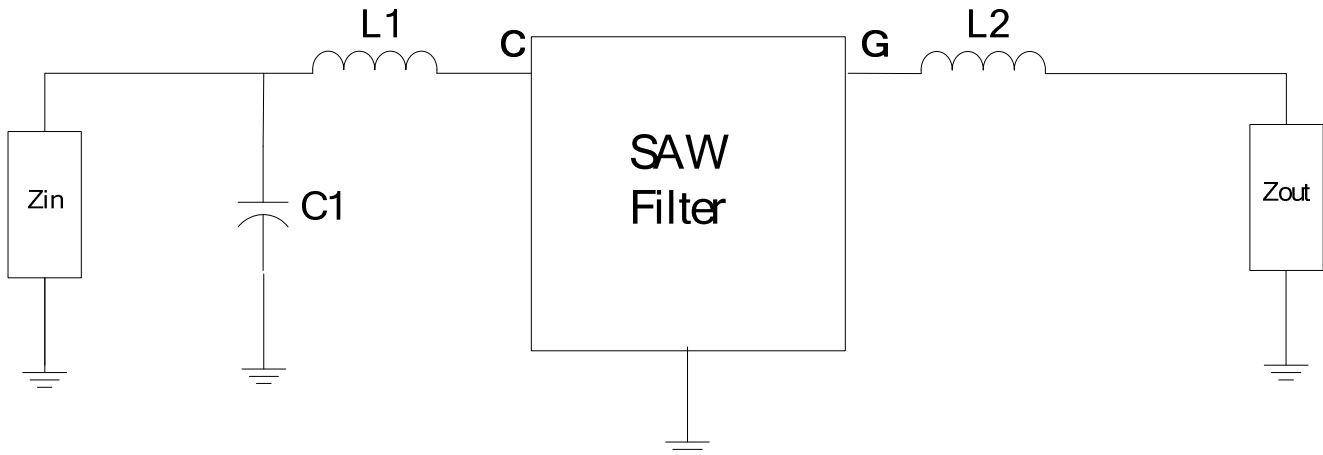
4. S22 Smith Chart: (span 300MHz)



SAW Filter 480.0MHz
Part No: MP03867

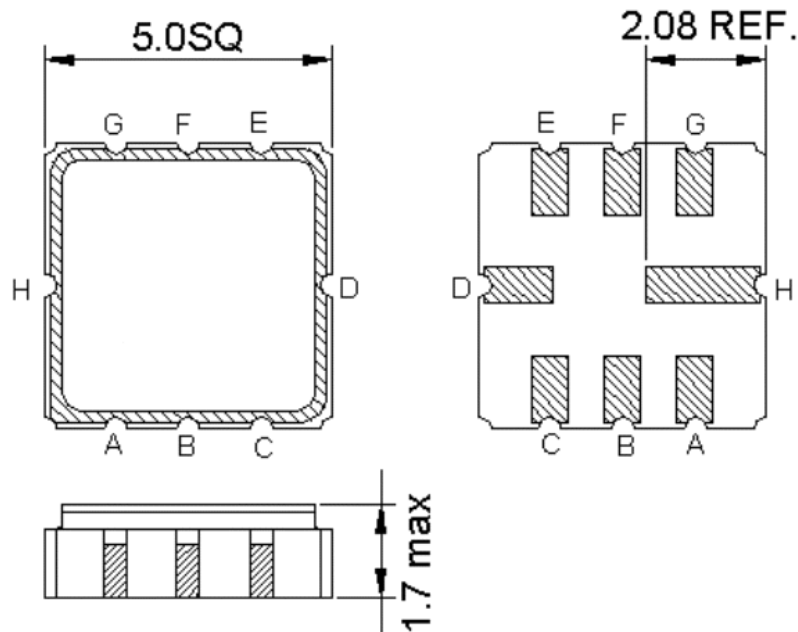
Model: TB0729A
Rev No: 1

D. TEST CIRCUIT:



Z_{IN} and Z_{OUT} are 50Ω , $L1 = 15nH$, $C1 = 10pF$, $L2 = 2.7nH$

E. OUTLINE DRAWING:



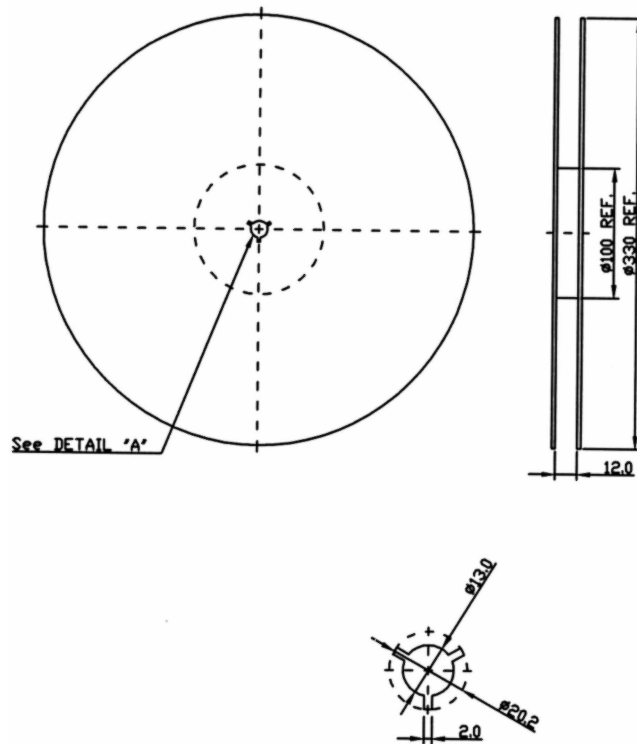
C: RF input
G: RF output
H, D: Case Ground
A, B, E, F: Ground
Unit: mm

SAW Filter 480.0MHz
Part No: MP03867

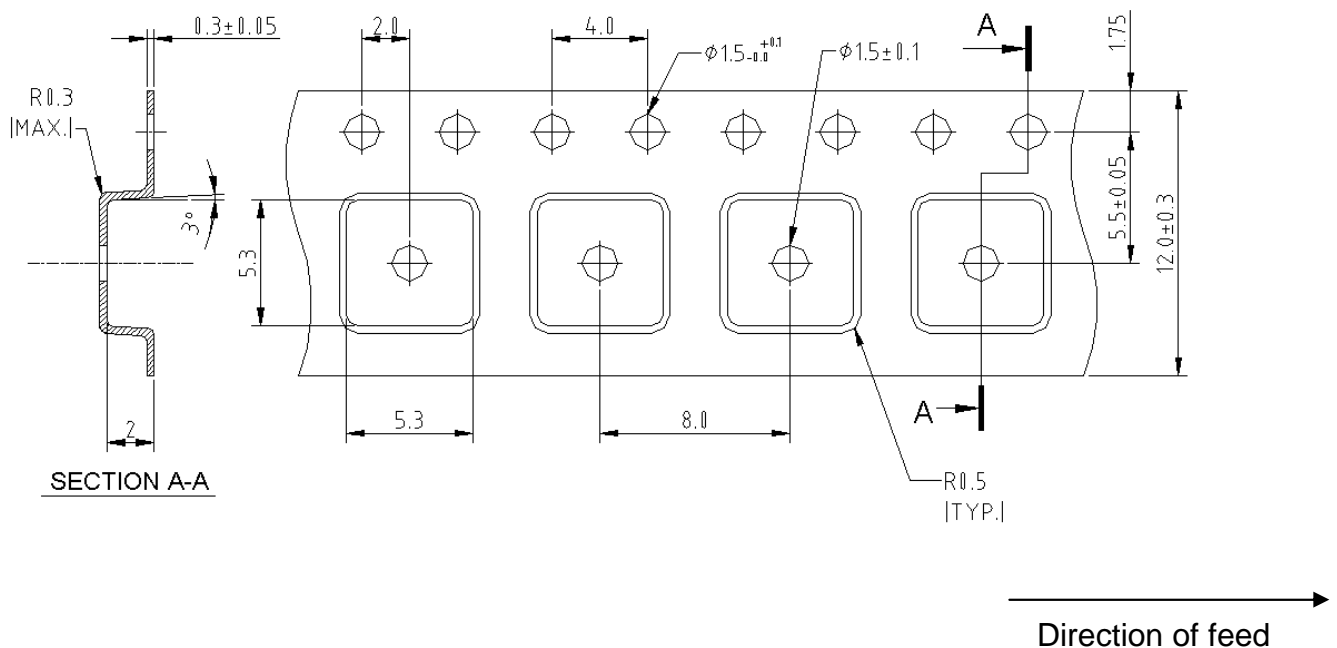
Model: TB0729A
Rev No: 1

F. PACKING:

1. REEL DIMENSION



2. TAPE DIMENSION



SAW Filter 480.0MHz
Part No: MP03867

Model: TB0729A
Rev No: 1

G. RECOMMENDED REFLOW PROFILE:

