

SAW Filter 512.20MHz
Part No: MP03885

Model: TB0577A
Rev No: 1

A. MAXIMUM RATING:

1. Operating Temperature: -40°C to +85°C
2. Storage Temperature: -40°C to +85°C
3. Maximum Input Power: 10dBm

B. ELECTRICAL CHARACTERISTICS:

Ambient Temperature: 25°C

Item	Unit	Min.	Typ.	Max.
Center frequency Fc	MHz	-	512.2	-
Insertion loss at Fc	dB	-	11.8	13.5
Bandwidth at -1.0dB	MHz	27.0	30.0	-
Amplitude Ripple (Fc ± 11.5MHz)	dB	-	0.6	1.0
Group Delay Ripple (Fc ± 11.5MHz)	nS	-	30	-
Attenuation (Reference level from minimum Insertion loss)				
300 MHz ~ 487.5MHz	dB	40	48	-
540 MHz ~ 650MHz	dB	36	42	-
Temp Coefficient	ppm/°C	-	-93	-

SAW Filter 512.20MHz
Part No: MP03885

Model: TB0577A
Rev No: 1

C. FREQUENCY CHARACTERISTICS:

1. S21 Response

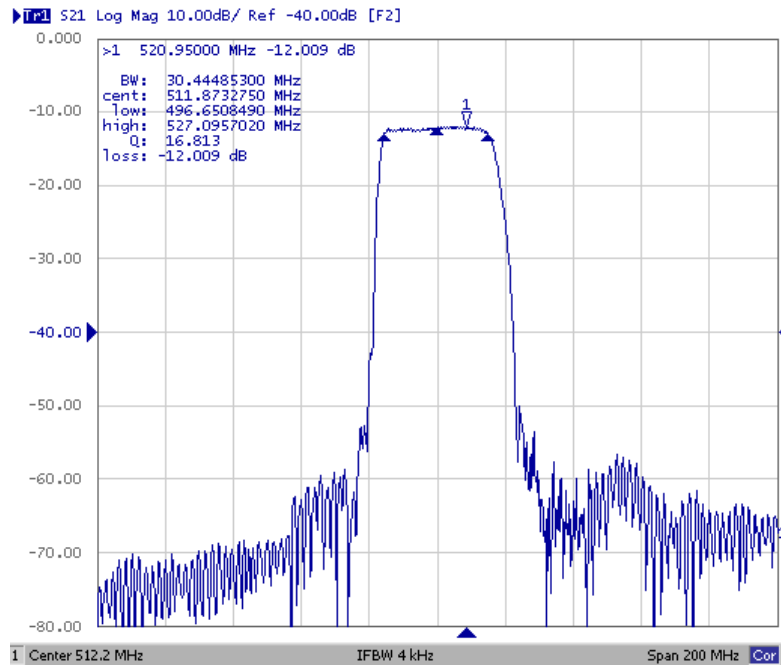


Fig. 1. Horizontal: 20MHz/Div, Vertical: 10dB/Div

2. Passband Ripple

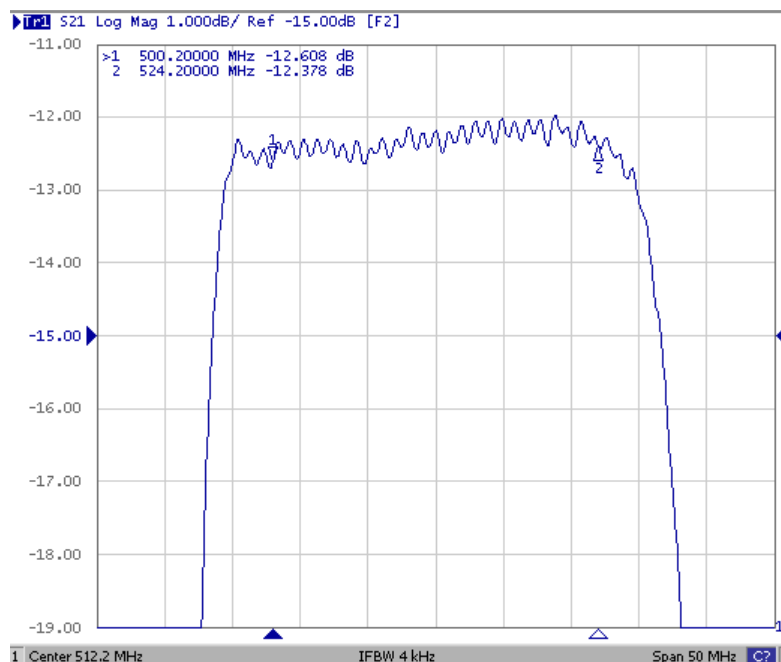


Fig. 2. Horizontal: 5MHz/Div, Vertical: 1dB/Div

SAW Filter 512.20MHz
Part No: MP03885

Model: TB0577A
Rev No: 1

3. Group Delay Ripple

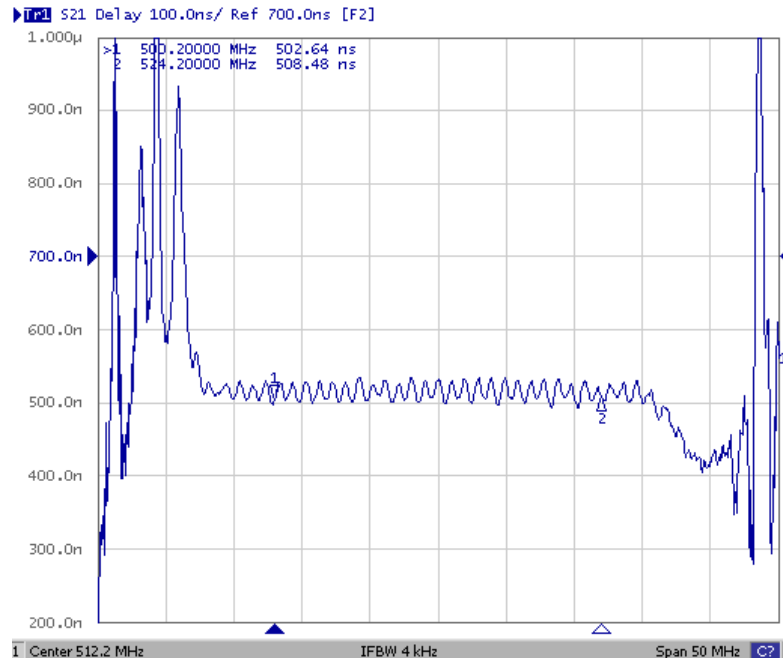
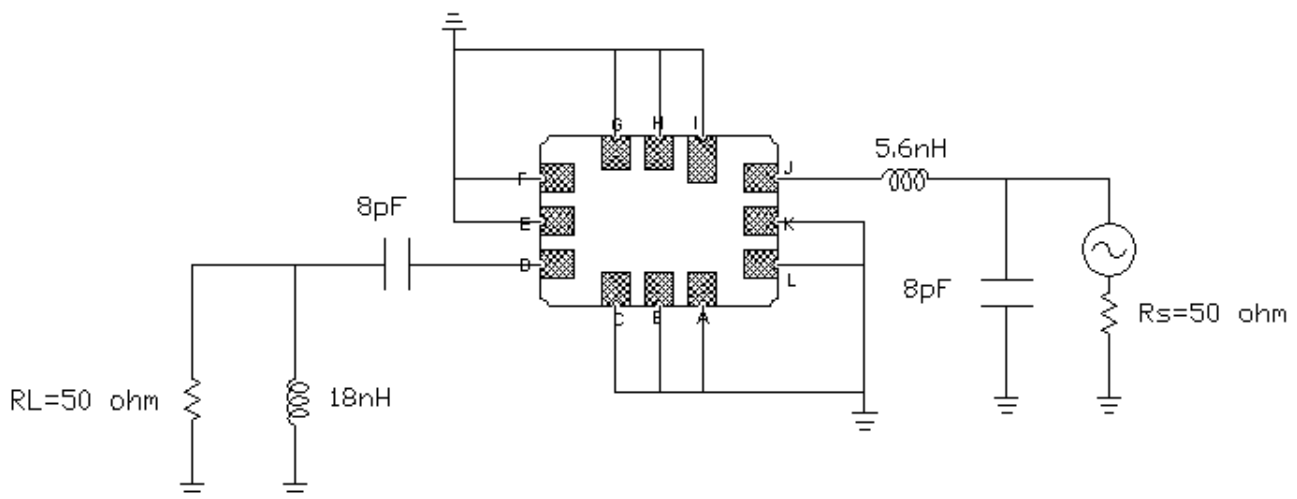


Fig. 3. Horizontal: 5MHz/Div, Vertical: 100nS/Div

D. MEASUREMENT CIRCUIT:

1. Single ended input 50 ohm to Single ended Output 50 ohm

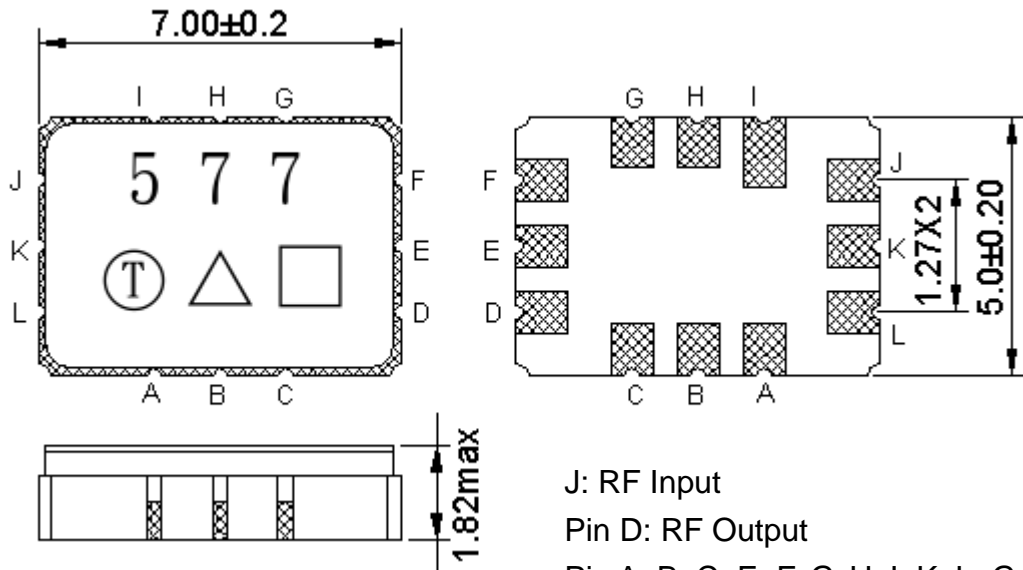


Note: The matching structure will change according to different test fixture.

SAW Filter 512.20MHz
Part No: MP03885

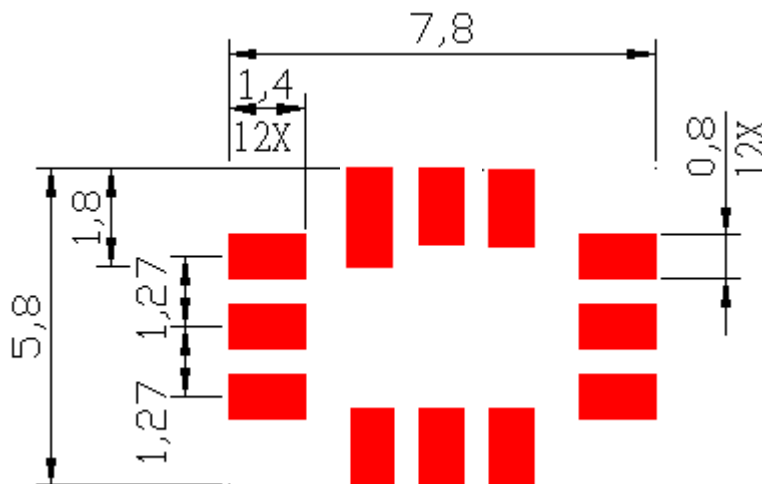
Model: TB0577A
Rev No: 1

E. OUTLINE DRAWING:



J: RF Input
 Pin D: RF Output
 Pin A, B, C, E, F, G, H, I, K, L: Ground
 Unit: mm

F. PCB FOOTPRINT:

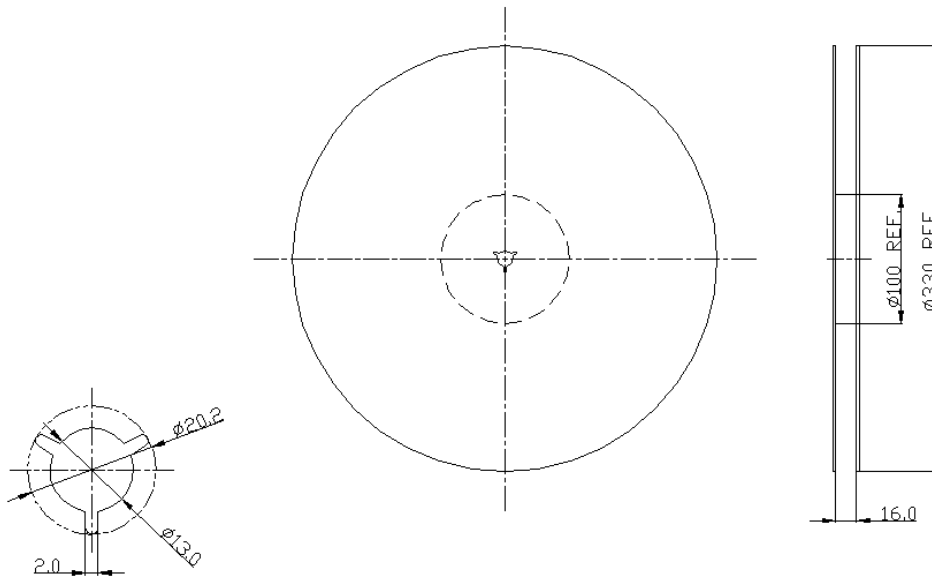


SAW Filter 512.20MHz
Part No: MP03885

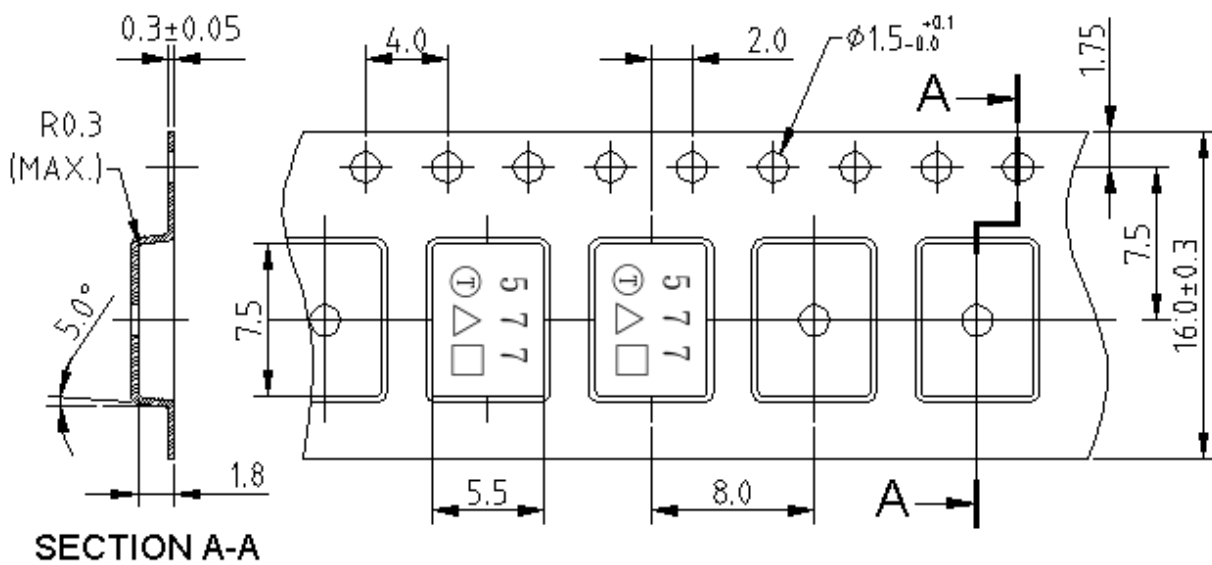
Model: TB0577A
Rev No: 1

G. PACKING:

1. REEL DIMENSION



2. TAPE DIMENSION



SAW Filter 512.20MHz
Part No: MP03885

Model: TB0577A
Rev No: 1

H. RECOMMENDED REFLOW PROFILE:

