

**SAW Filter 315.0MHz**  
**Part No: MP03963**

**Model: TA0705A**  
**Rev No: 1**

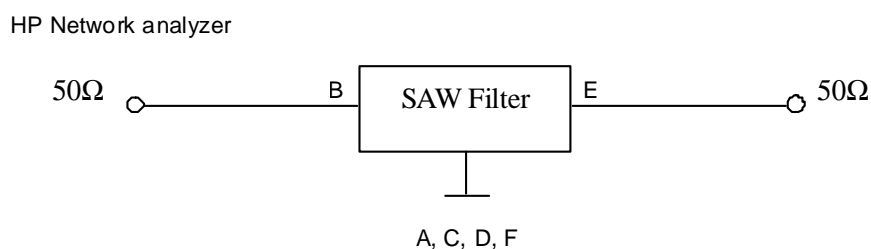
**A. MAXIMUM RATING:**

1. Input Power Level: 10dBm
2. DC voltage: 3V
3. Operating Temperature: -40°C to 85°C
4. Storage Temperature: -40°C to +85°C

**B. CHARACTERISTICS:**

Item	Unit	Min.	Typ.	Max.
Center frequency Fc	MH	-	315	-
Maximum Insertion loss 314.70 ~ 315.30MHz IL	dB	-	1.53	2.5
Amplitude ripple 314.70 ~ 315.30MHz	dB	-	0.4	1.5
VSWR 314.70 ~ 315.30MHz			1.45	2.0
Attenuation (Reference level from 0dB)				
270.0 ~ 286.0MHz	dB	55	61	-
293.0 ~ 293.9MHz	dB	53	59	-
304.0 ~ 304.6MHz	dB	48	53	-
325.4 ~ 326.0MHz	dB	24	30	-
336.1 ~ 337.0MHz	dB	36	46	-
357.5 ~ 358.7MHz	dB	50	56	-
Source impedance Z <sub>S</sub>	Ω	-	50	-
Load impedance Z <sub>L</sub>	Ω	-	50	-
Temperature coefficient	ppm/k	-	-36	-

**C. MEASUREMENT CIRCUIT:**

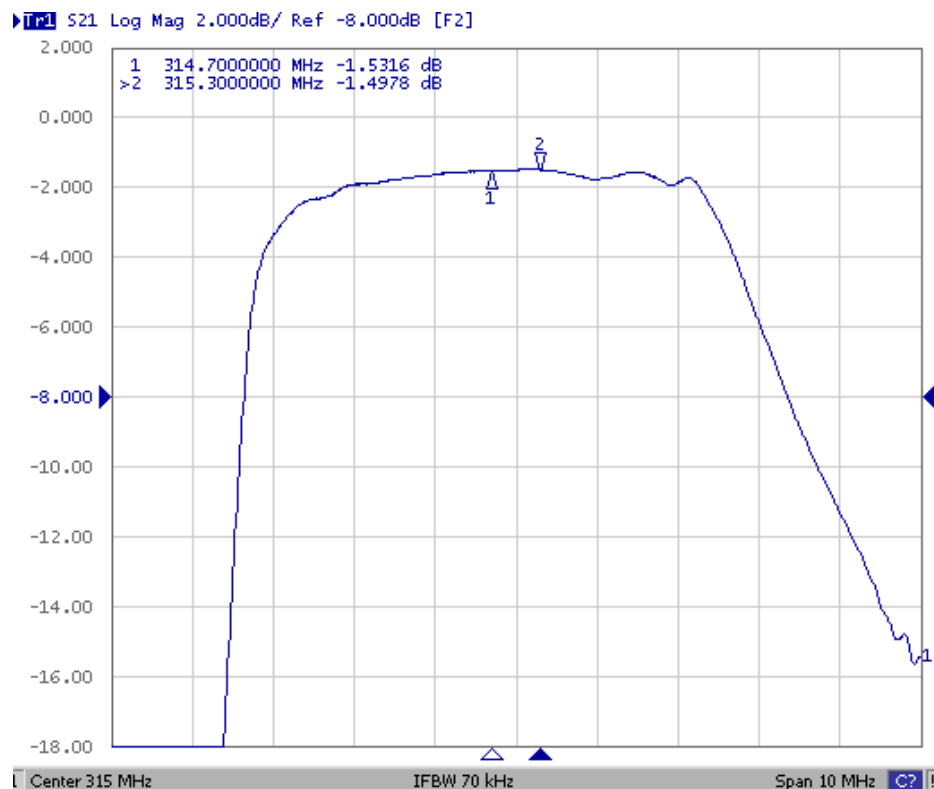
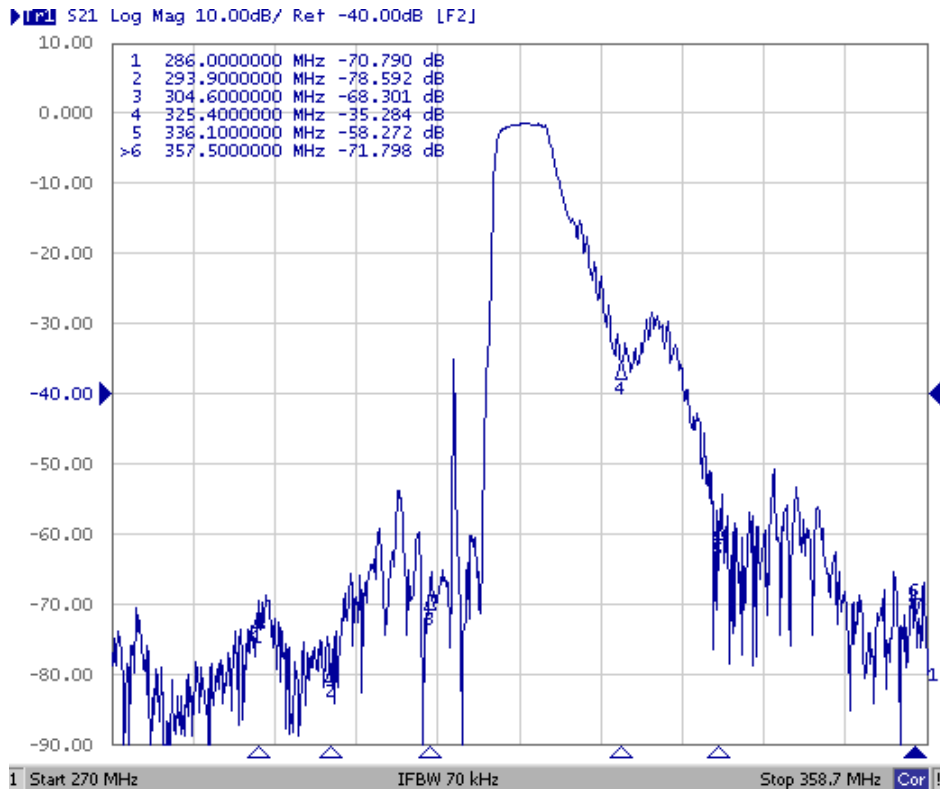


**SAW Filter 315.0MHz**  
**Part No: MP03963**

**Model: TA0705A**  
**Rev No: 1**

**D. FREQUENCY CHARACTERISTICS:**

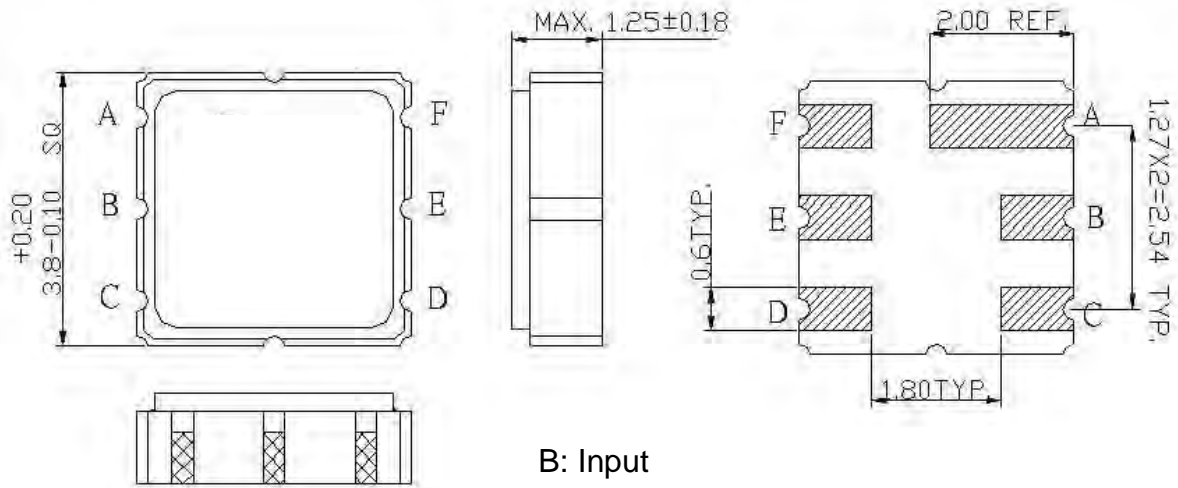
Transfer Function



**SAW Filter 315.0MHz**  
**Part No: MP03963**

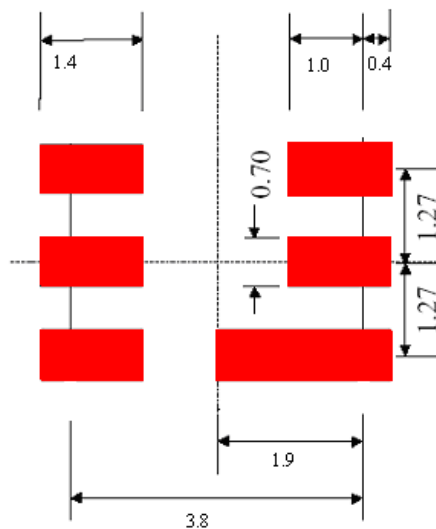
**Model: TA0705A**  
**Rev No: 1**

**E. OUTLINE DRAWING:**



B: Input  
 E: Output  
 A, C, D, F: Ground  
 Unit: mm

**F. PCB FOOTPRINT:**

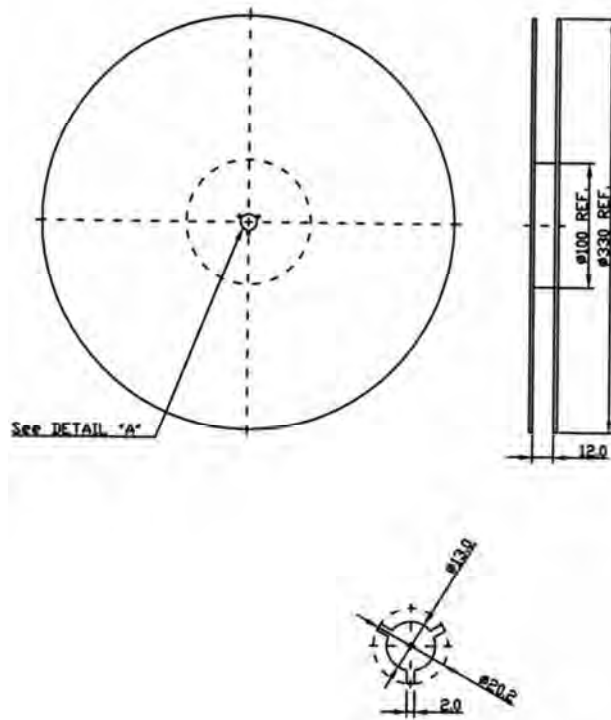


**SAW Filter 315.0MHz**  
**Part No: MP03963**

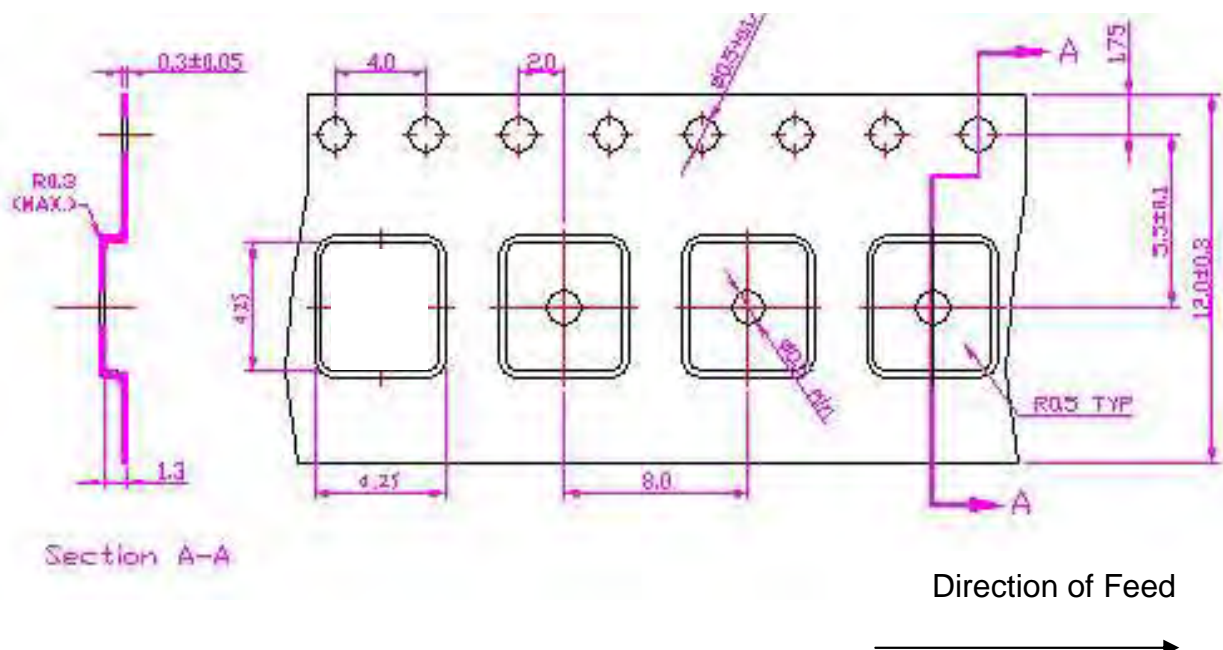
**Model: TA0705A**  
**Rev No: 1**

**G. PACKING:**

1. Reel Dimension



2. Tape Dimension



**SAW Filter 315.0MHz**  
**Part No: MP03963**

**Model: TA0705A**  
**Rev No: 1**

**H. REFLOW PROFILE:**

