

SAW Filter 433.420MHz
Part No: MP04027

Model: TA0723A
Rev No: 1

A. MAXIMUM RATING:

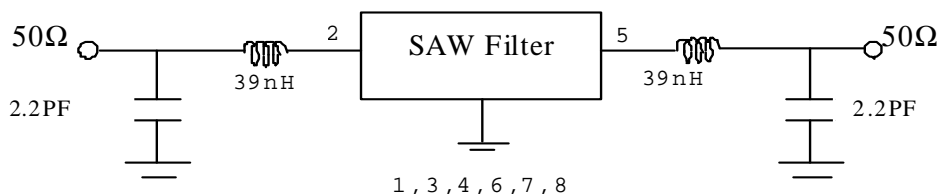
1. Input Power Level: 0dBm
2. DC voltage: 12V
3. Operating Temperature: -45°C to +85°C
4. Storage Temperature: -45°C to +85°C

B. ELECTRICAL CHARACTERISTICS:

Item	Min.	Typ.	Max.	Note
Center frequency Fc (MHz)	433.3	433.42	433.62	1
Minimum IL (433.3 ~ 433.62MHz) (dB) IL min	-	3.2	5.0	
Pass band (relative to IL min)				1
433.26 ~ 433.58MHz (dB)	-	-	2.0	
433.24 ~ 433.60MHz (dB)	-	-	3.0	
433.18 ~ 433.66MHz (dB)	-	-	6.0	
Pass bandwidth (relative to IL min) BW3 (kHz)	500	550	750	
Attenuation: (relative to IL min) (dB)				1
413.5 ~ 427.5MHz (dB)	38	42	-	
427.5 ~ 432.34MHz (dB)	15	24	-	
434.42 ~ 441.5MHz (dB)	10	15	-	
441.5 ~ 549.5MHz (dB)	33	38	-	
Impedance at Fc; Input $Z_{IN} = R_{IN} // C_{IN}$ Output $Z_{OUT} = R_{OUT} // C_{OUT}$	232Ω // 3.2pF			

C. MEASUREMENT CIRCUIT:

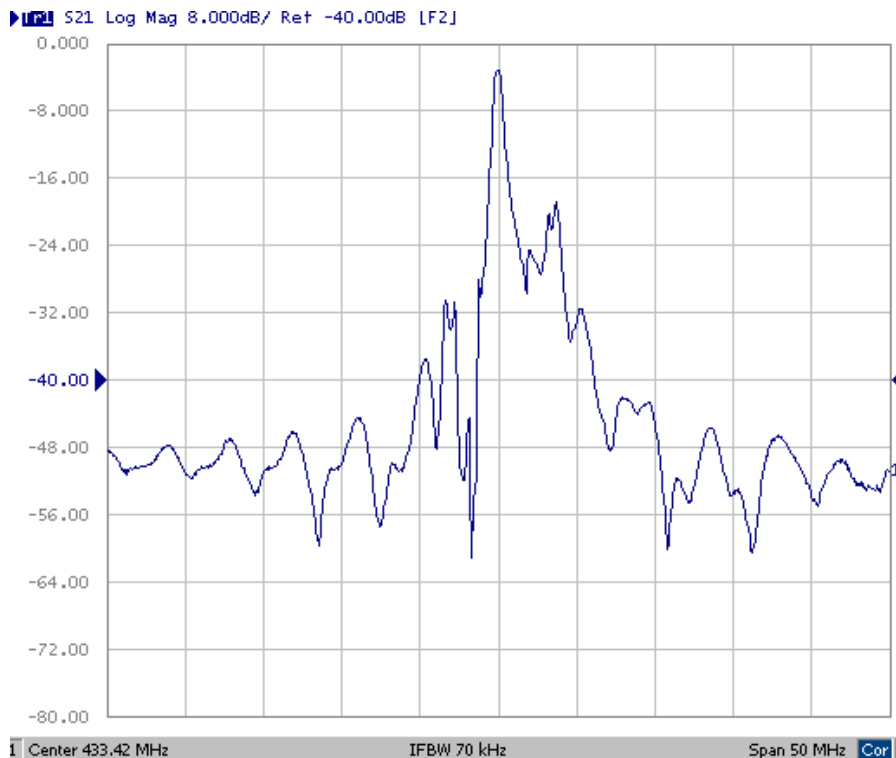
HP Network analyzer



SAW Filter 433.420MHz
Part No: MP04027

Model: TA0723A
Rev No: 1

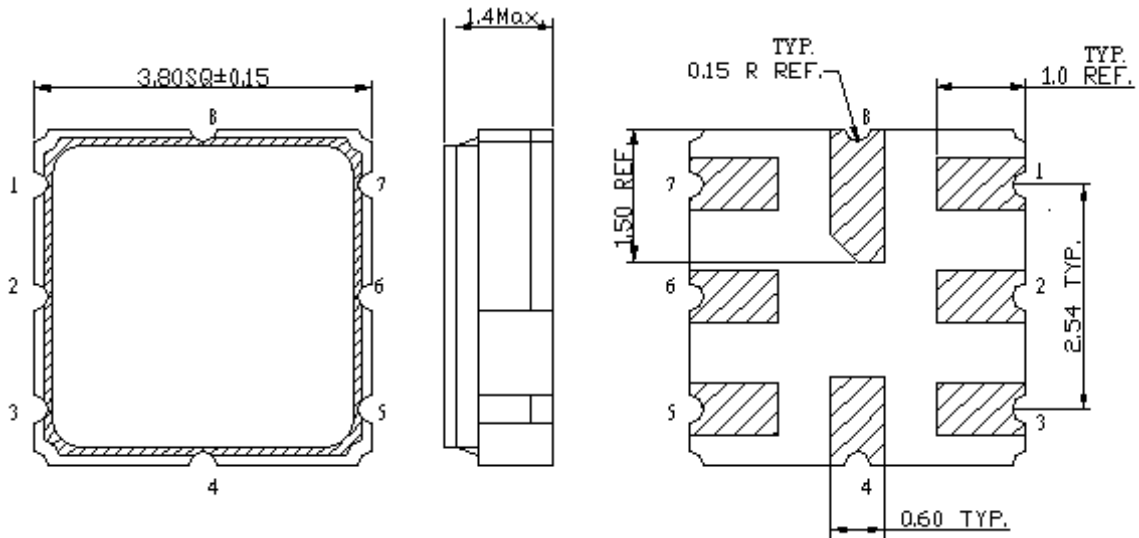
D. FREQUENCY CHARACTERISTICS:



SAW Filter 433.420MHz
Part No: MP04027

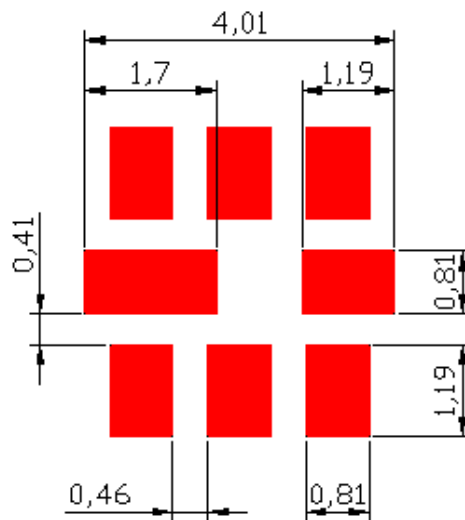
Model: TA0723A
Rev No: 1

E. OUTLINE DRAWING:



- 1: Input Ground
 - 2: Input
 - 5: Output
 - 6: Output Ground
 - 3, 4, 7, 8: Ground
- Unit: mm

F. PCB FOOTPRINT:



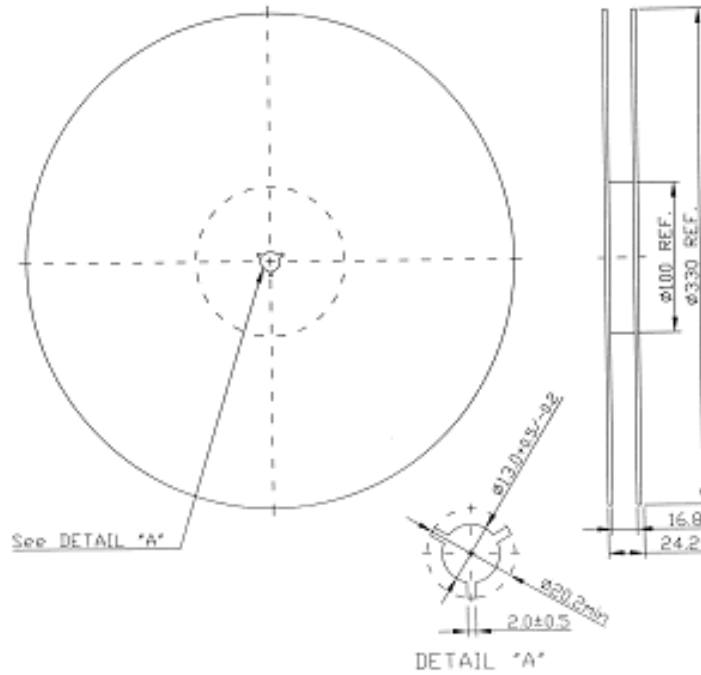
SAW Filter 433.420MHz
Part No: MP04027

Model: TA0723A
Rev No: 1

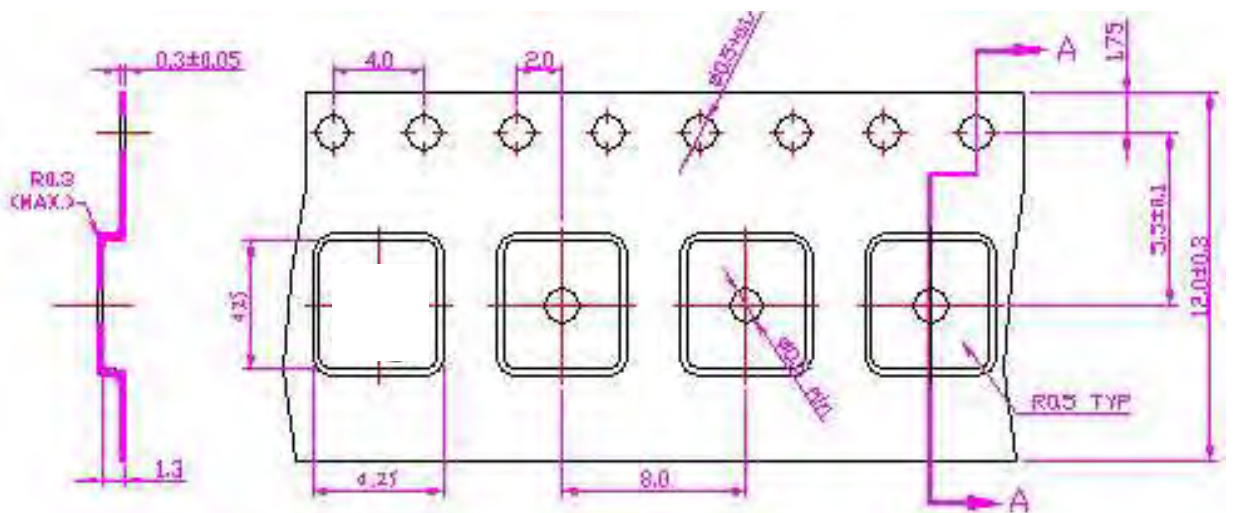
G. PACKING:

1. Reel Dimension

7" = 1000, 13" = 3000

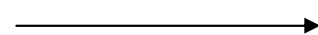


2. Tape Dimension



Section A-A

Direction of Feed



SAW Filter 433.420MHz
Part No: MP04027

Model: TA0723A
Rev No: 1

H. RECOMMENDED REFLOW PROFILE:

