

SAW Filter 925.0MHz
Part No: MP04346

Model: TA0754A
Rev. No: 2

A. MAXIMUM RATING:

Electrostatic Sensitive Device (ESD)

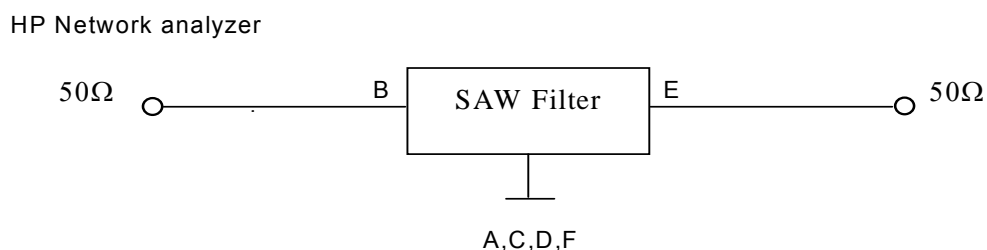
1. Input Power Level: 10 dBm
2. DC voltage: 5 V
3. Operating Temperature: -20°C to 75°C
4. Storage Temperature: -40°C to +85°C

B. CHARACTERISTICS:

Item	Min.	Typ.	Max.
Center frequency Fc MHz	-	925	-
Insertion loss 922 ~ 928MHz IL (dB)	-	2.9	4.2
Amplitude ripple 922 ~ 928MHz (dB)	-	0.4	2.0
Attenuation (Reference level from 0dB)			
775 ~ 835MHz (dB)	40	46	-
835 ~ 895MHz (dB)	36	45	-
970 ~ 992MHz (dB)	36	46	-
992 ~ 1075MHz (dB)	38	44	-
Source impedance Z _S (Ω)	-	50	-
Load impedance Z _L (Ω)	-	50	-

Note. No matching network required for operation at 50Ω

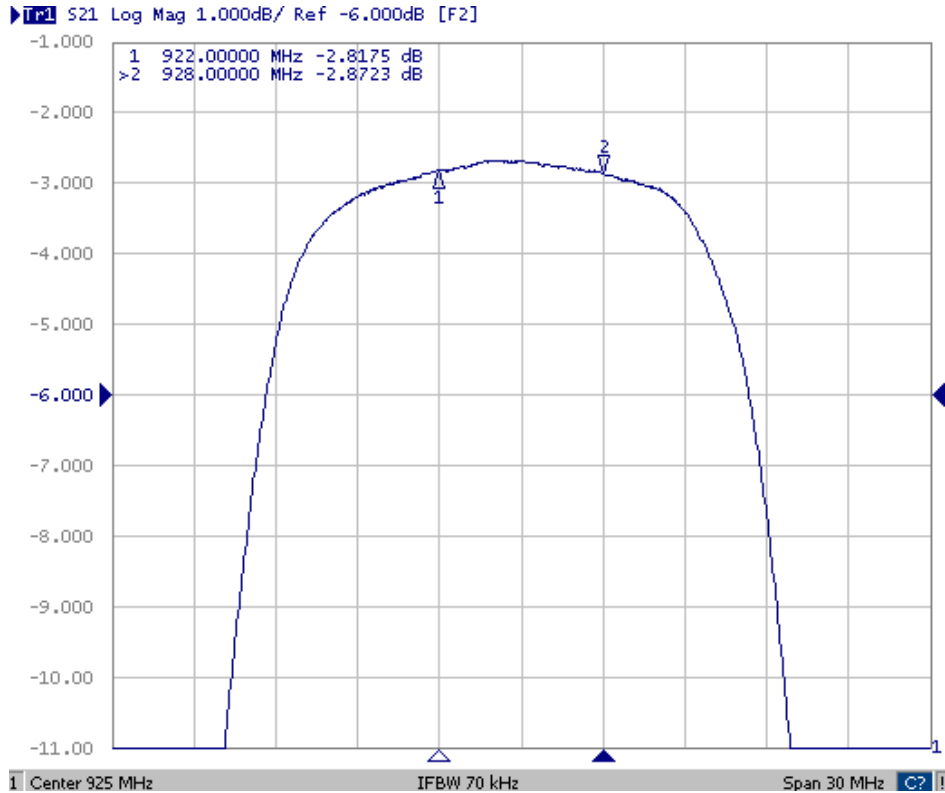
C. MEASUREMENT CIRCUIT:



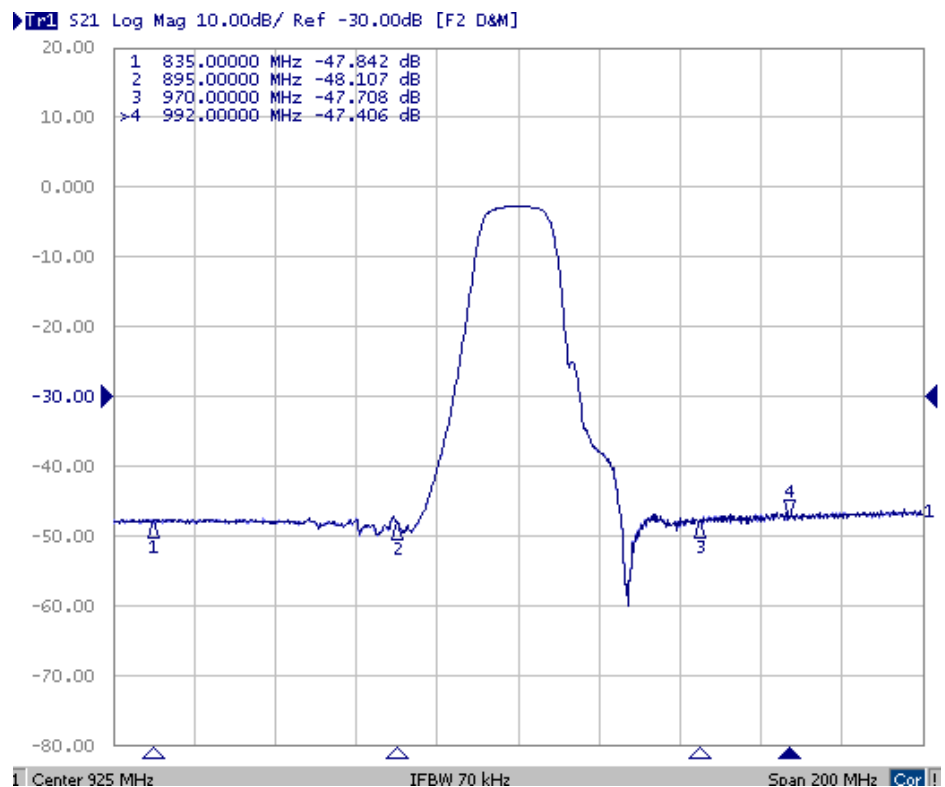
SAW Filter 925.0MHz
Part No: MP04346

Model: TA0754A
Rev. No: 2

1. Transfer Function:



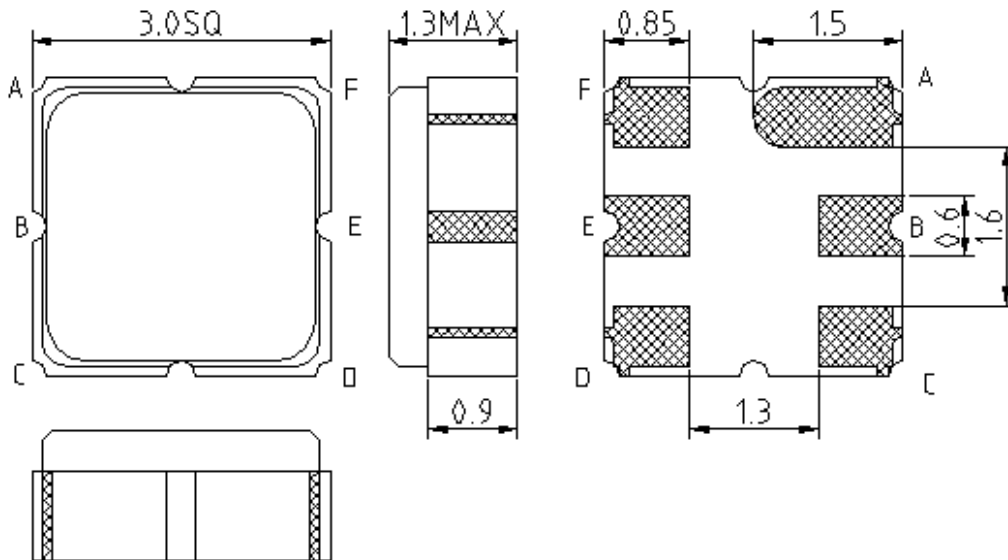
2. Wideband



SAW Filter 925.0MHz
Part No: MP04346

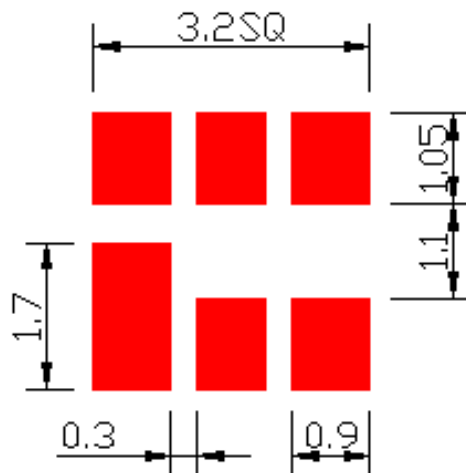
Model: TA0754A
Rev. No: 2

D. OUTLINE DRAWING:



B: Input
 E: Output
 A, C, D, F: Ground
 Unit: mm

E. PCB FOOTPRINT:

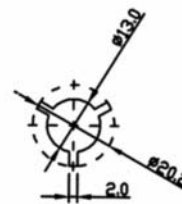
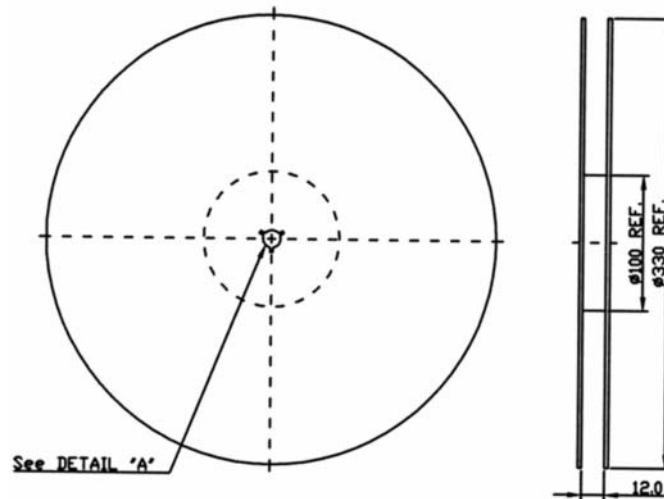


SAW Filter 925.0MHz
Part No: MP04346

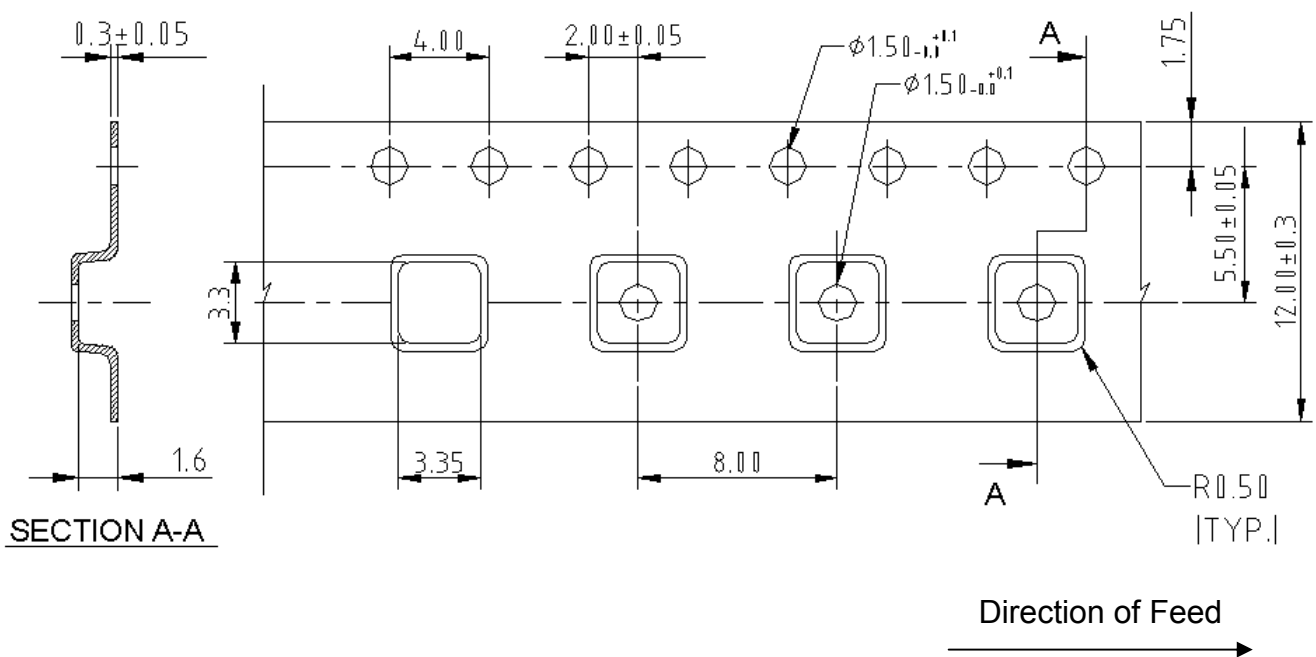
Model: TA0754A
Rev. No: 2

F. PACKING:

1. Reel Dimension (Please refer to FR-75D10 for packing quantity)



2. Tape Dimension



SAW Filter 925.0MHz
Part No: MP04346

Model: TA0754A
Rev. No: 2

G. RECOMMENDED REFLOW PROFILE:

1. Preheating shall be fixed at 150 ~ 180°C for 60 ~ 90 seconds.
2. Ascending time to preheating temperature 150°C shall be 30 seconds min.
3. Heating shall be fixed at 220°C for 50 ~ 80 seconds and at 245 ~ 260°C peak (min. 10 sec).
4. Time: 2 times.

