

SAW Filter 276.50MHz
Part No: MP04572

Model: TB1106A
Rev No: 1

A. MAXIMUM RATING:

Electrostatic Sensitive Device

1. Operating temperature range: -40°C to 85°C
2. Storage temperature range: -40°C to 85°C
3. Input Power Level: 10dBm
4. Maximum DC Voltage: 10V

B. CHARACTERISTICS:

| Item | Unit | Min. | Typ. | Max. |
|--|--------|------|-------|------|
| Center frequency Fc | MHz | - | 276.5 | - |
| Insertion Loss IL | dB | - | 11.4 | 12.0 |
| -1dB bandwidth | MHz | 40 | 44 | - |
| -3dB bandwidth | MHz | - | 47 | - |
| Passband Ripple Fc ± 20MHz | dB | - | 0.7 | 1.0 |
| Attenuation: (Reference level from Min IL) | | | | |
| DC ~ 236MHz | dB | 40 | 54 | - |
| 316MHz ~ 500MHz | dB | 40 | 49 | - |
| 500MHz ~ 1000MHz | dB | 40 | 55 | - |
| Fc -30MHz | dB | 30 | 50 | - |
| Fc +30MHz | dB | 30 | 45 | - |
| Temperature Coefficient | ppm/°C | - | -94 | - |
| Source Impedance | Ohm | - | 50 | - |
| Load Impedance | Ohm | - | 50 | - |

SAW Filter 276.50MHz
Part No: MP04572

Model: TB1106A
Rev No: 1

C. FREQUENCY CHARACTERISTICS:

1. Narrow band Response: (span 300MHz)

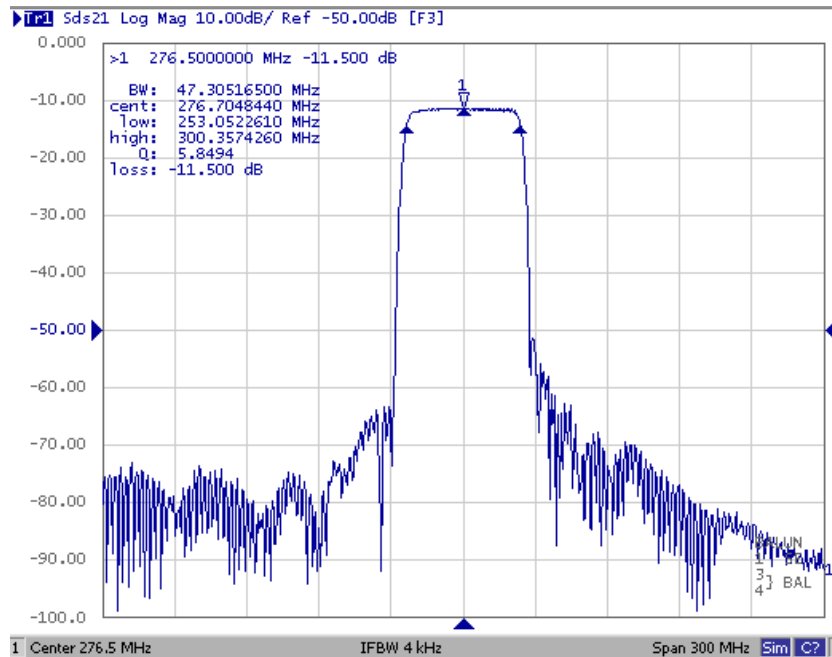


Fig. 1: Horizontal: 30MHz / Div, Vertical: 10Db / Div

2. Pass band Response and Group Time Delay response:

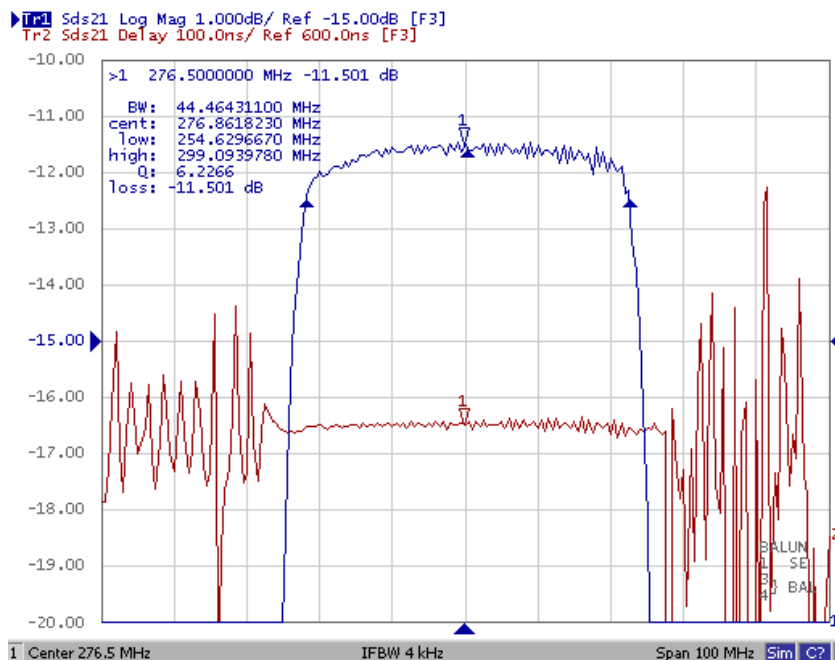
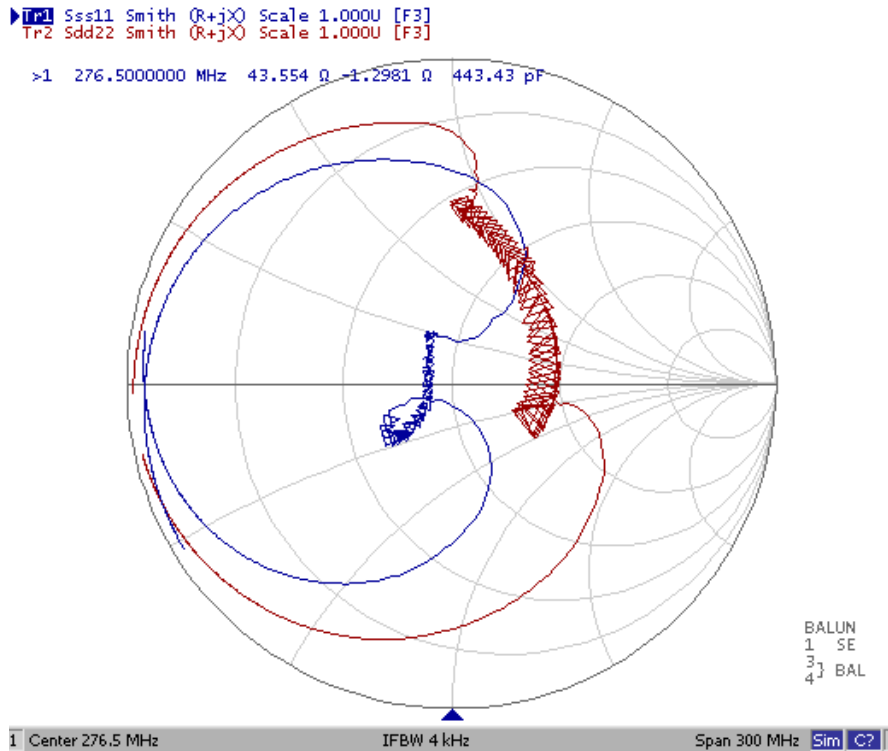


Fig. 2: Horizontal: 10MHz / Div, Vertical: 1dB / Div, Vertical: 100ns / Div

SAW Filter 276.50MHz
Part No: MP04572

Model: TB1106A
Rev No: 1

3. Smith Chart:



4. Wide band Response:

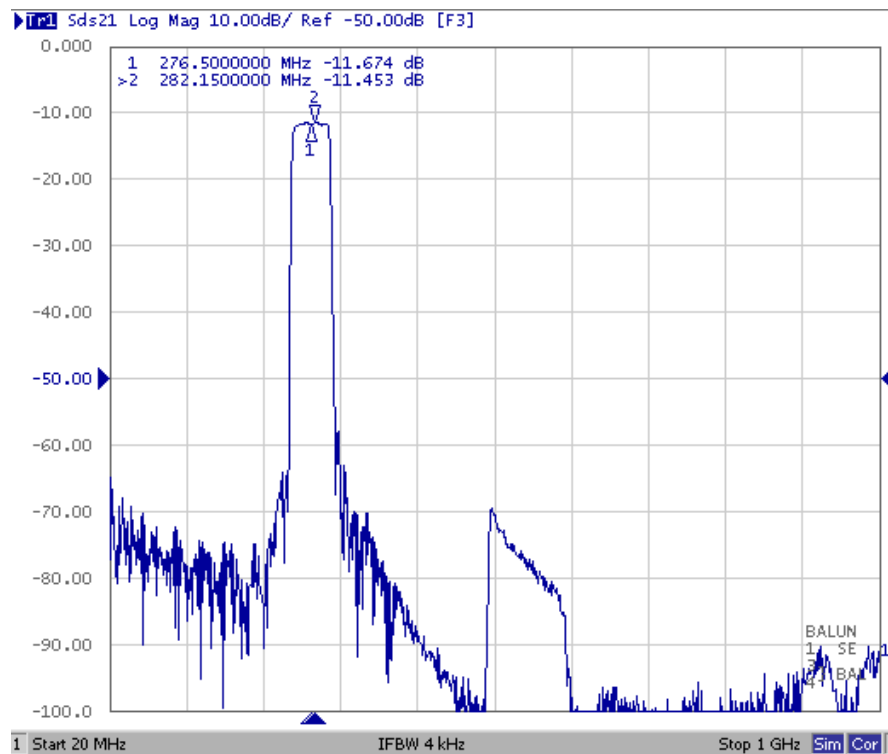
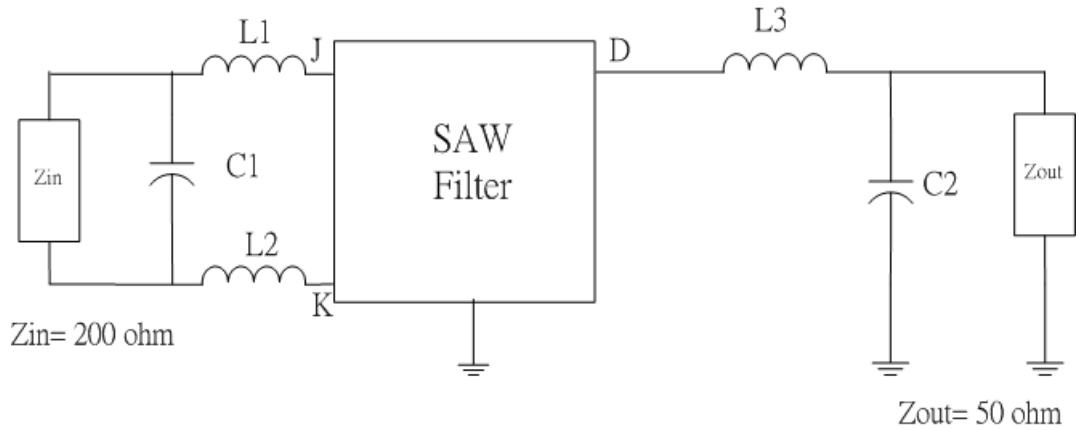


Fig. 4: Horizontal: 90MHz / Div, Vertical: 10dB / Div

SAW Filter 276.50MHz
Part No: MP04572

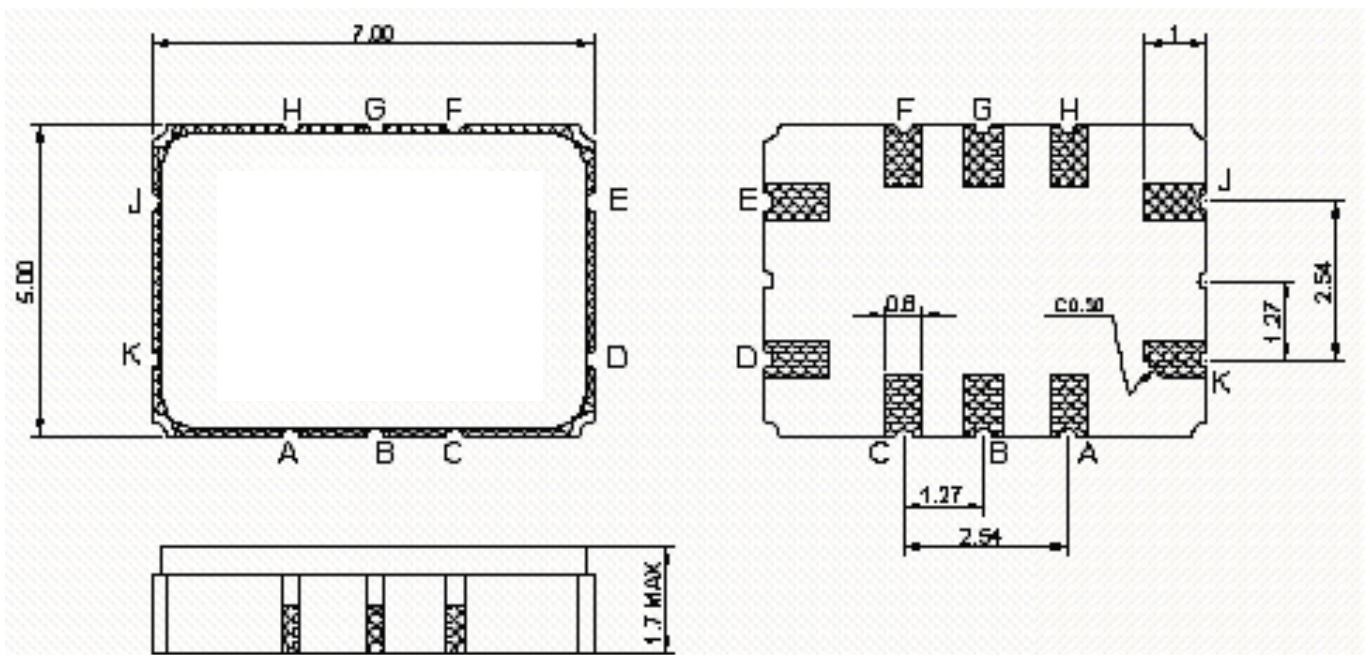
Model: TB1106A
Rev No: 1

D. MATCHING CIRCUIT:



$$L1 = L2 = 18\text{nH} \quad L3 = 18\text{nH} \quad C1 = 8\text{pF} \quad C2 = 27\text{pF}$$

E. OUTLINE DRAWING:

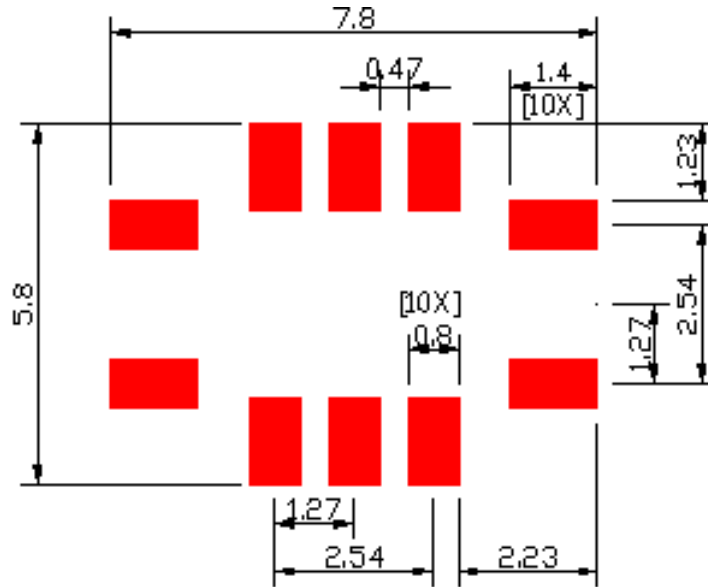


- J: RF input
 - K: RF balance input or to be ground
 - D: RF output
 - E: RF output ground
 - A, B, C, F, G, H: Ground
- Unit: mm

SAW Filter 276.50MHz
Part No: MP04572

Model: TB1106A
Rev No: 1

F. PCB FOOTPRINT:



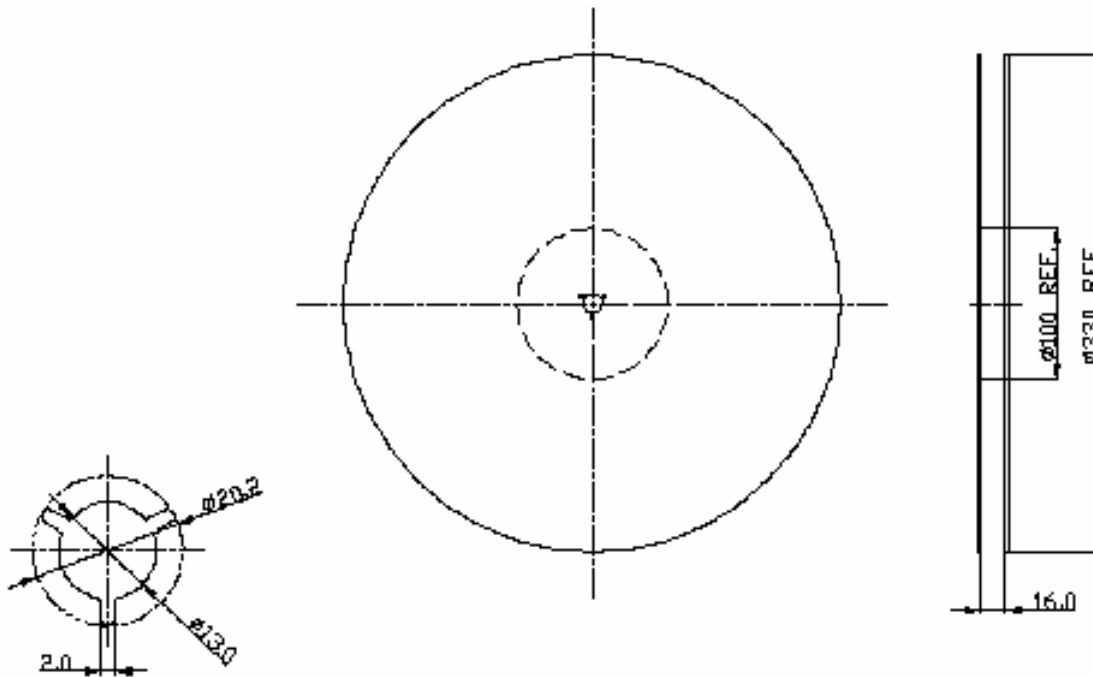
SAW Filter 276.50MHz
Part No: MP04572

Model: TB1106A
Rev No: 1

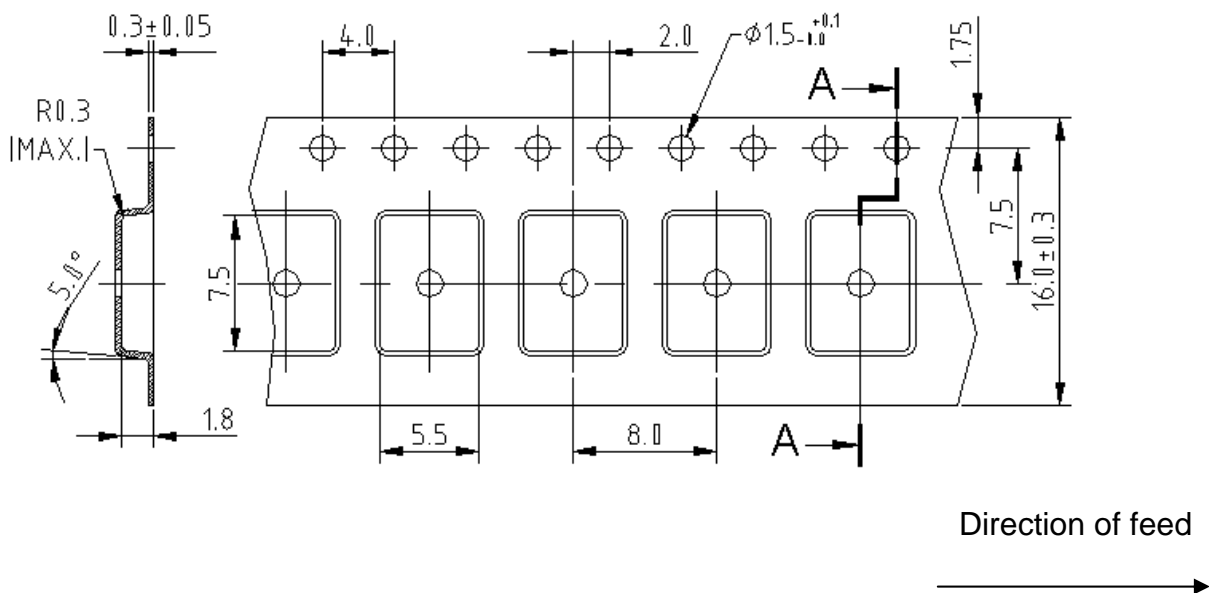
G. PACKING:

1. Reel Dimension

(Please refer to FR-75D10 for packing quantity)



2. Tape Dimension



SAW Filter 276.50MHz
Part No: MP04572

Model: TB1106A
Rev No: 1

H. RECOMMENDED REFLOW PROFILE:

