

SAW Filter 190.0MHz
Part No: MP04740

Model: TB0909A
Rev No: 1

A. MAXIMUM RATING:

1. Operating temperature range: -30°C to 85°C
2. Storage temperature range: -40°C to 85°C
3. Input Power Level: 10dBm
4. Maximum DC Voltage: 10V

B. CHARACTERISTICS:

Item	Unit	Min.	Typ.	Max.
Center frequency Fc	MHz	-	190	-
Insertion Loss IL	dB	-	7.7	10.0
1dB Lower Band edge	MHz	-	187.2	188
1dB Upper Band edge		192	192.6	
10dB Lower Band edge		185	185.8	
10dB Upper Band edge			194	195
30dB Lower Band edge		183.5	185.0	
30dB Upper Band edge			194.8	196.5
Passband Ripple Fc ± 2MHz	dB	-	0.4	1.0
Group Delay Ripple Fc ± 2MHz	ns	-	50	200
Temperature Coefficient	ppm/°C	-	-23	-
Source Impedance	Ohm	-	50	-
Load Impedance	Ohm	-	50	-

SAW Filter 190.0MHz
Part No: MP04740

Model: TB0909A
Rev No: 1

C. FREQUENCY CHARACTERISTICS:

1. Wide band Response: (span 100MHz)

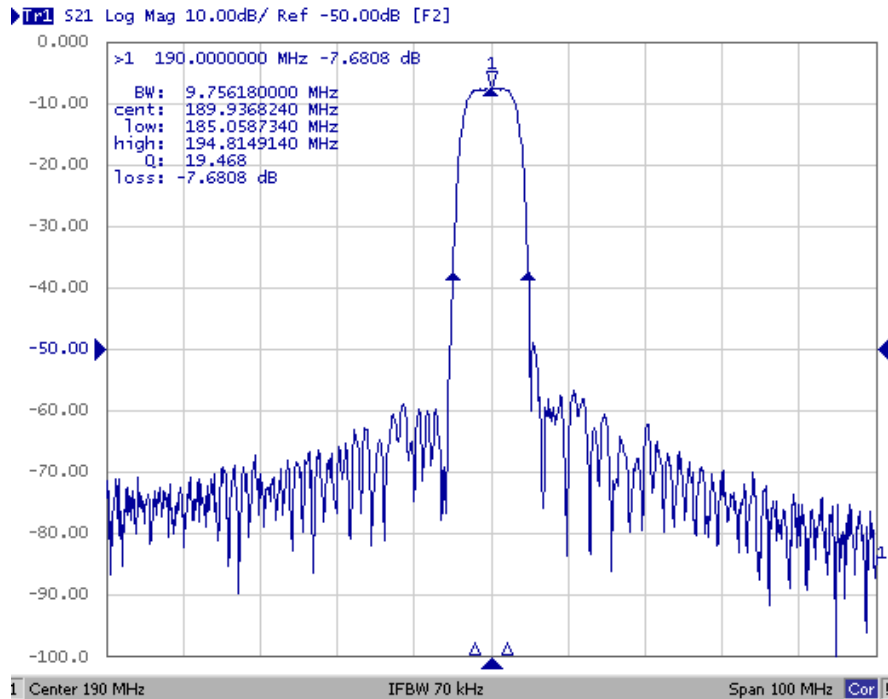


Fig. 1: Horizontal: 10MHz / Div, Vertical: 10Db / Div

2. Pass band Response and Group Time Delay response:

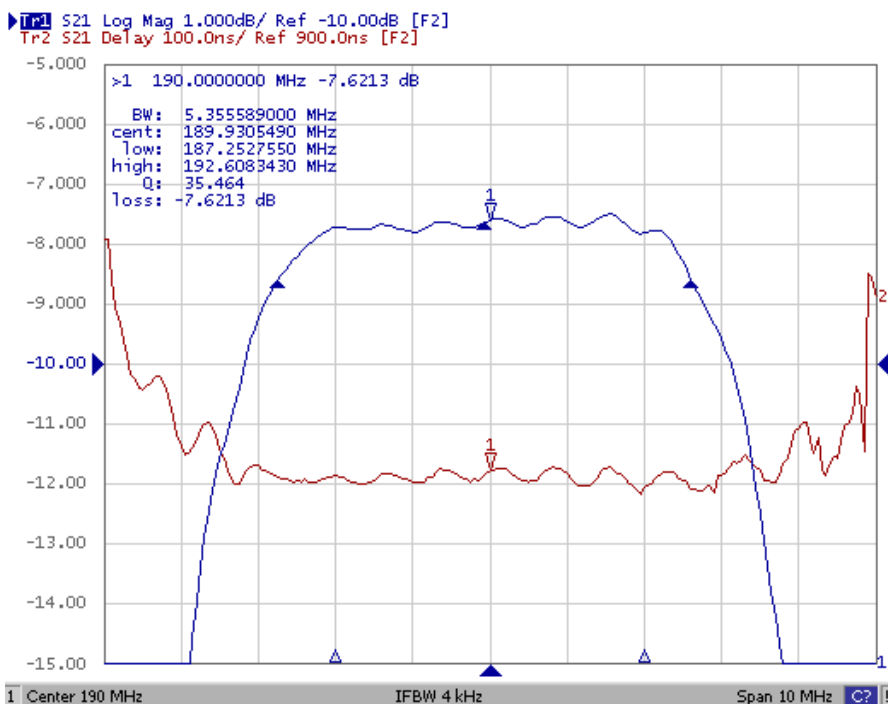
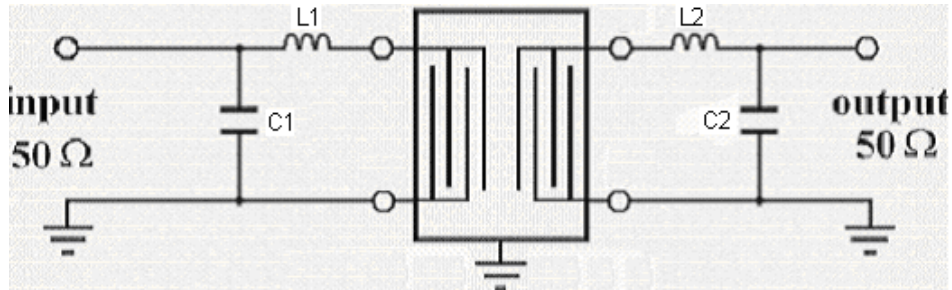


Fig. 2: Horizontal: 1MHz / Div, Vertical: 1dB / Div, Vertical: 100ns / Div

SAW Filter 190.0MHz
Part No: MP04740

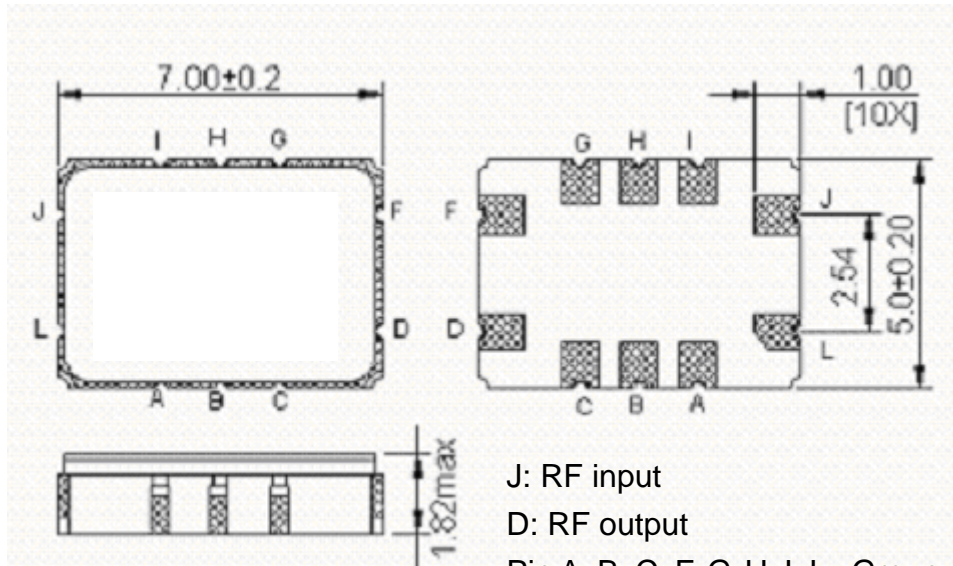
Model: TB0909A
Rev No: 1

D. MATCHING CIRCUIT:



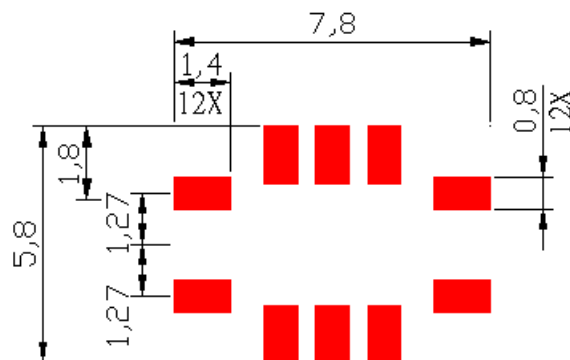
$L1 = 47\text{nH}$, $L2 = 56\text{nH}$, $C1 = 24\text{pF}$, $C2 = 24\text{pF}$

E. OUTLINE DRAWING:



J: RF input
 D: RF output
 Pin A, B, C, F, G, H, I, L - Ground
 Unit: mm

F. PCB FOOTPRINT:

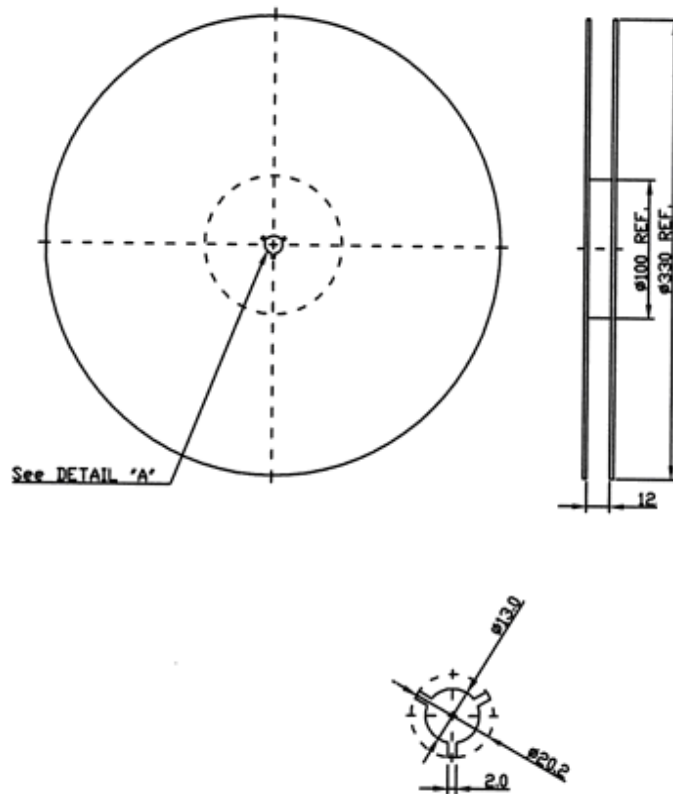


SAW Filter 190.0MHz
Part No: MP04740

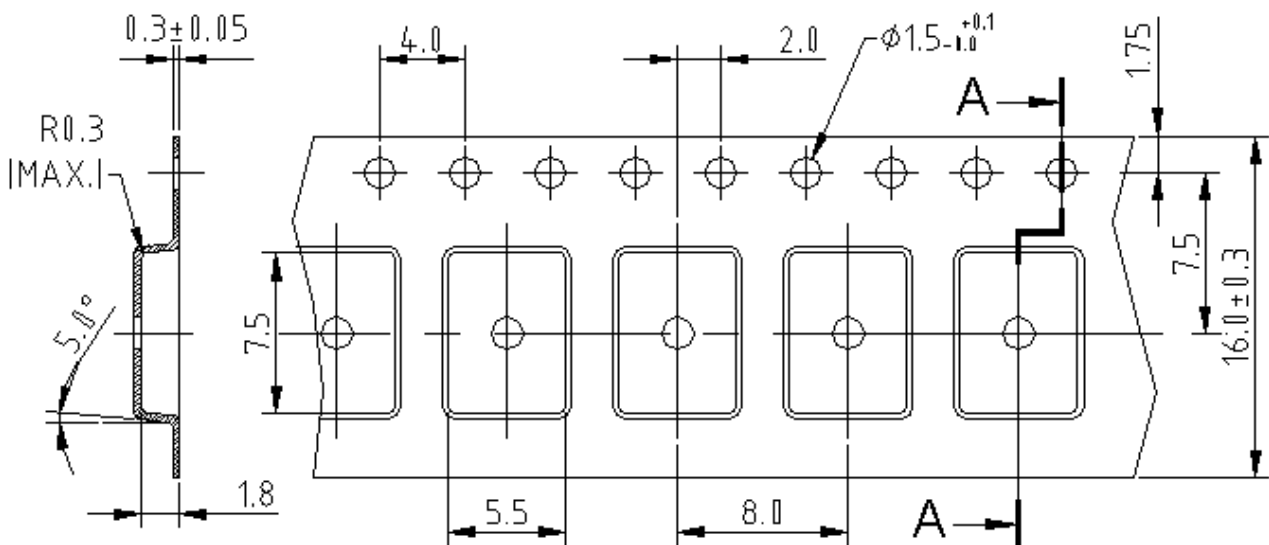
Model: TB0909A
Rev No: 1

G. PACKING:

1. Reel Dimension



2. Tape Dimension



SAW Filter 190.0MHz
Part No: MP04740

Model: TB0909A
Rev No: 1

H. RECOMMENDED REFLOW PROFILE:

