

**SAW Filter 1400.0MHz**  
**Part No: MP04754**

**Model: TA1444A**  
**Rev No: 1**

**A. MAXIMUM RATING:**

**Electrostatic Sensitive Device (ESD)**

1. Input Power Level: 10dBm
2. DC voltage: 3V
3. Operating Temperature: -40°C to 85°C
4. Storage Temperature: -50°C to +125°C

**B. CHARACTERISTICS:**

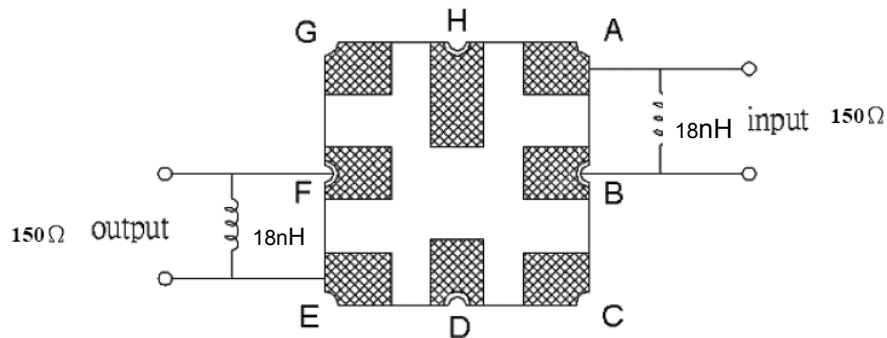
1. Terminating source impedance (differential):  $Z_S = 150\Omega // 18nH$
2. Terminating load impedance (differential):  $Z_L = 150\Omega // 18nH$

Item	Unit	Min.	Typ.	Max.
Center frequency Fc	MHz	-	1400	-
Insertion loss (1380 ~ 1420MHz) IL	dB	-	3.1	5
Amplitude ripple (1380 ~ 1420MHz)	dB	-	0.9	2
VSWR (1380 ~ 1420MHz)	-	-	1.9	2.5
Group delay ripple (1380 ~ 1420MHz)	ns	-	11	25
Attenuation (reference from 0dB)				
10 ~ 860MHz	dB	55	65	-
860 ~ 1100MHz	dB	46	58	-
1100 ~ 1308.1MHz	dB	40	55	-
1492.2 ~ 1608.4MHz	dB	33	47	-
1608.4 ~ 2000MHz	dB	40	54	-
2000 ~ 2250MHz	dB	36	58	-
2250 ~ 6000MHz	dB	15	20	-
Temperature Coefficient of Frequency	ppm/°C	-	-36	-

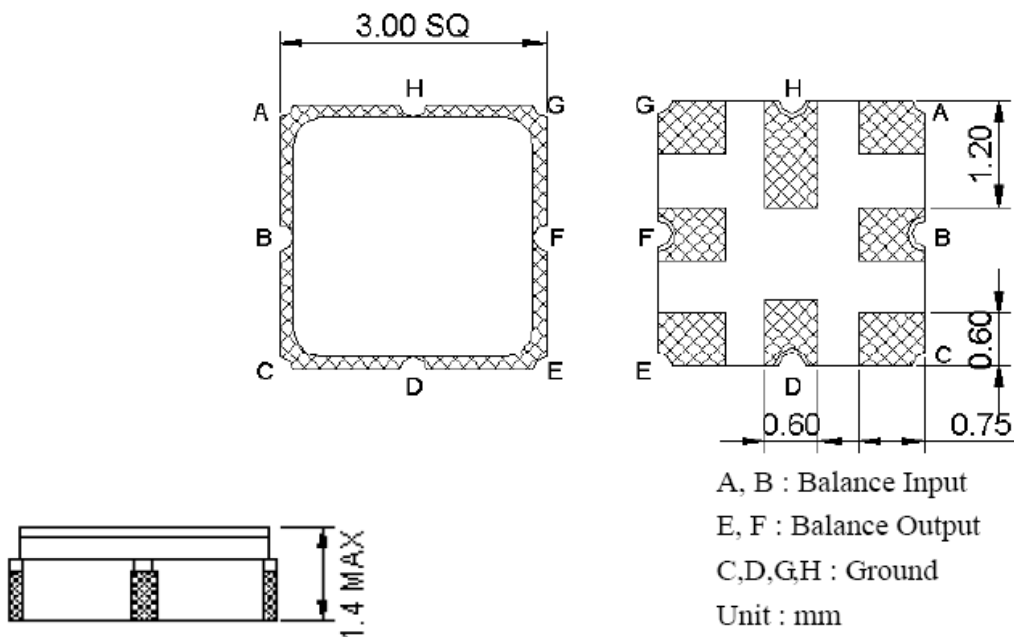
**SAW Filter 1400.0MHz**  
**Part No: MP04754**

**Model: TA1444A**  
**Rev No: 1**

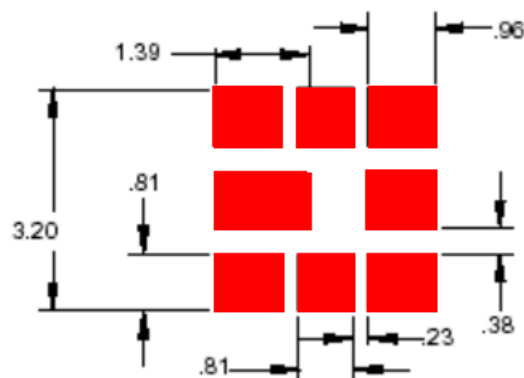
**C. MEASUREMENT CIRCUIT:**



**D. OUTLINE DRAWING:**



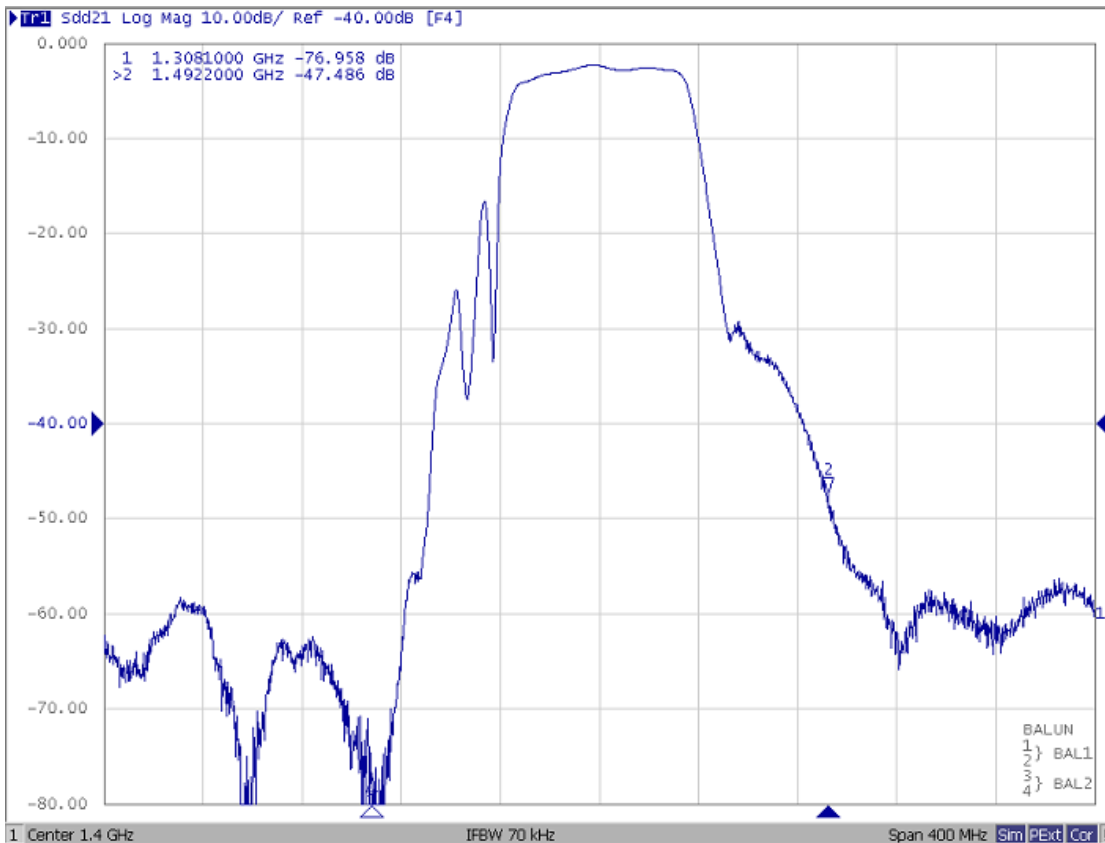
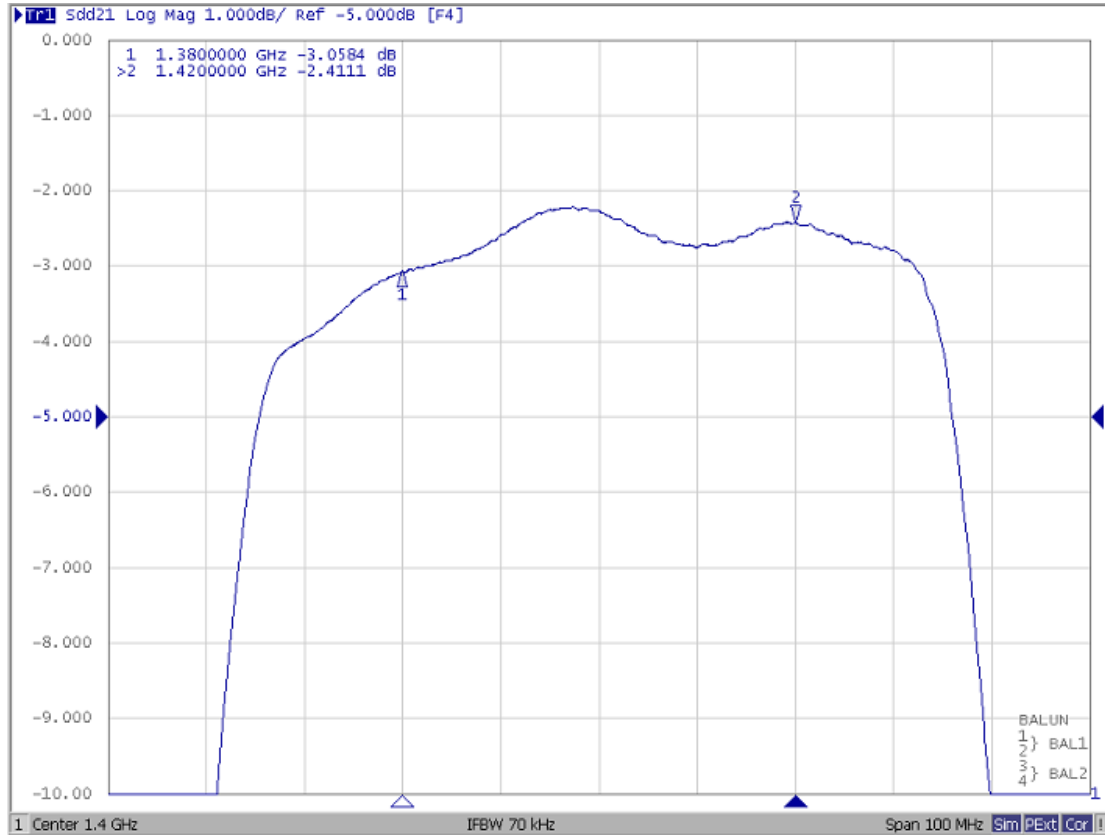
**E. PCB FOOTPRINT:**



**SAW Filter 1400.0MHz**  
**Part No: MP04754**

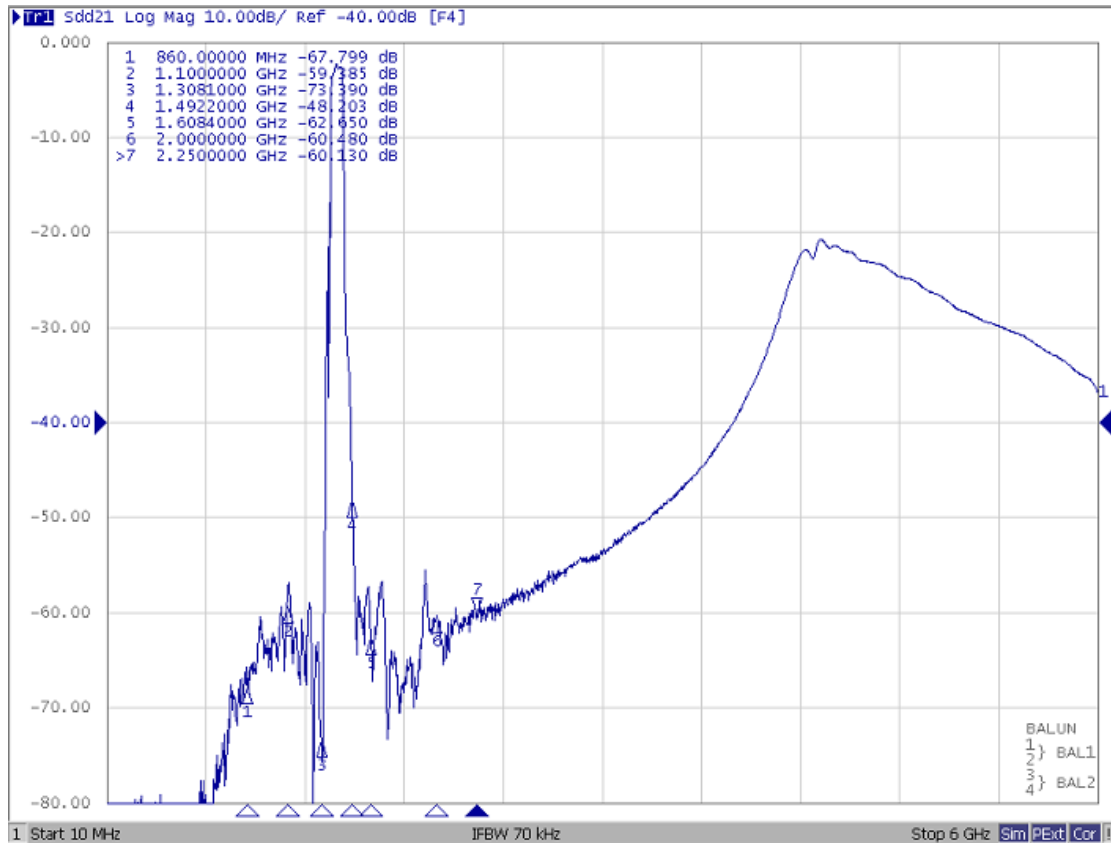
**Model: TA1444A**  
**Rev No: 1**

**F. FREQUENCY CHARACTERISTICS:**



**SAW Filter 1400.0MHz**  
**Part No: MP04754**

**Model: TA1444A**  
**Rev No: 1**

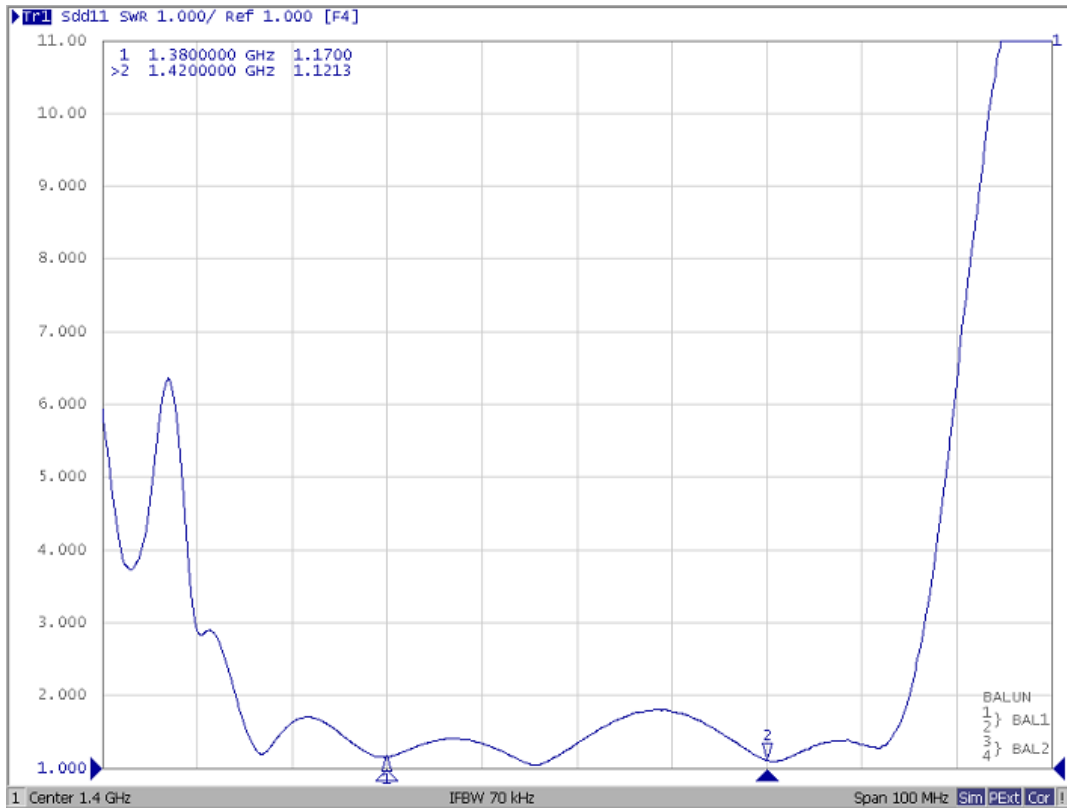


**SAW Filter 1400.0MHz**  
**Part No: MP04754**

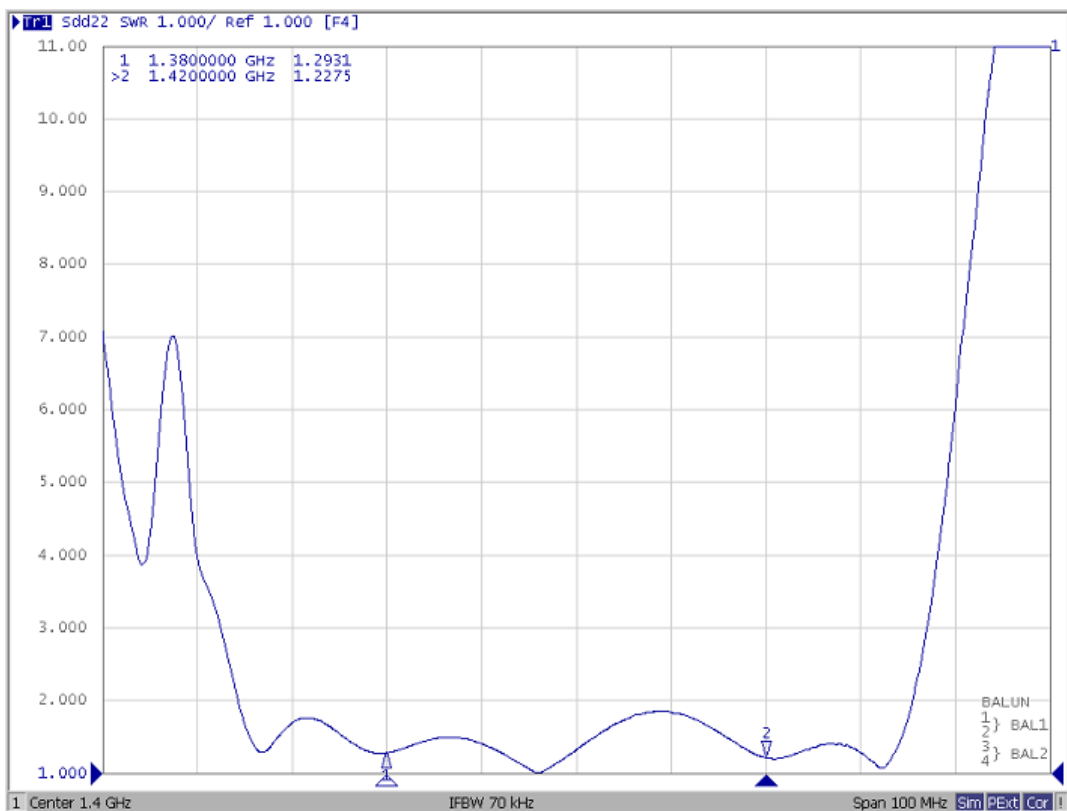
**Model: TA1444A**  
**Rev No: 1**

Reflection Functions

S11



S22

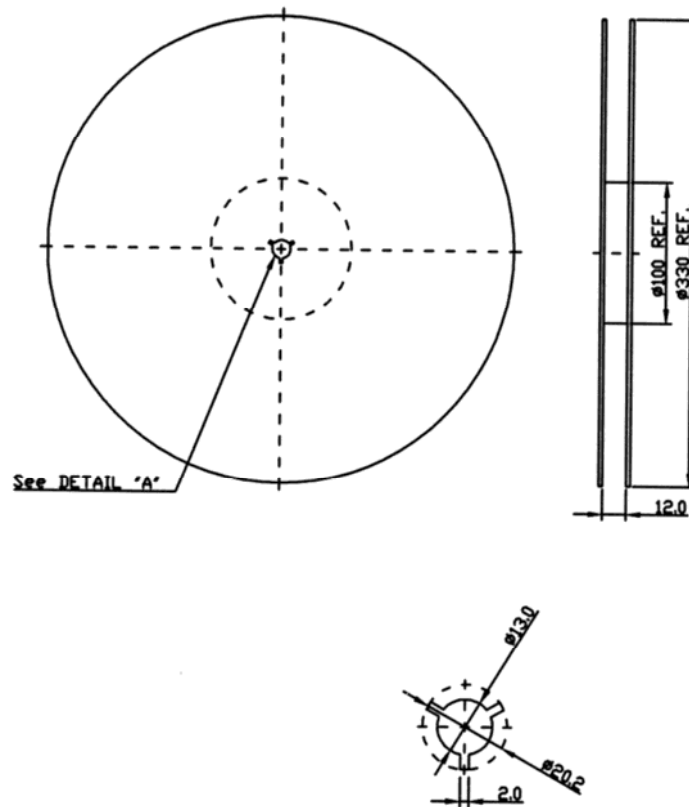


**SAW Filter 1400.0MHz**  
**Part No: MP04754**

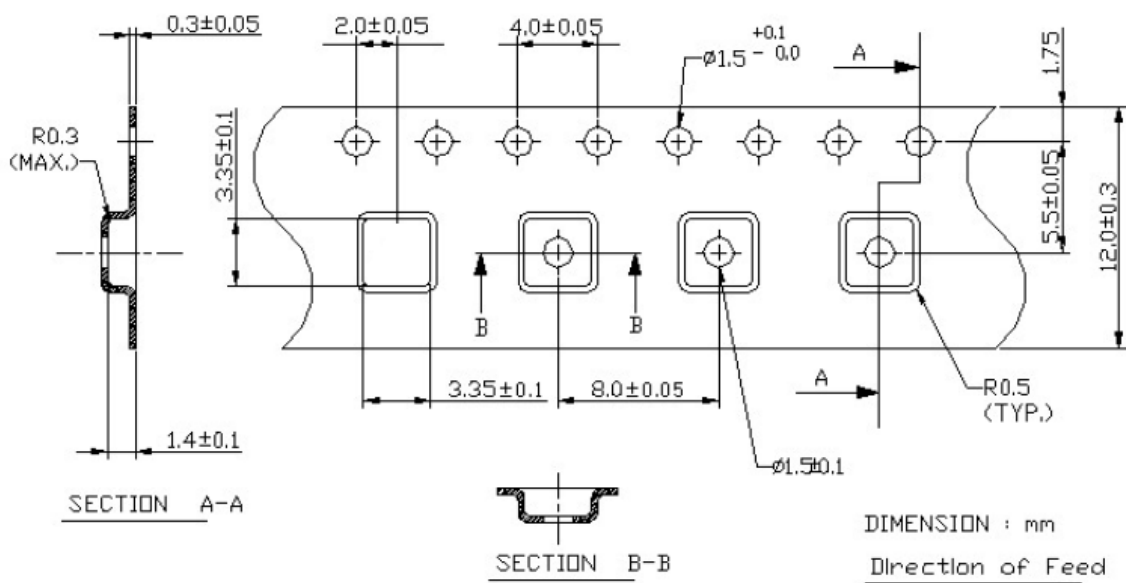
**Model: TA1444A**  
**Rev No: 1**

**G. PACKING:**

1. Reel Dimension



2. Tape Dimension



**SAW Filter 1400.0MHz**  
**Part No: MP04754**

**Model: TA1444A**  
**Rev No: 1**

**H. RECOMMENDED REFLOW PROFILE:**

