

SAW Filter 534.50MHz
Part No: MP04838

Model: TB1069A
Rev No: 1

A. MAXIMUM RATING:

Electrostatic Sensitive Device

1. Operating temperature range: -30°C to 60°C
2. Storage temperature range: -40°C to 85°C
3. Input Power Level: 10dBm
4. Maximum DC Voltage: 10V

B. CHARACTERISTICS:

| Item | Unit | Min. | Typ. | Max. |
|------------------------------------------------------------|---------------------|------|--------|------|
| Center frequency Fc | MHz | - | 534.5 | - |
| Insertion Loss IL | dB | - | 6.4 | 8.5 |
| -1dB bandwidth | MHz | 0.40 | 0.63 | - |
| Passband Ripple Fc ± 0.2MHz | dB | - | 0.6 | 1.2 |
| Attenuation (Reference level from minimum Insertion loss) | | | | |
| 10MHz ~ 528.5MHz | dB | 40 | 50 | - |
| 528.5MHz ~ 533.5MHz | dB | 28 | 32 | - |
| 535.5MHz ~ 540.5MHz | dB | 30 | 36 | - |
| 540.5MHz ~ 1000MHz | dB | 36 | 39 | - |
| 1000MHz ~ 2500MHz | dB | 20 | 70 | - |
| Temperature Coefficient | ppm/°C ² | - | -0.036 | - |
| Source Impedance | Ohm | - | 50 | - |
| Load Impedance | Ohm | - | 50 | - |

SAW Filter 534.50MHz
Part No: MP04838

Model: TB1069A
Rev No: 1

C. FREQUENCY CHARACTERISTICS:

1. Narrow band Response:

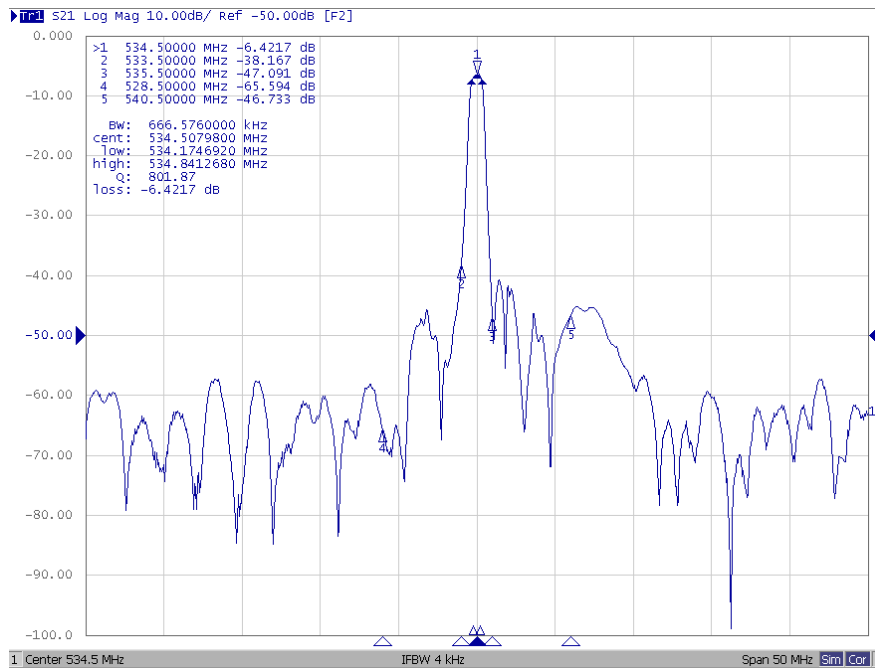


Fig. 1. Horizontal: 5MHz / Div, Vertical: 10dB / Div

2. Pass band Response and Group Delay Response:

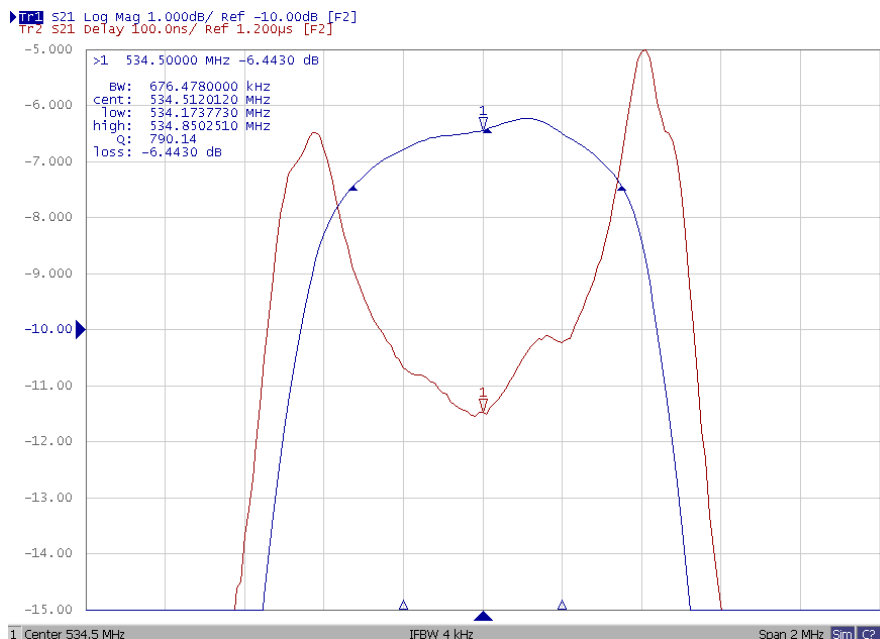
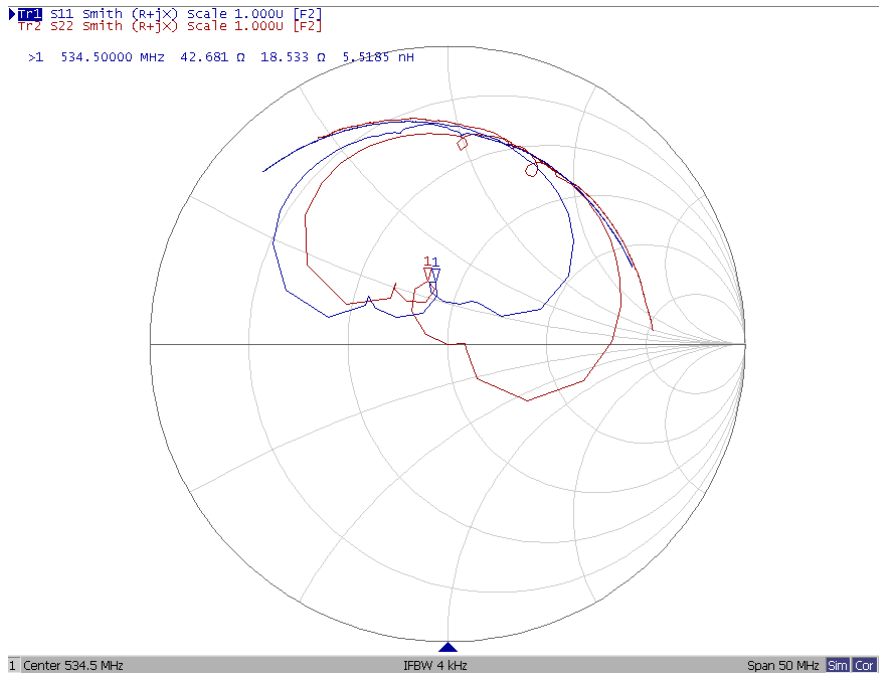


Fig. 2. Horizontal: 0.2MHz / Div, Vertical: 1dB / Div, Vertical: 100ns / Div

SAW Filter 534.50MHz
Part No: MP04838

Model: TB1069A
Rev No: 1

3. Smith Chart:



4. Wide band Response:

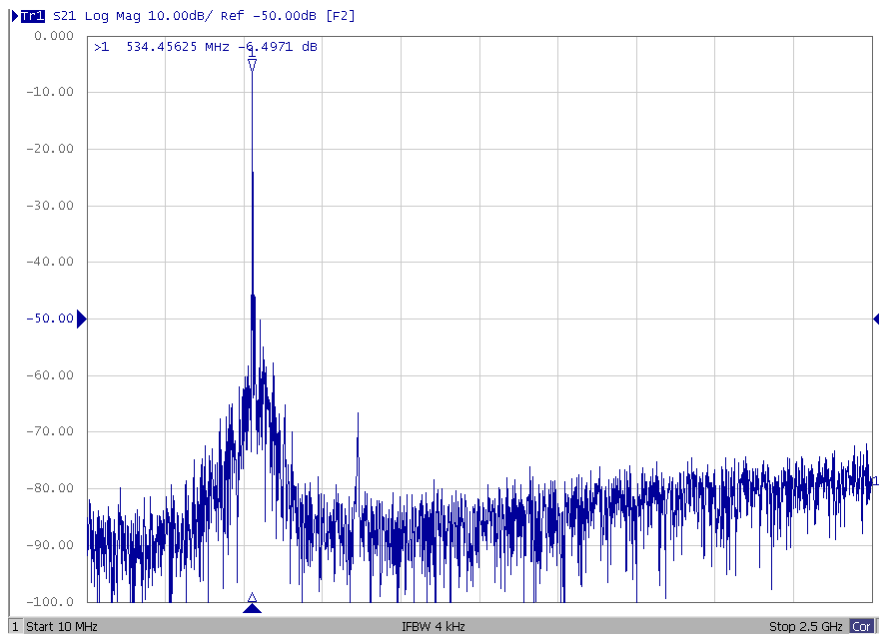
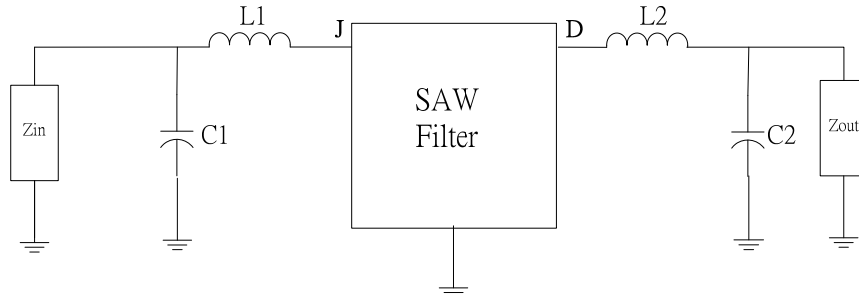


Fig. 4. Horizontal: 250MHz / Div, Vertical: 10dB / Div

SAW Filter 534.50MHz
Part No: MP04838

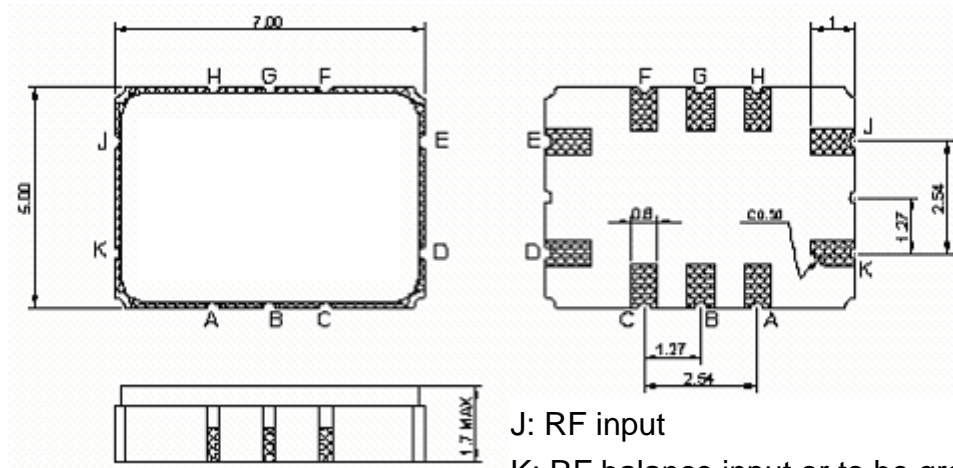
Model: TB1069A
Rev No: 1

D. MATCHING CIRCUIT:



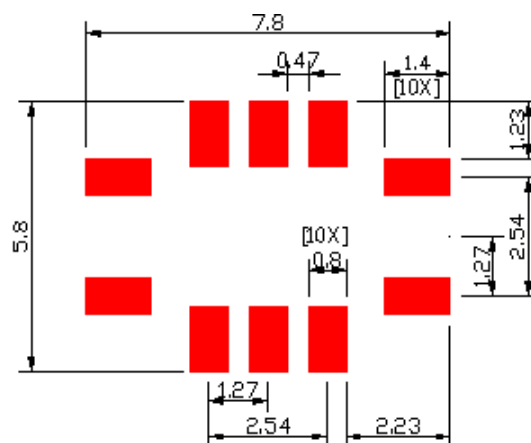
$L1 = 24\text{nH}$ $C1 = 8\text{pF}$ $L2 = 22\text{nH}$ $C2 = 8\text{pF}$

E. OUTLINE DRAWING:



J: RF input
 K: RF balance input or to be ground
 D: RF output
 E: RF balance output or to be ground
 A, B, C, F, G, H: Ground
 Unit: mm

F. PCB FOOTPRINT:

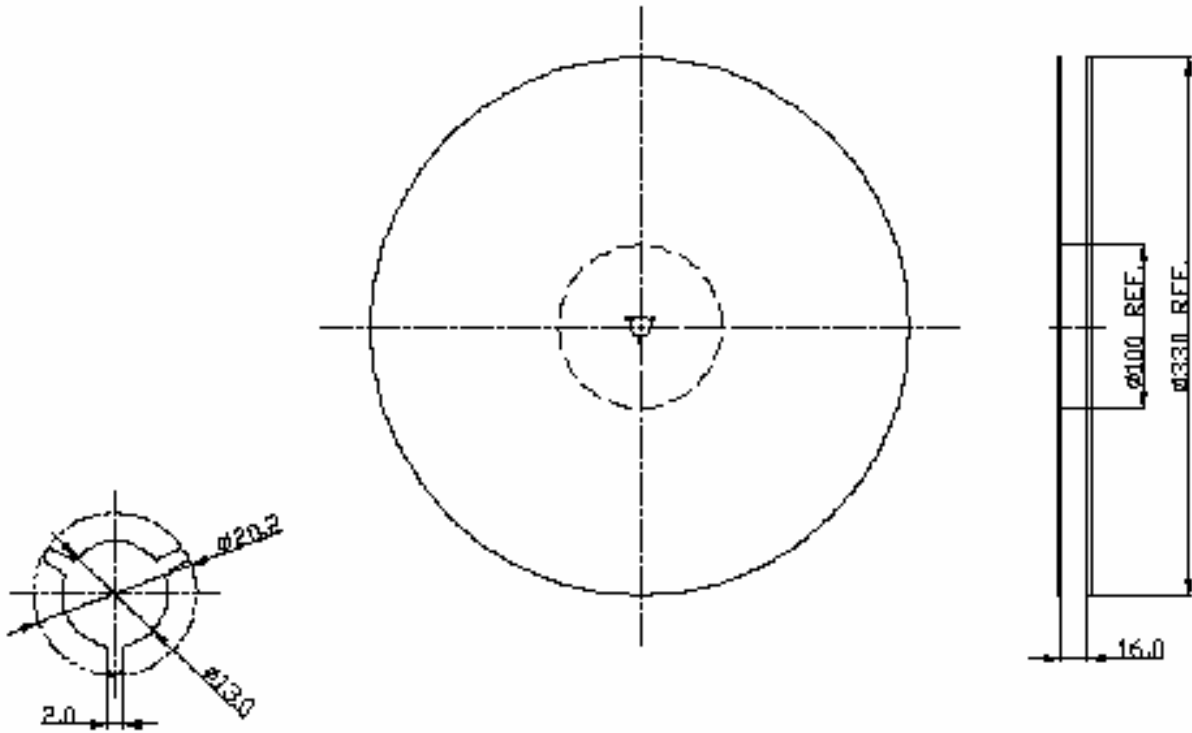


SAW Filter 534.50MHz
Part No: MP04838

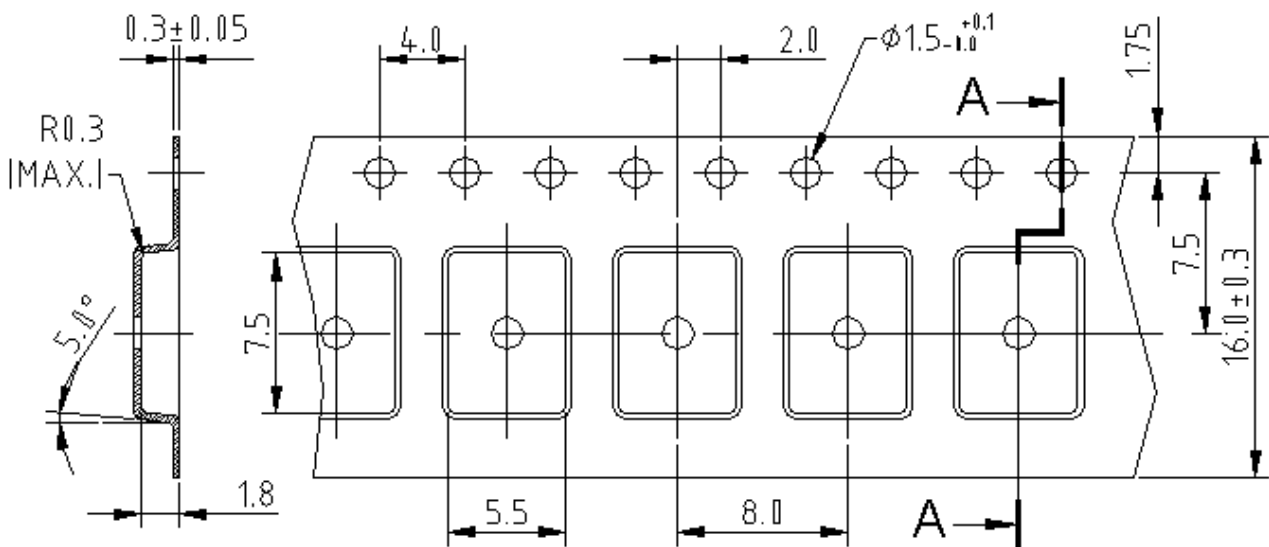
Model: TB1069A
Rev No: 1

G. PACKING:

1. Reel Dimension: (Reel count: 7" = 1000)



2. Tape Dimension



SAW Filter 534.50MHz
Part No: MP04838

Model: TB1069A
Rev No: 1

H. RECOMMENDED REFLOW PROFILE:

