

SAW Filter 1516.0MHz

Model: TA1445A

Part No: MP04872

Rev No: 1

A. MAXIMUM RATING:

Electrostatic Sensitive Device (ESD)

1. Input Power Level: 10dBm
2. DC voltage: 3V
3. Operating Temperature: -40°C to 85°C
4. Storage Temperature: -50°C to +125°C

B. CHARACTERISTICS:

1. Terminating source impedance (differential): $Z_S = 150\Omega // 10nH$
2. Terminating load impedance (differential): $Z_L = 150\Omega // 10nH$

Item	Unit	Min.	Typ.	Max.
Center frequency Fc	MHz	-	1516	-
Insertion loss (1496 ~ 1536MHz) IL	dB	-	3.3	5
Amplitude ripple (1496 ~ 1536MHz)	dB	-	0.6	2
VSWR (1496 ~ 1536MHz)	-	-	1.8	2.5
Group delay ripple (1496 ~ 1536MHz)	ns	-	9	25
Attenuation (reference from 0dB)				
10 ~ 860MHz	dB	55	70	-
860 ~ 1100MHz	dB	46	70	-
1100 ~ 1423.9MHz	dB	40	56	-
1608.4 ~ 1724.6MHz	dB	33	39	-
1724.6 ~ 2000MHz	dB	40	54	-
2000 ~ 2250MHz	dB	36	52	-
2250 ~ 6000MHz	dB	15	20	-
Temperature Coefficient of Frequency	ppm/°C	-	-36	-

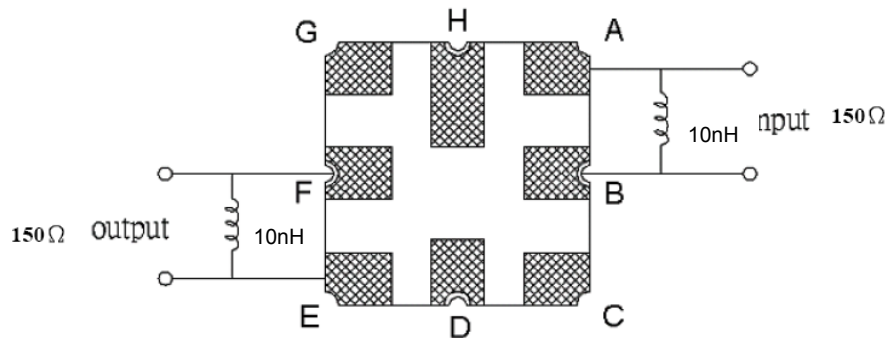
SAW Filter 1516.0MHz

Model: TA1445A

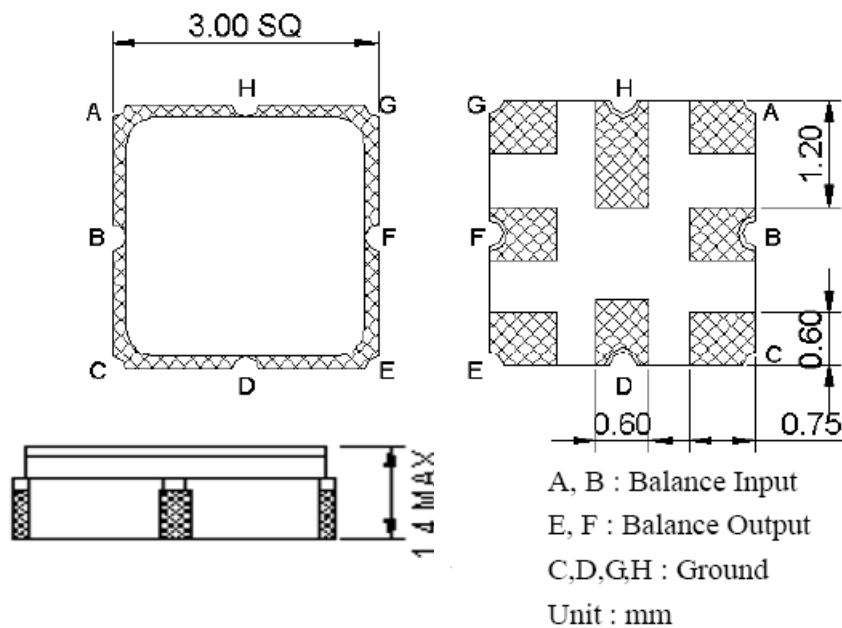
Part No: MP04872

Rev No: 1

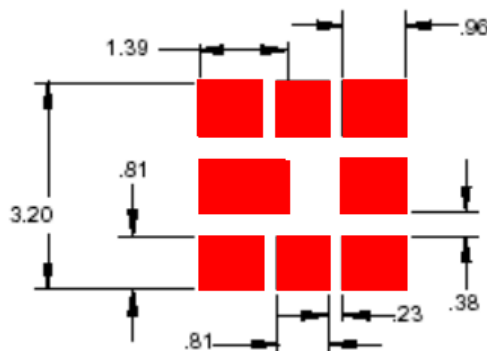
C. MEASUREMENT CIRCUIT:



D. OUTLINE DRAWING:



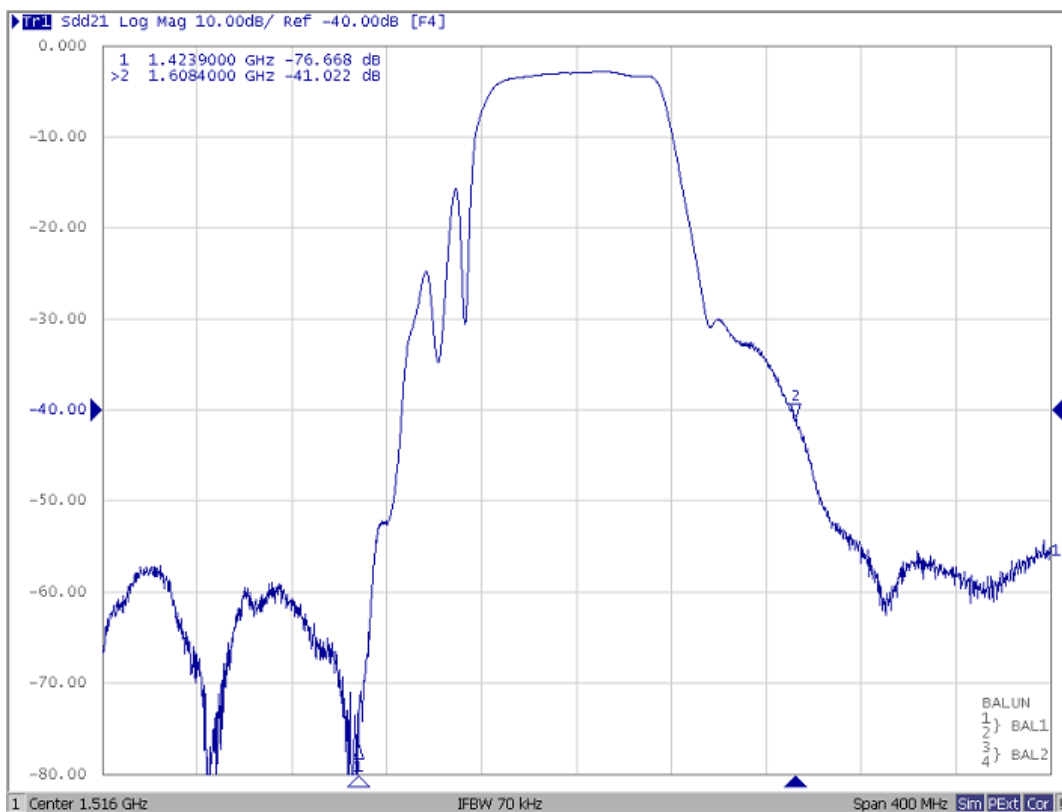
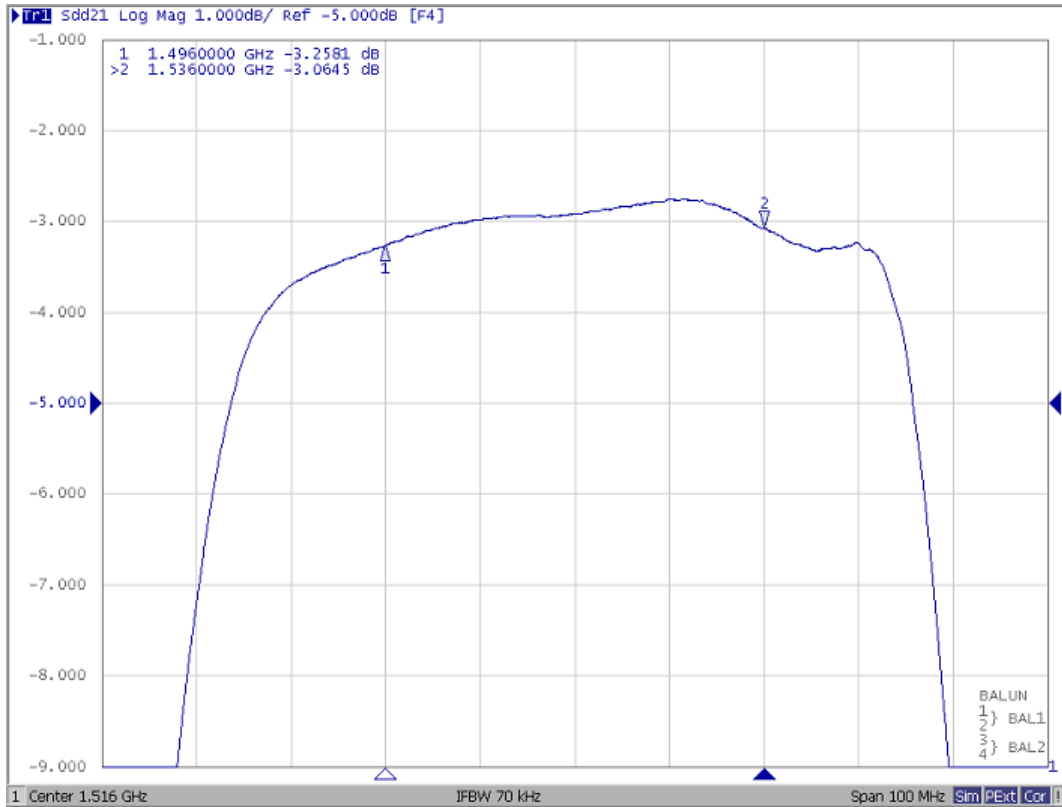
E. PCB FOOTPRINT:



SAW Filter 1516.0MHz
Part No: MP04872

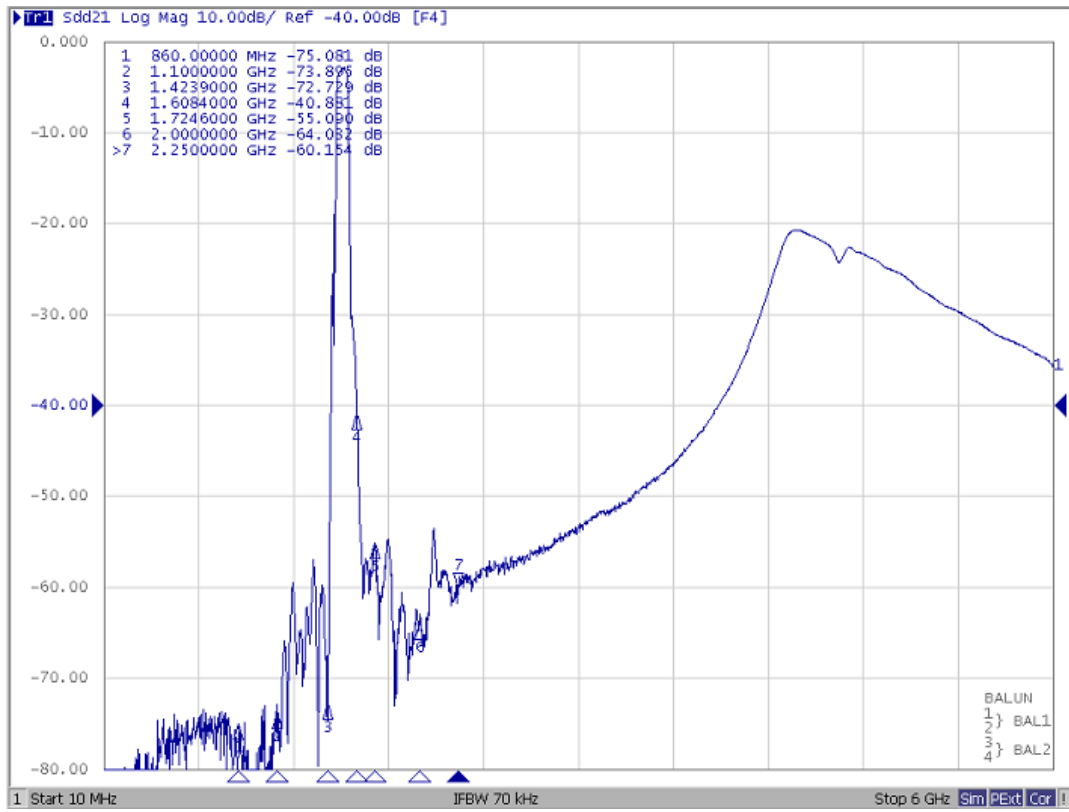
Model: TA1445A
Rev No: 1

F. FREQUENCY CHARACTERISTICS:



SAW Filter 1516.0MHz
Part No: MP04872

Model: TA1445A
Rev No: 1

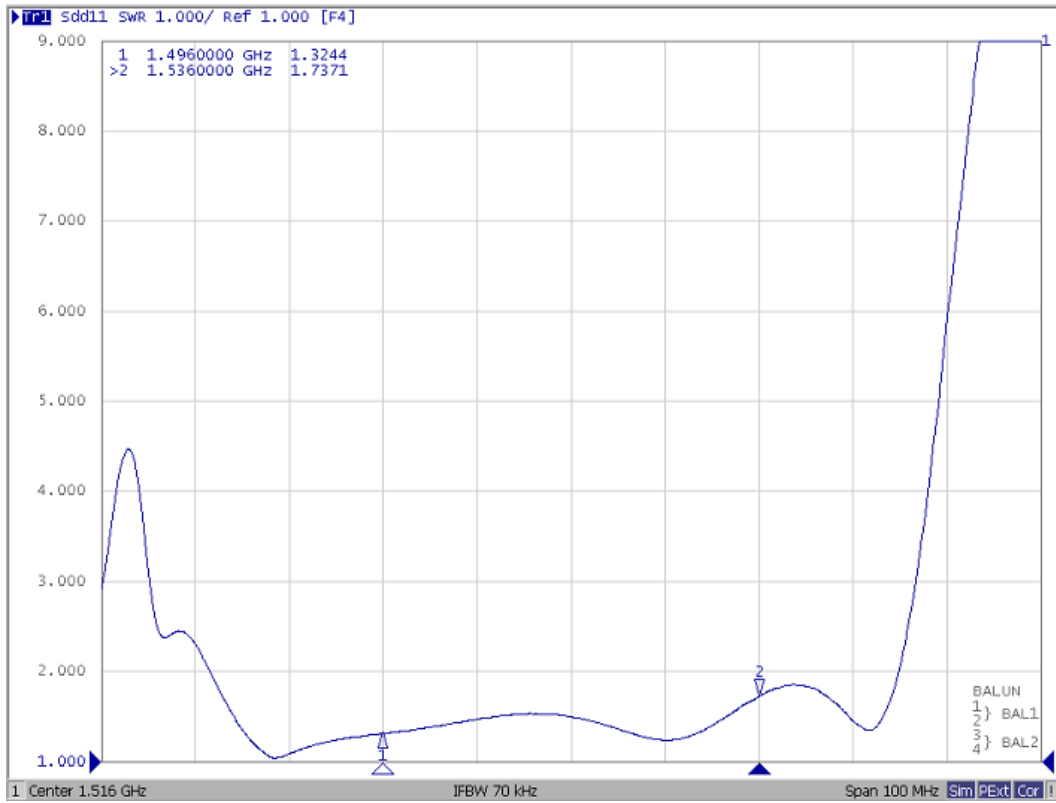


SAW Filter 1516.0MHz
Part No: MP04872

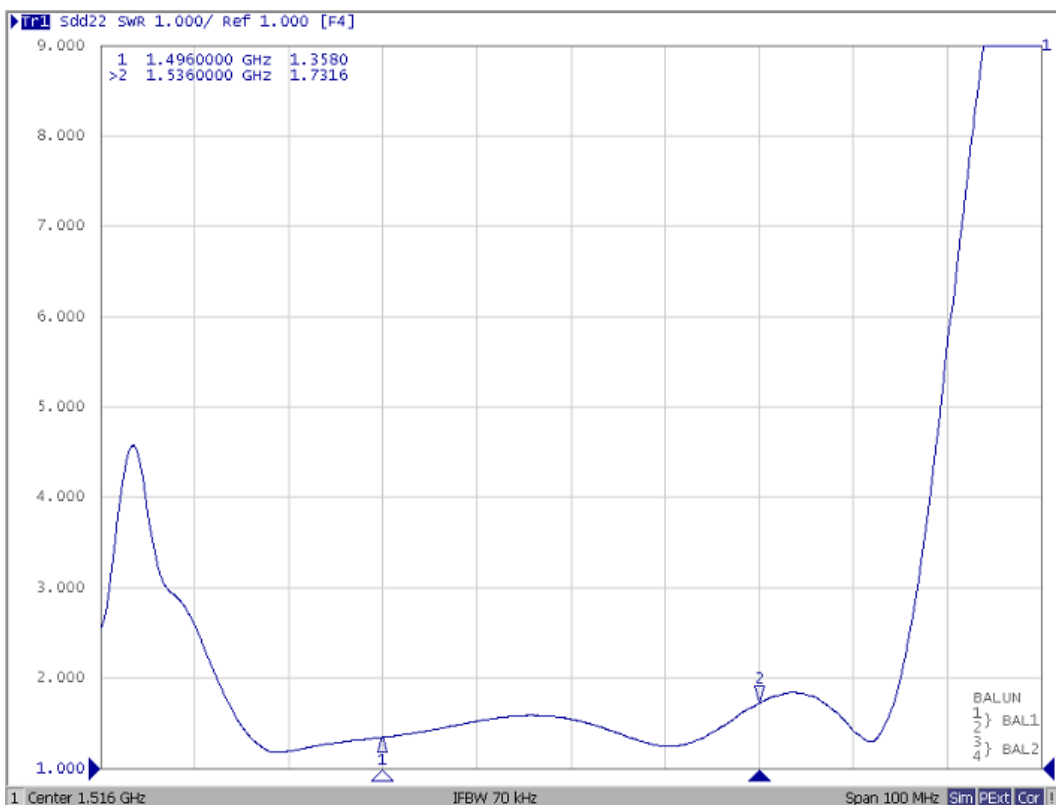
Model: TA1445A
Rev No: 1

Reflection Functions

S11



S22

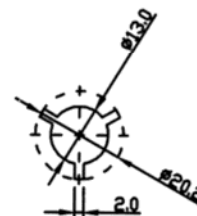
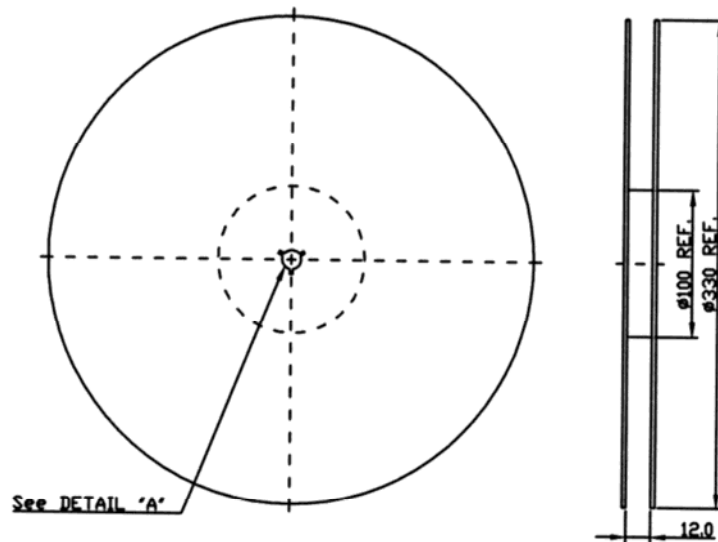


SAW Filter 1516.0MHz
Part No: MP04872

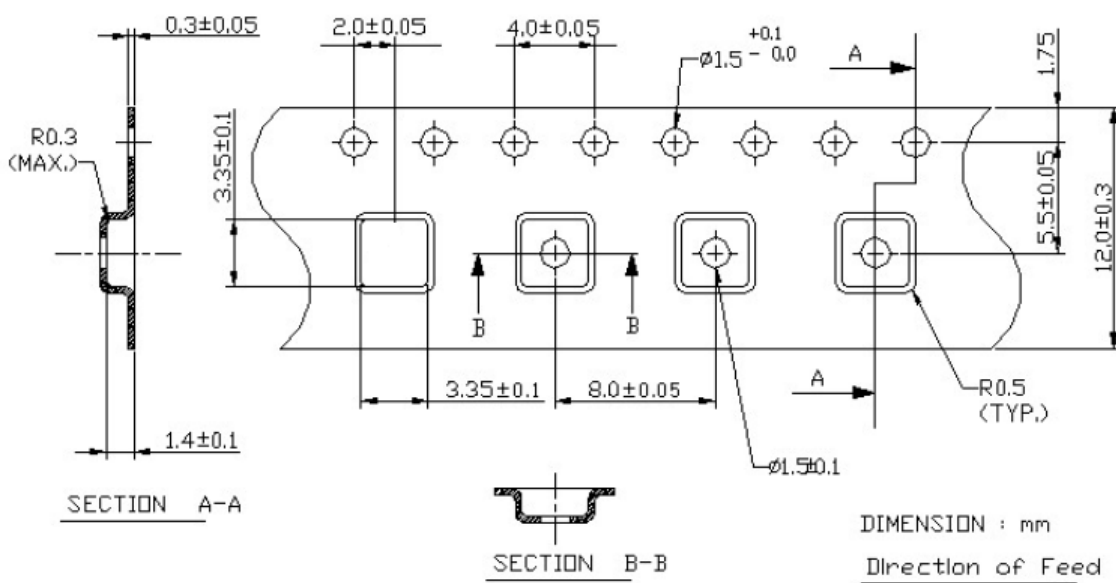
Model: TA1445A
Rev No: 1

G. PACKING:

1. Reel Dimension



2. Tape Dimension



SAW Filter 1516.0MHz
Part No: MP04872

Model: TA1445A
Rev No: 1

H. RECOMMENDED REFLOW PROFILE:

