

**SAW Filter 781.0MHz**  
**Part No: MP05283**

**Model: TA1298A**  
**Rev No: 2**

**A. MAXIMUM RATING:**

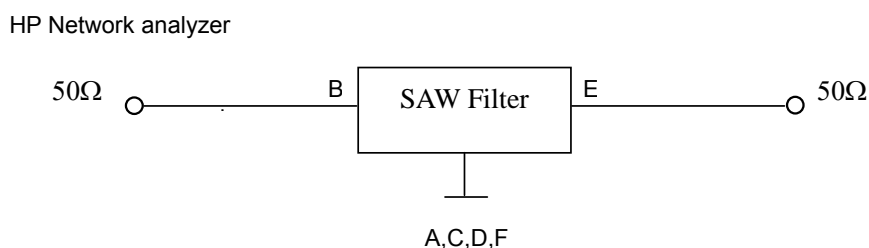
1. Input Power Level: 10dBm
2. DC voltage: 5V
3. Operating Temperature: -30°C to 60°C
4. Storage Temperature: -30°C to +85°C

**B. CHARACTERISTICS:**

Item	Unit	Min.	Typ.	Max.
Center frequency Fc MHz		-	781	-
3dB Bandwidth MHz	dB	24	33	-
Amplitude ripple 769 ~ 793MHz	dB	-	1.4	1.7
Insertion loss 769 ~ 793MHz	dB	-	2.4	3.0
Group Delay variation within 769 ~ 793MHz	ns	-	25	200
Attenuation (reference from 0dB)				
0.3 ~ 706MHz	dB	40	52	-
706 ~ 755MHz	dB	10	22	-
807 ~ 871 MHz	dB	10	20	-
871 ~ 900MHz	dB	40	53	-
900 ~ 1205MHz	dB	45	52	-
Source impedance Z <sub>S</sub>	Ω	-	50	-
Load impedance Z <sub>L</sub>	Ω	-	50	-

Note 1. No matching network required for operation at 50Ω

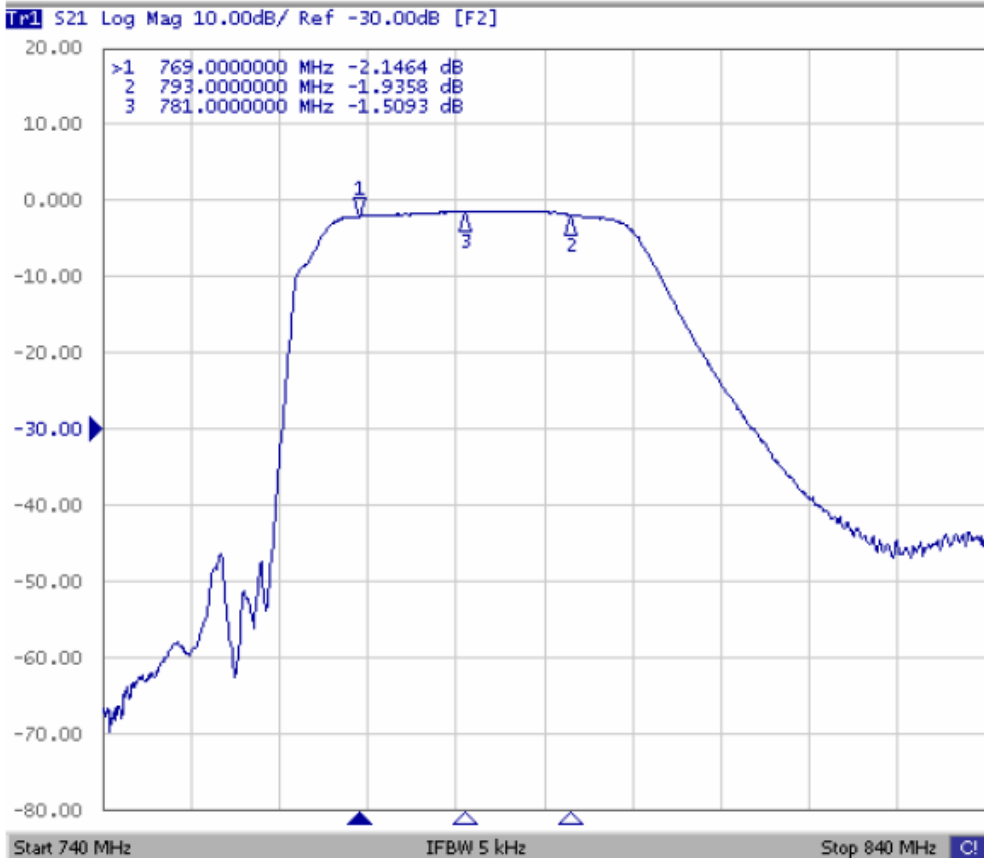
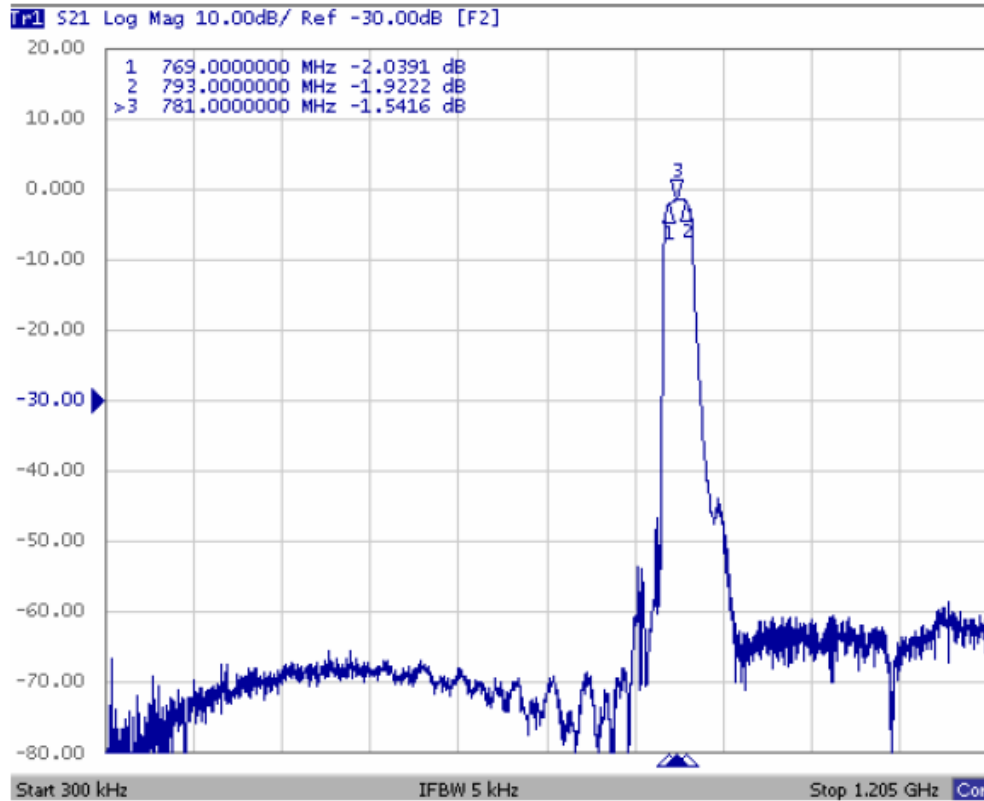
**C. MEASUREMENT CIRCUIT:**



**SAW Filter 781.0MHz**  
**Part No: MP05283**

**Model: TA1298A**  
**Rev No: 2**

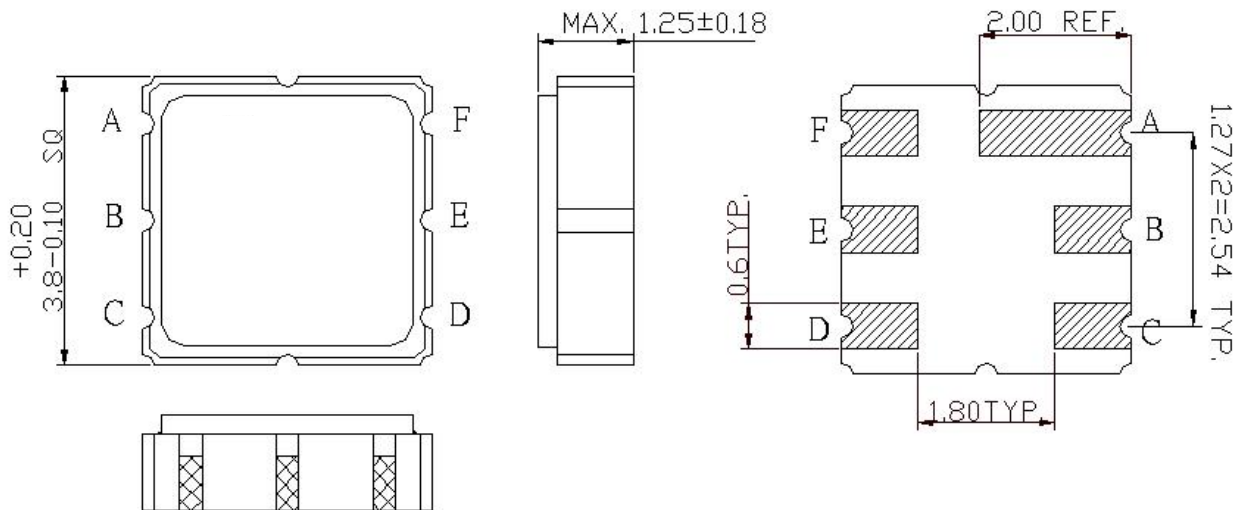
**D. FREQUENCY CHARACTERISTICS:**



**SAW Filter 781.0MHz**  
**Part No: MP05283**

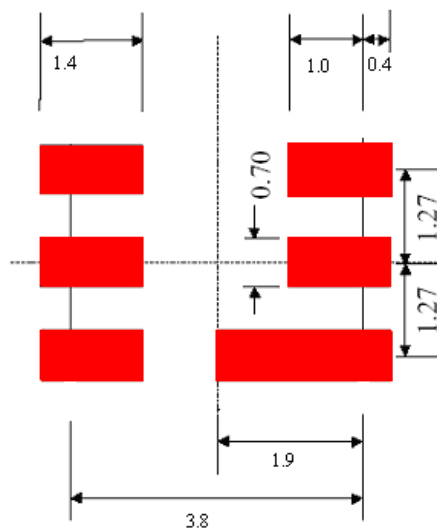
**Model: TA1298A**  
**Rev No: 2**

**E. OUTLINE DRAWING:**



B: Input  
 E: Output  
 A, C, D, F: Ground  
 Unit: mm

**F. PCB FOOTPRINT:**

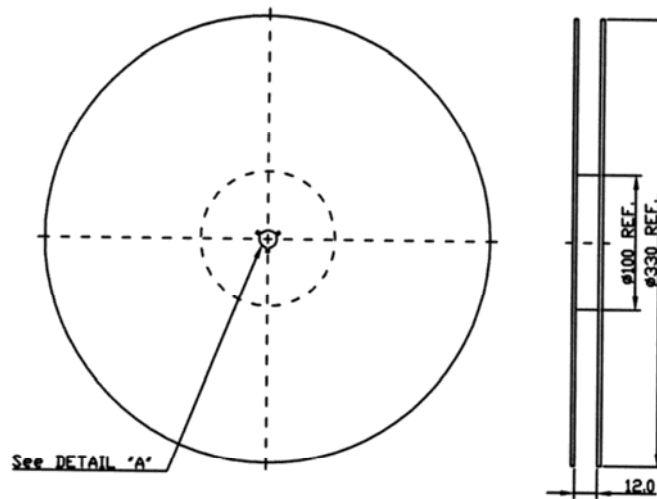


**SAW Filter 781.0MHz**  
**Part No: MP05283**

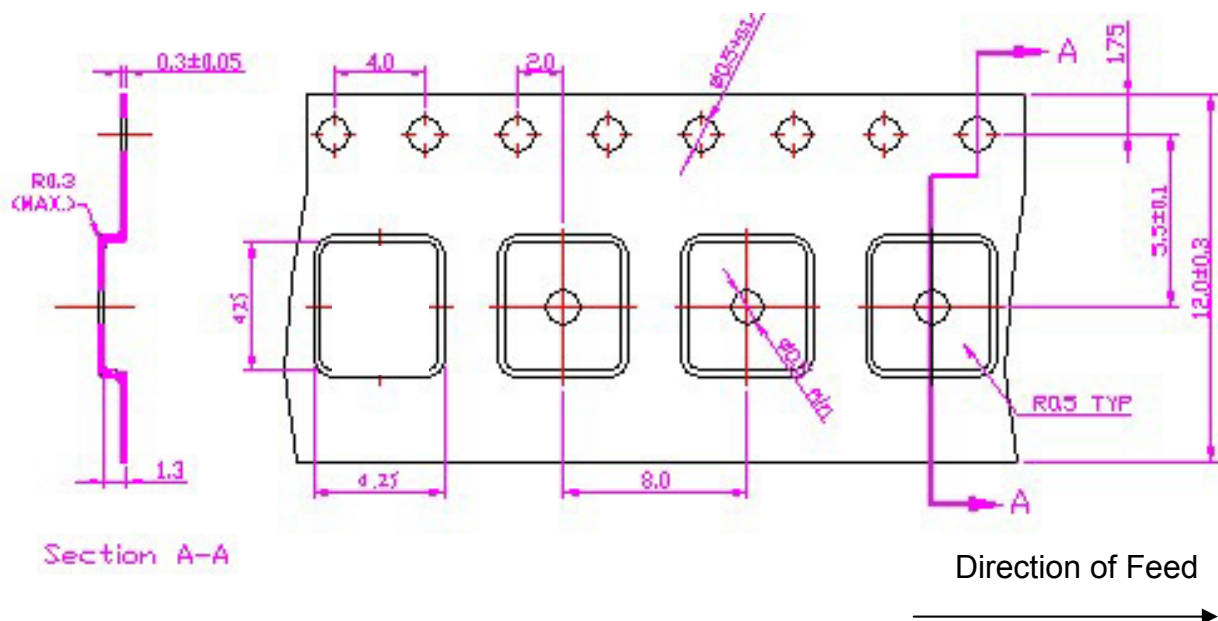
**Model: TA1298A**  
**Rev No: 2**

**G. PACKING:**

1. Reel Dimension



2. Tape Dimension



**SAW Filter 781.0MHz**  
**Part No: MP05283**

**Model: TA1298A**  
**Rev No: 2**

**H. RECOMMENDED REFLOW PROFILE:**

