

SAW Filter: 240.0MHz
Part No: MP05570

Model: TB0668A
Rev No: 2

A. MAXIMUM RATING:

Electrostatic Sensitive Device (ESD)

1. Operating Temperature: -40°C to 85°C
2. Storage Temperature: -40°C to 85°C
3. Input Power: 20dBm

B. ELECTRICAL CHARACTERISTICS:

Ambient Temperature: 25°C

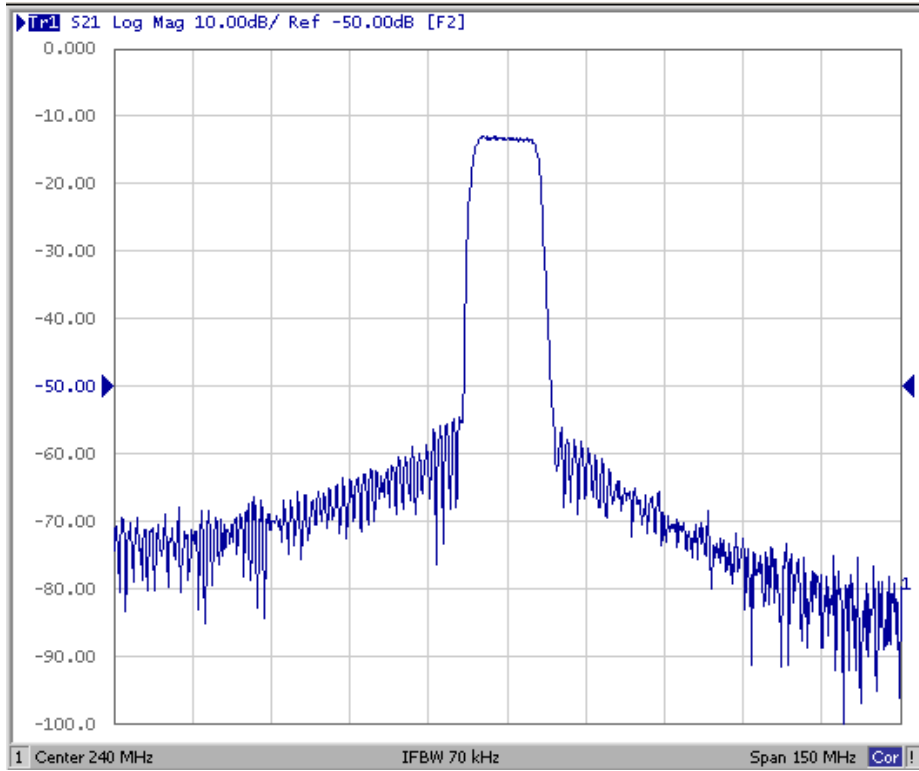
Characteristics	Value			Note
	Min.	Typ.	Max.	
Center frequency Fc MHz	239.5	240	240.5	
Minimum Insertion loss IL dB	-	13.0	14	
1dB Bandwidth MHz	10.5	10.8	-	
3dB Bandwidth MHz		12.2	13.3	
40dB Bandwidth MHz	-	17.3	20.0	
Passband Ripple at any 200kHz within 11MHz dB	-	0.6	1.0	
Group delay ripple (234.5 ~ 245.5MHz) nsec	-	85	200	
Temperature Coefficient ppm/°C	-	-23	-	
Relative Rejection (Reference to Minimum Insertion loss)				
100 ~ 223MHz dB	40	48	-	
257 ~ 500MHz dB	42.5	48	-	

SAW Filter: 240.0MHz
Part No: MP05570

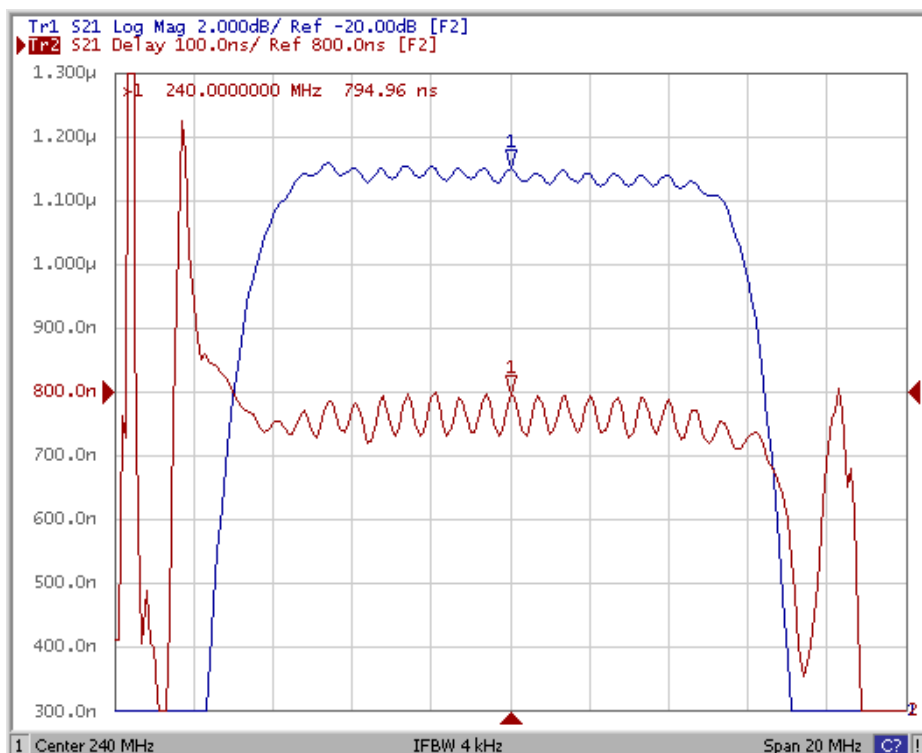
Model: TB0668A
Rev No: 2

C. FREQUENCY CHARACTERISTICS:

1. S21 Response



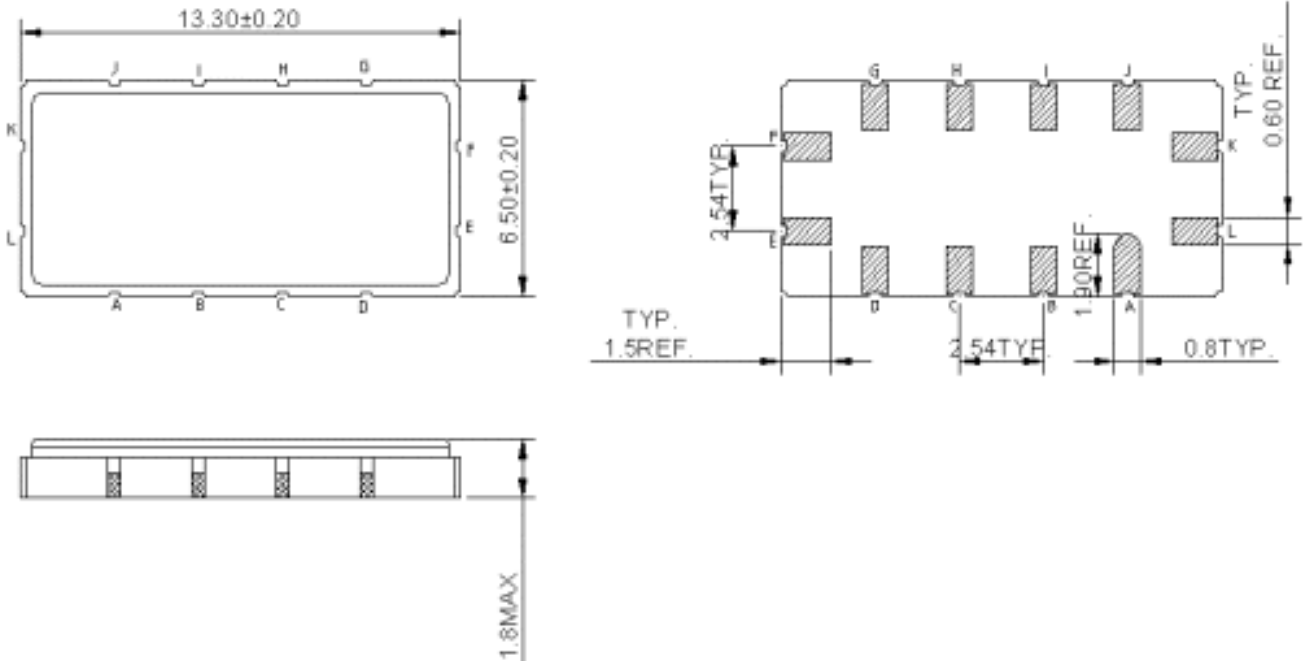
2. Passband Response



SAW Filter: 240.0MHz
Part No: MP05570

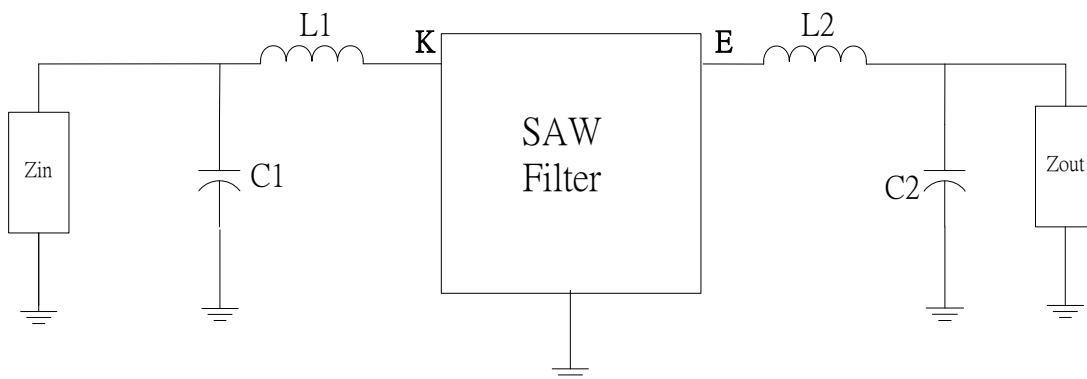
Model: TB0668A
Rev No: 2

D. OUTLINE DRAWING:



- K: Input
- E: Output
- L: Balance Input or Ground
- F: Balance Output or Ground
- A, B, C, D, G, H, I, J: To be Ground

E. MATCHING CIRCUIT CONFIGURATION:



Input: L1 = 27nH; C1 = 27pF
 Output: L2 = 27nH; C2 = 29pF

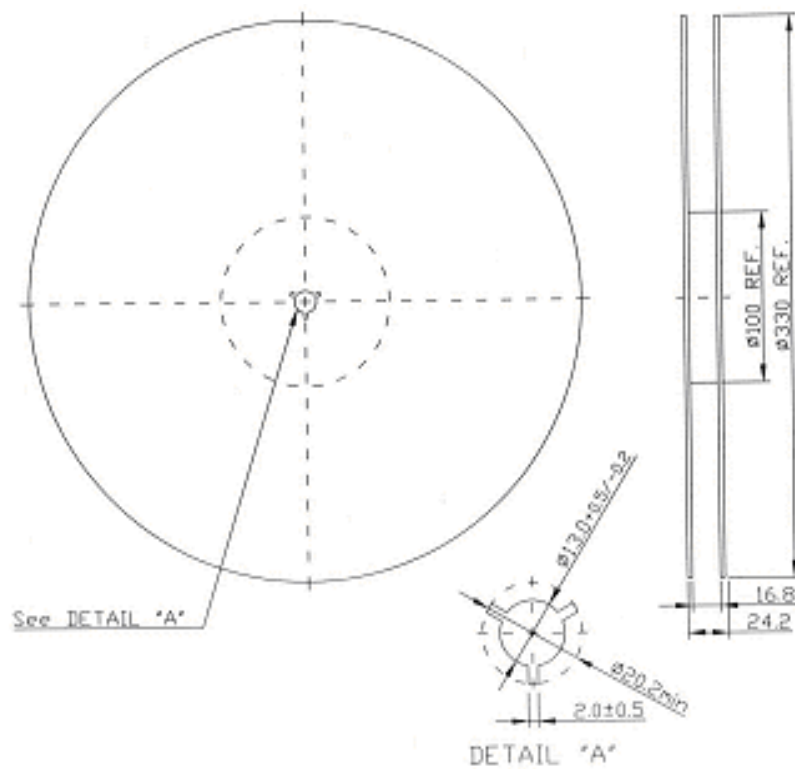
SAW Filter: 240.0MHz
Part No: MP05570

Model: TB0668A
Rev No: 2

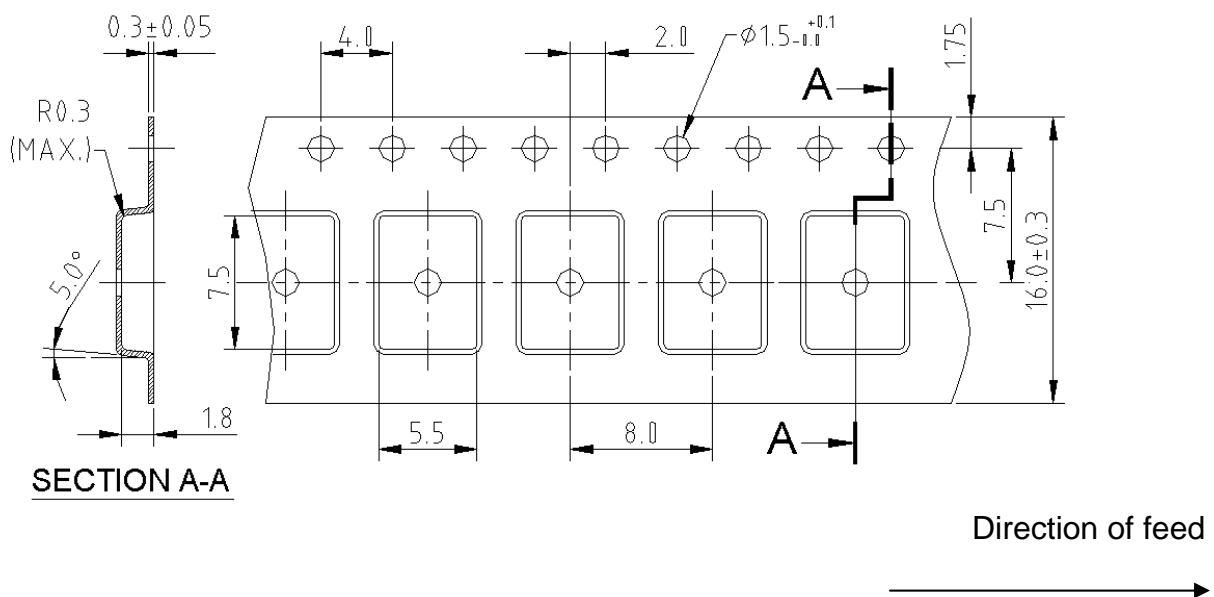
F. PACKING:

1. Reel Dimension

(Please refer to FR-75D10 for packing quantity)



2. Tape Dimension



SAW Filter: 240.0MHz
Part No: MP05570

Model: TB0668A
Rev No: 2

H. RECOMMENDED REFLOW PROFILE:

