

SAW Filter 483.0MHz
Part No: MP05750

Model: TA1351A
Rev. No: 2

A. MAXIMUM RATING:

Electrostatic Sensitive Device (ESD)

1. Input Power Level: 10dBm
2. DC voltage: 5V
3. Operating Temperature: -30°C to 60°C
4. Storage Temperature: -40°C to +85°C

B. CHARACTERISTICS:

1. Ambient Temperature: 25°C

Item	Unit	Min.	Typ.	Max.
Center frequency Fc	MHz	-	483	-
Amplitude ripple (471 ~ 495MHz)	dB	-	1.4	1.7
Insertion loss IL (471 ~ 495MHz)	dB	-	2.4	3.0
Group Delay GD (471 ~ 495MHz)	ns	-	30	200
Bandwidth @ -3dB		24	31.9	-
Attenuation (reference from 0dB)				
0.3 ~ 435MHz	dB	35	39	-
435 ~ 455MHz	dB	10	17	-
510 ~ 540MHz	dB	10	17	-
540 ~ 785MHz	dB	40	47	-
785 ~ 1000MHz	dB	30	35	-
Source impedance Z _s	Ω	-	50	-
Load impedance Z _L	Ω	-	50	-

Note: No matching network required for operation at 50Ω

SAW Filter 483.0MHz
Part No: MP05750

Model: TA1351A
Rev. No: 2

2. Ambient Temperature: -30°C ~ 60°C

Item	Unit	Min.	Typ.	Max.
Center frequency Fc	MHz	-	483	-
Amplitude ripple (471 ~ 495MHz)	dB	-	1.4	2.0
Insertion loss IL (471 ~ 495MHz)	dB	-	2.4	4.0
Group Delay, GD (471 ~ 495MHz)	ns	-	30	200
Bandwidth @ -3dB		24	31.9	-
Attenuation (reference from 0dB)				
0.3 ~ 435MHz	dB	35	39	-
435 ~ 455MHz	dB	10	17	-
510 ~ 540MHz	dB	10	17	-
540 ~ 785MHz	dB	40	47	-
785 ~ 1000MHz	dB	30	35	-
Source impedance Z _S	Ω	-	50	-
Load impedance Z _L	Ω	-	50	-

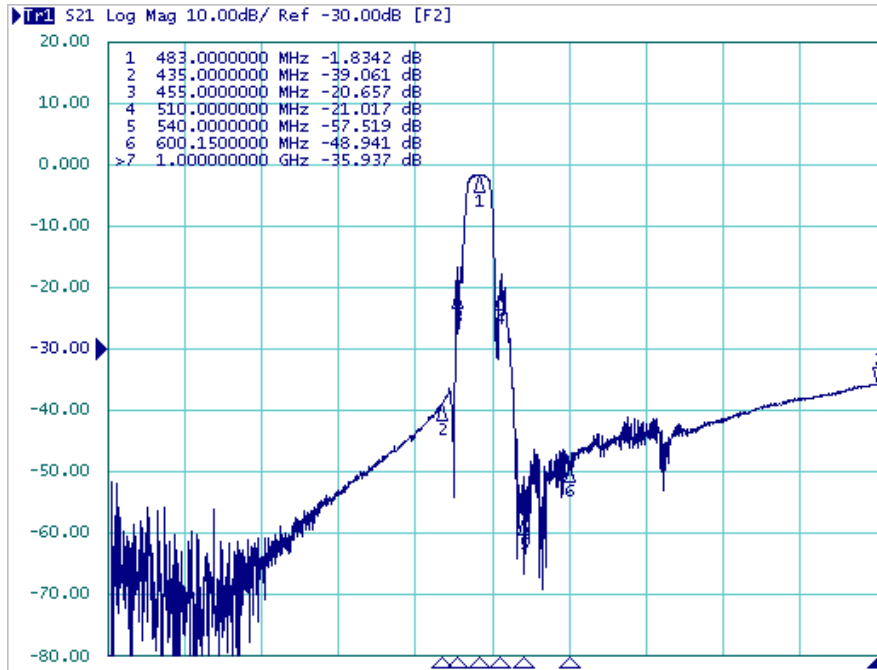
Note: No matching network required for operation at 50Ω

SAW Filter 483.0MHz
Part No: MP05750

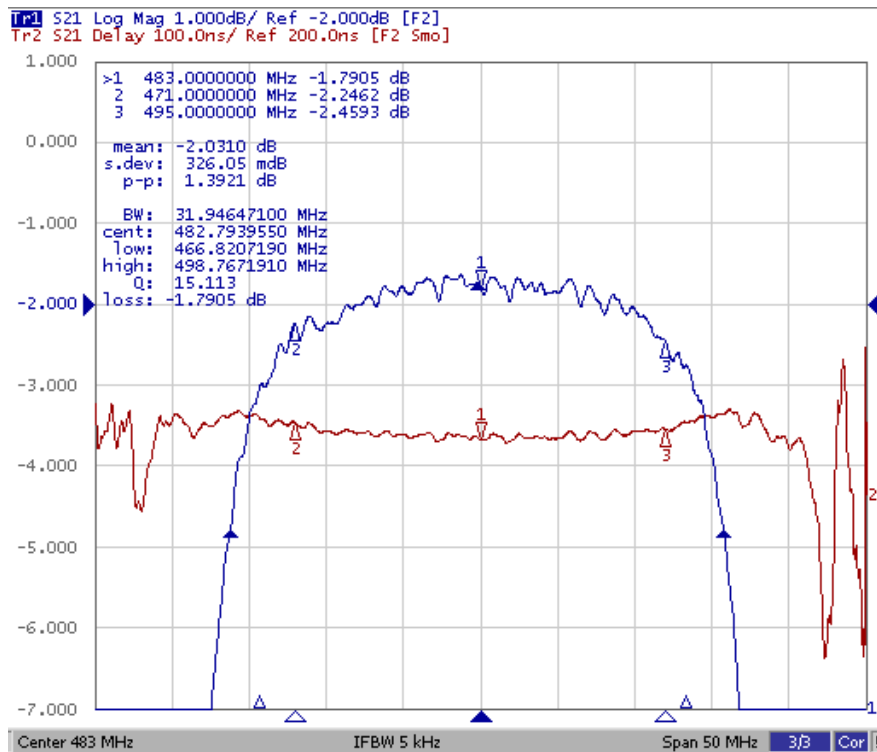
Model: TA1351A
Rev. No: 2

C. FREQUENCY CHARACTERISTICS:

1. Wideband



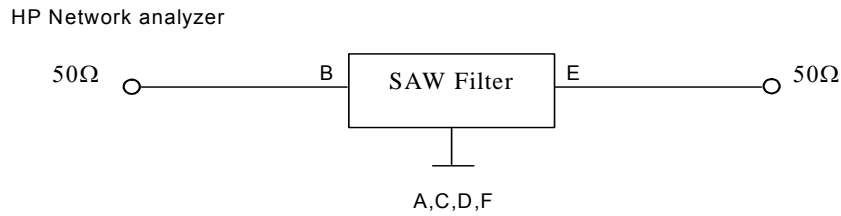
2. Passband



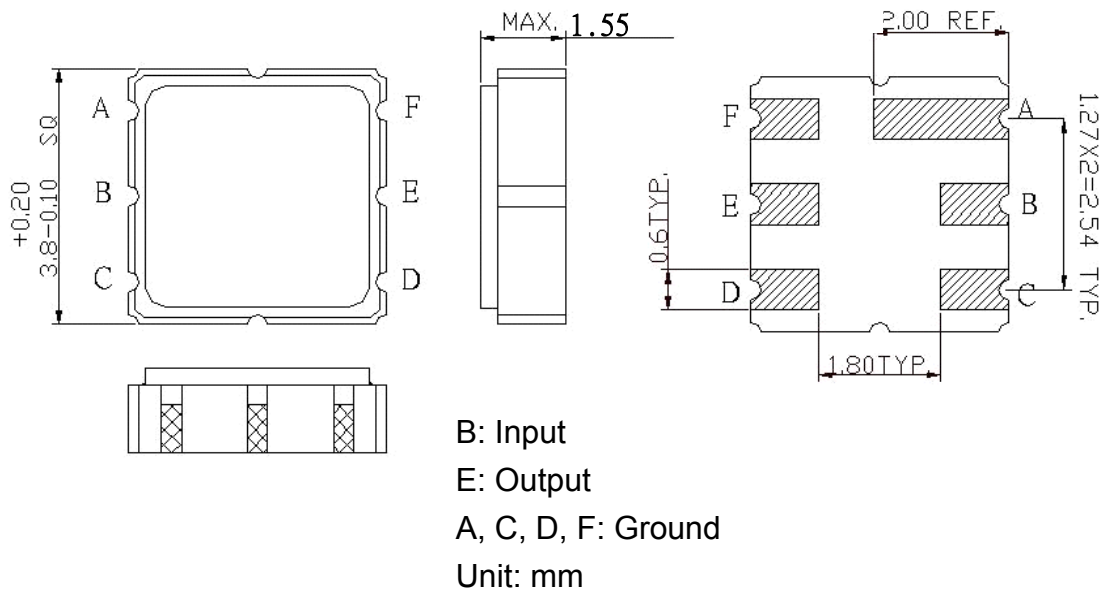
SAW Filter 483.0MHz
Part No: MP05750

Model: TA1351A
Rev. No: 2

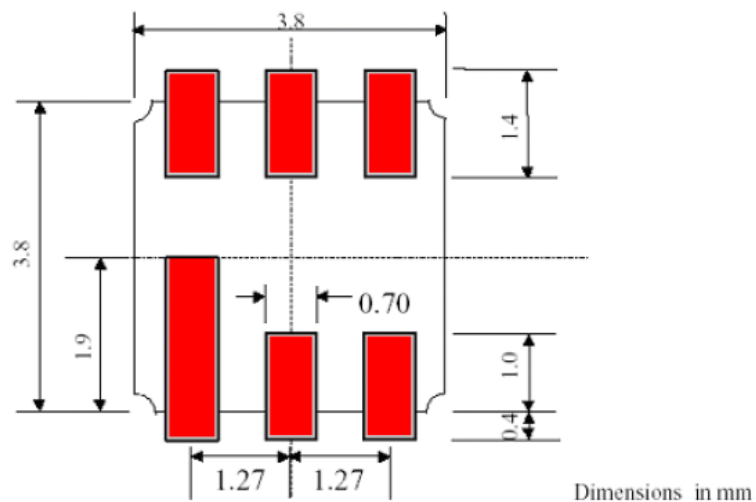
D. MEASUREMENT CIRCUIT:



E. OUTLINE DRAWING:



F. PCB FOOTPRINT:

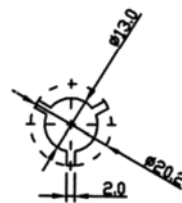
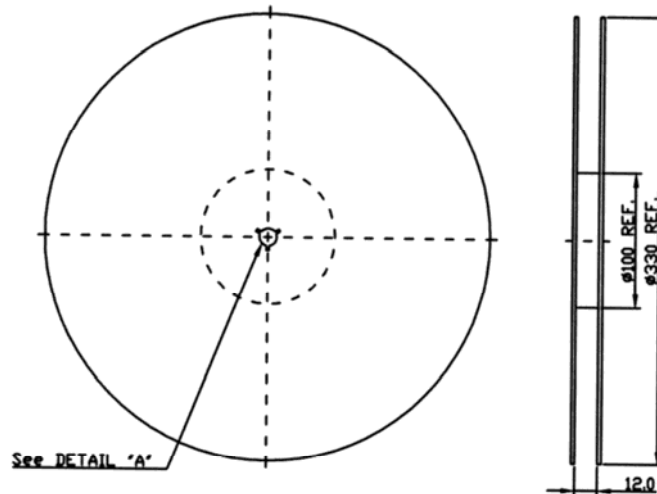


SAW Filter 483.0MHz
Part No: MP05750

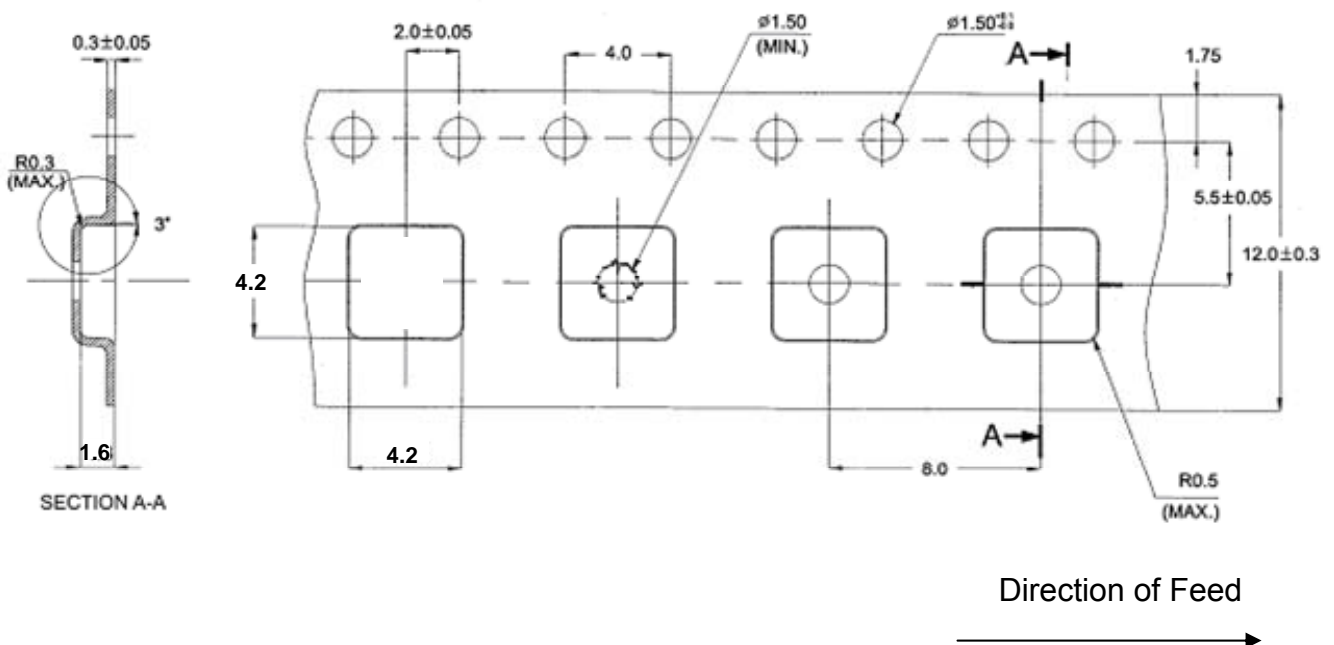
Model: TA1351A
Rev. No: 2

G. PACKING:

1. Reel Dimension (Please refer to FR-75D10 for packing quantity)



2. Tape Dimension



SAW Filter 483.0MHz
Part No: MP05750

Model: TA1351A
Rev. No: 2

H. RECOMMENDED REFLOW PROFILE:

