

SAW Filter 400.0MHz

Model: TB0910A

Part No: MP05902

Rev No: 1

A. MAXIMUM RATING:

1. Operating temperature range: -30°C to 85°C
2. Storage temperature range: -40°C to 85°C
3. Input Power Level: 10dBm
4. Maximum DC Voltage: 10V

B. CHARACTERISTICS:

Ambient Temperature: 25°C

Item	Unit	Min.	Typ.	Max.
Center frequency Fc	MHz	-	400	-
Insertion Loss IL	dB	-	13.0	15.5
-3dB bandwidth	MHz	40	46	-
Passband Ripple Fc ± 15MHz	dB	-	0.4	1.0
Attenuation:(Reference level from Min IL)				
DC ~ 320MHz	dB	40	50	
480MHz ~ 700MHz	dB	40	50	
Temperature Coefficient	ppm/°C	-	-94	-
Source Impedance	Ohm	-	50	-
Load Impedance	Ohm	-	50	-

SAW Filter 400.0MHz
Part No: MP05902

Model: TB0910A
Rev No: 1

C. FREQUENCY CHARACTERISTICS:

1. Wide band Response: (span 600MHz)

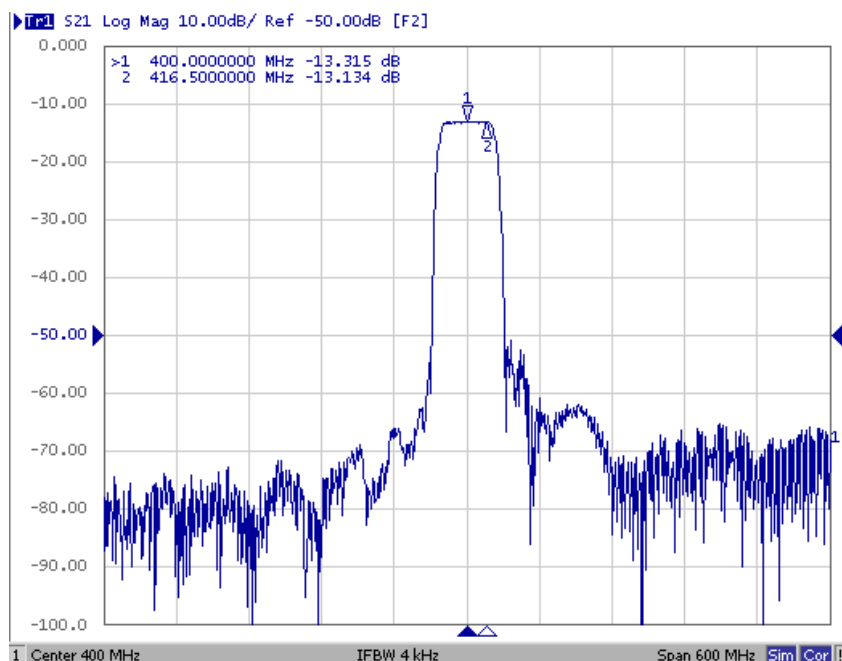


Fig. 1. Horizontal: 60MHz / Div, Vertical: 10dB / Div

2. Pass band Response and Group Time Delay response:

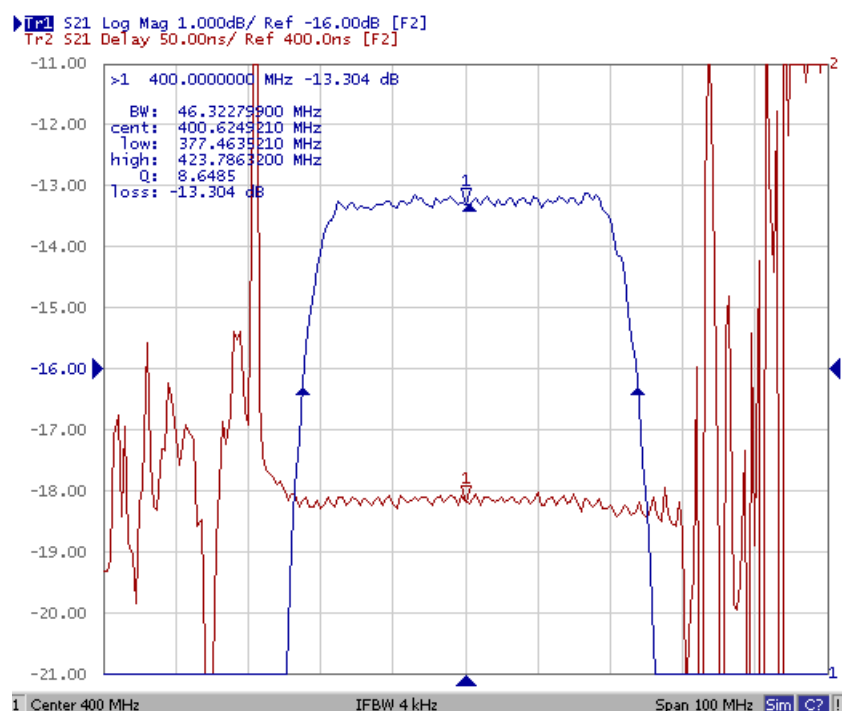
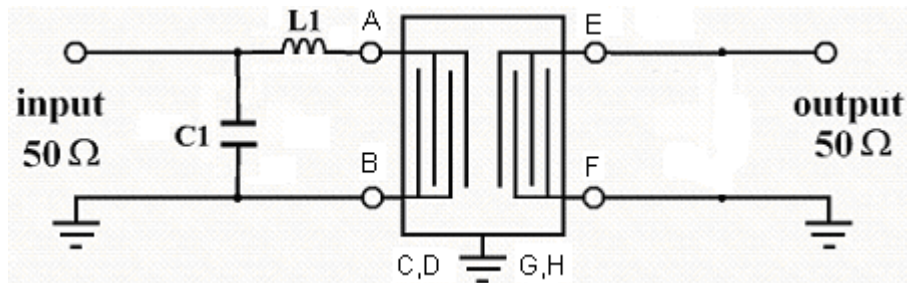


Fig. 2. Horizontal: 8MHz / Div, Vertical: 1dB / Div, Vertical: 50ns / Div

SAW Filter 400.0MHz
Part No: MP05902

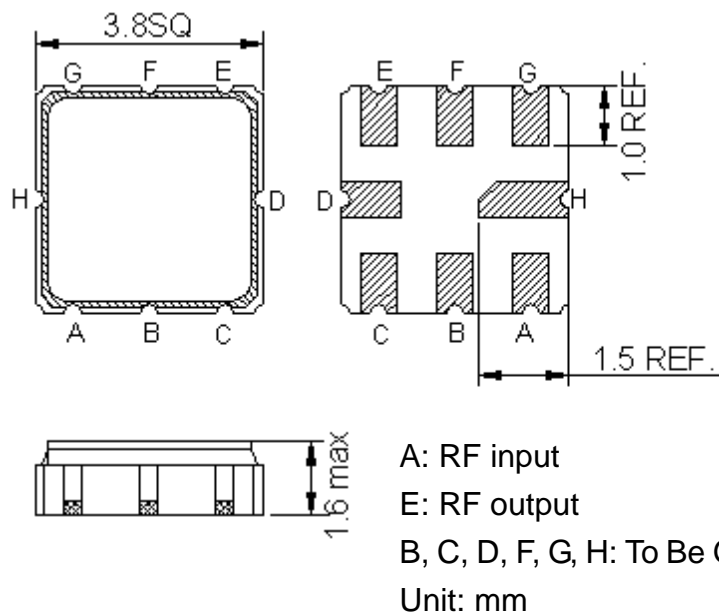
Model: TB0910A
Rev No: 1

D. MATCHING CIRCUIT:

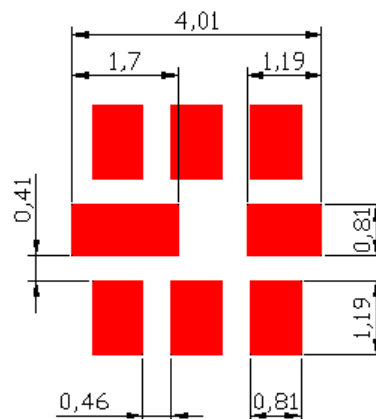


$$L1 = 2.7 \text{ nH} \quad C1 = 9 \text{ pF}$$

E. OUTLINE DRAWING:



F. PCB FOOTPRINT:



SAW Filter 400.0MHz

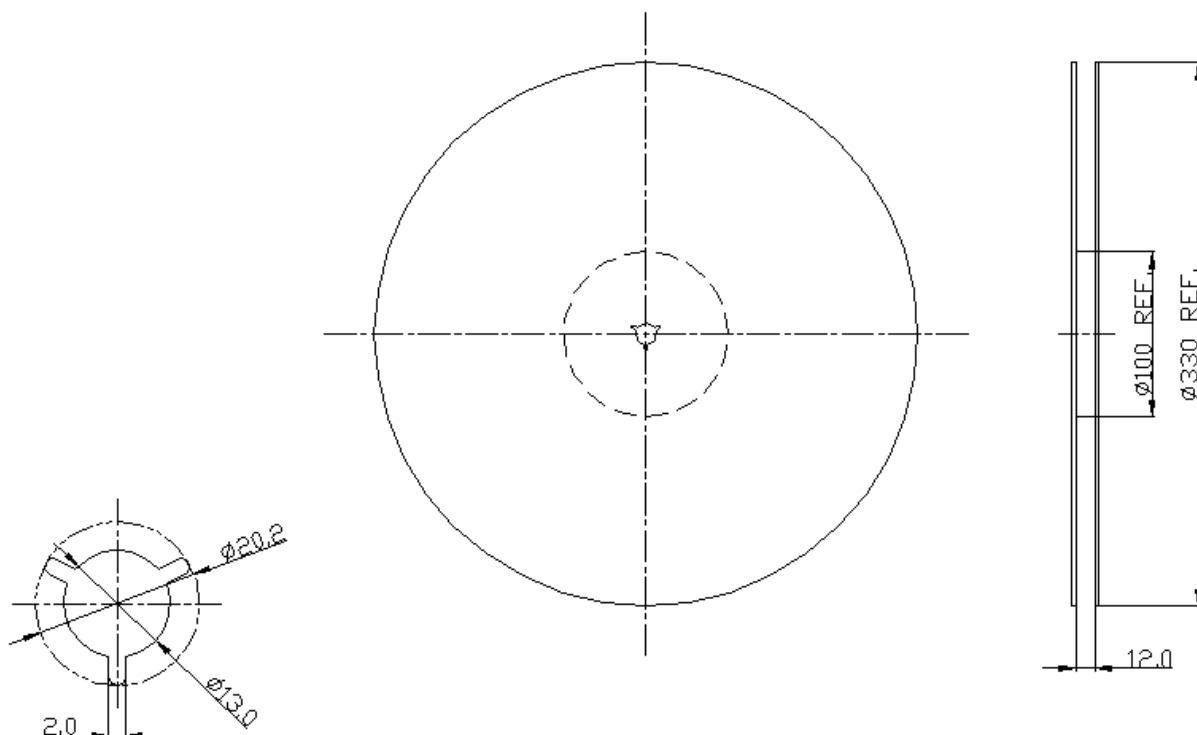
Model: TB0910A

Part No: MP05902

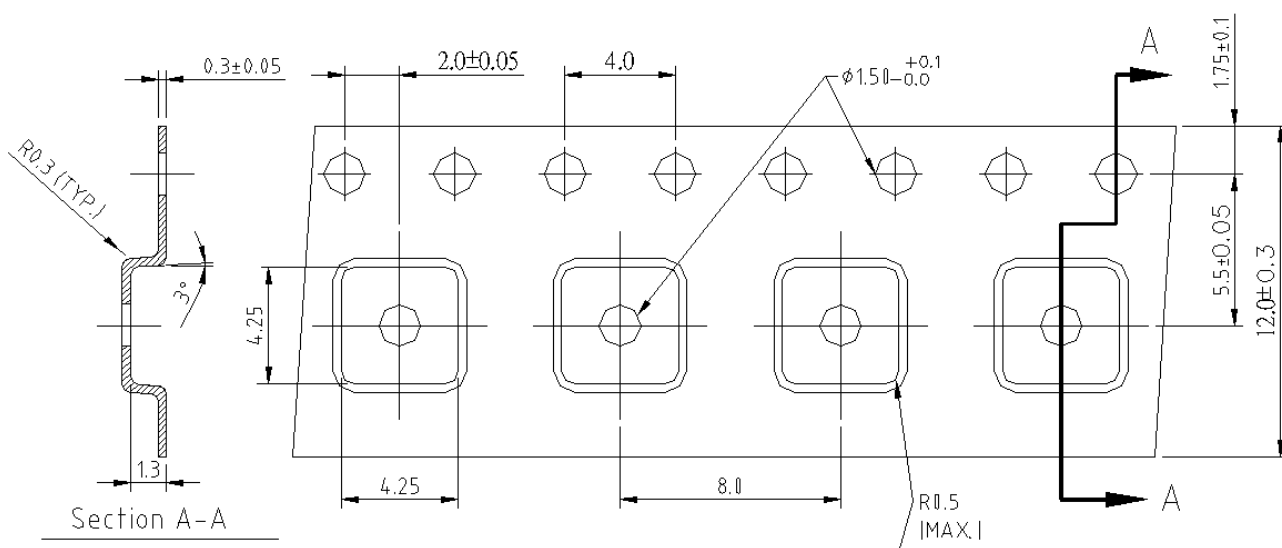
Rev No: 1

G. PACKING:

1. Reel Dimension



2. Tape Dimension



SAW Filter 400.0MHz

Model: TB0910A

Part No: MP05902

Rev No: 1

H. RECOMMENDED REFLOW PROFILE:

