

**SAW Filter 875.0MHz**  
**Part No: MP06158**

**Model: TB0883A**  
**Rev No: 1**

**A. MAXIMUM RATING:**

1. Operating temperature range: -40°C to 85°C
2. Storage temperature range: -40°C to 85°C
3. Input Power Level: 10dBm
4. Maximum DC Voltage: 10V

**B. CHARACTERISTICS:**

Ambient Temperature: 25°C

Characteristics	Min.	Typ.	Max.
Center frequency Fc MHz	-	875	-
Maximum Insertion loss IL dB	-	23.5	25.5
1dB Band Width MHz	10.0	10.7	-
3dB Band Width MHz	-	11.3	-
40dB Band Width MHz		14.1	15.0
Passband Ripple at Fc ± 4.8MHz dB	-	0.8	1.2
Group Delay in Fc ± 4.8MHz nsec	-	60	110
Absolute group Delay usec	-	1.1	-
Attenuation (Reference level from minimum Insertion loss)			
Fc ± 7.5MHz dB	34	42	-
Single Input Impedance Ohm	-	50	-
Single Output Impedance Ohm	-	50	-
Temperature Coefficient ppm/°C <sup>2</sup>	-	-0.036	-

**SAW Filter 875.0MHz**  
**Part No: MP06158**

**Model: TB0883A**  
**Rev No: 1**

**C. FREQUENCY RESPONSES:**

1. Wide band response

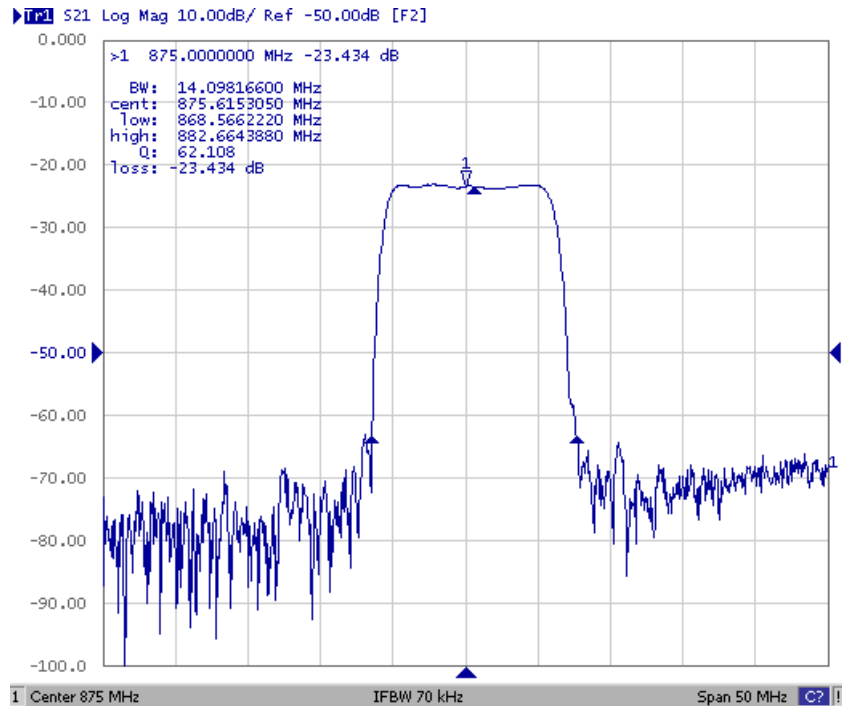


Fig. 1: Horizontal: 5MHz / Div, Vertical: 10dB / Div

2. Pass band & Group Delay response

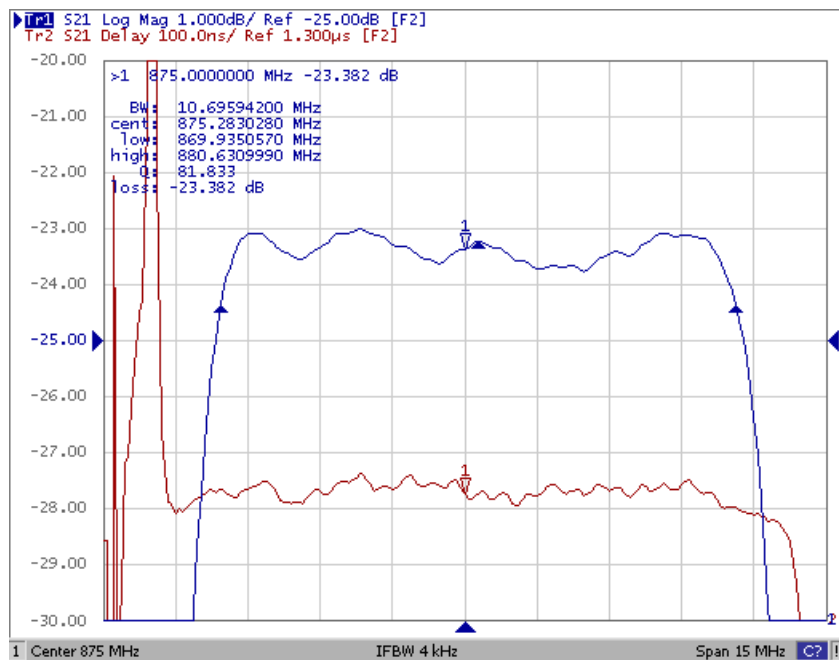
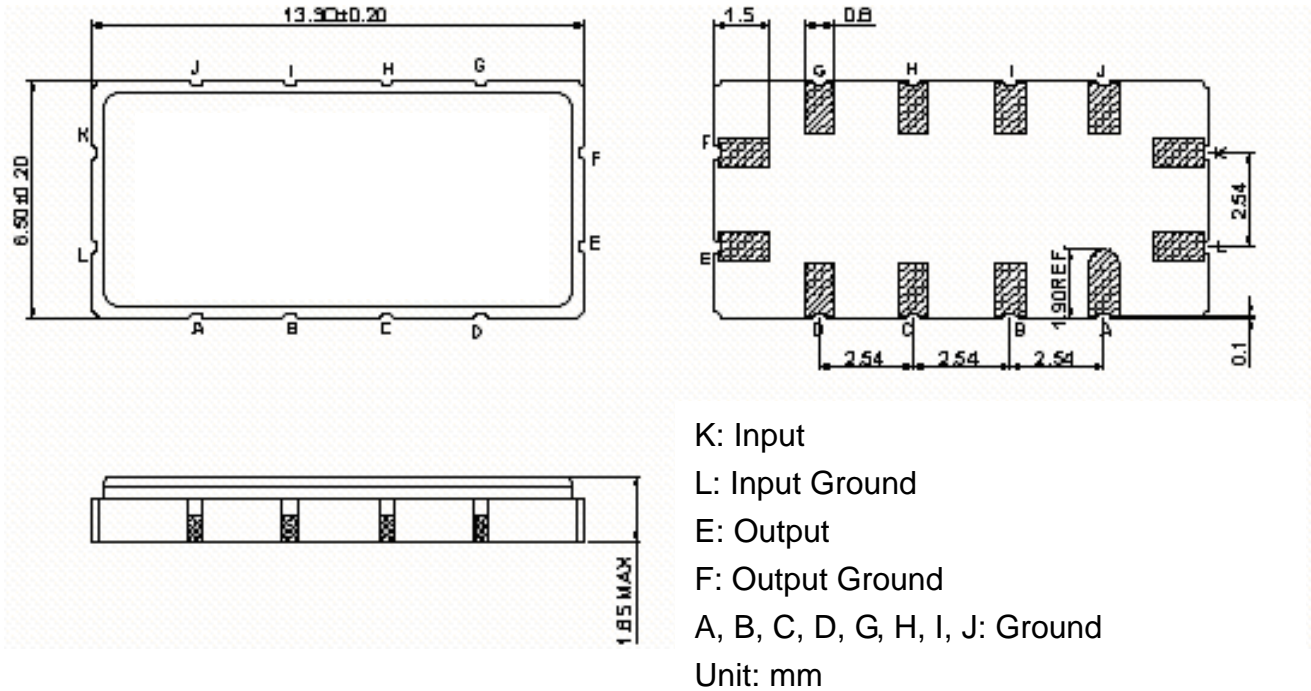


Fig. 2: Horizontal: 1.5MHz / Div, Vertical: 1dB / Div, Vertical: 100ns / Div

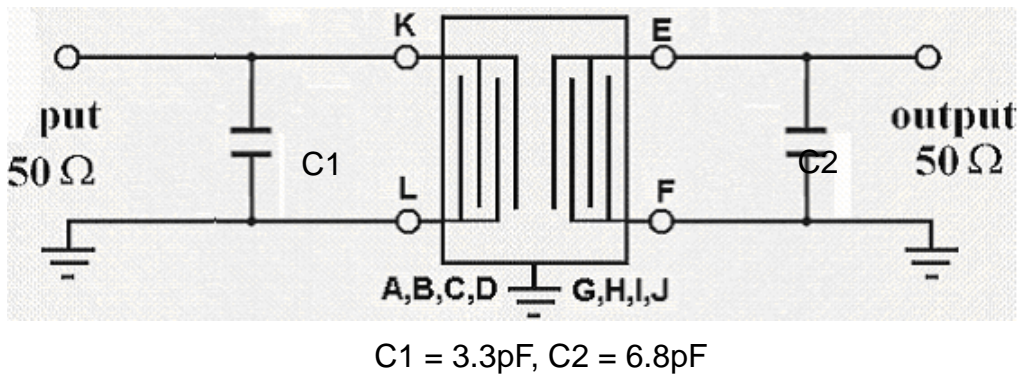
**SAW Filter 875.0MHz**  
**Part No: MP06158**

**Model: TB0883A**  
**Rev No: 1**

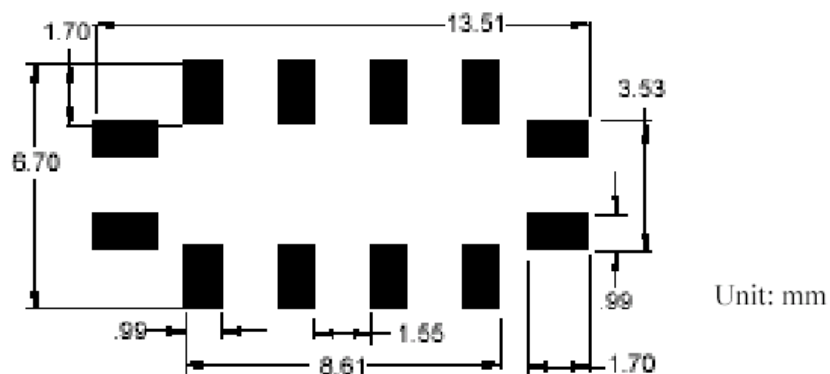
**D. OUTLINE DRAWING:**



**E. MATCHING CIRCUIT:**



**F. PCB FOOTPRINT:**

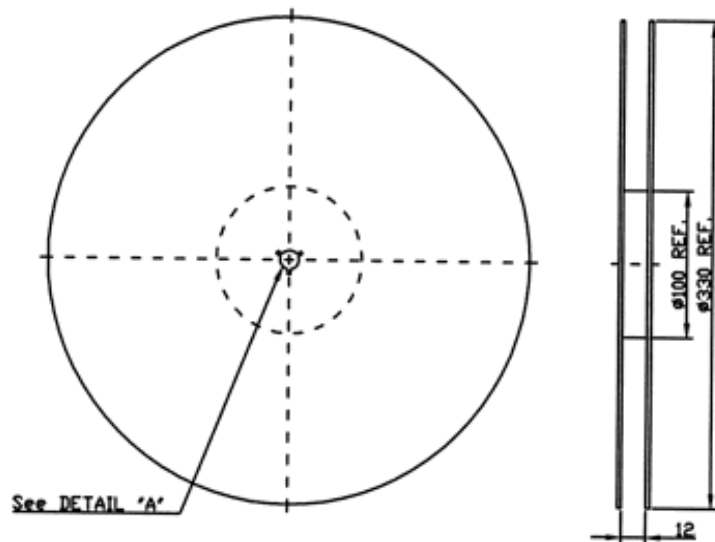


**SAW Filter 875.0MHz**  
**Part No: MP06158**

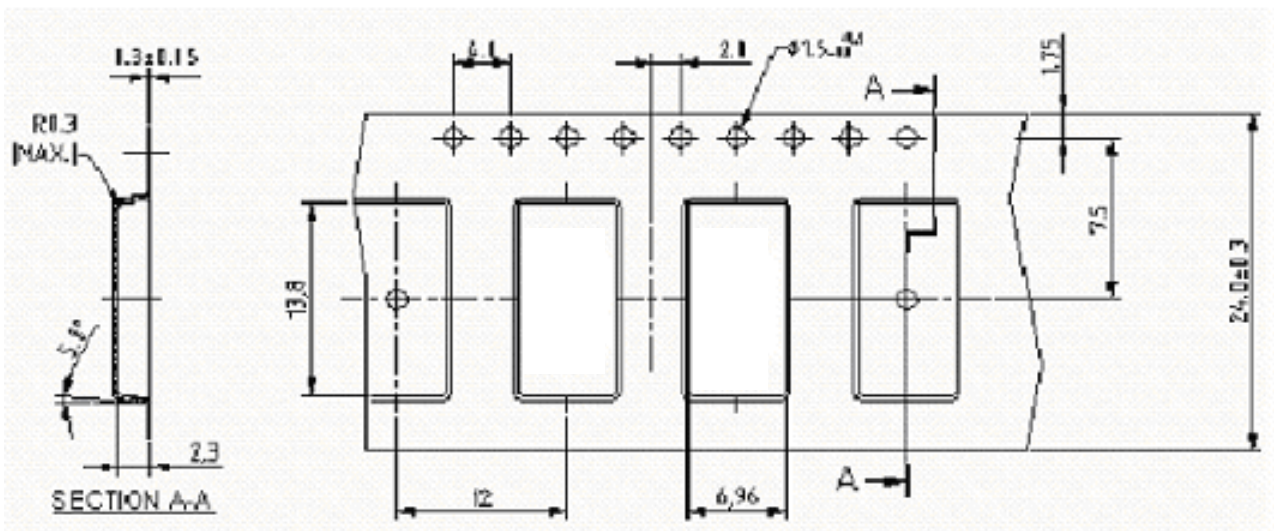
**Model: TB0883A**  
**Rev No: 1**

**G. PACKING:**

1. Reel Dimension



2. Tape Dimension



**SAW Filter 875.0MHz**  
**Part No: MP06158**

**Model: TB0883A**  
**Rev No: 1**

**H. RECOMMENDED REFLOW PROFILE:**

