

**SAW Filter 678.0MHz**

**Model: TA1359A**

**Part No: MP07031**

**Rev No: 1**

**A. MAXIMUM RATING:**

Electrostatic Sensitive Device (ESD)

1. Input Power Level: 10dBm
2. DC voltage: 5V
3. Operating Temperature: -30°C to 60°C
4. Storage Temperature: -40°C to +85°C

**B. CHARACTERISTICS:**

Item	Unit	Min.	Typ.	Max.
Center frequency Fc	MHz	-	678	-
Amplitude ripple (666 ~ 690MHz)	dB	-	1.2	1.7
Insertion loss, IL (666 ~ 690MHz)	dB	-	2.5	3.0
Group Delay, GD (666 ~ 690MHz)	ns	-	72	200
Bandwidth @ -3dB		24	43	-
Attenuation (reference from 0dB)				
0.3 ~ 630MHz	dB	30	34	-
630 ~ 645MHz	dB	10	18	-
710 ~ 750MHz	dB	10	29	-
750 ~ 770MHz	dB	30	54	-
770 ~ 1008MHz	dB	35	39	-
1008 ~ 1150MHz	dB	35	38	-
Source impedance, Z <sub>s</sub>	Ω	-	50	-
Load impedance, Z <sub>L</sub>	Ω	-	50	-

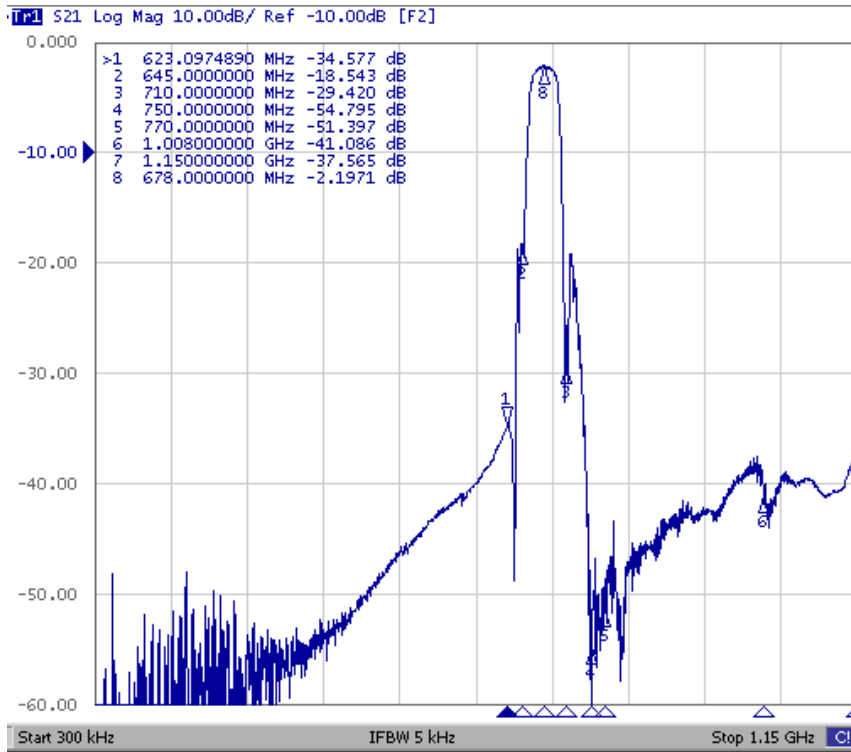
Note: No matching network required for operation at 50Ω

**SAW Filter 678.0MHz**  
**Part No: MP07031**

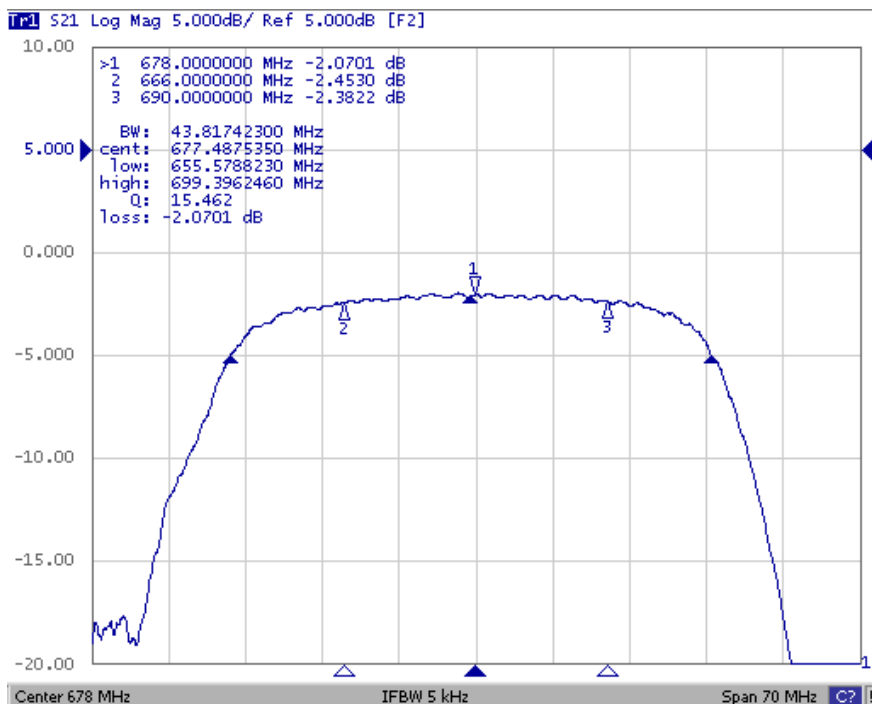
**Model: TA1359A**  
**Rev No: 1**

**C. FREQUENCY CHARACTERISTICS:**

1. Wideband



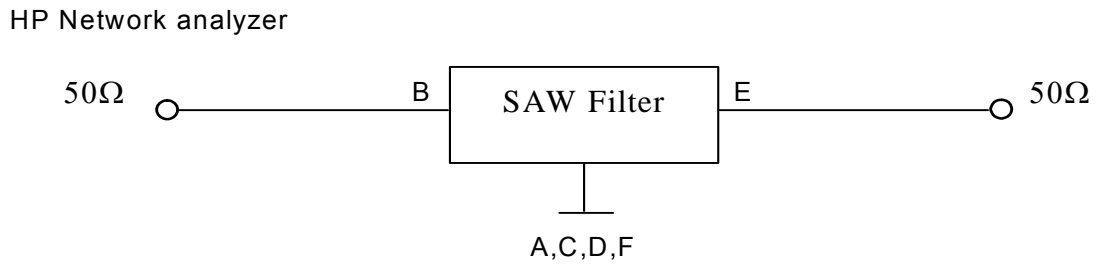
2. Passband



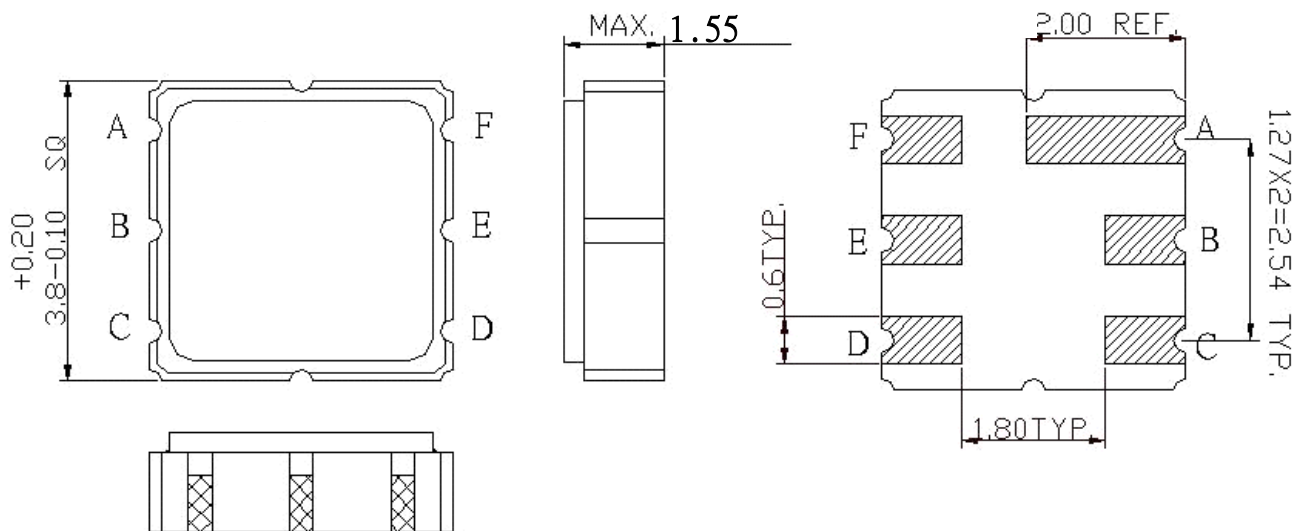
**SAW Filter 678.0MHz**  
**Part No: MP07031**

**Model: TA1359A**  
**Rev No: 1**

**D. MEASUREMENT CIRCUIT:**



**E. OUTLINE DRAWING:**



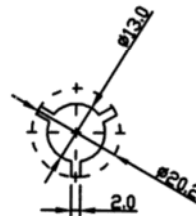
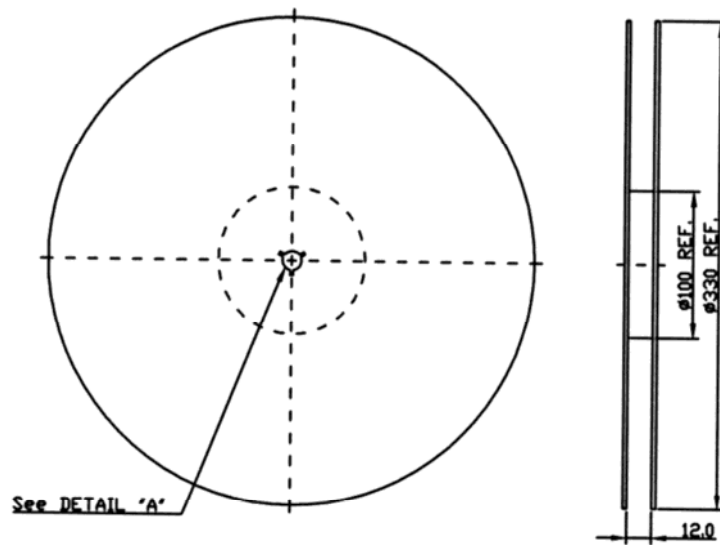
B: Input  
 E: Output  
 A, C, D, F: Ground  
 Unit: mm

**SAW Filter 678.0MHz**  
**Part No: MP07031**

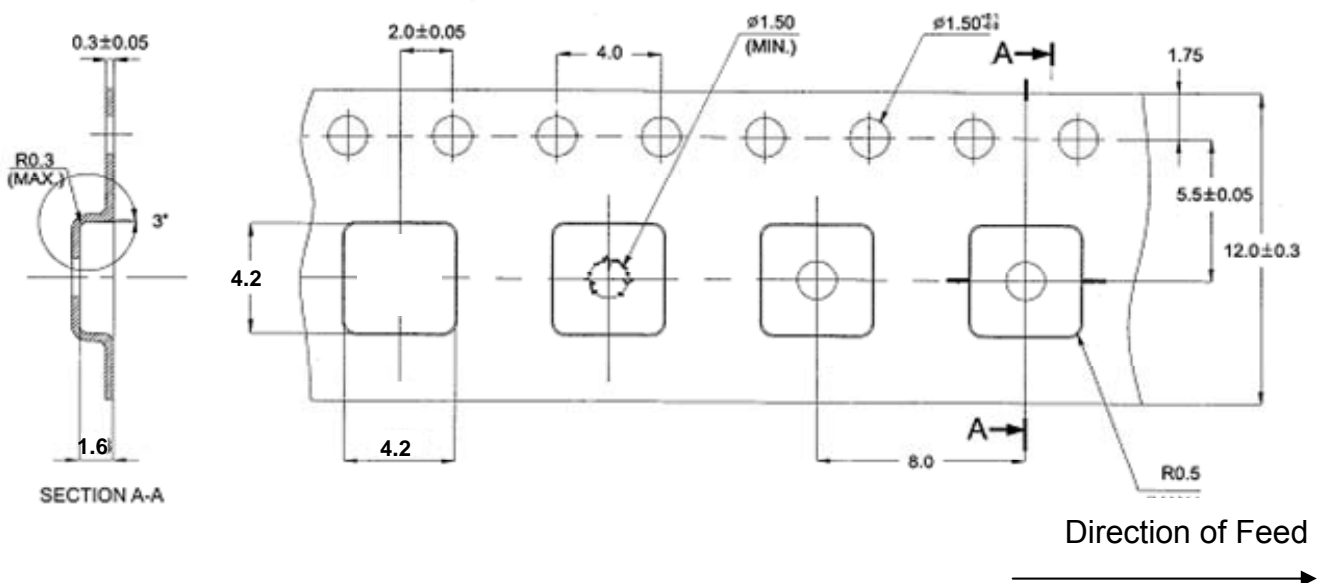
**Model: TA1359A**  
**Rev No: 1**

**F. PACKING:**

1. Reel Dimension



2. Tape Dimension



**SAW Filter 678.0MHz**  
**Part No: MP07031**

**Model: TA1359A**  
**Rev No: 1**

**G. RECOMMENDED REFLOW PROFILE:**

