

SAW Filter 355.0MHz
Part No: MP02584

Model: TB0673A
Rev No: 2

A. MAXIMUM RATING:

Electrostatic Sensitive Device (ESD)

1. Input Power Level: 10dBm
2. DC Voltage: 10V
3. Operating Temperature: -40°C to +85°C
4. Storage Temperature: -40°C to +85°C
5. Moisture Sensitive Level: Level 1 (MSL1)

B. ELECTRICAL CHARACTERISTICS:

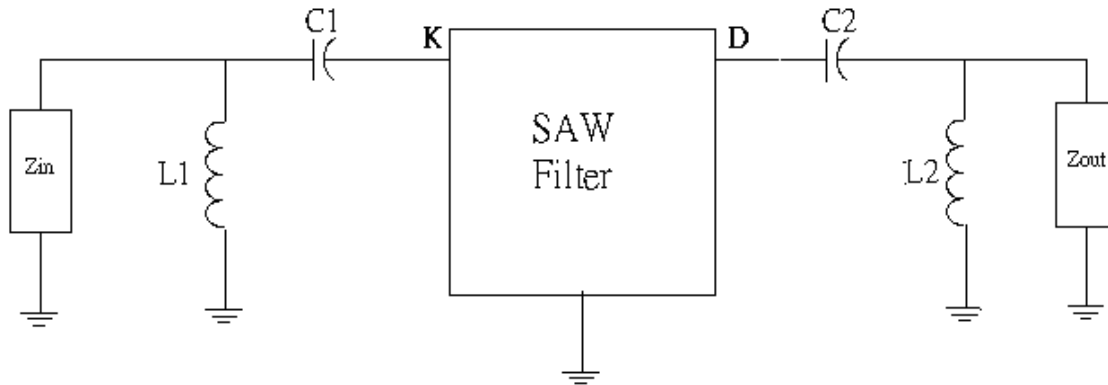
Ambient Temperature: 25°C

Item	Unit	Min.	Typ.	Max.
Center Frequency Fc	MHz	-	355.0	-
Minimum Insertion Loss IL	dB	-	11.2	12.5
1dB Bandwidth	MHz	5.0	6.5	-
3dB Bandwidth	MHz	-	8.3	-
35dB Bandwidth	MHz	-	14.0	16.0
Amplitude Ripple (Fc ±2.5MHz)	dB	-	0.7	1.0
S11 Return Loss (Fc ±2.5MHz)	dB	-	4.5	-
Attenuation (Reference level from minimum insertion loss)				
245 ~ 320MHz	dB	40	60	-
370 ~ 445MHz	dB	40	47	-
Temp Coefficient	ppm/°C	-18		

SAW Filter 355.0MHz
Part No: MP02584

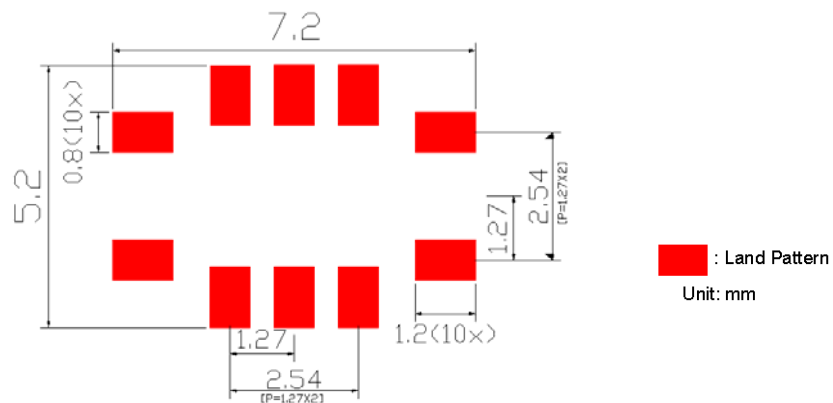
Model: TB0673A
Rev No: 2

C. MEASUREMENT CIRCUIT:

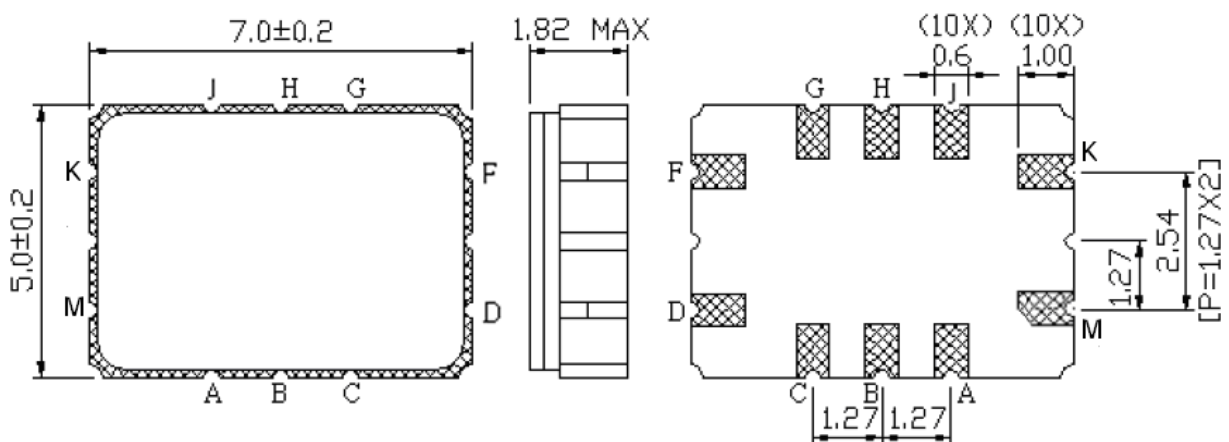


$Z_{IN} = Z_{OUT} = 50\text{ohm}$
 $L1 = 27\text{nH}, C1 = 57\text{pF}, L2 = 18\text{nH}, C2 = 68\text{pF}$

D. PCB FOOTPRINT:



E. OUTLINE DRAWING:

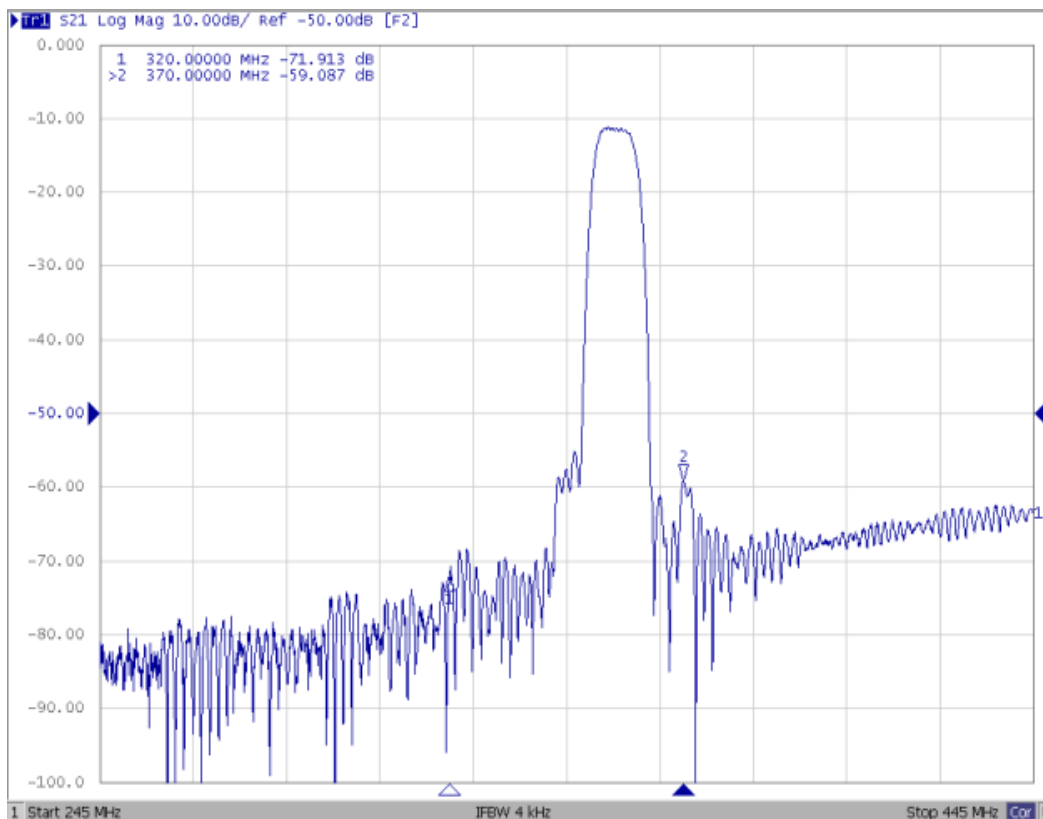
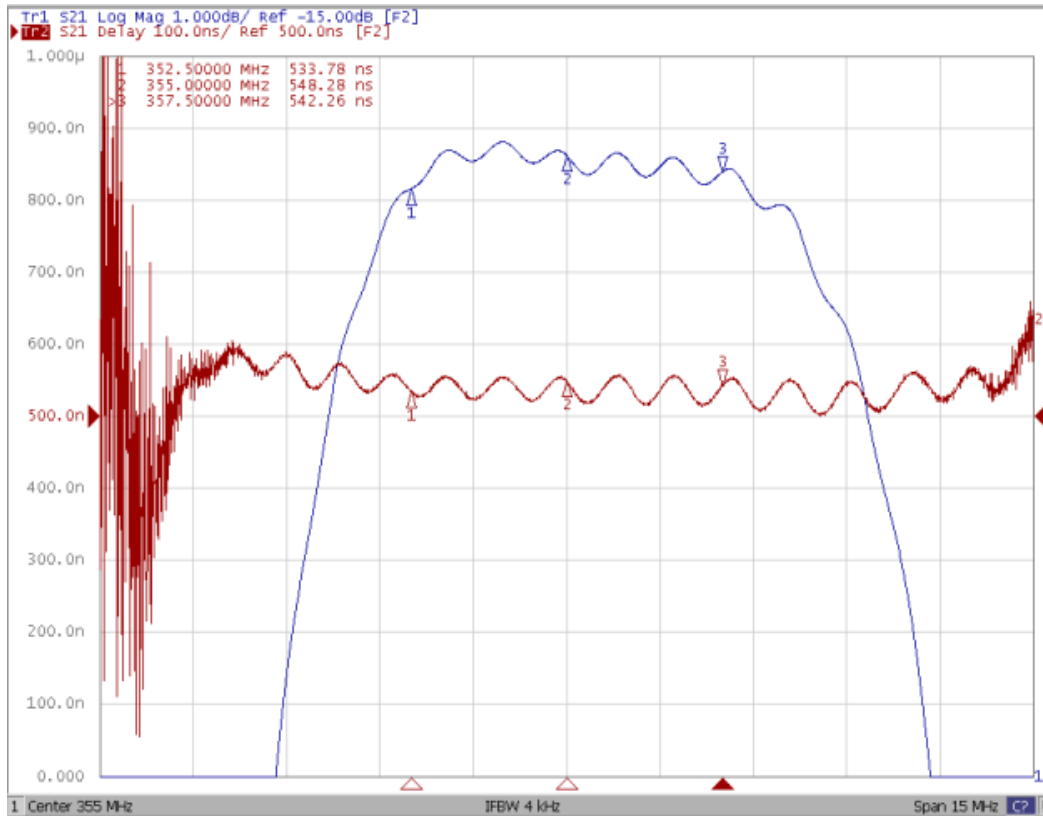


K: Input
 Pin D: Output
 A, B, C, F, G, H, J, M: To be ground
 Unit: mm

SAW Filter 355.0MHz
Part No: MP02584

Model: TB0673A
Rev No: 2

F. FREQUENCY CHARACTERISTICS:

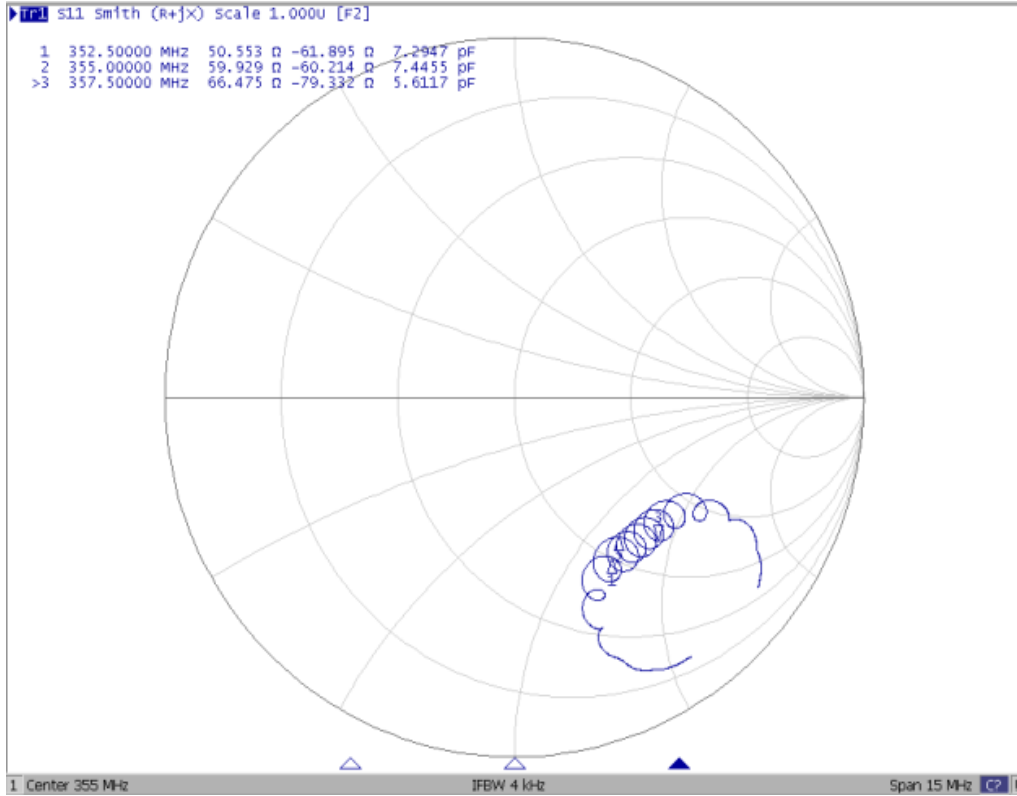


SAW Filter 355.0MHz
Part No: MP02584

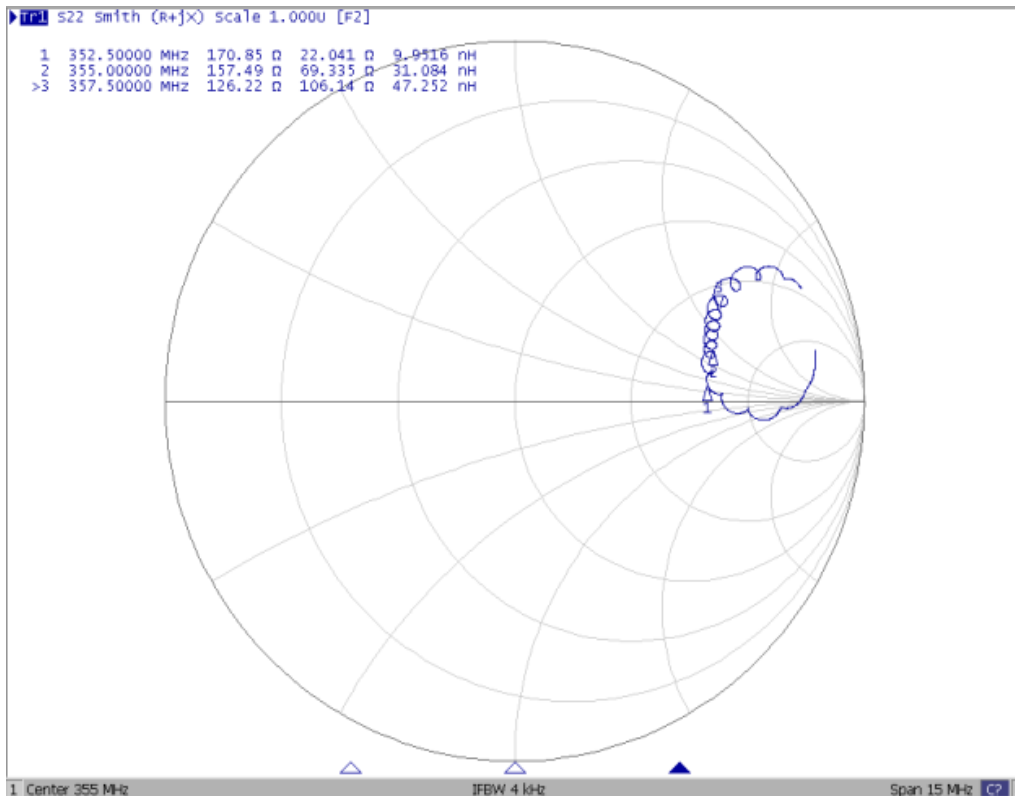
Model: TB0673A
Rev No: 2

Reflection Functions

S11



S22

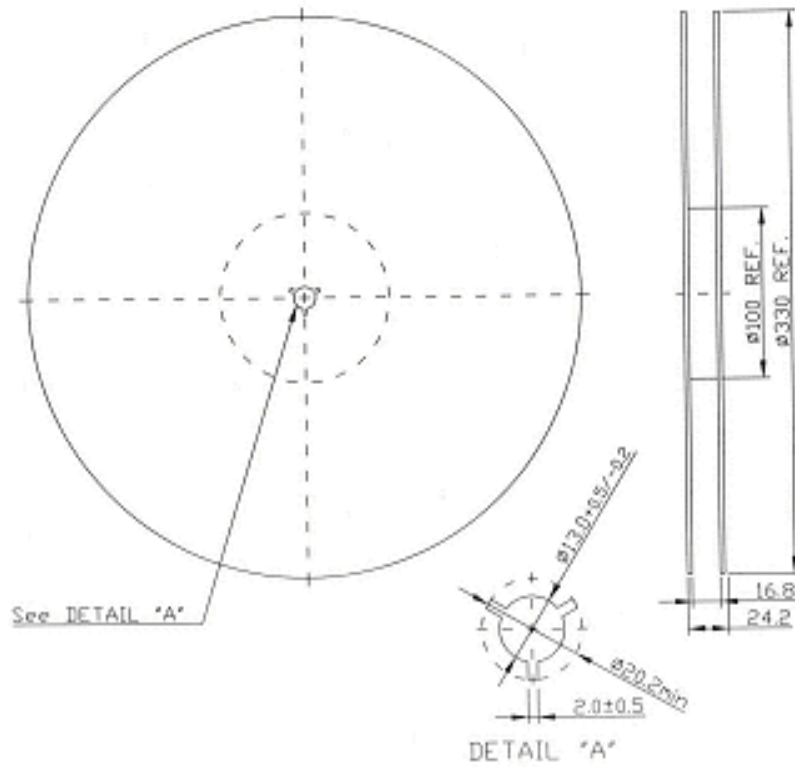


SAW Filter 355.0MHz
Part No: MP02584

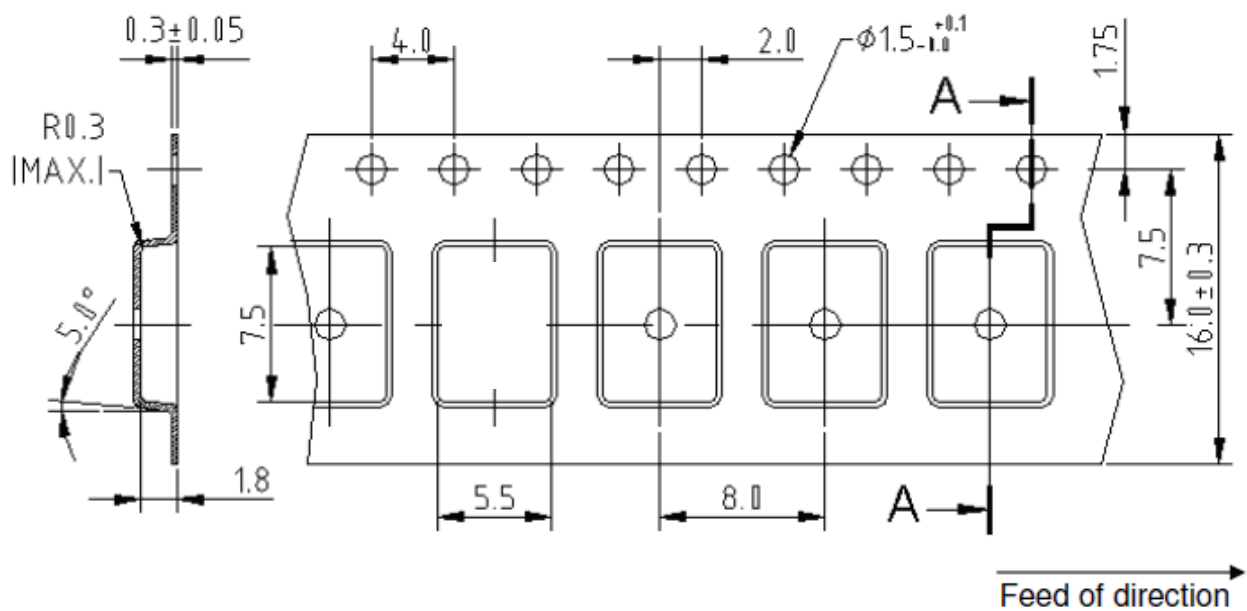
Model: TB0673A
Rev No: 2

G. PACKING:

1. Reel Dimension



2. Tape Dimension



SAW Filter 355.0MHz
Part No: MP02584

Model: TB0673A
Rev No: 2

H. RECOMMENDED REFLOW PROFILE:

1. Preheating shall be fixed at 150 ~ 180°C for 60 ~ 90 seconds.
2. Ascending time to preheating temperature 150°C shall be 30 seconds min.
3. Heating shall be fixed at 220°C for 50 ~ 80 seconds and at 260°C +0/-5°C peak (20 ~ 40 sec).
4. Repeats: Twice maximum

