

SAW Filter 1457.0MHz

Model: TA1632A

Part No: MP08174

Rev No: 1

A. MAXIMUM RATING:

Electrostatic Sensitive Device (ESD)

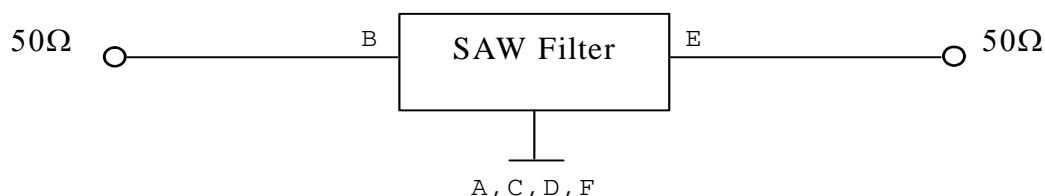
1. Input Power Level: 10dBm
2. DC voltage: 3V
3. Operating Temperature: -40°C to +85°C
4. Storage Temperature: -40°C to +85°C

B. ELECTRICAL CHARACTERISTICS:

Item	Unit	Min.	Typ.	Max.
Center frequency Fc	MHz	-	1457	-
Insertion Loss (1452 ~ 1462MHz) IL	dB	-	2.8	4
Insertion Loss at Center Frequency IL c	dB	-	2.75	3.3
Amplitude Ripple (1452 ~ 1462MHz)	dB	-	0.1	1
Bandwidth @ -1dB	MHz	10	39	-
VSWR (1452 ~ 1462MHz)	-	-	1.7	2
Attenuation (Reference level from 0dB)				
DC ~ 100MHz	dB	60	71	-
100 ~ 1395MHz	dB	40	50	-
1395 ~ 1401MHz	dB	30	51	-
1513 ~ 1519MHz	dB	30	42	-
2852 ~ 2976MHz	dB	40	61	-
3500 ~ 4000MHz	dB	15	25	-
Temperature coefficient of frequency	ppm/k	-	-36	-

C. MEASUREMENT CIRCUIT:

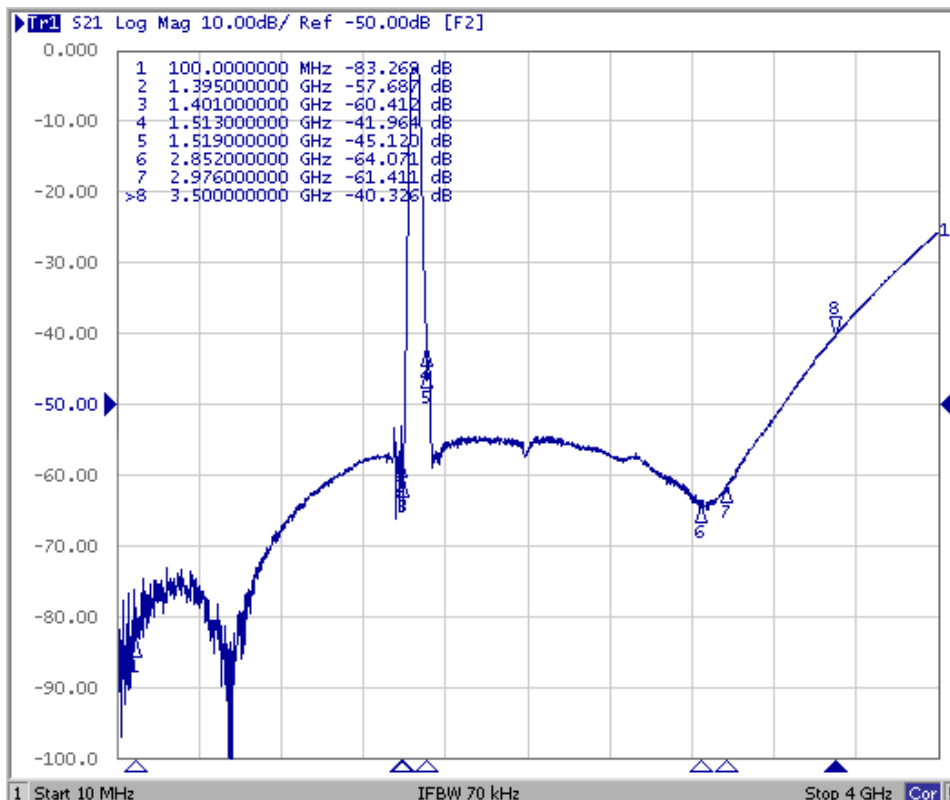
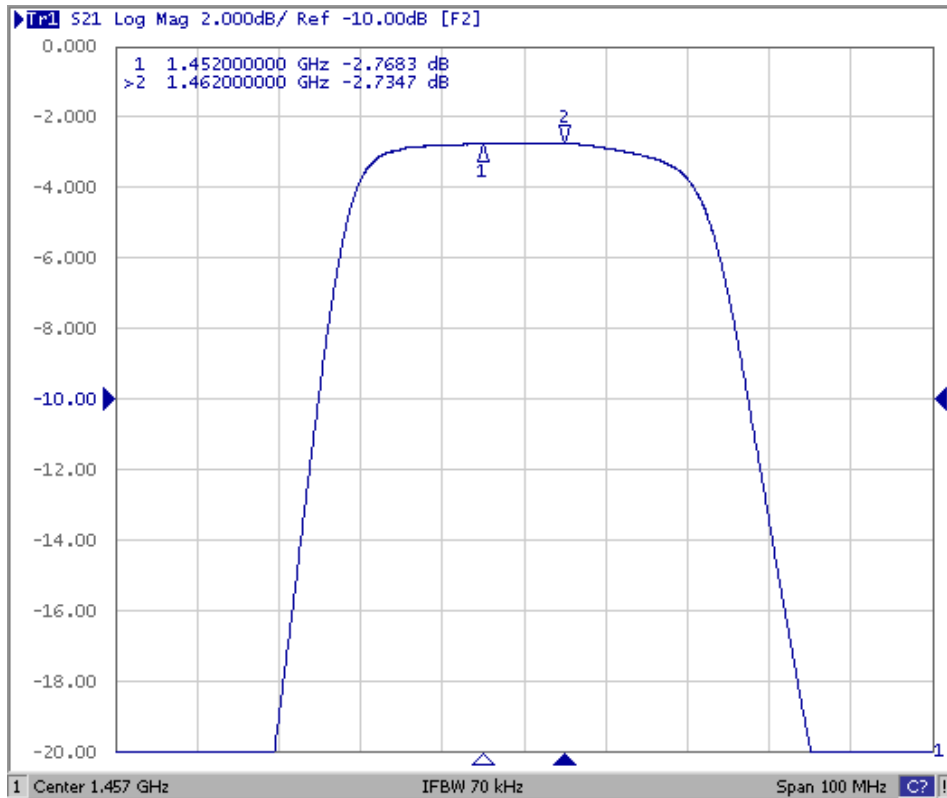
HP Network analyzer



SAW Filter 1457.0MHz
Part No: MP08174

Model: TA1632A
Rev No: 1

D. FREQUENCY CHARACTERISTICS:

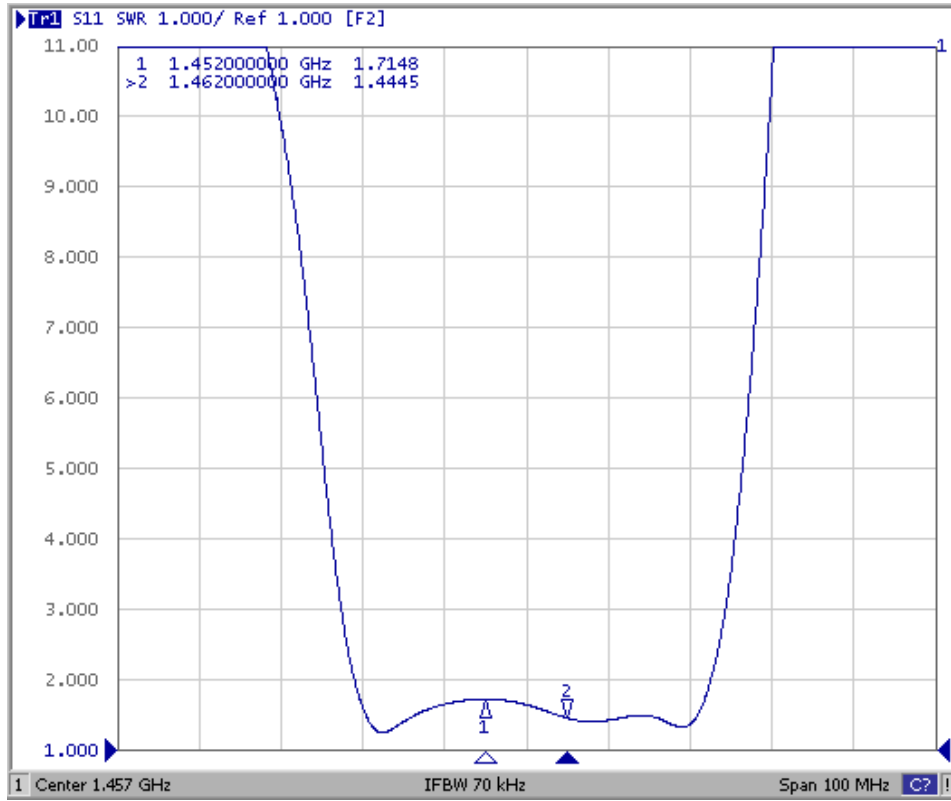


SAW Filter 1457.0MHz
Part No: MP08174

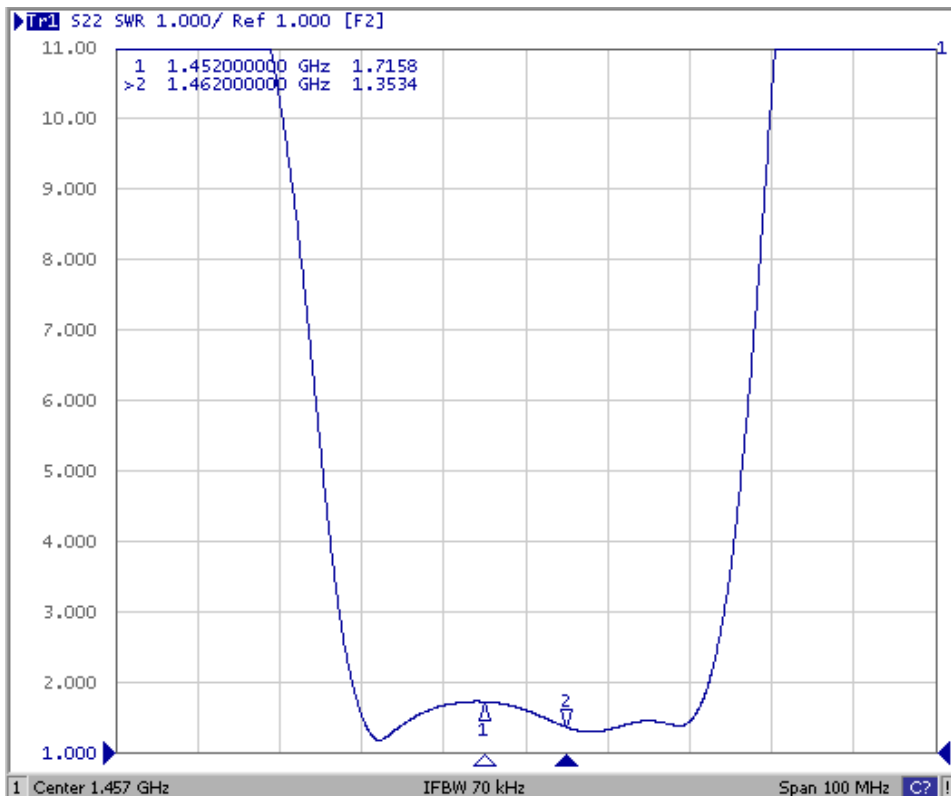
Model: TA1632A
Rev No: 1

Reflection Functions:

S11



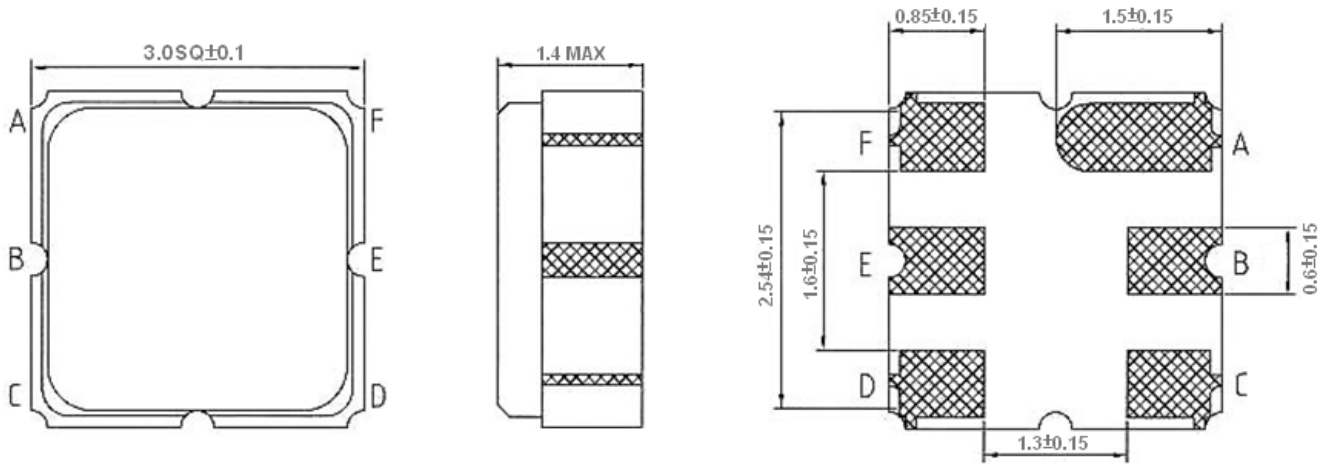
S22



SAW Filter 1457.0MHz
Part No: MP08174

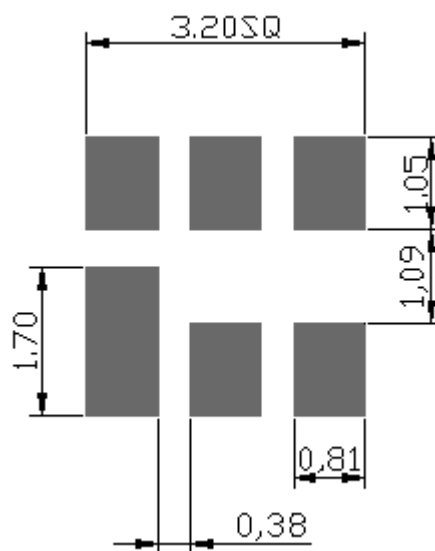
Model: TA1632A
Rev No: 1

E. OUTLINE DRAWING:



B: Input
E: Output
A, C, D, F: Ground
Unit: mm

F. PCB FOOTPRINT:

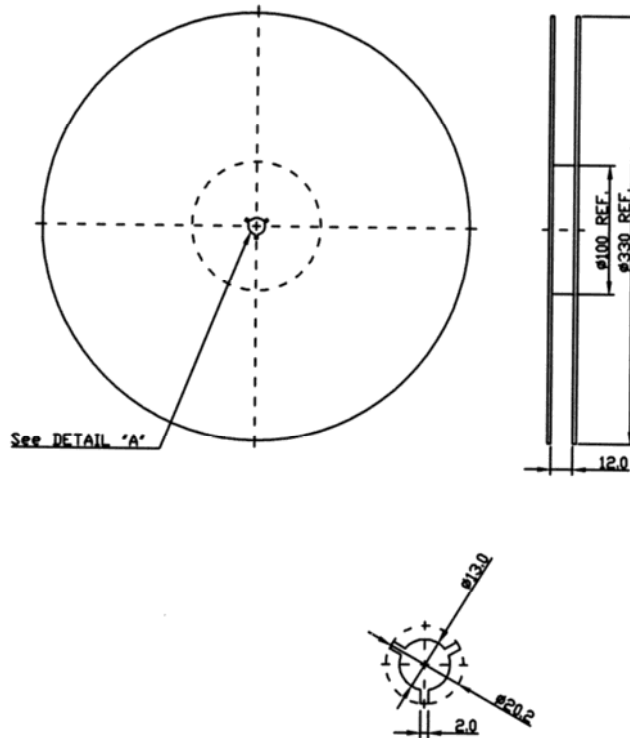


SAW Filter 1457.0MHz
Part No: MP08174

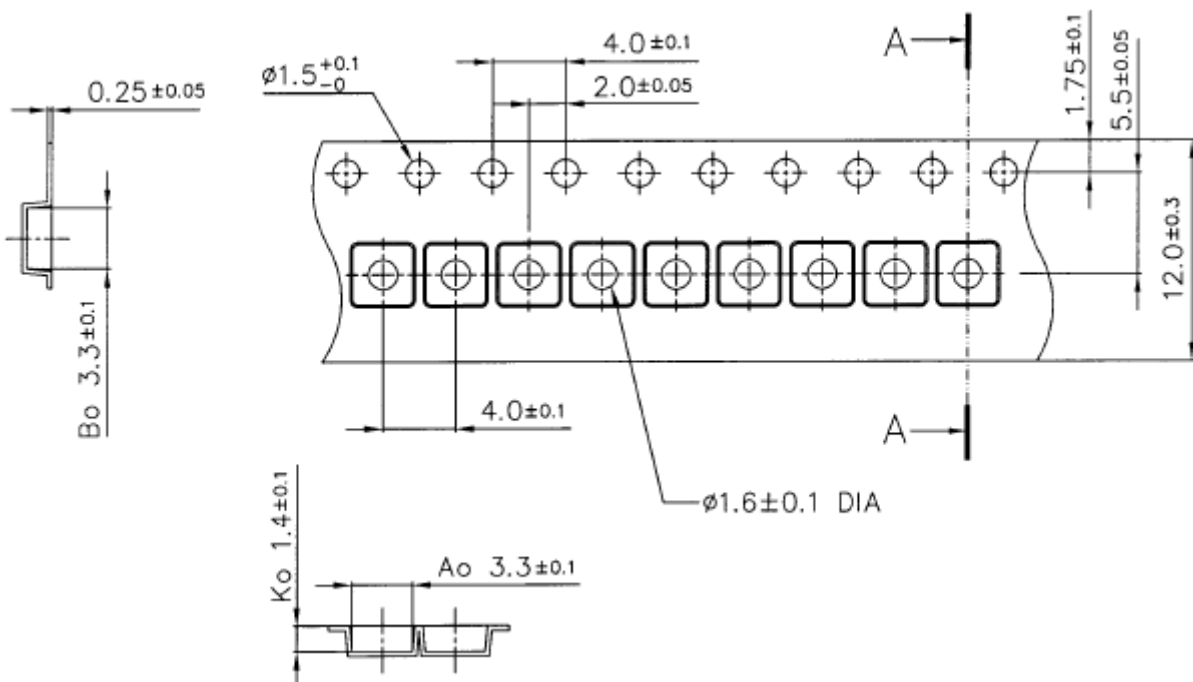
Model: TA1632A
Rev No: 1

G. PACKING:

1. Reel Dimension



2. Tape Dimension



SAW Filter 1457.0MHz
Part No: MP08174

Model: TA1632A
Rev No: 1

H. RECOMMENDED REFLOW PROFILE:

