

SAW Filter 922.50MHz
Part No: MP01291

Model: TA0775A
Rev No: 3

A. MAXIMUM RATING:

Electrostatic Sensitive Device (ESD)

1. Input Power Level: 10dBm
2. DC voltage: 5V
3. Operating Temperature: -40°C to 85°C
4. Storage Temperature: -40°C to +85°C

B. CHARACTERISTICS:

Item	Min.	Typ.	Max.
Center frequency Fc MHz	-	922.5	-
Insertion loss 920 ~ 925MHz IL (dB)	-	2.7	4.2
Amplitude ripple 920 ~ 925MHz (dB)	-	0.4	2.0
Return loss 920 ~ 925MHz (dB)	10	16	-
VSWR 920 ~ 925MHz	-	1.6	2.0
Attenuation (Reference level from 0dB)			
775 ~ 835MHz (dB)	40	45	-
835 ~ 895MHz (dB)	36	44	-
970 ~ 992MHz (dB)	36	44	-
992 ~ 1075MHz (dB)	38	45	-
Source impedance Z _S (Ω)	-	50	-
Load impedance Z _L (Ω)	-	50	-

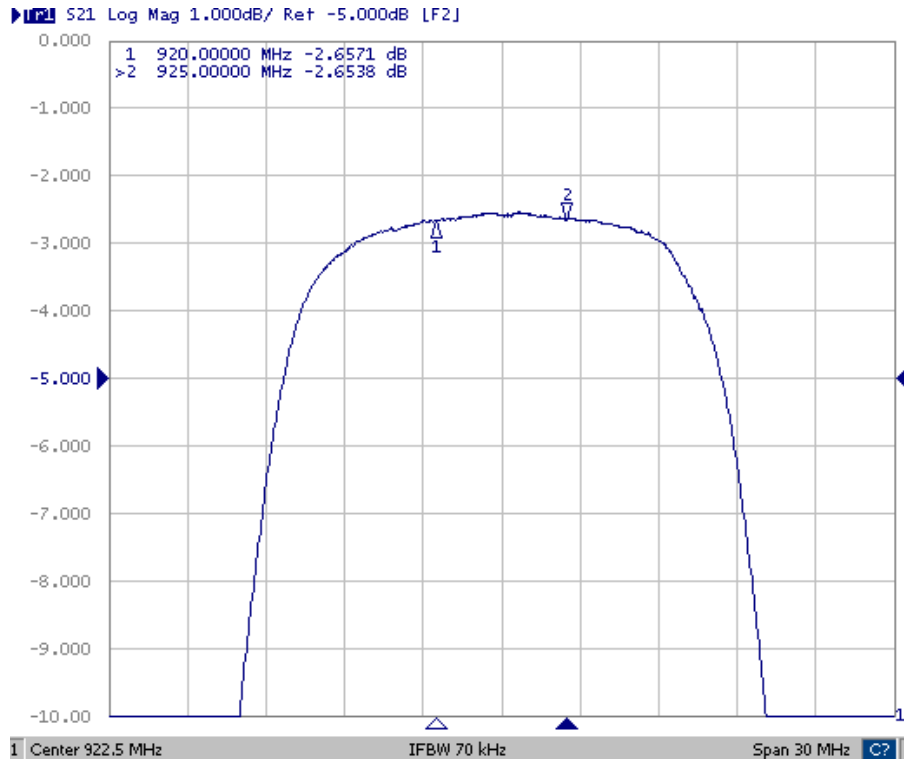
Note: No matching network required for operation at 50Ω

SAW Filter 922.50MHz
Part No: MP01291

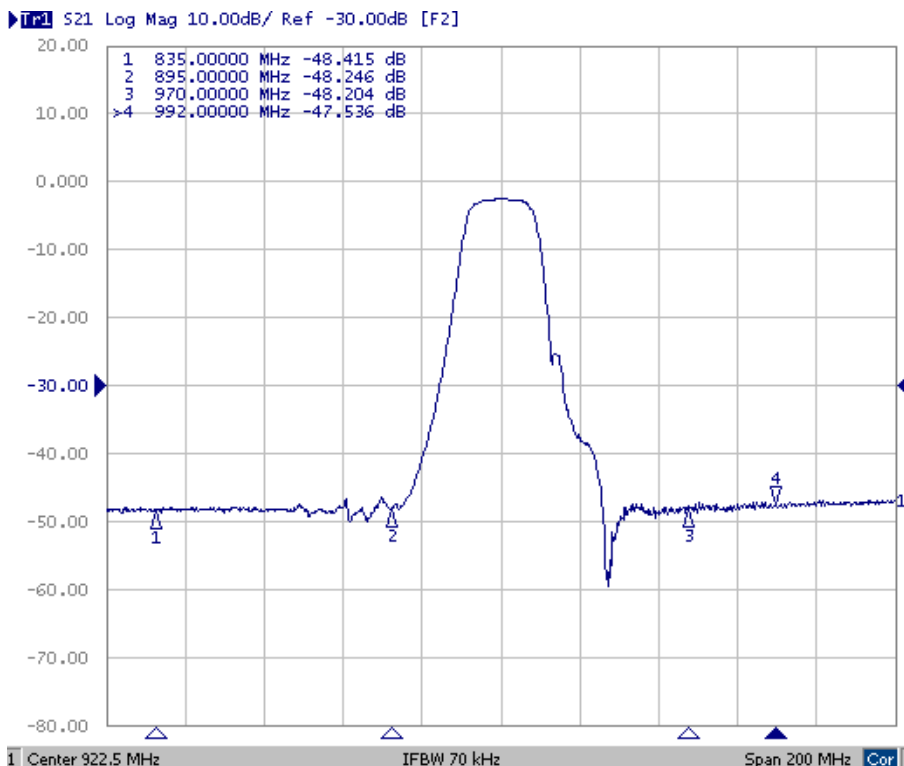
Model: TA0775A
Rev No: 3

C. FREQUENCY CHARACTERISTICS:

1. Transfer Function



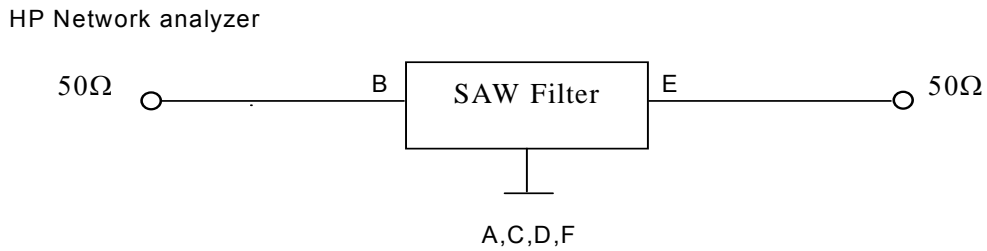
2. Wideband



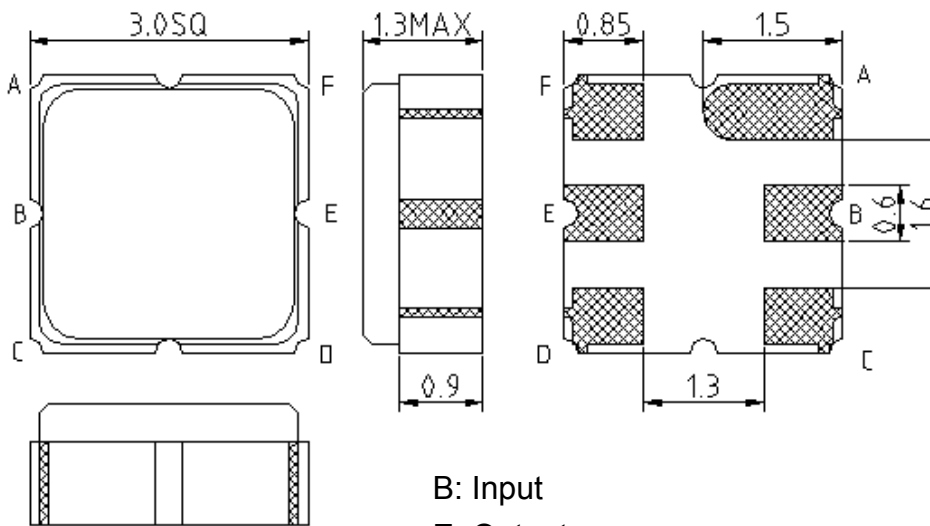
SAW Filter 922.50MHz
Part No: MP01291

Model: TA0775A
Rev No: 3

D. MEASUREMENT CIRCUIT:

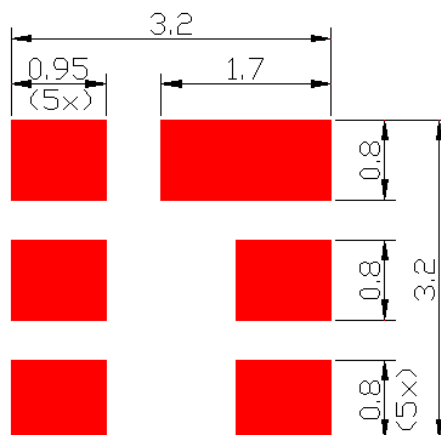


E. OUTLINE DRAWING:



B: Input
 E: Output
 A, C, D, F: Ground
 Unit: mm

F. PCB FOOTPRINT:

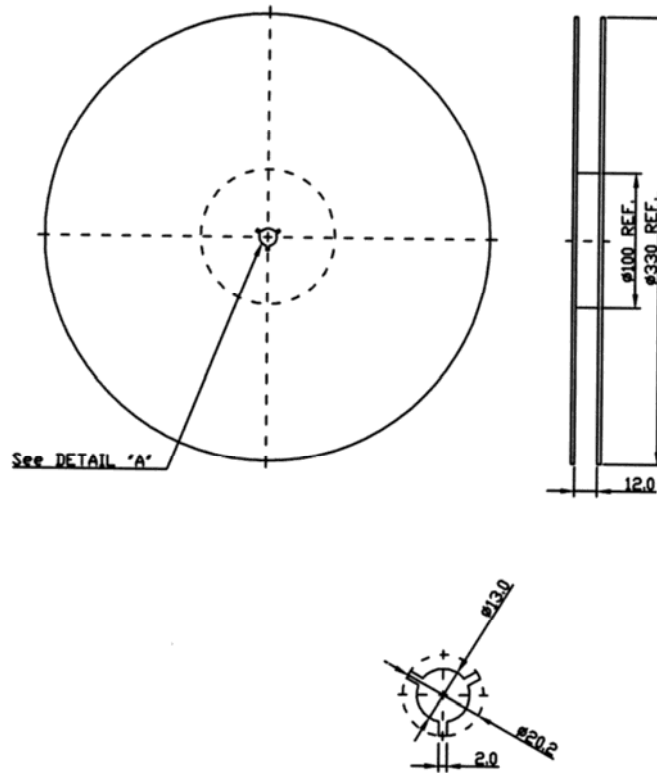


SAW Filter 922.50MHz
Part No: MP01291

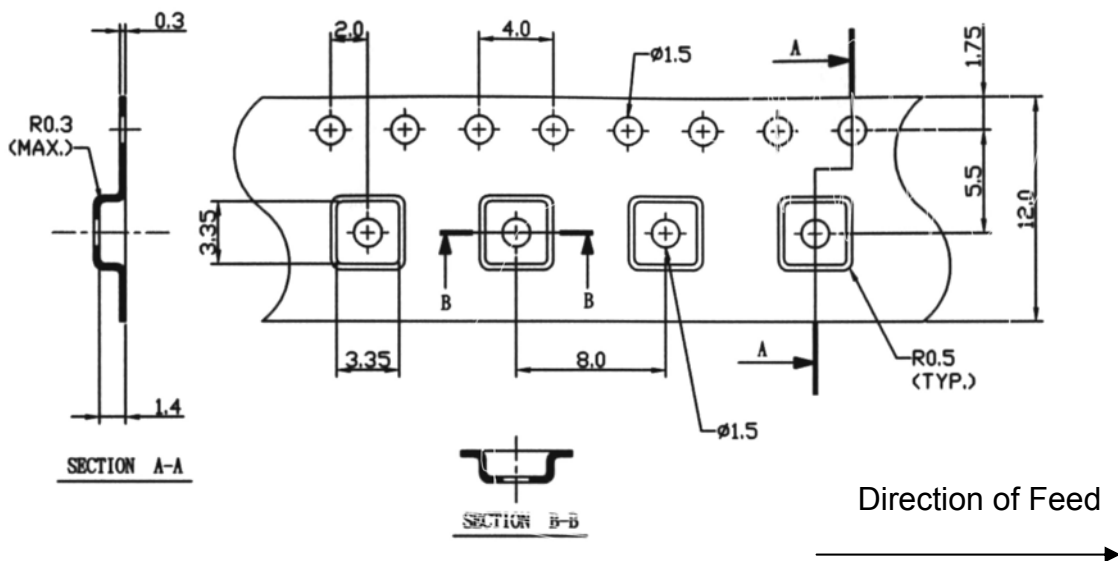
Model: TA0775A
Rev No: 3

G. PACKING:

1. Reel Dimension



2. Tape Dimension



SAW Filter 922.50MHz
Part No: MP01291

Model: TA0775A
Rev No: 3

H. RECOMMENDED REFLOW PROFILE:

1. Preheating shall be fixed at 150 ~ 180°C for 60 ~ 90 seconds.
2. Ascending time to preheating temperature 150°C shall be 30 seconds min.
3. Heating shall be fixed at 220°C for 50 ~ 80 seconds and at 245 ~ 260°C peak (min. 10 sec).
4. Time: 2 times.

