

SAW Filter 1199.0MHz
Part No: MP04206

Model: TA1104A
Rev No: 2

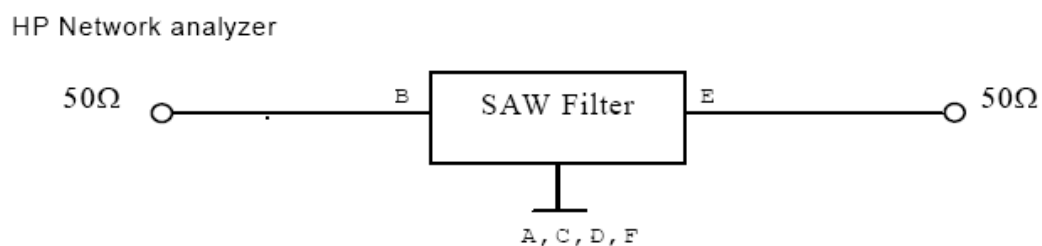
A. MAXIMUM RATING:

1. Input Power Level: 10dBm
2. DC voltage: 3V
3. Operating Temperature: -40°C to +85°C
4. Storage Temperature: -40°C to +85°C
5. Moisture Sensitivity Level: Level 1 (MSL1)

B. CHARACTERISTICS:

| Item | Unit | Min. | Typ. | Max. |
|--|------|------|------|------|
| Center frequency Fc | MHz | - | 1199 | - |
| Insertion loss 1145.0 ~ 1253.0MHz IL | dB | - | 4.6 | 5.5 |
| Pass Band Ripple 1145.0 ~ 1253.0MHz | dB | - | 2.7 | 3.5 |
| Group Delay Variation 1145.0 ~ 1253.0MHz | ns | - | 15 | 30 |
| Return loss 1145.0 ~ 1253.0MHz | dB | 6 | 7.5 | - |
| Attenuation (Reference level from 0dB) | | | | |
| 300.0 ~ 1000.0MHz | dB | 18 | 25 | - |
| 1293.0 ~ 2000.0MHz | dB | 9 | 16 | - |
| Source impedance Z _S | Ω | - | 50 | - |
| Load impedance Z _L | Ω | - | 50 | - |

C. MEASUREMENT CIRCUIT:

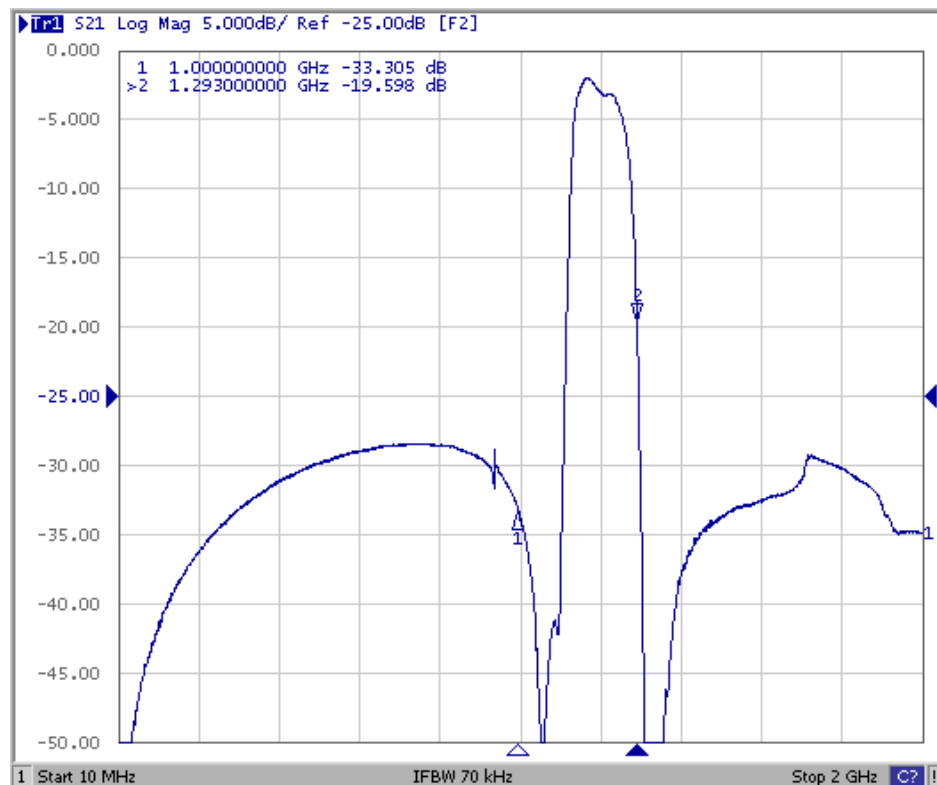
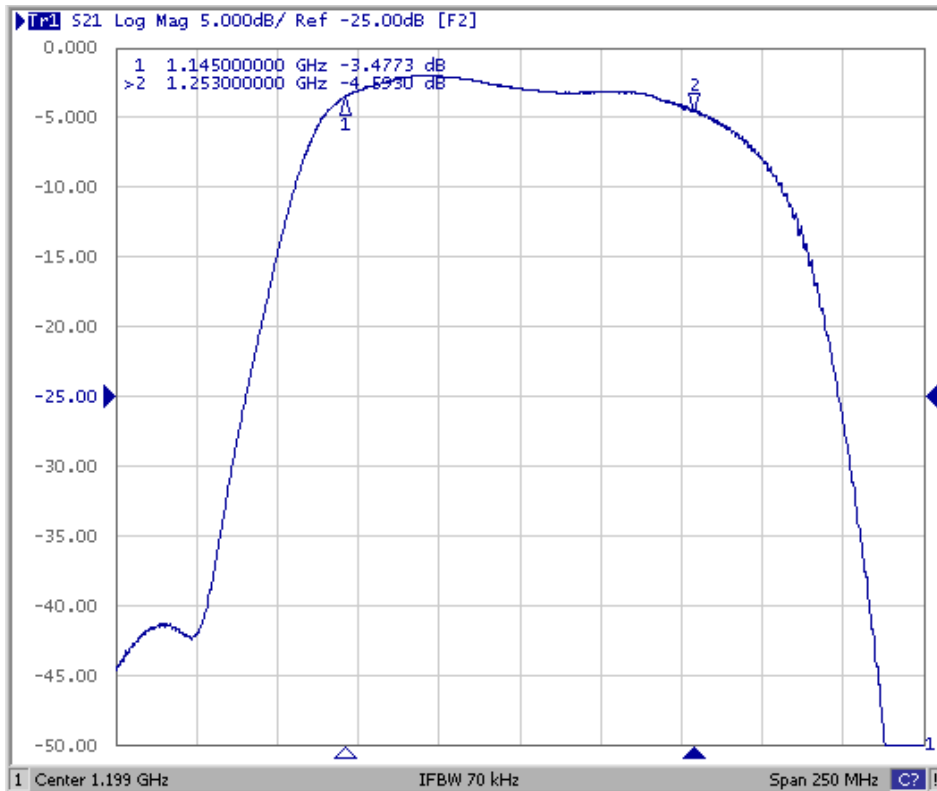


SAW Filter 1199.0MHz
Part No: MP04206

Model: TA1104A
Rev No: 2

D. FREQUENCY CHARACTERISTICS:

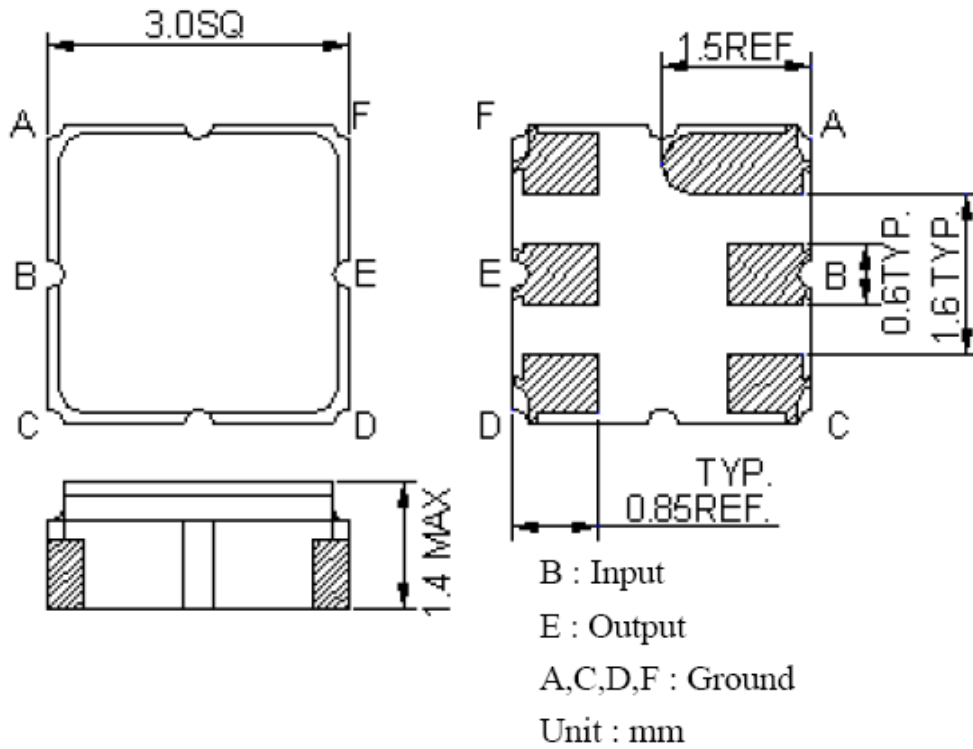
Transfer Function



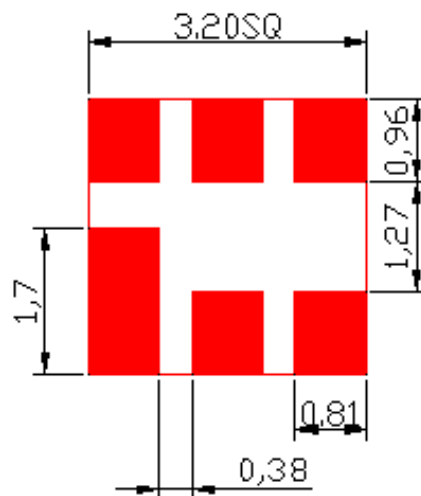
SAW Filter 1199.0MHz
Part No: MP04206

Model: TA1104A
Rev No: 2

E. OUTLINE DRAWING:



F. PCB FOOTPRINT:

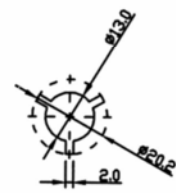
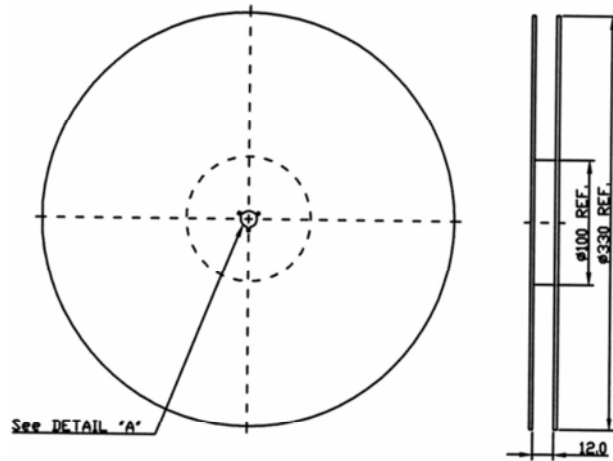


SAW Filter 1199.0MHz
Part No: MP04206

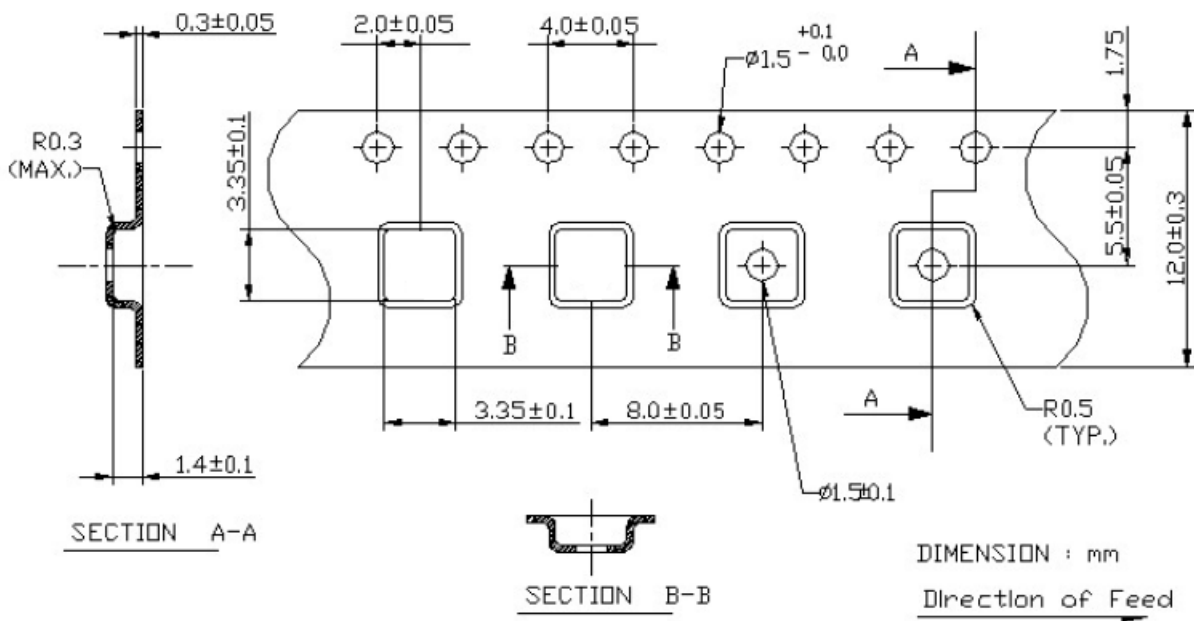
Model: TA1104A
Rev No: 2

G. PACKING:

1. Reel Dimensions



2. Tape Dimensions



SAW Filter 1199.0MHz
Part No: MP04206

Model: TA1104A
Rev No: 2

H. RECOMMENDED REFLOW PROFILE:

1. Preheating shall be fixed at 150~180°C for 60~90 seconds.
2. Ascending time to preheating temperature 150°C shall be 30 seconds min.
3. Heating shall be fixed at 220°C for 50~80 seconds and at 260°C +0/-5°C peak (20~40 sec).
4. Time: 2 times.

