

SAW Filter 1246.0MHz

Model: TA1034A

Part No: MP04125

Rev No:1

A MAXIMUM RATING:

1. Input Power Level: 10dBm
2. DC Voltage: 3V
3. Operating Temperature: -40°C to +85°C
4. Storage Temperature: -50°C to +95°C

B. ELECTRICAL CHARACTERISTICS:

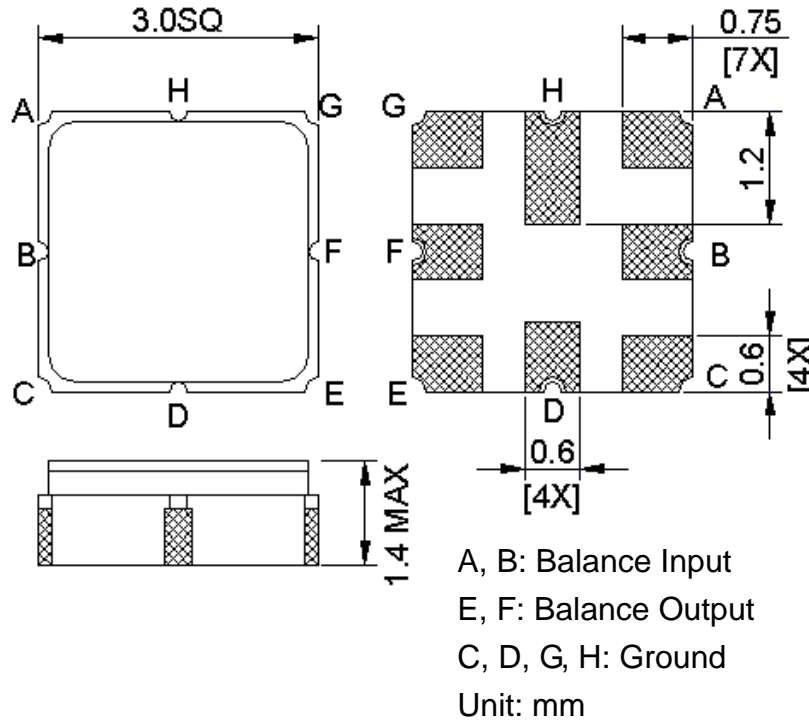
1. Terminating source impedance (differential): $Z_S = 200\Omega // 30nH$
2. Terminating load impedance (differential): $Z_L = 200\Omega // 30nH$

Item	Unit	Min.	Typ.	Max.	Note
Center Frequency Fc	MHz	-	1246	-	-
Bandwidth at -3dB	MHz	-	47	-	-
Insertion Loss in 1241 ~ 1251MHz	dB	-	2.2	4	-
Amplitude ripple (1241 ~ 1251MHz)	dB	-	0.4	2	-
Group delay variation (1241 ~ 1251MHz)	ns	-	8	15	-
I/O Return Loss (1241 ~ 1251MHz)	dB	8	12	-	-
Attenuation (reference level from 0dB)					
10 ~ 930MHz	dB	45	50	-	-
1400 ~ 2000MHz	dB	44	50	-	-
2000 ~ 2400MHz	dB	38	50	-	-

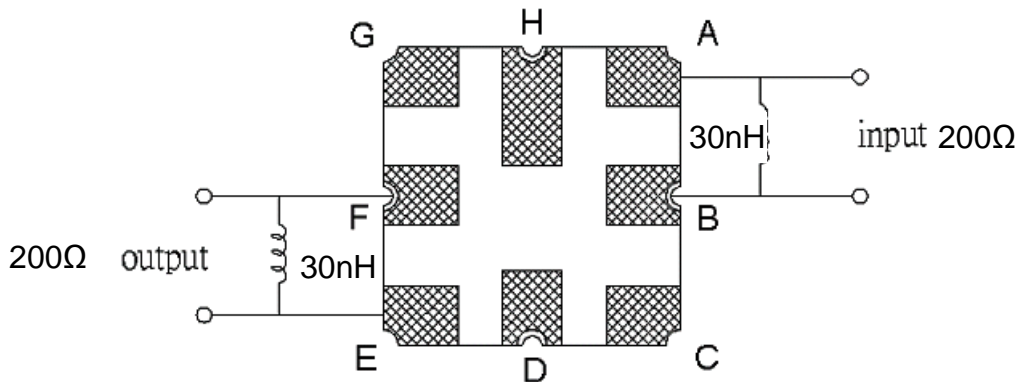
SAW Filter 1246.0MHz
Part No: MP04125

Model: TA1034A
Rev No:1

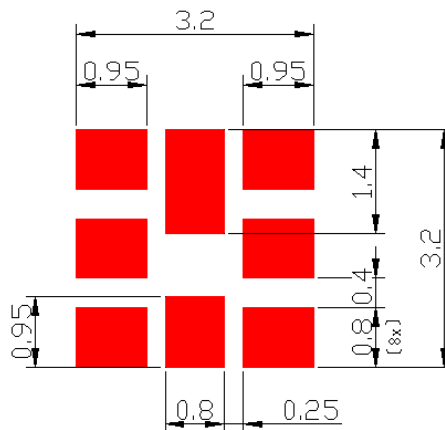
C. OUTLINE DRAWING:



D. MEASUREMENT CIRCUIT:



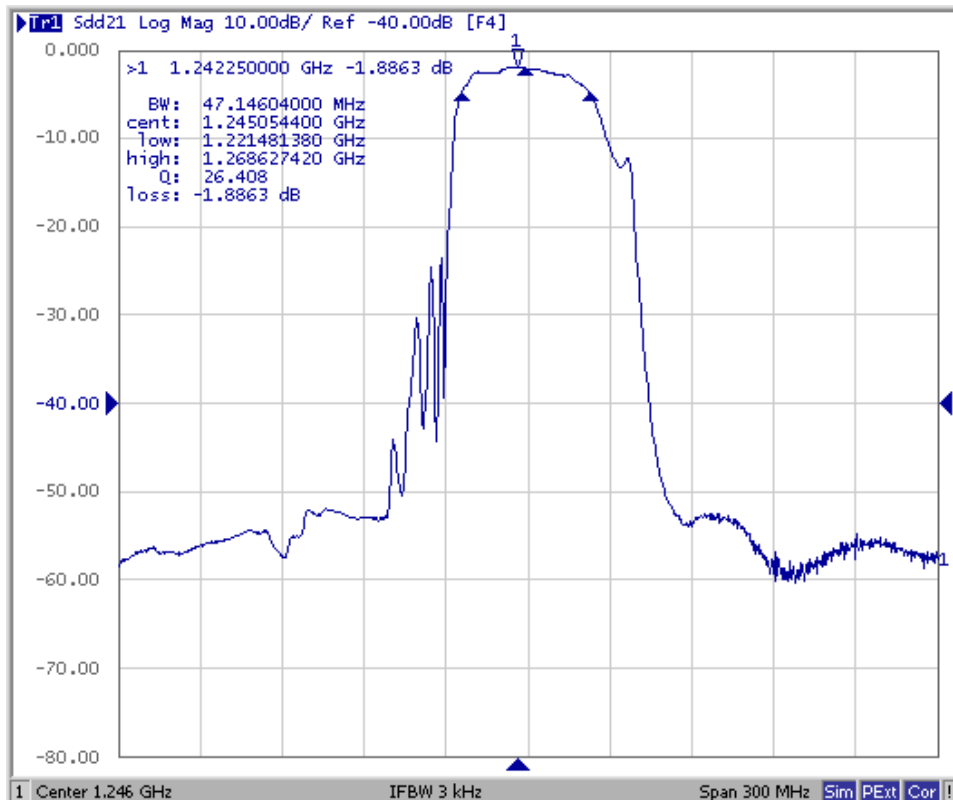
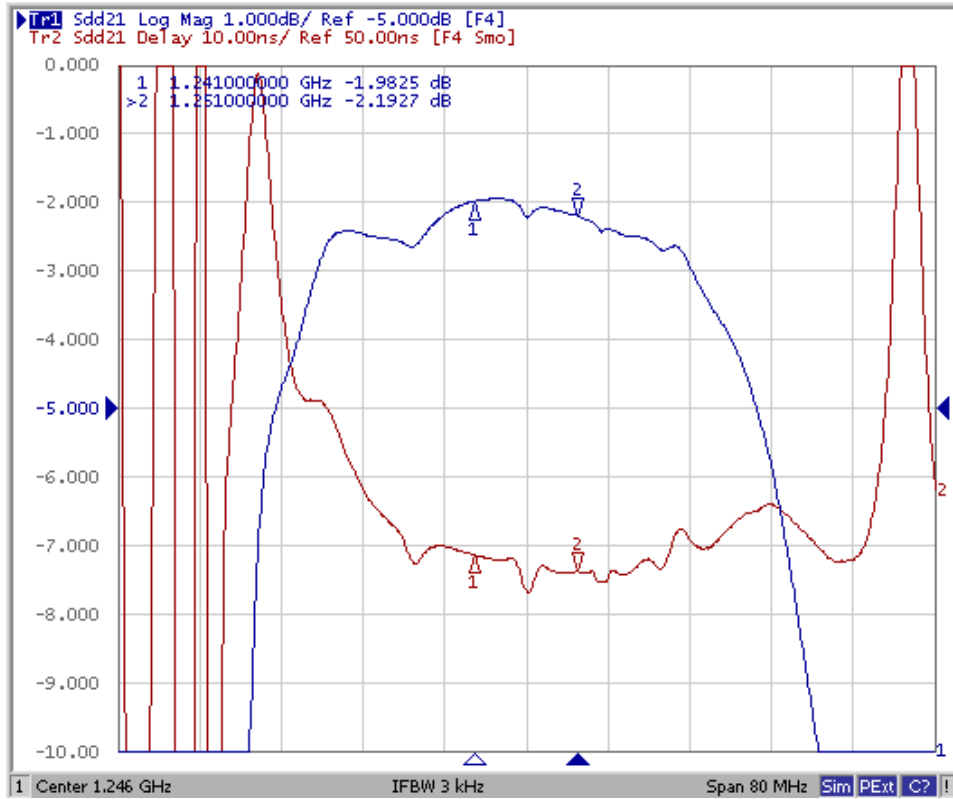
E. PCB FOOTPRINT:



SAW Filter 1246.0MHz
Part No: MP04125

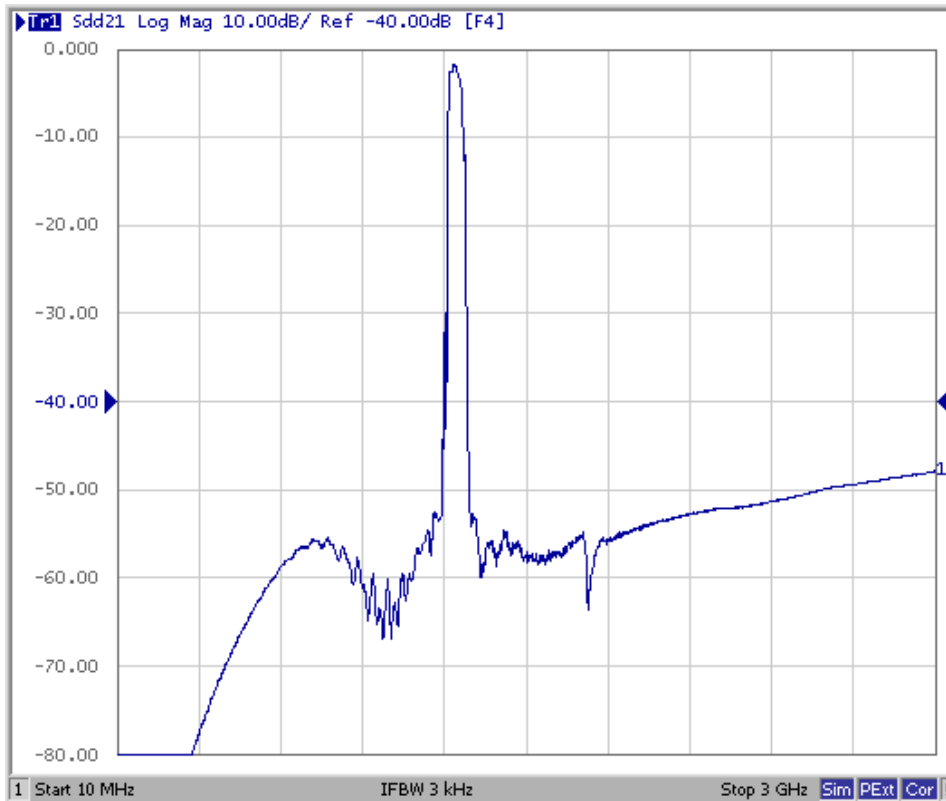
Model: TA1034A
Rev No:1

F. FREQUENCY CHARACTERISTICS:



SAW Filter 1246.0MHz
Part No: MP04125

Model: TA1034A
Rev No:1

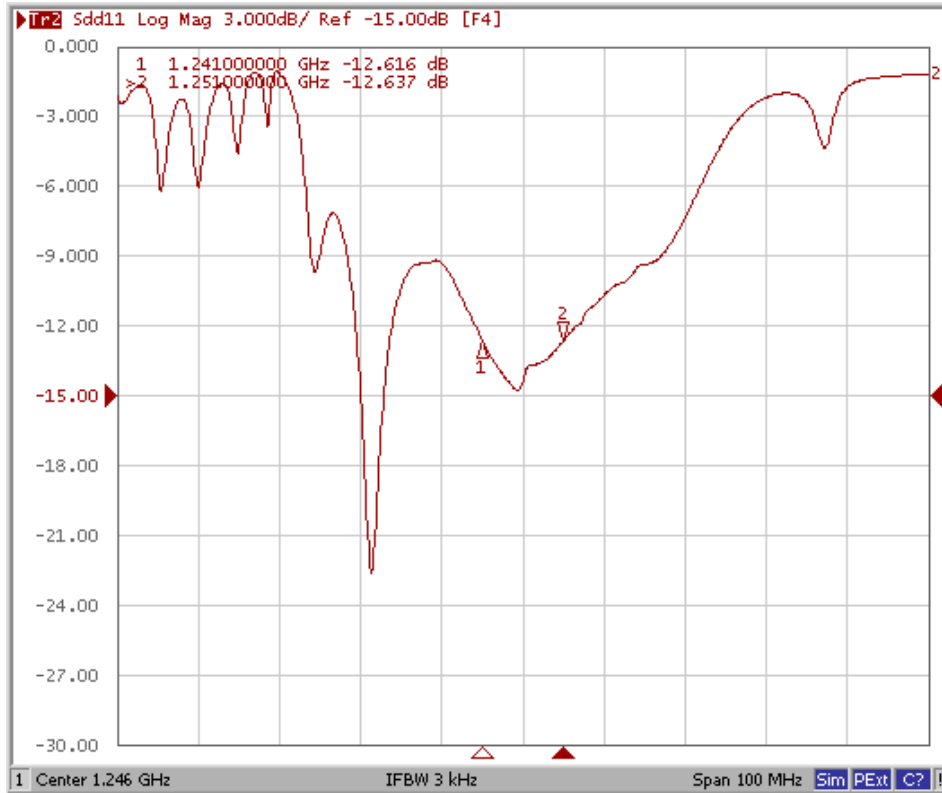


SAW Filter 1246.0MHz
Part No: MP04125

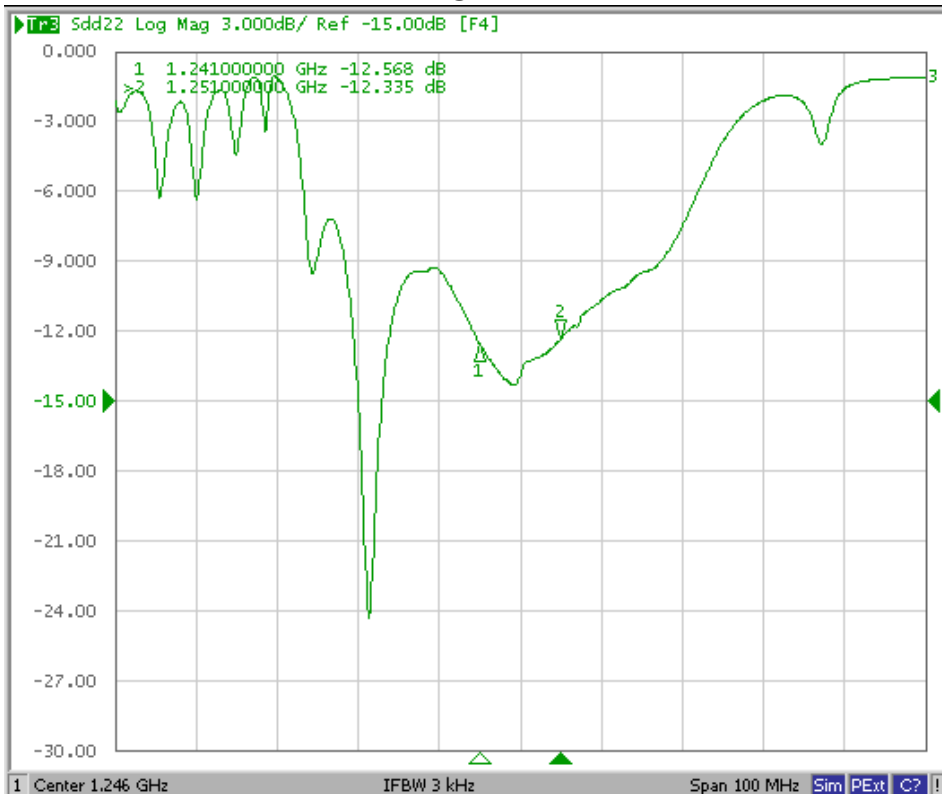
Model: TA1034A
Rev No:1

Reflection Functions

S11



S22



SAW Filter 1246.0MHz
Part No: MP04125

Model: TA1034A
Rev No:1

H. RECOMMENDED REFLOW PROFILE:

