

**SAW Filter 433.920MHz**  
**Part No: MP01061**

**Model: TA0649B**  
**Rev No: 1**

**A. MAXIMUM RATING:**

1. Input Power Level: 10dBm
2. DC voltage: 3V
3. Operating Temperature: -40°C to 125°C
4. Storage Temperature: -40°C to +125°C

**B. CHARACTERISTICS:**

Item	Unit	Min.	Typ.	Max.
Center frequency Fc	MHz	-	433.92	-
Insertion loss 433.00 ~ 434.71MHz IL	dB	-	2.2	4.0
Amplitude ripple 433.00 ~ 434.71MHz	dB	-	0.7	2.0
Attenuation (Reference level from 0dB)				
389.0 ~ 392.0MHz	dB	42	54	-
411.0 ~ 414.0MHz	dB	40	50	-
454.0 ~ 457.0MHz	dB	40	51	-
475.5 ~ 478.5MHz	dB	42	52	-
Source impedance Z <sub>s</sub>	Ω	-	50	-
Load impedance Z <sub>L</sub>	Ω	-	50	-

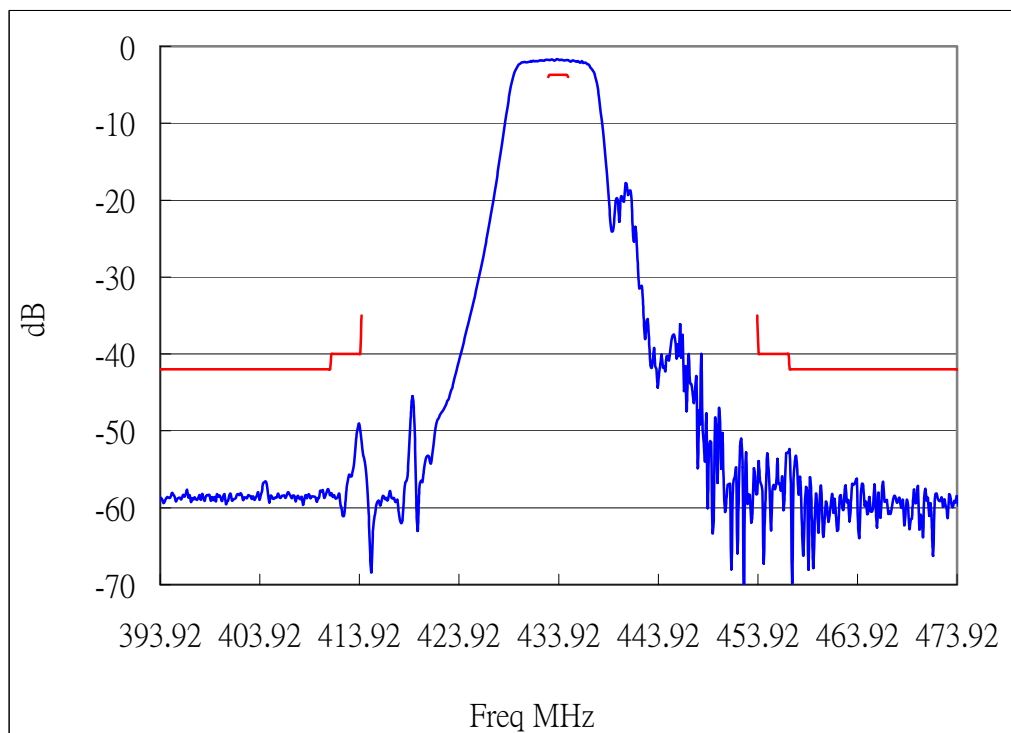
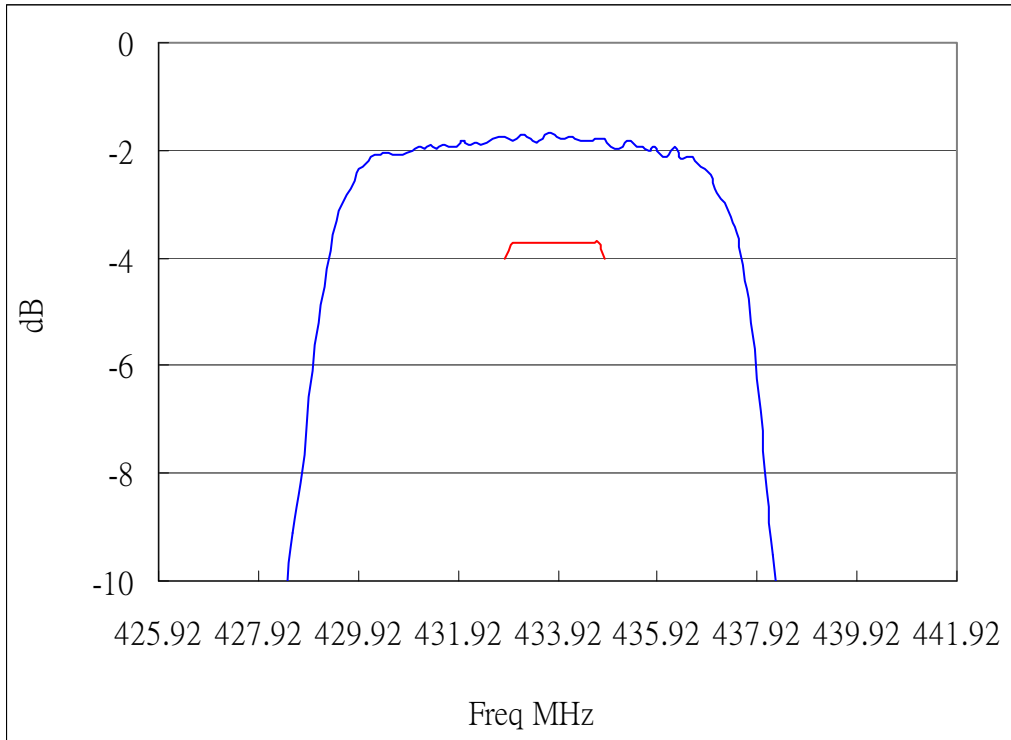
Note: No matching network required for operation at 50Ω

**SAW Filter 433.920MHz**  
**Part No: MP01061**

**Model: TA0649B**  
**Rev No: 1**

**C. FREQUENCY CHARACTERISTICS:**

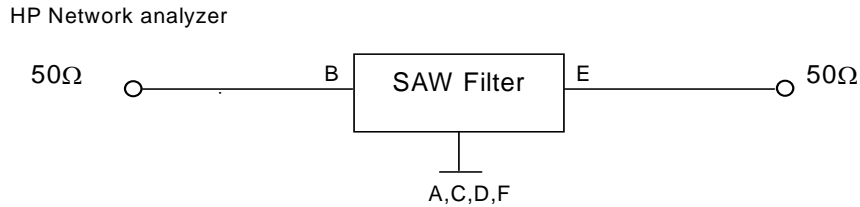
Transfer Function



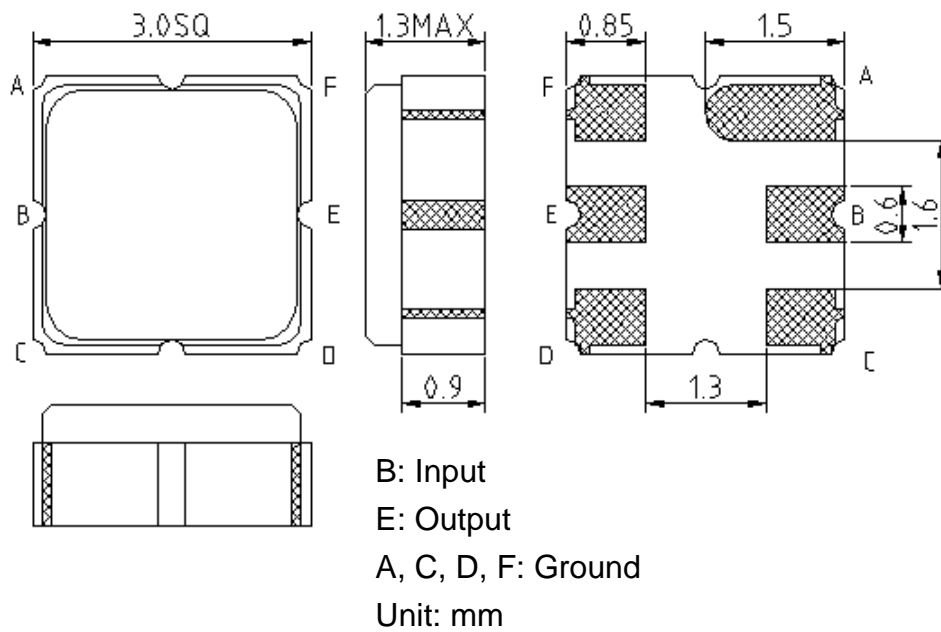
**SAW Filter 433.920MHz**  
**Part No: MP01061**

**Model: TA0649B**  
**Rev No: 1**

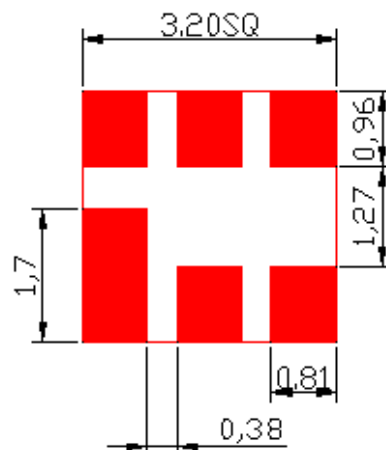
**D. MEASUREMENT CIRCUIT:**



**E. OUTLINE DRAWING:**



**F. PCB FOOTPRINT:**

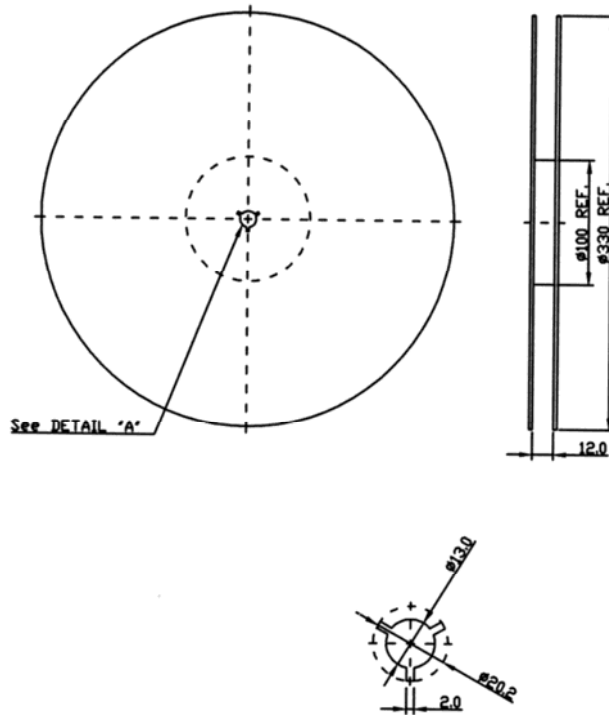


**SAW Filter 433.920MHz**  
**Part No: MP01061**

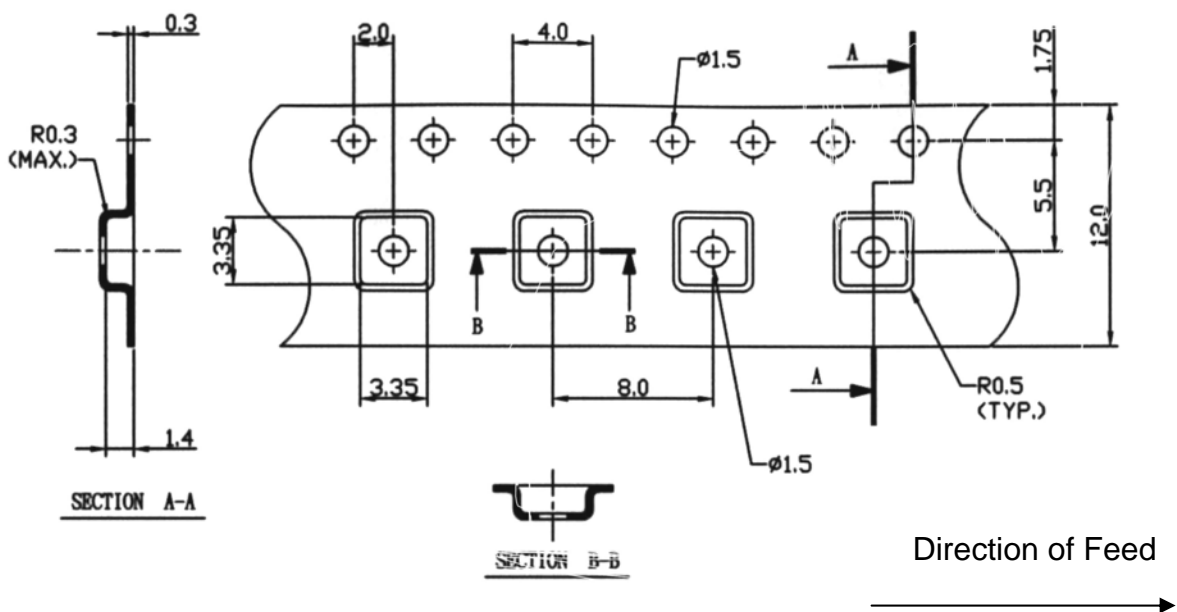
**Model: TA0649B**  
**Rev No: 1**

**G. PACKING:**

1. Reel Dimension



2. Tape Dimension



**SAW Filter 433.920MHz**  
**Part No: MP01061**

**Model: TA0649B**  
**Rev No: 1**

**H. RECOMMENDED REFLOW PROFILE:**

