

SAW Filter 1176.5MHz
Part No: MP03242

Model: TA1032A
Rev No: 1

A. MAXIMUM RATING:

1. Input Power Level: 10dBm
2. DC Voltage: 3V
3. Operating Temperature: -40°C to +85°C
4. Storage Temperature: -50°C to +95°C

B. ELECTRICAL CHARACTERISTICS:

Terminating source impedance (differential): $Z_S = 200\Omega // 30nH$

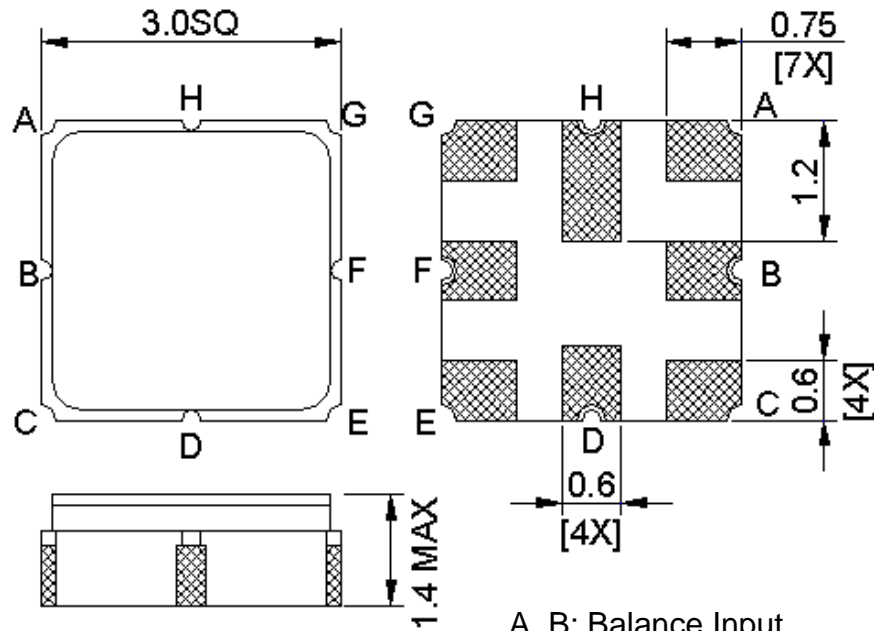
Terminating load impedance (differential): $Z_L = 200\Omega // 30nH$

Item	Unit	Min.	Typ.	Max.	Note
Center Frequency Fc	MHz	-	1176.5	-	-
Bandwidth at -3dB	MHz	-	44	-	-
Insertion Loss in 1166MHz ~ 1187MHz	dB	-	2.8	4	-
Amplitude ripple (1166MHz ~ 1187MHz)	dB	-	0.7	2	-
Group delay variation (1166MHz ~ 1187MHz)	ns	-	13	20	-
I/O Return Loss (1166MHz ~ 1187MHz)	dB	8	9	-	-
Attenuation (reference level from 0dB)					
10 ~ 930MHz	dB	45	50	-	-
1380 ~ 2000MHz	dB	44	52	-	-
2000 ~ 2400MHz	dB	38	50	-	-

SAW Filter 1176.5MHz
Part No: MP03242

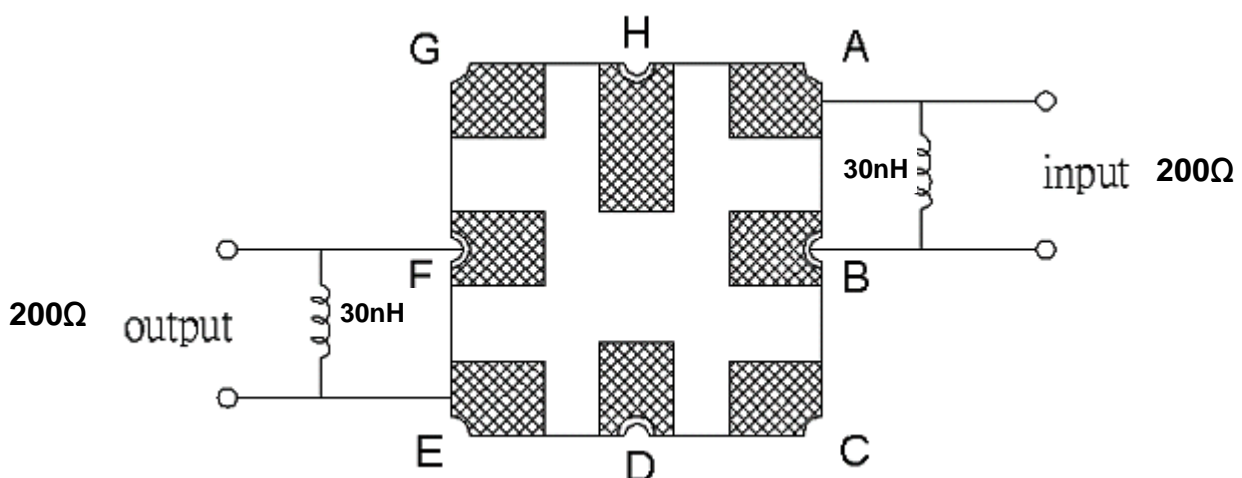
Model: TA1032A
Rev No: 1

C. OUTLINE DRAWING:



A, B: Balance Input
 E, F: Balance Output
 C, D, G, H: Ground
 Unit: mm

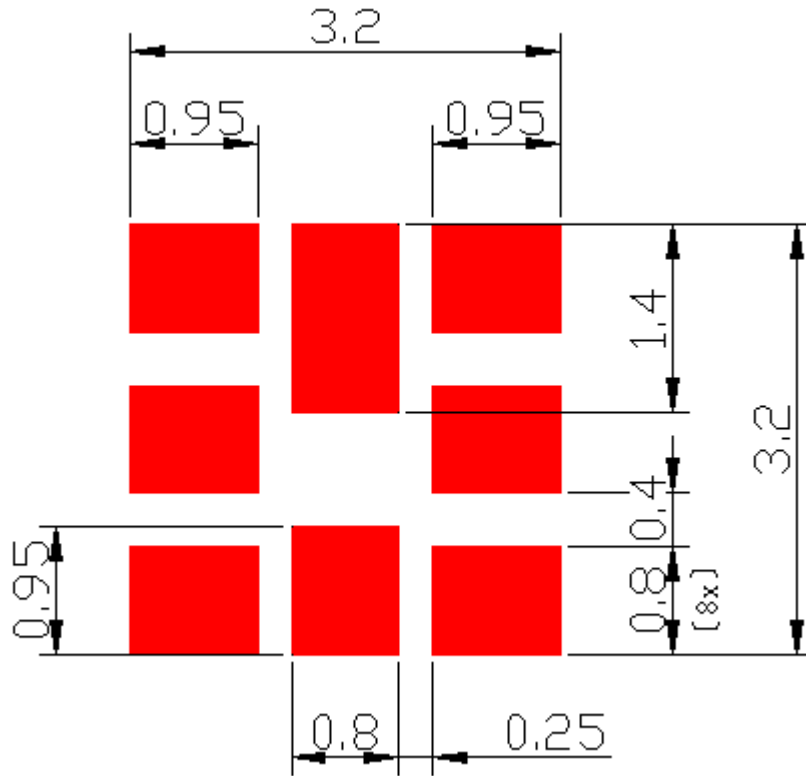
D. MEASUREMENT CIRCUIT:



SAW Filter 1176.5MHz
Part No: MP03242

Model: TA1032A
Rev No: 1

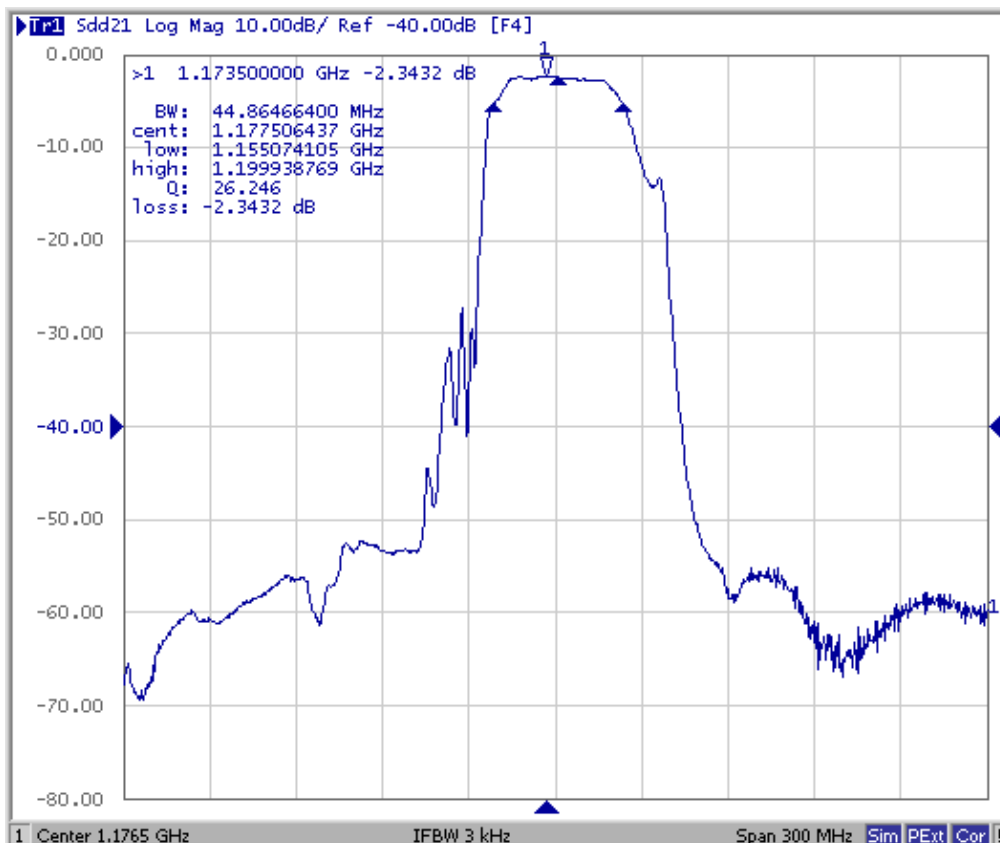
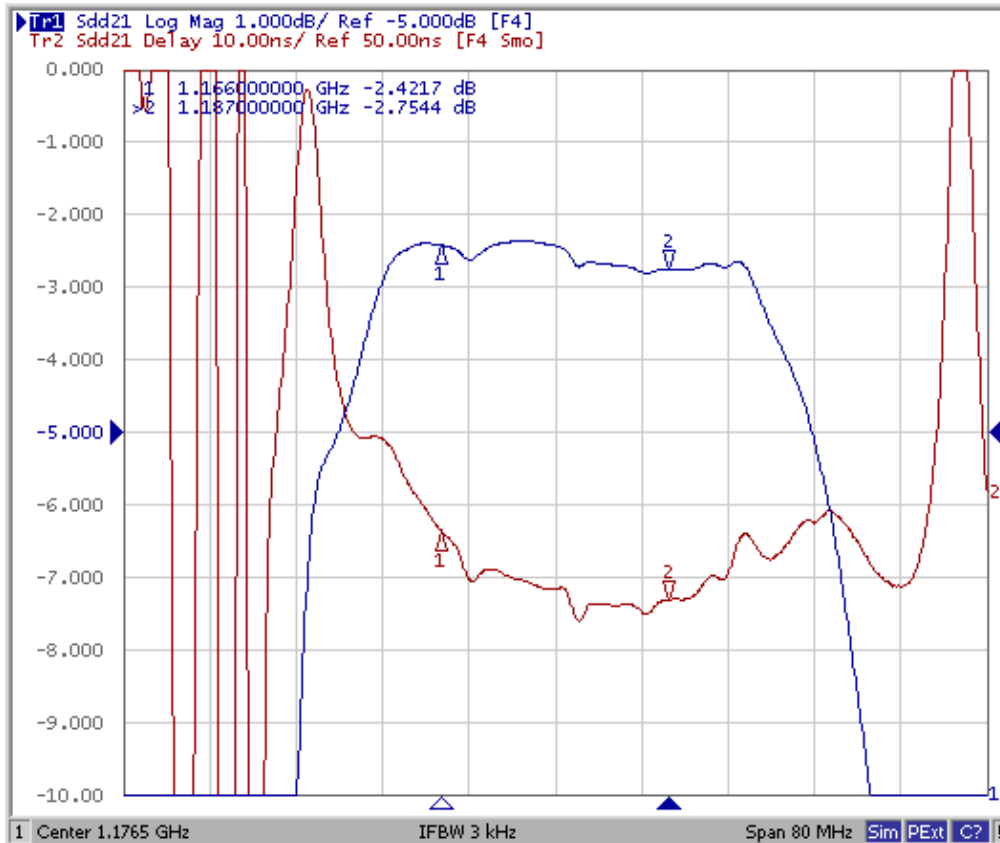
E. PCB FOOTPRINT:



SAW Filter 1176.5MHz
Part No: MP03242

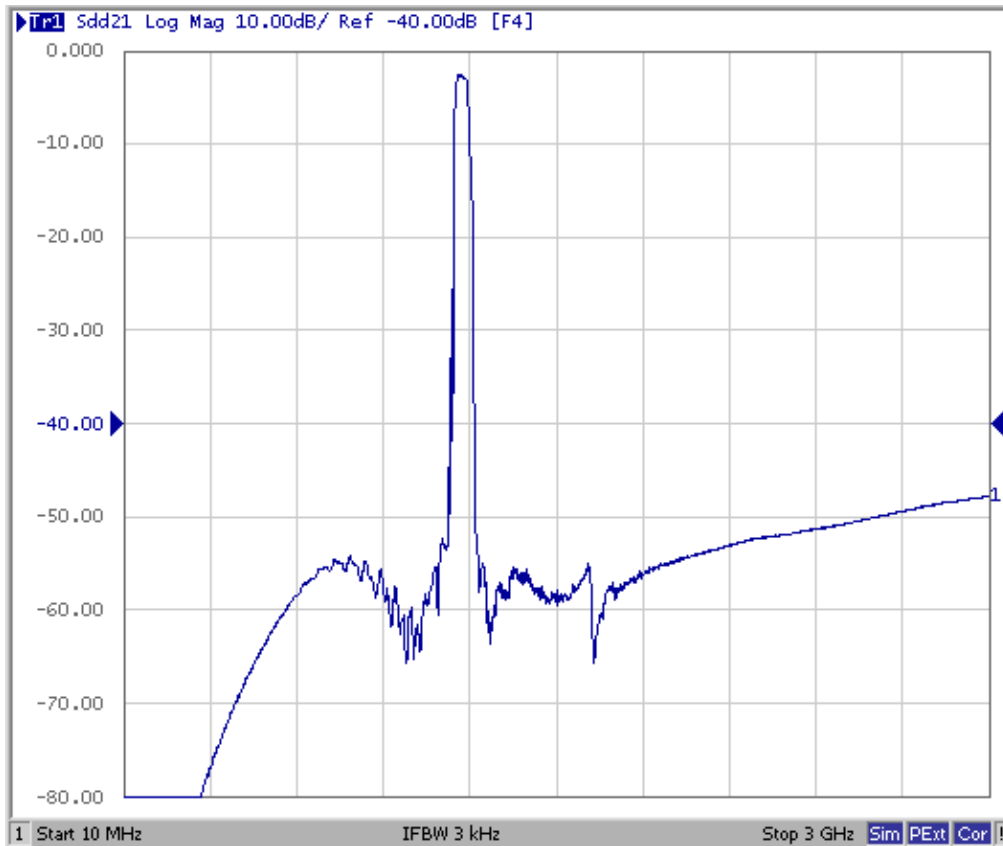
Model: TA1032A
Rev No: 1

F. FREQUENCY CHARACTERISTICS:



SAW Filter 1176.5MHz
Part No: MP03242

Model: TA1032A
Rev No: 1

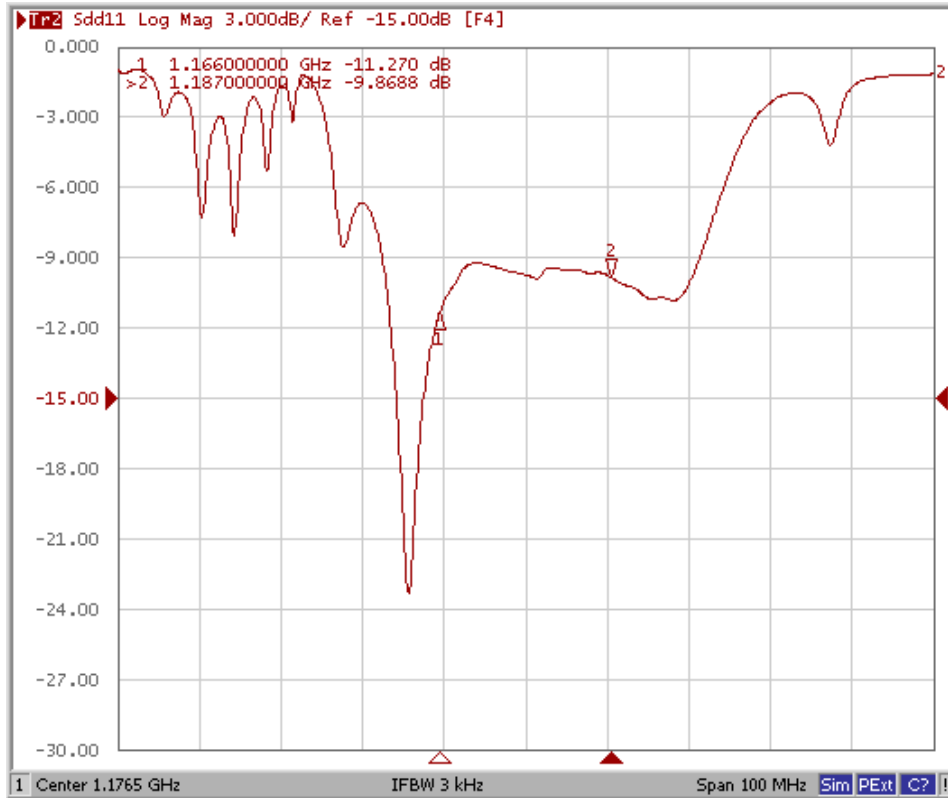


SAW Filter 1176.5MHz
Part No: MP03242

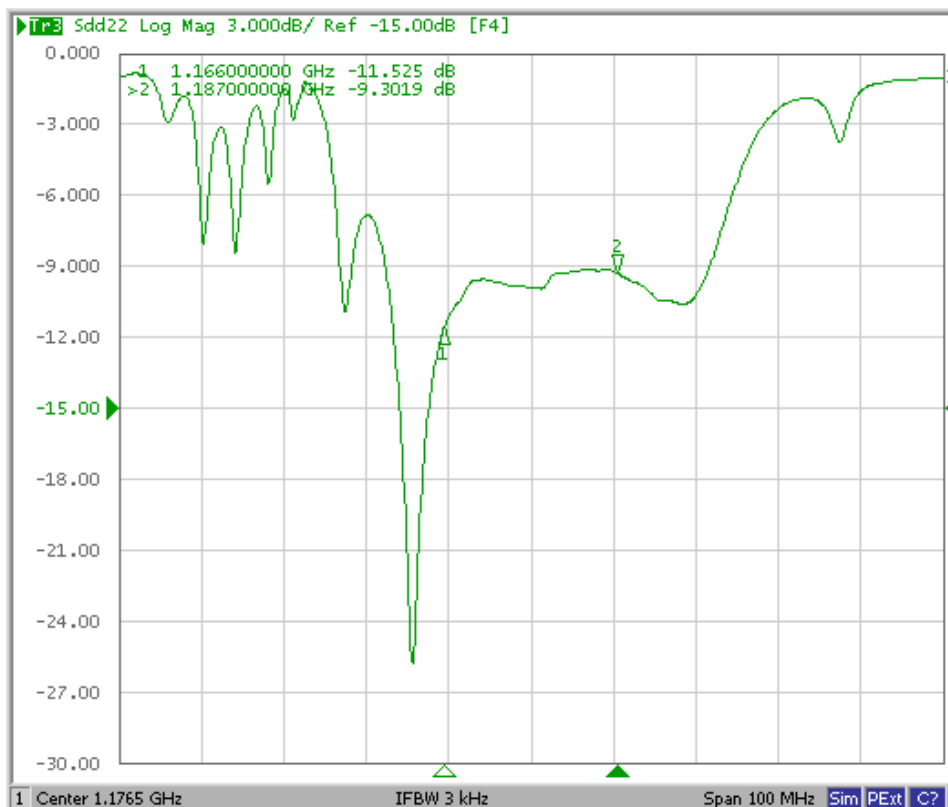
Model: TA1032A
Rev No: 1

Reflection Functions

S11



S22



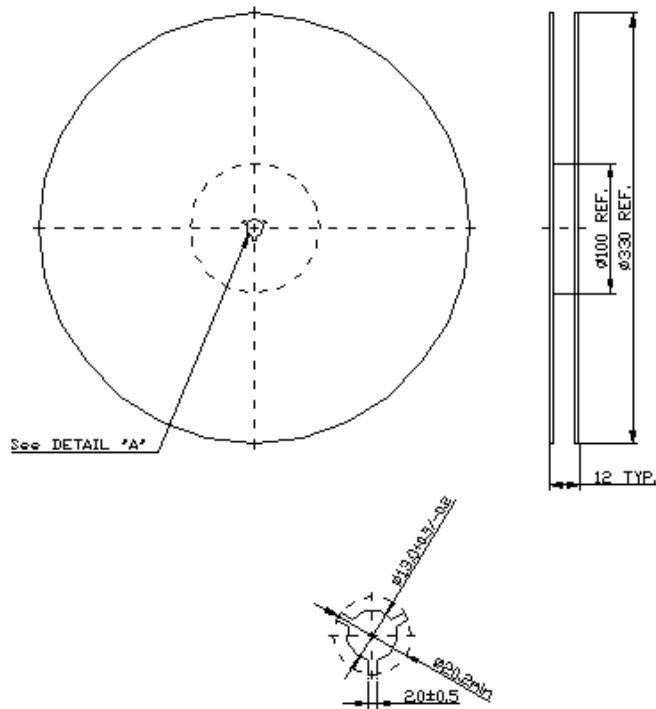
SAW Filter 1176.5MHz
Part No: MP03242

Model: TA1032A
Rev No: 1

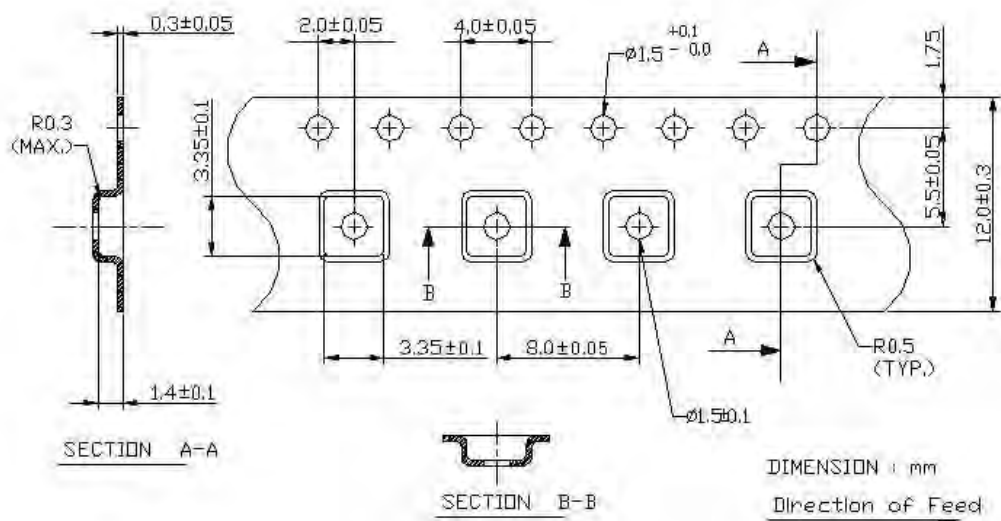
G. PACKING:

1. REEL DIMENSION

(Reel Count: 7" = 1000; 13" = 3000)



2. TAPE DIMENSION



SAW Filter 1176.5MHz
Part No: MP03242

Model: TA1032A
Rev No: 1

H. RECOMMENDED REFLOW PROFILE:

