

SAW Filter 435.0MHz
Part No: MP09266

Model: TA2209A
Rev No: 1

A. MAXIMUM RATING:

Electrostatic Sensitive Device (ESD)

1. Input Power Level: 10dBm
2. DC Voltage: 3V
3. Operating Temperature: -40°C to +85°C
4. Storage Temperature: -40°C to +85°C

B. ELECTRICAL CHARACTERISTICS:

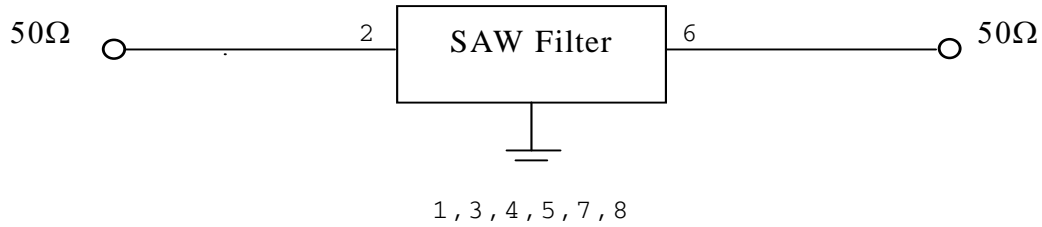
Item	Unit	Min.	Typ.	Max.
Center frequency Fc	MHz	-	435	-
Insertion Loss (433 ~ 437MHz) IL	dB	-	2.1	4.2
Amplitude Variation (433 ~ 437MHz)	dB	-	0.2	2.8
Bandwidth BW -3dB	MHz	4	8	10
Group delay variation (433 ~ 437MHz)	ns	-	77	180
Return loss (433 ~ 437MHz)	dB	6.5	16	-
Attenuation (Reference level from 0dB)				
10 ~ 385MHz	dB	45	65	-
385 ~ 425MHz	dB	22	45	-
445 ~ 485MHz	dB	22	36	-
485 ~ 1000MHz	dB	45	53	-
Temperature coefficient of frequency	ppm/k	-	-36	-

SAW Filter 435.0MHz
Part No: MP09266

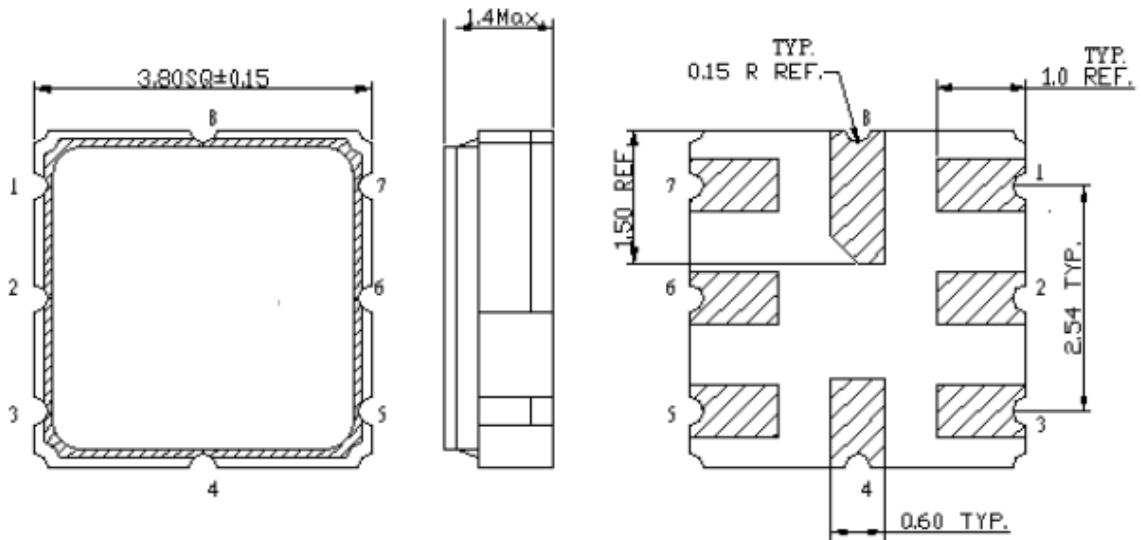
Model: TA2209A
Rev No: 1

C. MEASUREMENT CIRCUIT:

HP Network analyzer

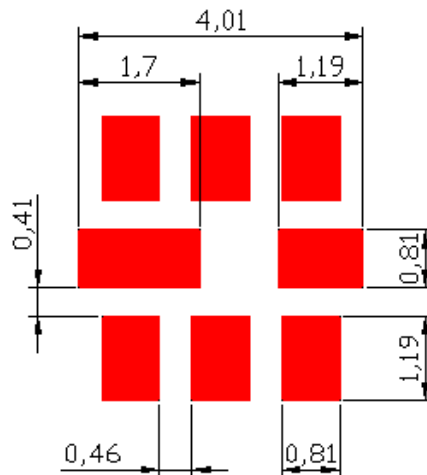


D. OUTLINE DRAWING:



- 2: Input
- 6: Output
- 1, 3, 4, 5, 7, 8: Ground
- Unit: mm

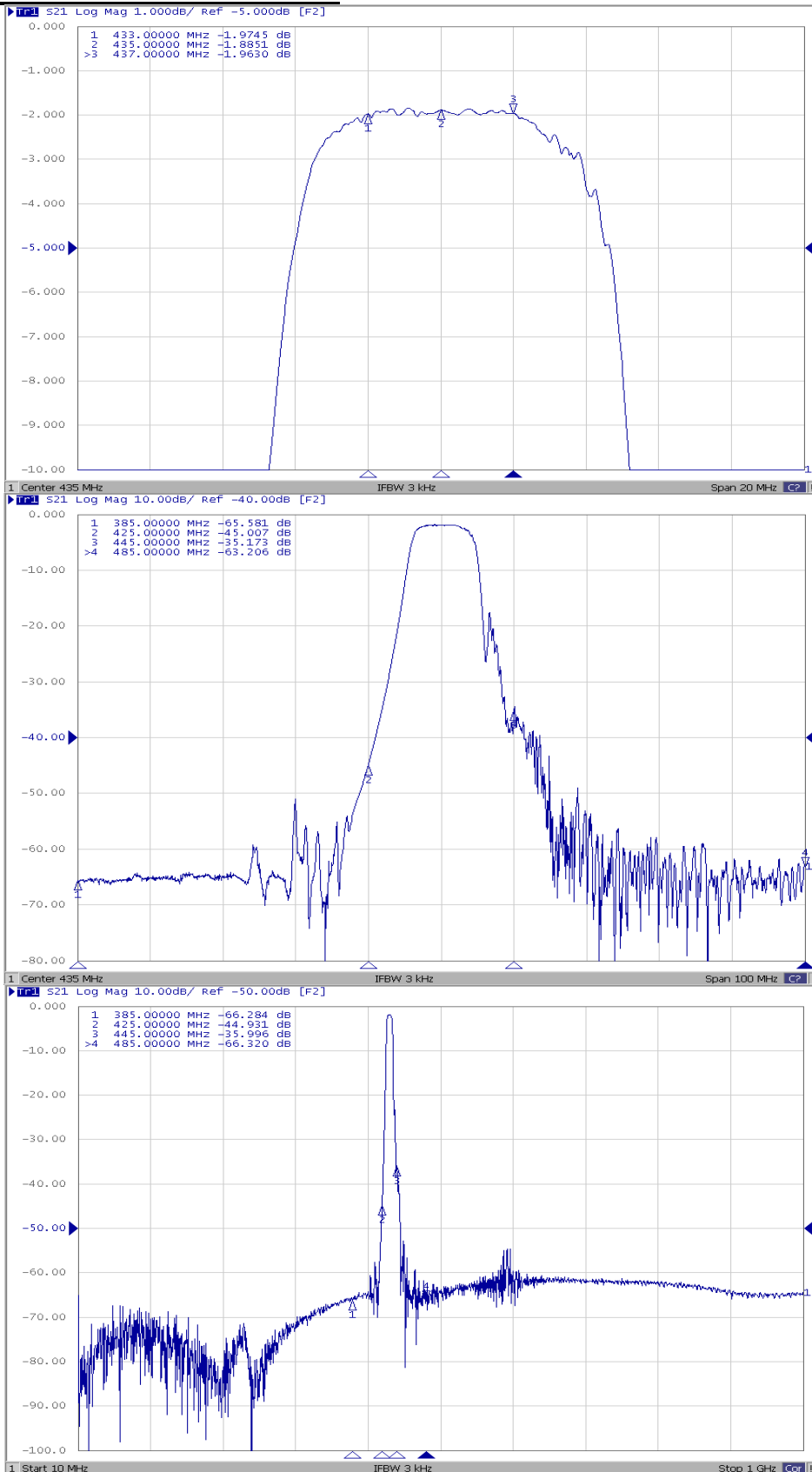
E. PCB FOOTPRINT:



SAW Filter 435.0MHz
Part No: MP09266

Model: TA2209A
Rev No: 1

F. FREQUENCY CHARACTERISTICS:

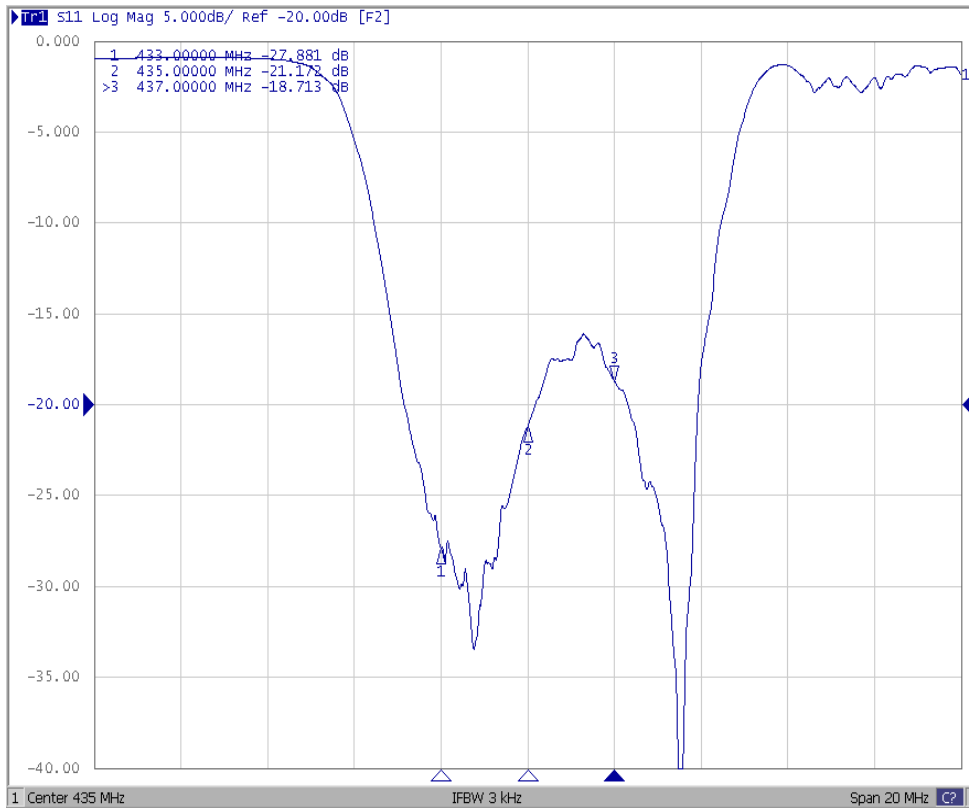


SAW Filter 435.0MHz
Part No: MP09266

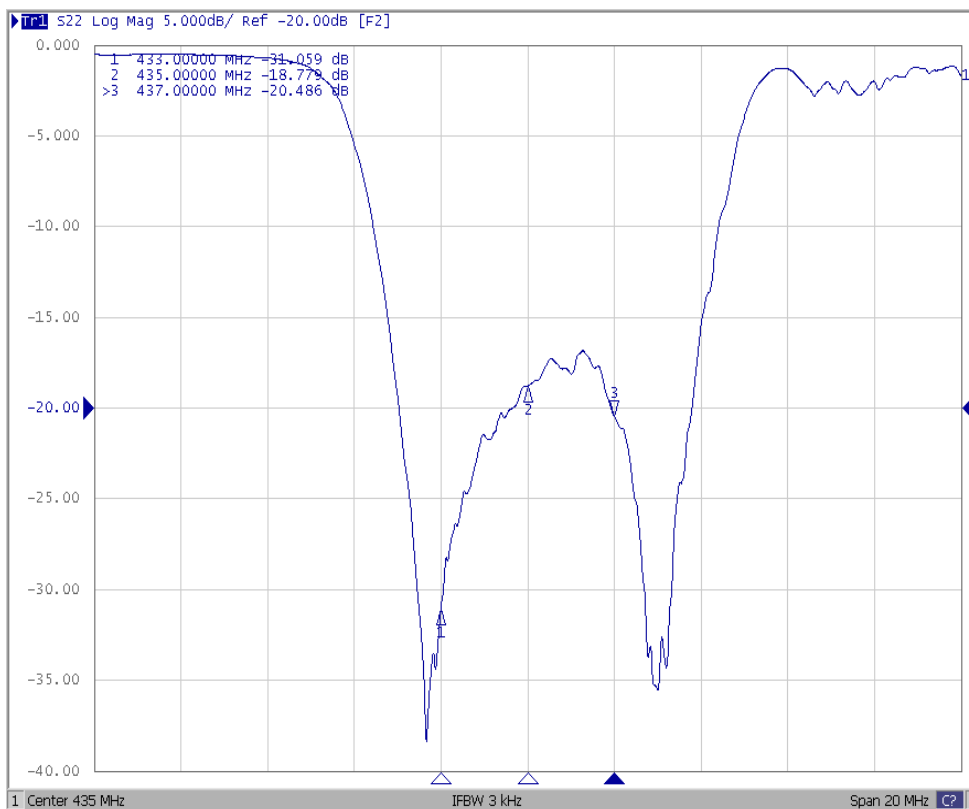
Model: TA2209A
Rev No: 1

Reflection Functions

S11



S22

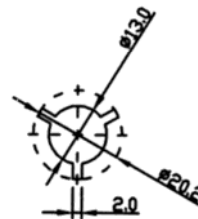
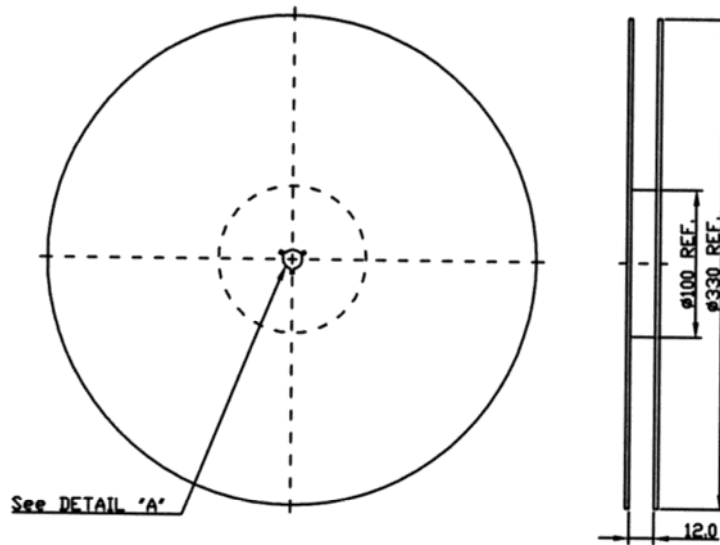


SAW Filter 435.0MHz
Part No: MP09266

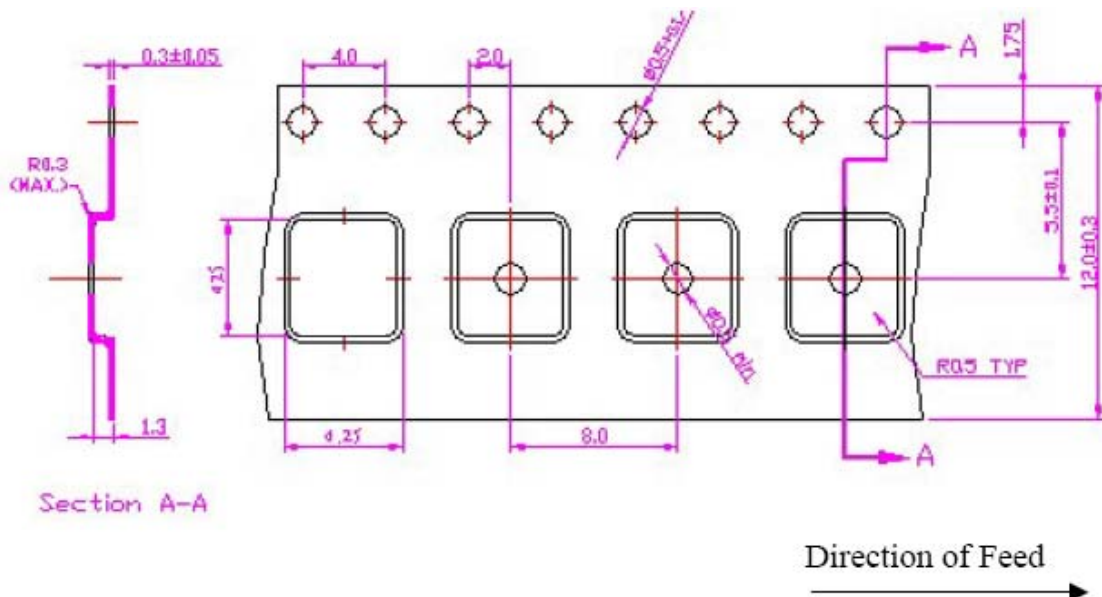
Model: TA2209A
Rev No: 1

G. PACKING:

1. Reel Dimension



2. Tape Dimension



SAW Filter 435.0MHz
Part No: MP09266

Model: TA2209A
Rev No: 1

H. RECOMMENDED REFLOW PROFILE:

1. Preheating shall be fixed at 150 ~ 180°C for 60 ~ 90 seconds.
2. Ascending time to preheating temperature 150°C shall be 30 seconds min.
3. Heating shall be fixed at 220°C for 50 ~ 80 seconds and at 260°C +0/-5°C peak (20 ~ 40 sec).
4. Time: 2 times.

