

433.42MHz SAW Filter
Part No: MA05993

Model: TB0128A
REV NO.: 3

A. MAXIMUM RATING:

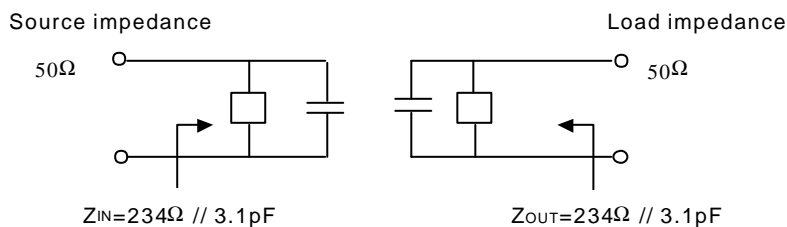
1. Input Power Level: 0 dBm
2. DC voltage: 12 V
3. Operating Temperature: -40°C to +85°C
4. Storage Temperature: -40°C to +85°C

B. ELECTRICAL CHARACTERISTICS:

Item	Min.	Typ.	Max.	Note
Center frequency F_c (MHz)	433.3	433.42	433.62	1
Minimum I.L. (433.3~433.62 MHz) (dB) IL_{min}	-	3.0	5.0	
Pass band (relative to IL_{min})				
433.26~433.58 MHz (dB)	-	-	2.0	1
433.24~433.60 MHz (dB)	-	-	3.0	
433.18~433.66 MHz (dB)	-	-	6.0	
Pass bandwidth (relative to IL_{min}) BW_3 (KHz)	500	650	750	
Attenuation:(relative to IL_{min}) (dB)				
413.5~427.5 MHz (dB)	40	43	-	1
427.5~432.34 MHz (dB)	15	26	-	
434.42~441.5 MHz (dB)	10	16	-	
441.5~549.5 MHz (dB)	33	38	-	
Impedance at F_c ; Input $Z_{IN}=R_{IN}/C_{IN}$ Output $Z_{OUT}=R_{OUT}/C_{OUT}$	234Ω // 3.1 pF 234Ω // 3.1 pF			2
Turnover T_o (deg.C)	25 typ.			

Note1. The standard definitions is in JIS C 6703

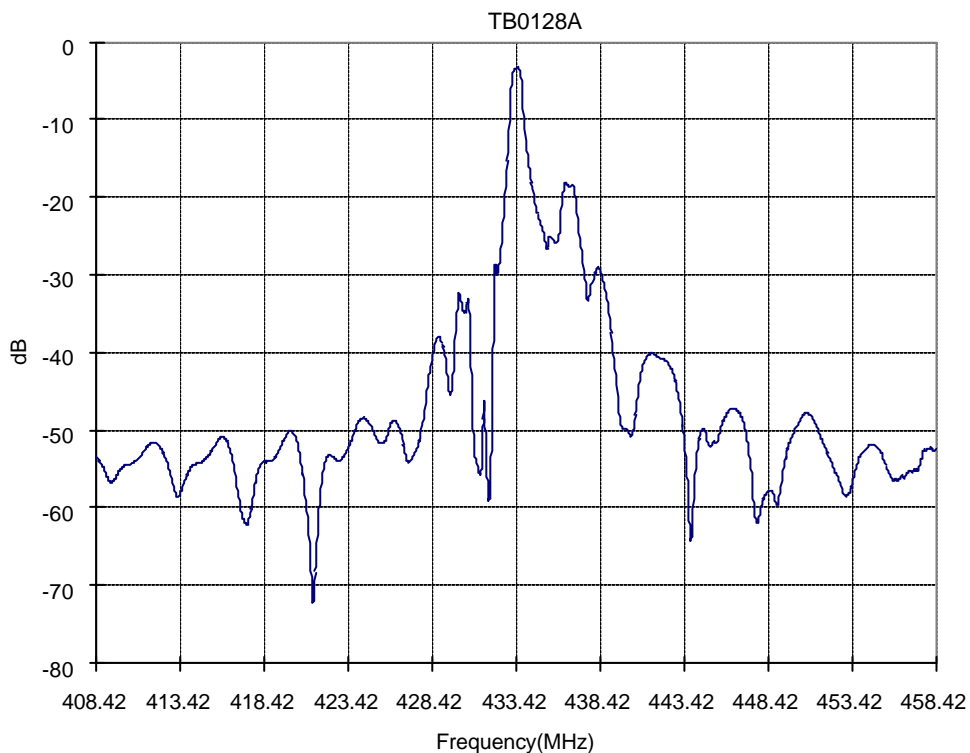
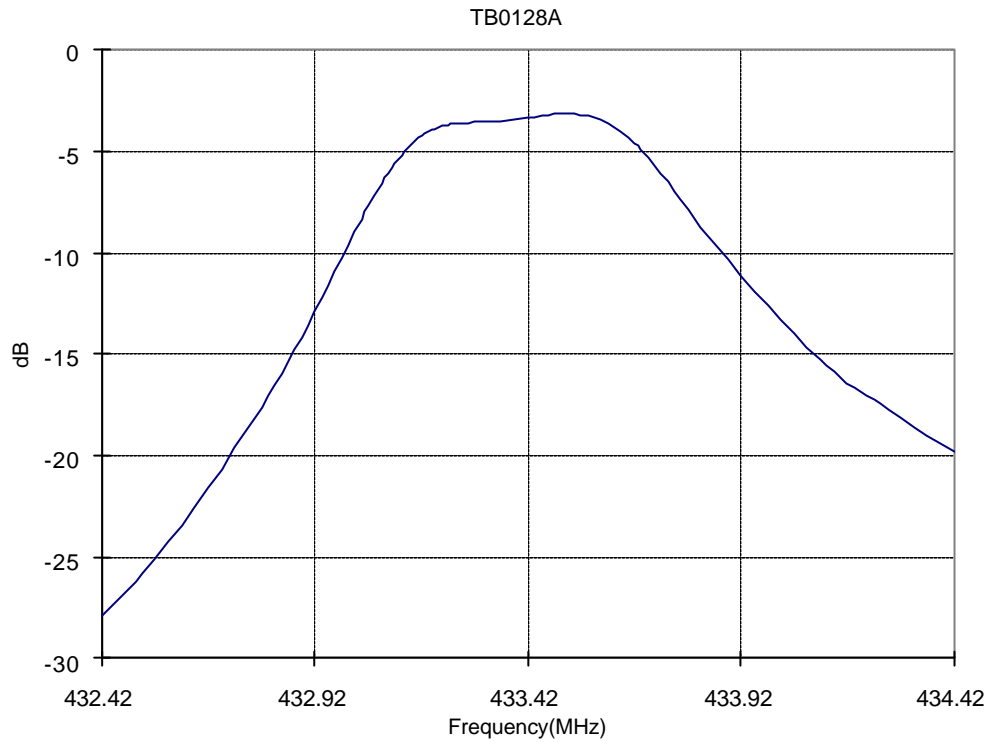
Note2.



433.42MHz SAW Filter
Part No: MA05993

Model: TB0128A
REV NO.: 3

C. FREQUENCY CHARACTERISTICS:

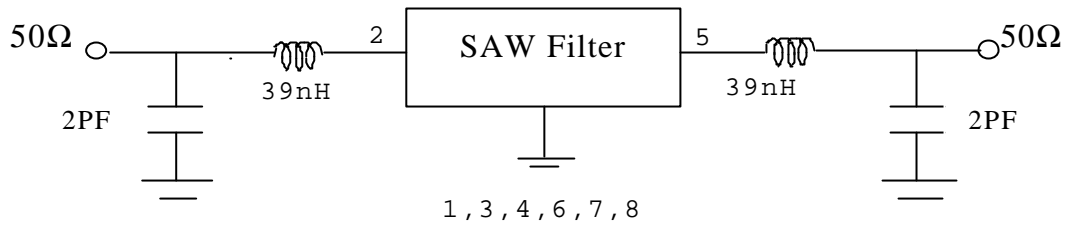


433.42MHz SAW Filter
Part No: MA05993

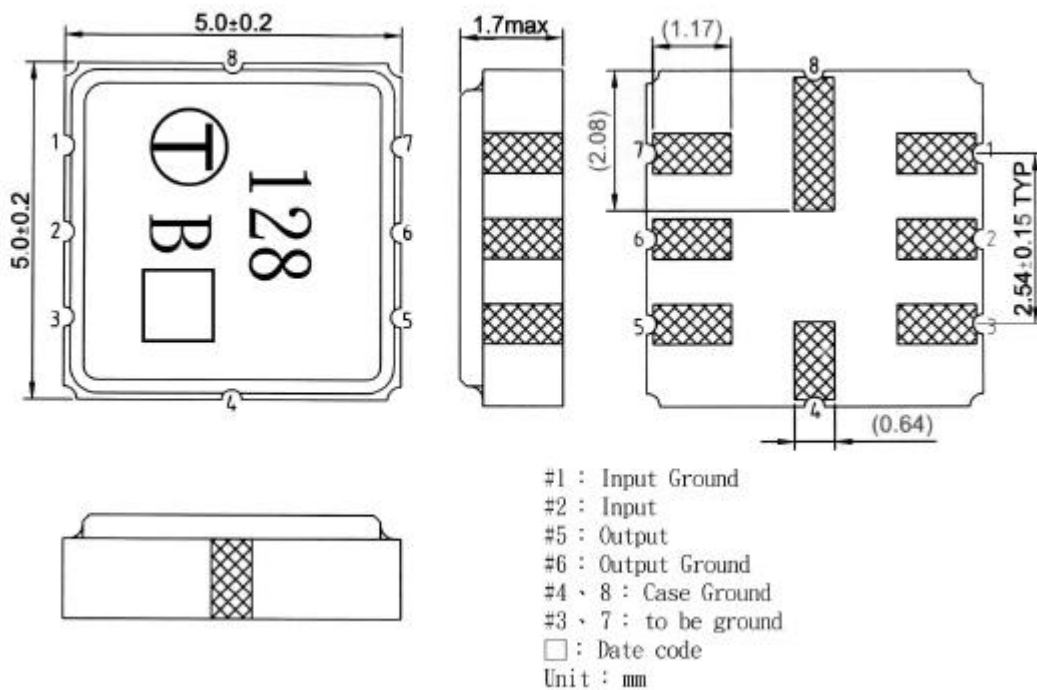
Model: TB0128A
REV NO.: 3

D. MEASUREMENT CIRCUIT:

HP Network analyzer



E. OUTLINE DRAWING:

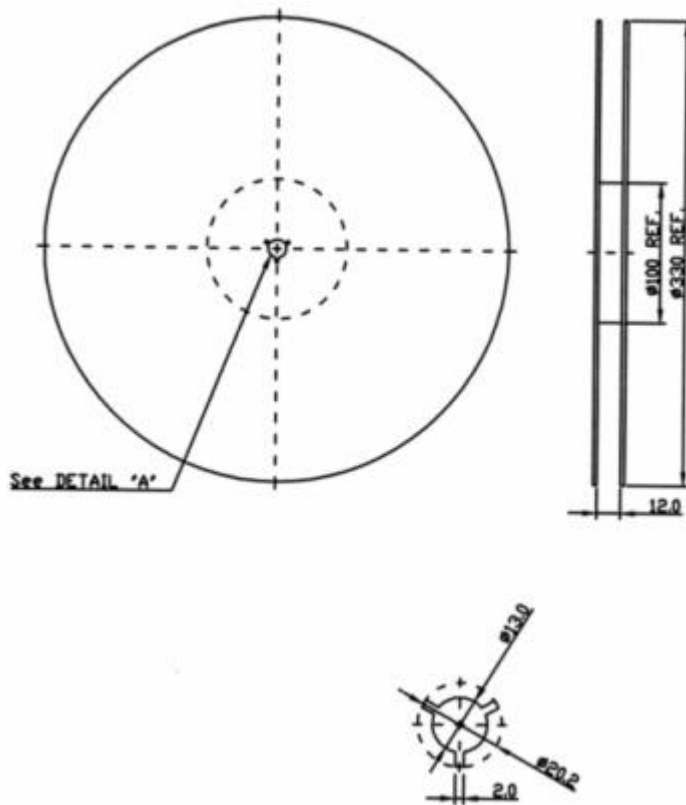


433.42MHz SAW Filter
Part No: MA05993

Model: TB0128A
REV NO.: 3

F. PACKING:

1. REEL DIMENSION



2. TAPE DIMENSION

