

SAW Filter 140.0MHz

Model: TB0390A

Part No: MP01469

REV. NO.: 1

A. MAXIMUM RATING:

1. Operating Temperature: -40 °C ~ +85 °C
2. Storage Temperature: -40 °C ~ +85 °C
3. Input Power Level: 10dBm

B. CHARACTERISTICS:

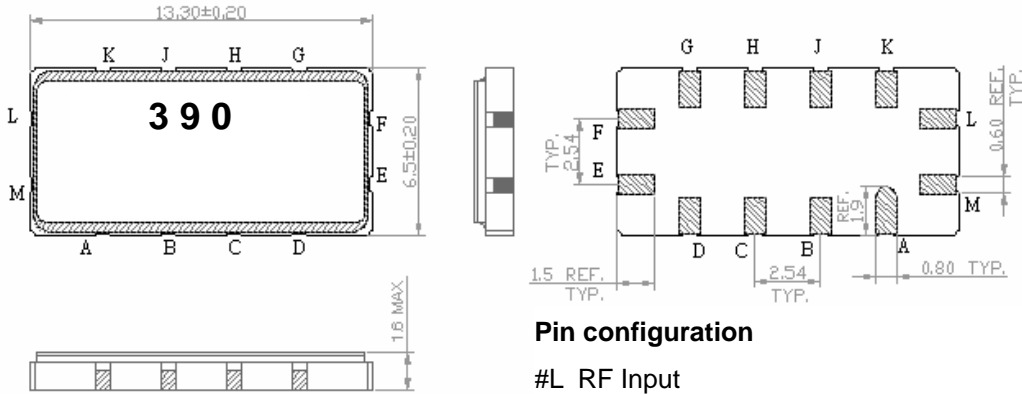
1. Ambient Temperature: 25°C

Characteristics	Value			Note.
	Min.		Max.	
Center frequency F_c MHz	139.75	140.0	140.25	-
Maximum Insertion loss I.L. dB	-	10.7	14.0	-
1dB Bandwidth MHz	5.50	5.87	-	-
3dB Bandwidth MHz	-	6.73	-	-
40dB Bandwidth MHz	-	9.98	11.00	-
Passband Ripple ($F_c \pm 2.3\text{MHz}$) MHz	-	0.73	1.20	-
Group Delay Ripple ($F_c \pm 2.3\text{MHz}$) nS	-	70	100	-
Group Delay at F_c uS	-	0.93	1.00	-
Phase linearity at ($F_c \pm 2.3\text{MHz}$) P-P Deg	-	8.0	15.0	-
Temp Coefficient ppm/°C	-	-25	-	-
Attenuation:(Reference level from minimum insertion loss)				
1) DC ~ 123 MHz dB	40	45	-	-
2) 157MHz ~ 400 MHz dB	42	48	-	-
2) 400MHz ~ 500 MHz dB	25	46	-	-

SAW Filter 140.0MHz
Part No: MP01469

Model: TB0390A
REV. NO.: 1

C. OUTLINE DRAWING:



Pin configuration

- #L RF Input
- #M RF Input ground
- #E RF Output
- #F RF Output ground
- #A,B,C,D,G,H,J,K To be ground

SAW Filter 140.0MHz

Model: TB0390A

Part No: MP01469

REV. NO.: 1

D. FREQUENCY CHARACTERISTICS:

1. S21 Response

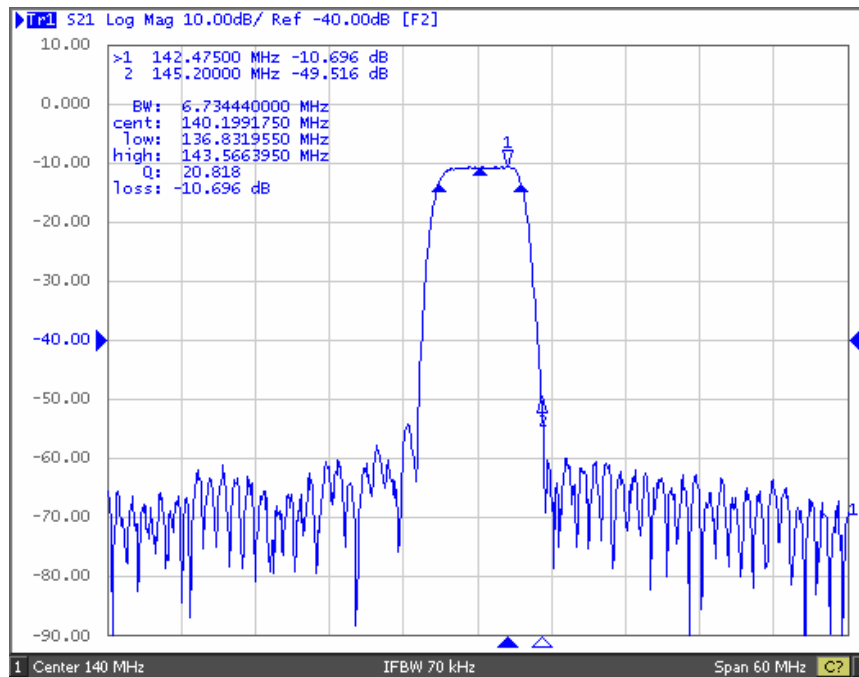


Fig1. Horizontal: 6MHz/Div Vertical: 10dB/Div

2. Pass band Ripple and Group Delay Ripple

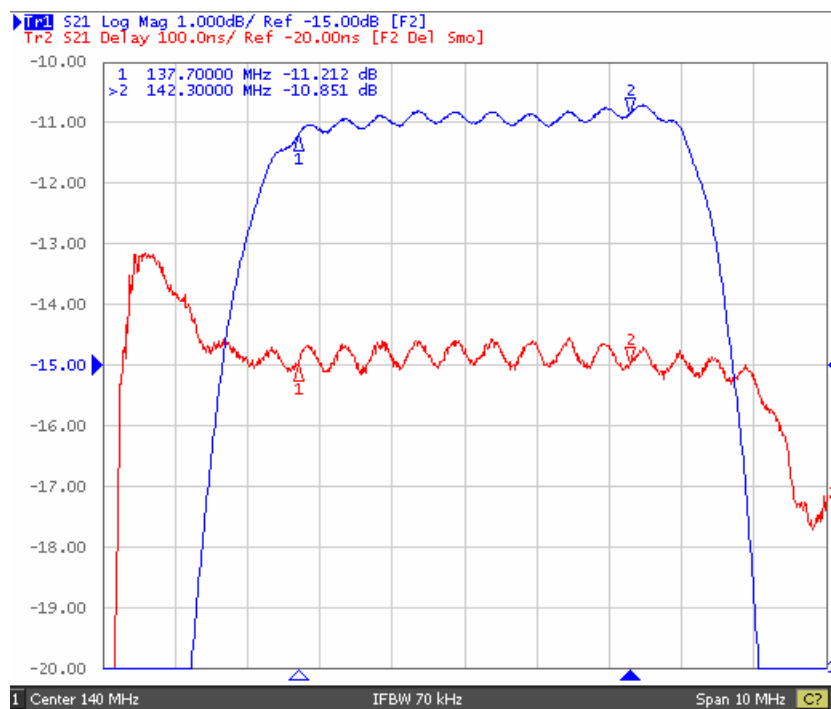


Fig2. Horizontal: 1MHz/Div; Vertical: 1dB/Div, Vertical: 100nS

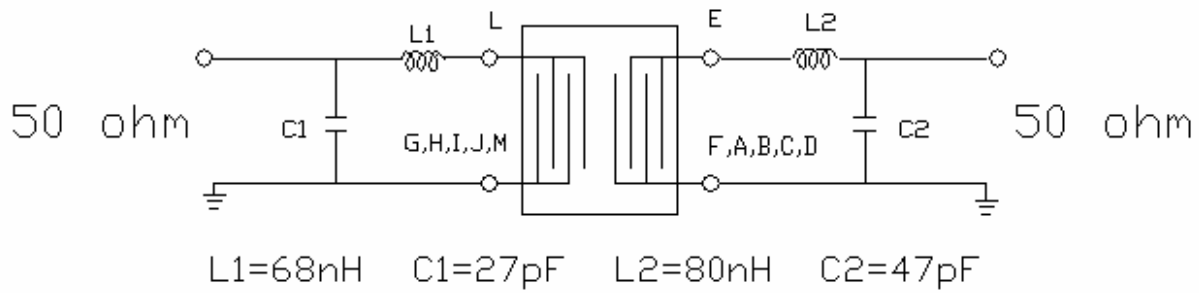
SAW Filter 140.0MHz

Model: TB0390A

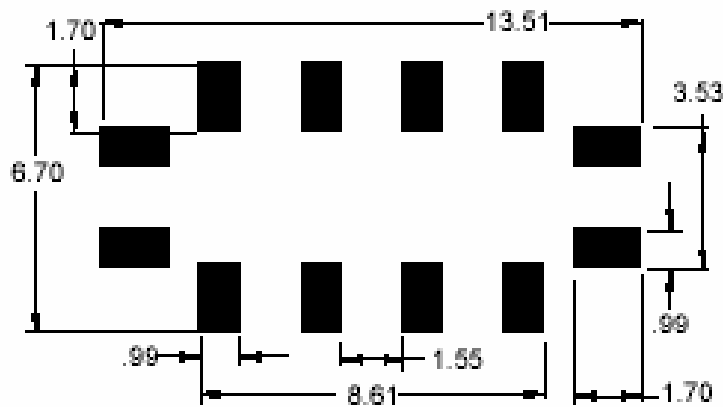
Part No: MP01469

REV. NO.: 1

E. TEST FIXTURE:



F. PCB FOOTPRINT:

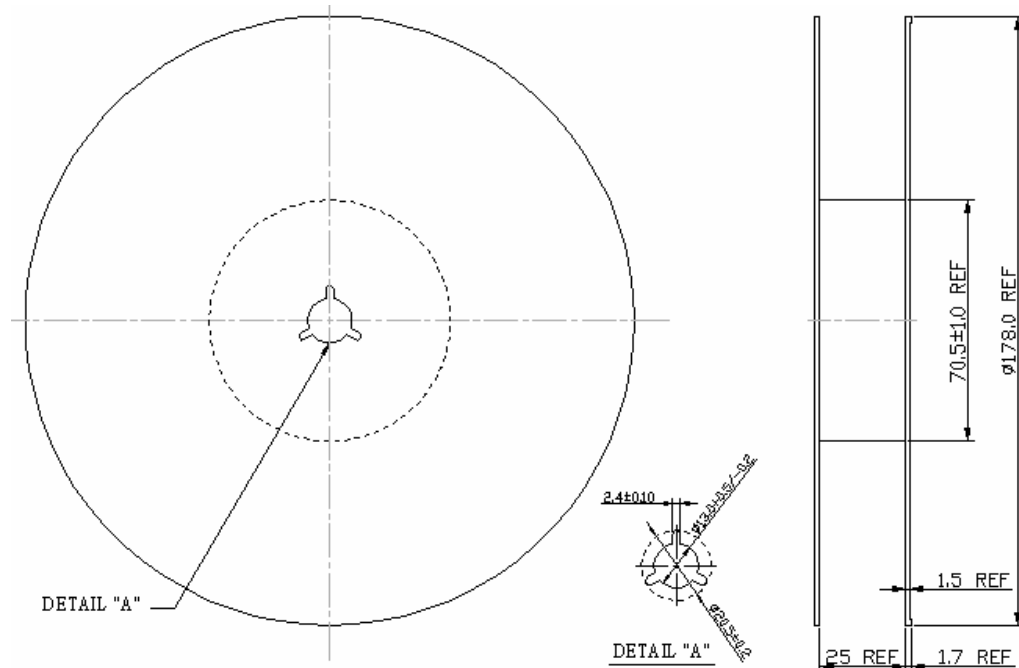


SAW Filter 140.0MHz
Part No: MP01469

Model: TB0390A
REV. NO.: 1

G. PACKING:

1. REEL DIMENSION



2. TAPE DIMENSION

