

SAW Filter 209.715MHz
Part No: MP03189

Model: TB0836A
Rev No: 1

A. MAXIMUM RATING:

1. Operating Temperature: -20°C ~ +70°C
2. Storage Temperature: -40°C ~ +85°C
3. Input power: 10dBm

B. CHARACTERISTICS:

Ambient Temperature: 25°C

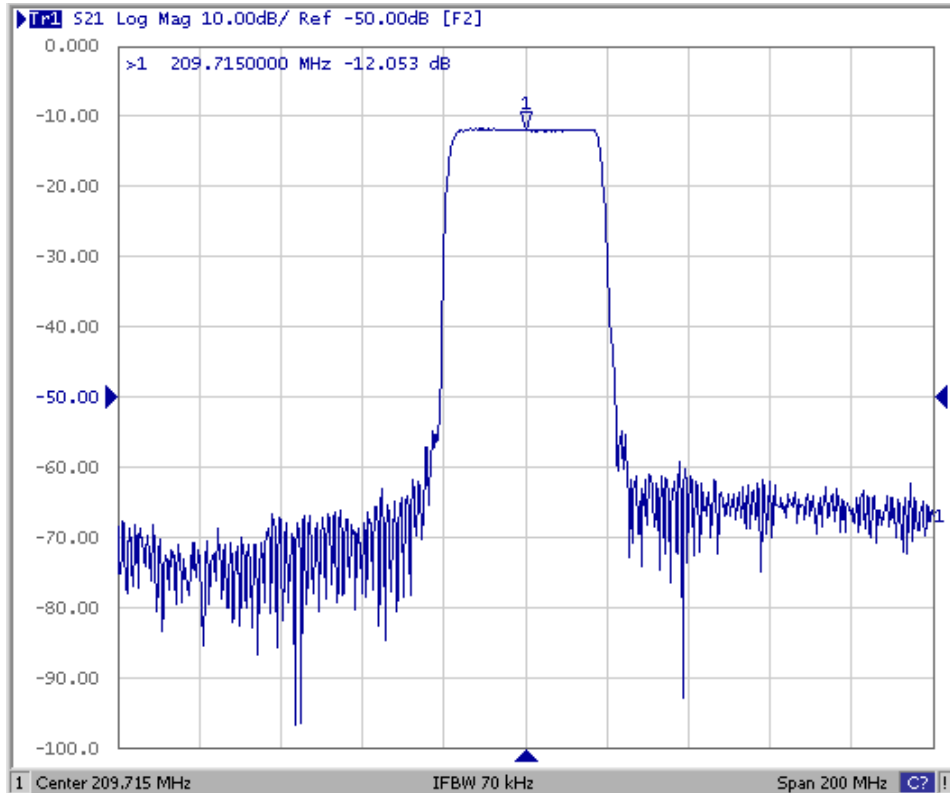
Characteristics	Value			Note
	Min.	Typ.	Max.	
Center frequency Fc MHz	-	209.715	-	-
Minimum Insertion loss IL dB	-	11.8	13	-
1dB BW MHz	-	34.9	-	
3dB BW MHz	-	36.6	-	
35dB BW MHz	-	42.6	-	
Passband Ripple (Fc ± 15MHz) dB	-	0.4	1.0	-
Attenuation (Reference to Minimum Insertion loss)				
10 ~ 130MHz dB	45	56	-	-
130 ~ 179MHz dB	40	52	-	-
239 ~ 269MHz dB	40	47	-	
269 ~ 284MHz dB	45	51	-	
284 ~ 1000MHz dB	40	45	-	
Temp Coefficient ppm/K	-	-94	-	-
Matching: 1. The input of the filter will be matched to 50Ω 2. The output of the filter will be matched to 50Ω				

SAW Filter 209.715MHz
Part No: MP03189

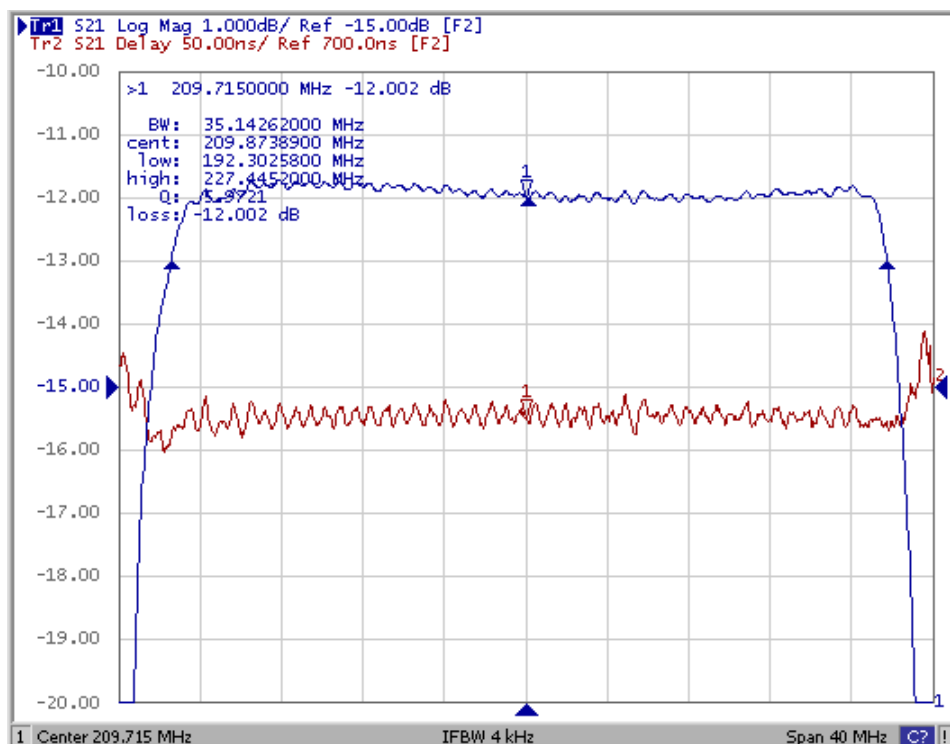
Model: TB0836A
Rev No: 1

C. FREQUENCY CHARACTERISTICS:

1. S21 Response: (span: 200MHz)



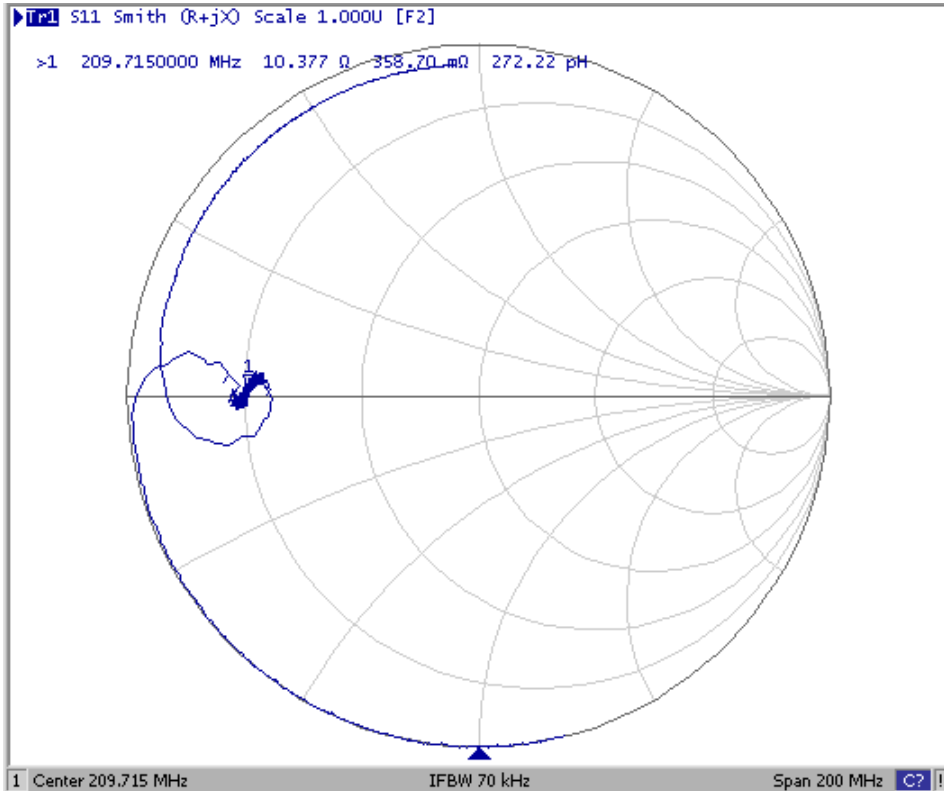
2. Group-Delay Ripple: (span: 40MHz)



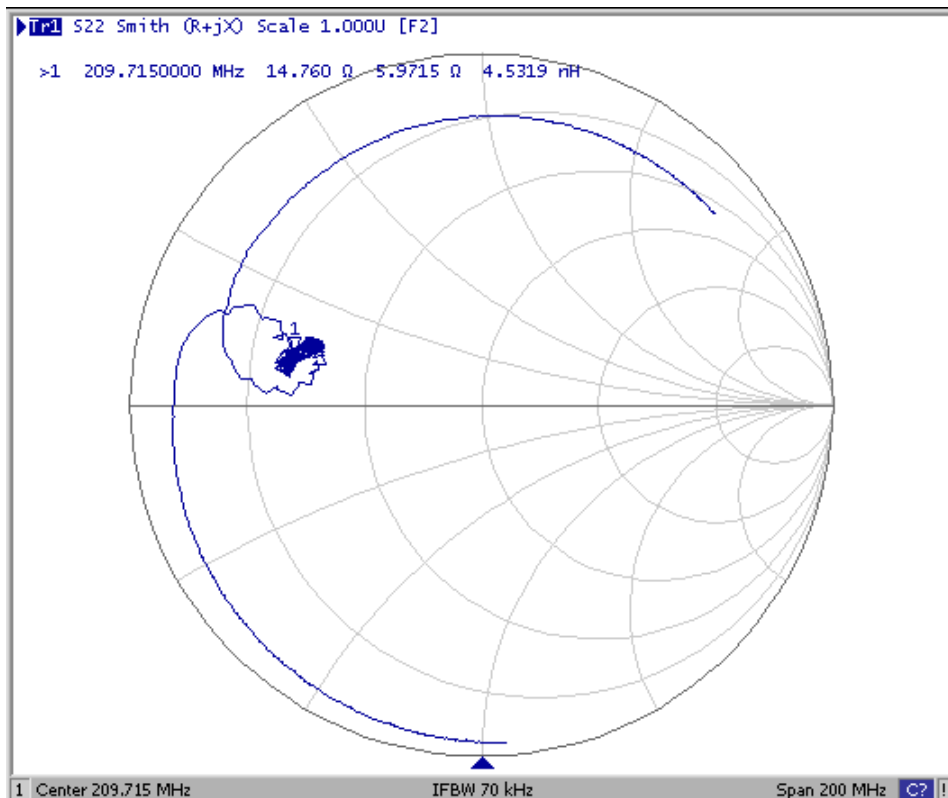
SAW Filter 209.715MHz
Part No: MP03189

Model: TB0836A
Rev No: 1

3. S11 Smith Chart: (span: 200MHz)



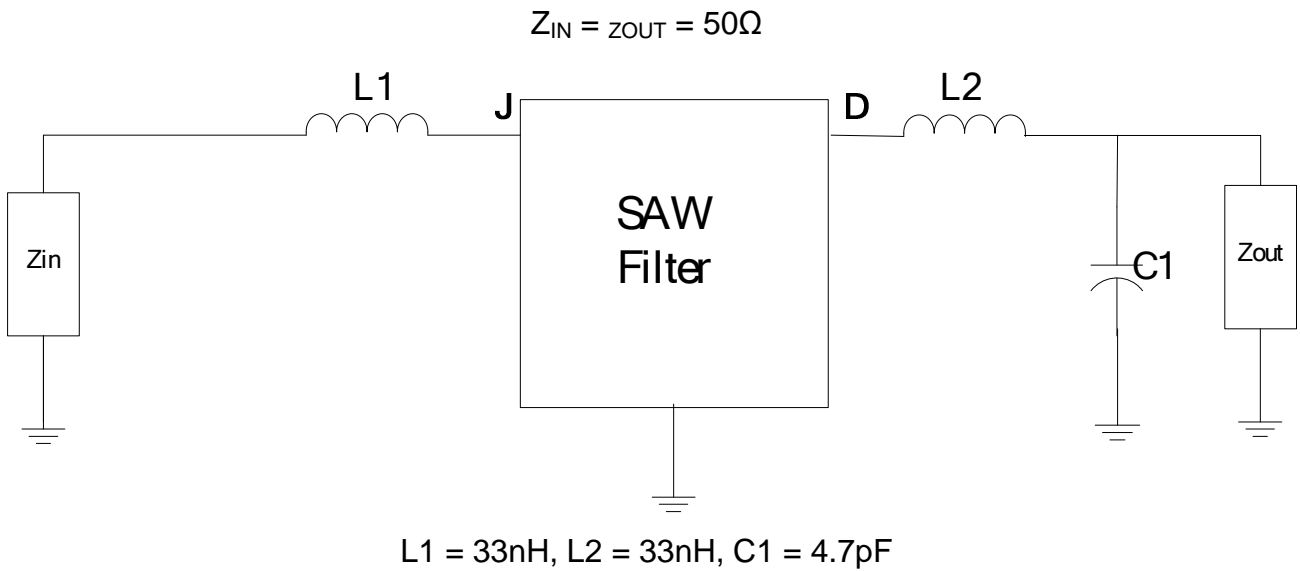
4. S22 Smith Chart (span: 200MHz)



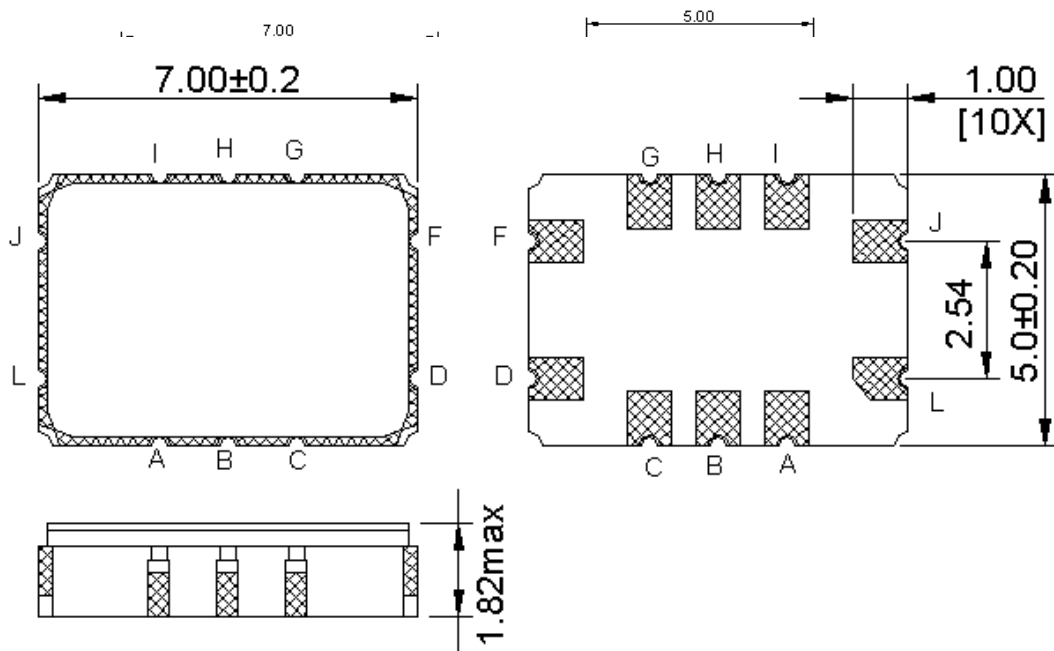
SAW Filter 209.715MHz
Part No: MP03189

Model: TB0836A
Rev No: 1

E. MEASUREMENT CIRCUIT:



F. OUTLINE DRAWING:

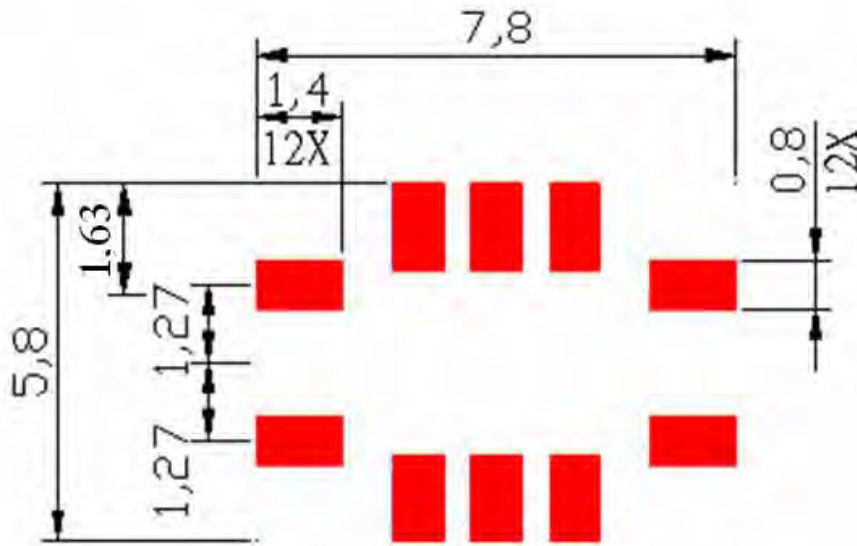


J: input
 D: output
 Pin A, B, C, F, G, H, I, L: To be Ground

SAW Filter 209.715MHz
Part No: MP03189

Model: TB0836A
Rev No: 1

G. PCB FOOTPRINT:



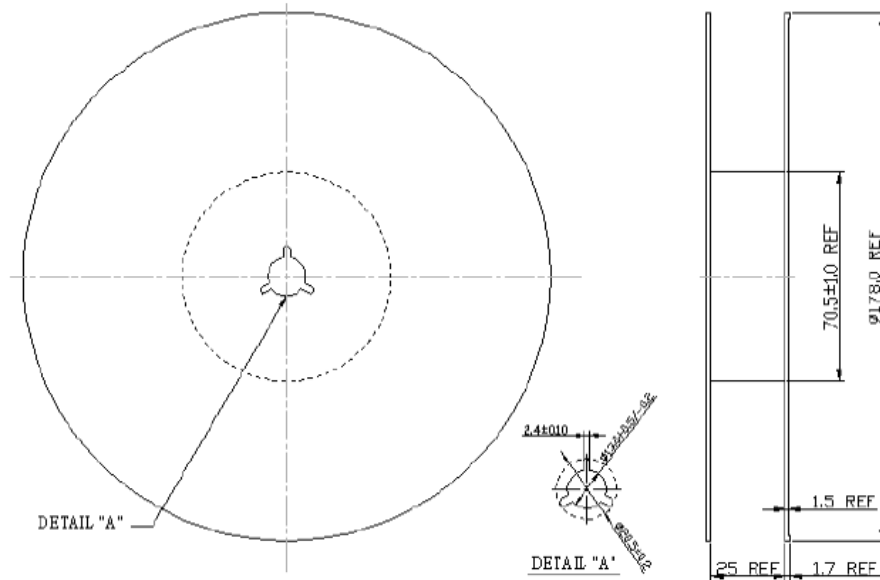
Unit: mm

SAW Filter 209.715MHz
Part No: MP03189

Model: TB0836A
Rev No: 1

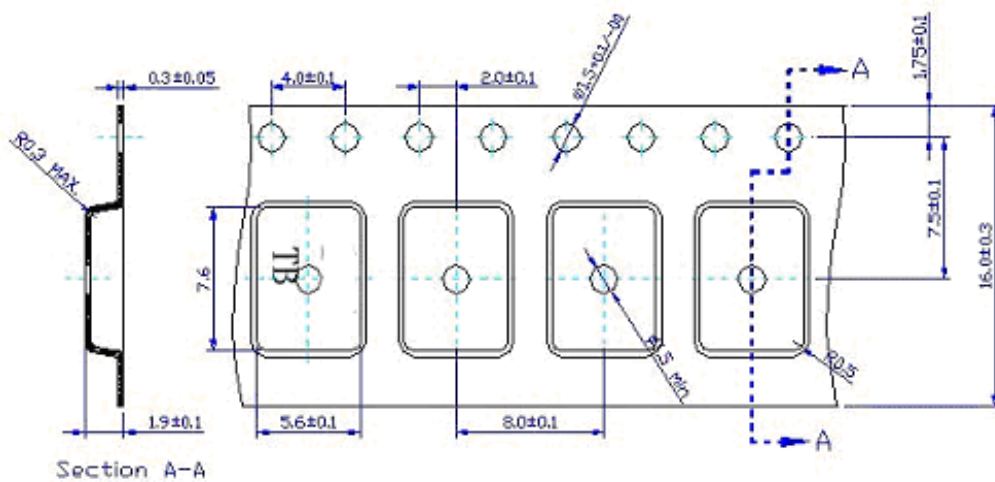
H. PACKING:

1. REEL DIMENSION



Unit: mm

2. TAPE DIMENSION



Unit: mm

SAW Filter 209.715MHz
Part No: MP03189

Model: TB0836A
Rev No: 1

I. RECOMMENDED REFLOW PROFILE:

