

SAW Filter 204.80MHz
Part No: MP03440

Model: TB0983A
Rev No: 1

A. MAXIMUM RATING:

1. Input Power Level: 10dBm
2. DC voltage: 3V
3. Operating Temperature: -25°C to +60°C
4. Storage Temperature: -30°C to +70°C

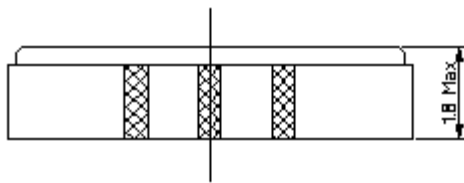
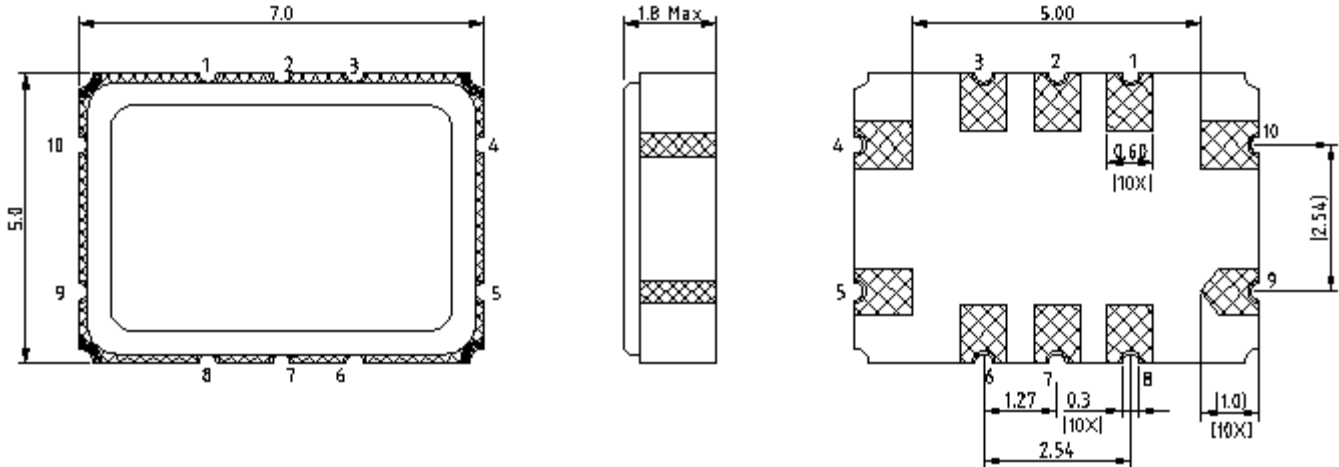
B. ELECTRICAL CHARACTERISTICS:

Item	Unit	Min.	Typ.	Max.	Note
Center frequency Fc	MHz	-	204.8	-	-
Minimum Insertion Loss (Fc ± 25kHz) IL	dB	-	2.6	6	-
Passband Ripple (Fc ± 25kHz)	dB		0.1	1	-
Group delay ripple (Fc ± 25kHz) GD	µs	-	0.4	2	-
Attenuation: (Reference level from min IL)					
Fc -115 to Fc -1MHz	dB	50	60	-	-
Fc -1 to Fc -0.6MHz	dB	42	55	-	-
Fc -0.6 to Fc -0.4MHz	dB	29	70	-	-
Fc +0.4 to Fc +0.6MHz	dB	29	70	-	-
Fc +0.6 to Fc +1MHz	dB	42	50	-	-
Fc +1 to Fc +115MHz	dB	50	55	-	-
Temperature coefficient of frequency TCf	-0.033 ppm/C ²				

SAW Filter 204.80MHz
Part No: MP03440

Model: TB0983A
Rev No: 1

C. OUTLINE DRAWING:

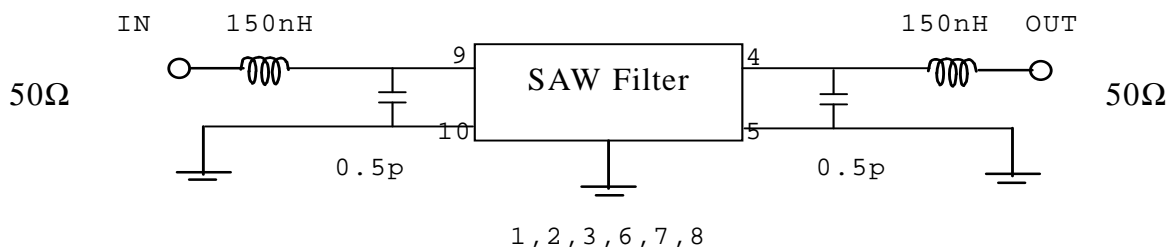


- 9: Input
- 4: Output
- 10: Balance input or input ground
- 5: Balance output or output ground
- 1, 2, 3, 6, 7, 8: To be grounded

D. MEASUREMENT CIRCUIT:

50Ohm Test circuit (single-ended / single-ended)

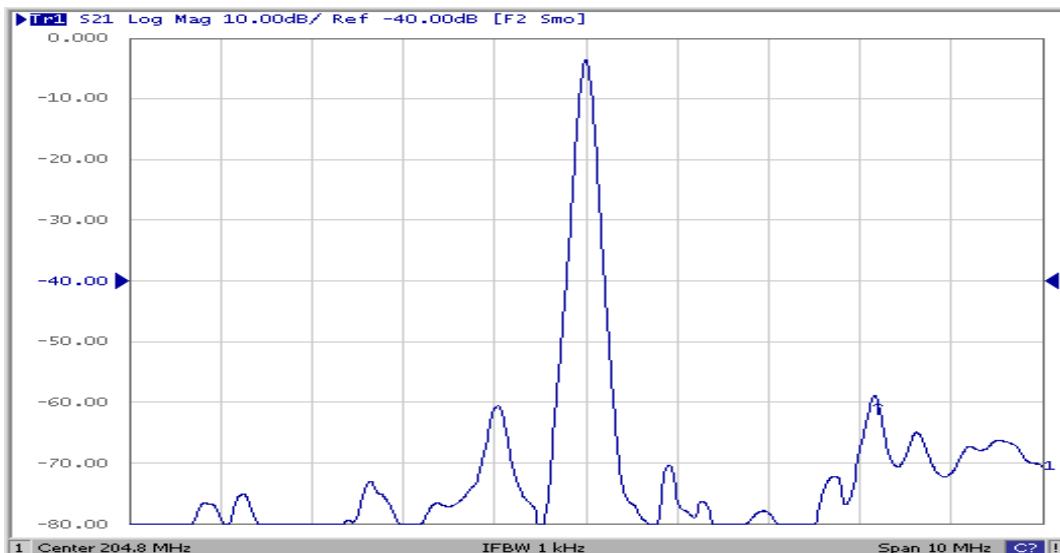
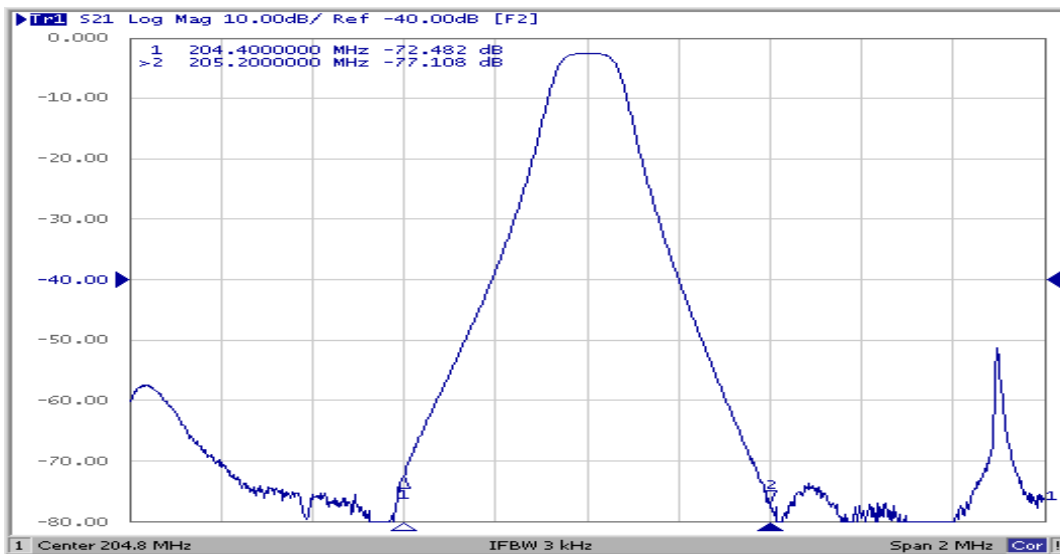
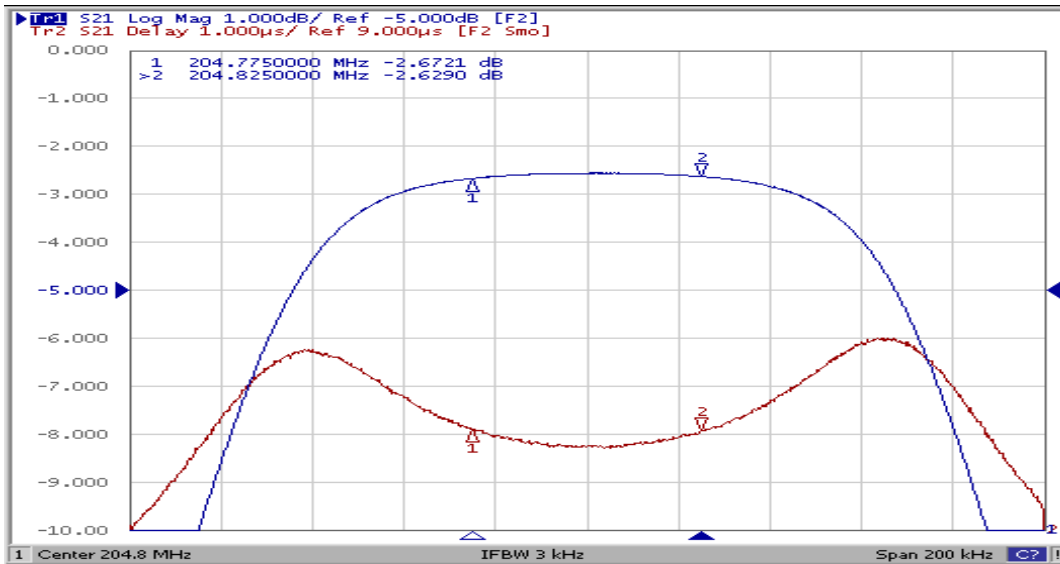
HP Network analyzer



SAW Filter 204.80MHz
Part No: MP03440

Model: TB0983A
Rev No: 1

E. FREQUENCY CHARACTERISTICS:

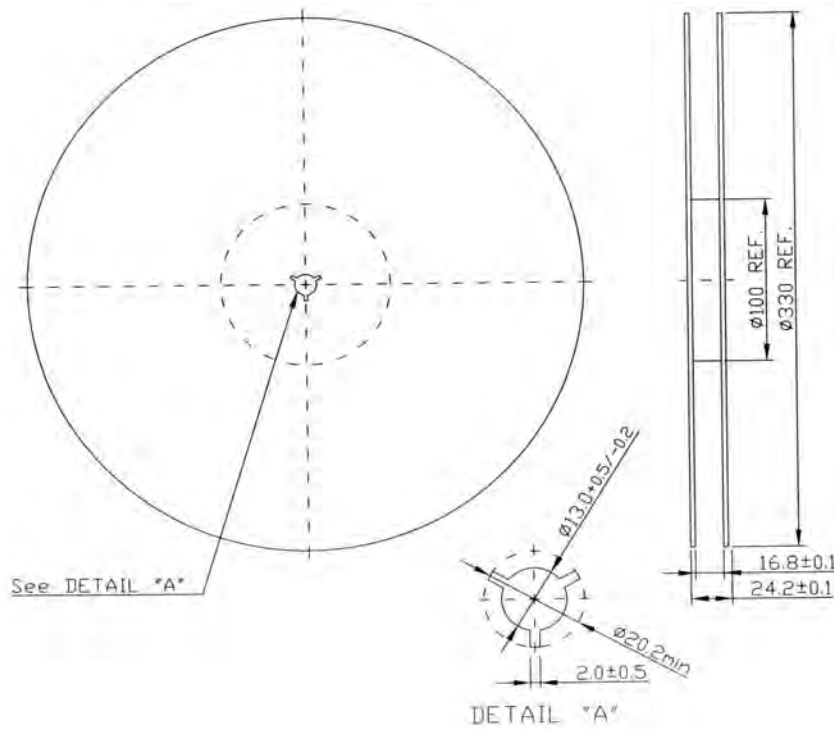


SAW Filter 204.80MHz
Part No: MP03440

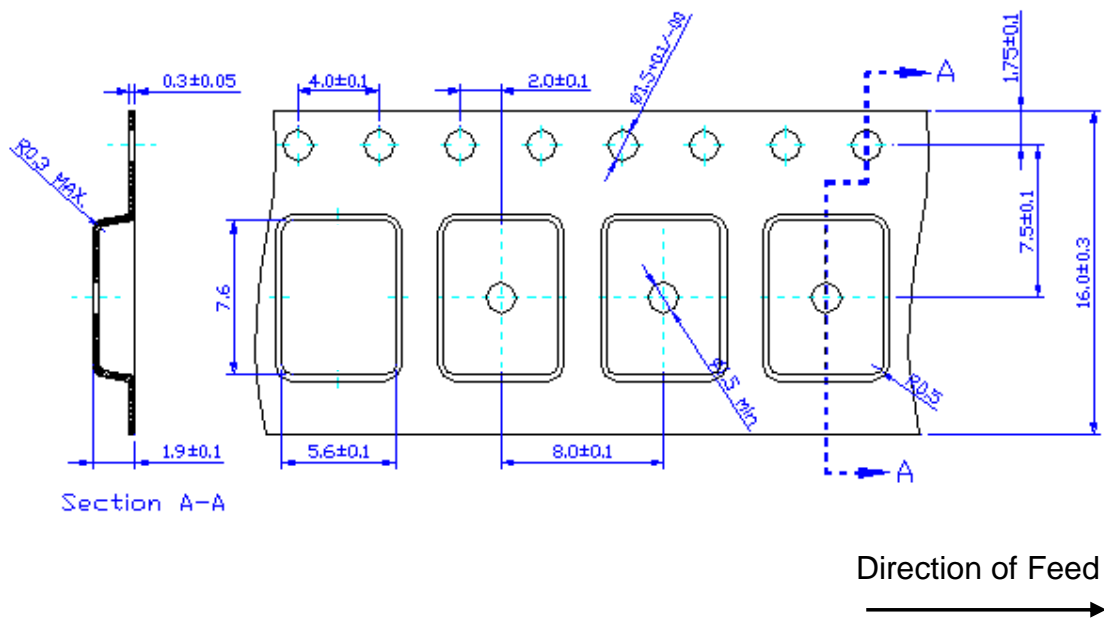
Model: TB0983A
Rev No: 1

F. PACKING:

1. REEL DIMENSION



2. TAPE DIMENSION



SAW Filter 204.80MHz
Part No: MP03440

Model: TB0983A
Rev No: 1

G. RECOMMENDED REFLOW PROFILE:

