

SAW Filter 246.0MHz
Part No: MP10277

Model: TB0266B
Rev No: 1

A. MAXIMUM RATING:

Electrostatic Sensitive Device

1. Input Power Level: 10dBm
2. DC Voltage: 5V
3. Operating Temperature: -20°C to 85°C
4. Storage Temperature: -40°C to 125°C
5. Moisture Sensitivity Level: Level 1 (MSL1)

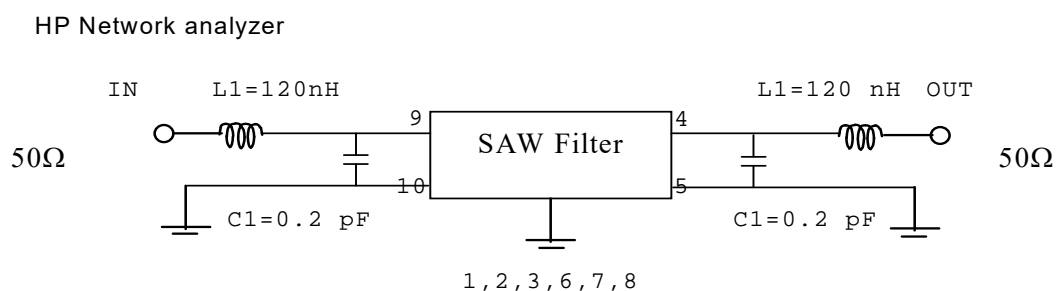
B. ELECTRICAL CHARACTERISTICS:

Item	Unit	Min.	Typ.	Max.	Note
Center frequency Fc	MHz	245.9	246	246.1	1
Minimum Insertion Loss (Fc ±50kHz) IL	dB	-	4.1	6.5	1
3dB BW	MHz	0.15	0.188	0.25	1
Passband Ripple (Fc ±50kHz)	dB	-	0.35	3.0	1
Group delay ripple (Fc ±50kHz) GD	µs	-	1.0	4.0	1
Attenuation: (Reference level from Min IL)					
Fc -25 to Fc -1.6MHz	dB	50	65	-	-
Fc -1.6 to Fc -0.6MHz	dB	32	60	-	-
Fc -0.6 to Fc -0.4MHz	dB	20	55	-	-
Fc +0.4 to Fc +0.6MHz	dB	20	55	-	-
Fc +0.6 to Fc +1.6MHz	dB	32	60	-	-
Fc +1.6 to Fc +25MHz	dB	50	60	-	-
Temperature Coefficient	ppm/C2	-0.032			

Note 1: The standard definitions is in JIS C 6703

C. MEASUREMENT CIRCUIT:

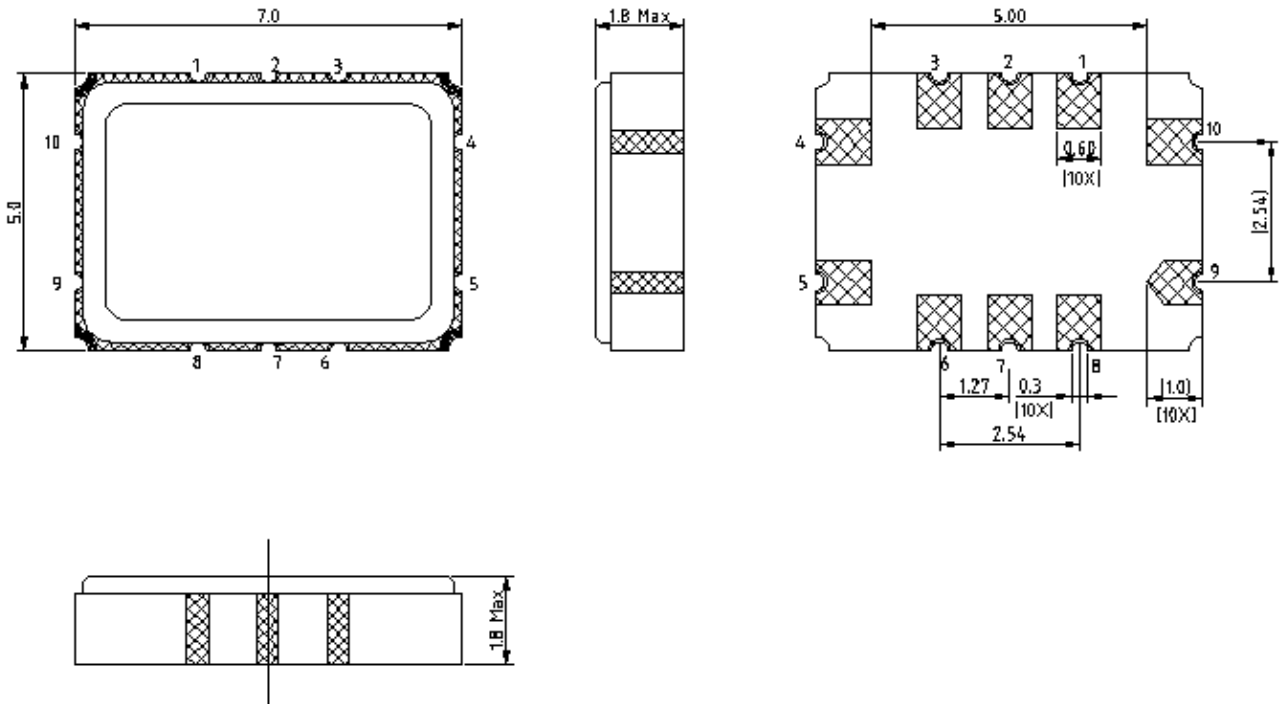
50Ohm Test circuit (single-ended / single-ended)



SAW Filter 246.0MHz
Part No: MP10277

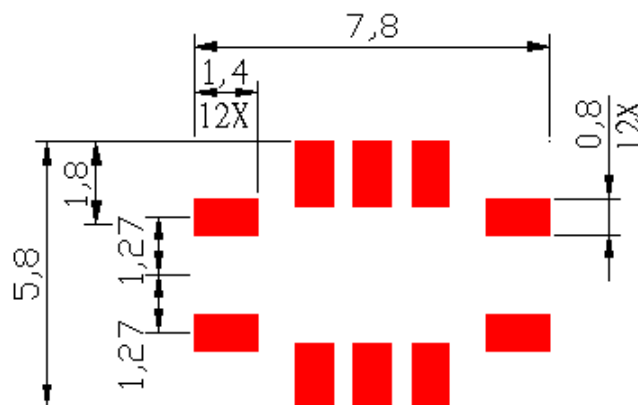
Model: TB0266B
Rev No: 1

D. OUTLINE DRAWING:



- 9: Input
 - 4: Output
 - 10: Balance input or input ground
 - 5: Balance output or output ground
 - 1, 2, 3, 6, 7, 8 to be grounded
- Unit: mm

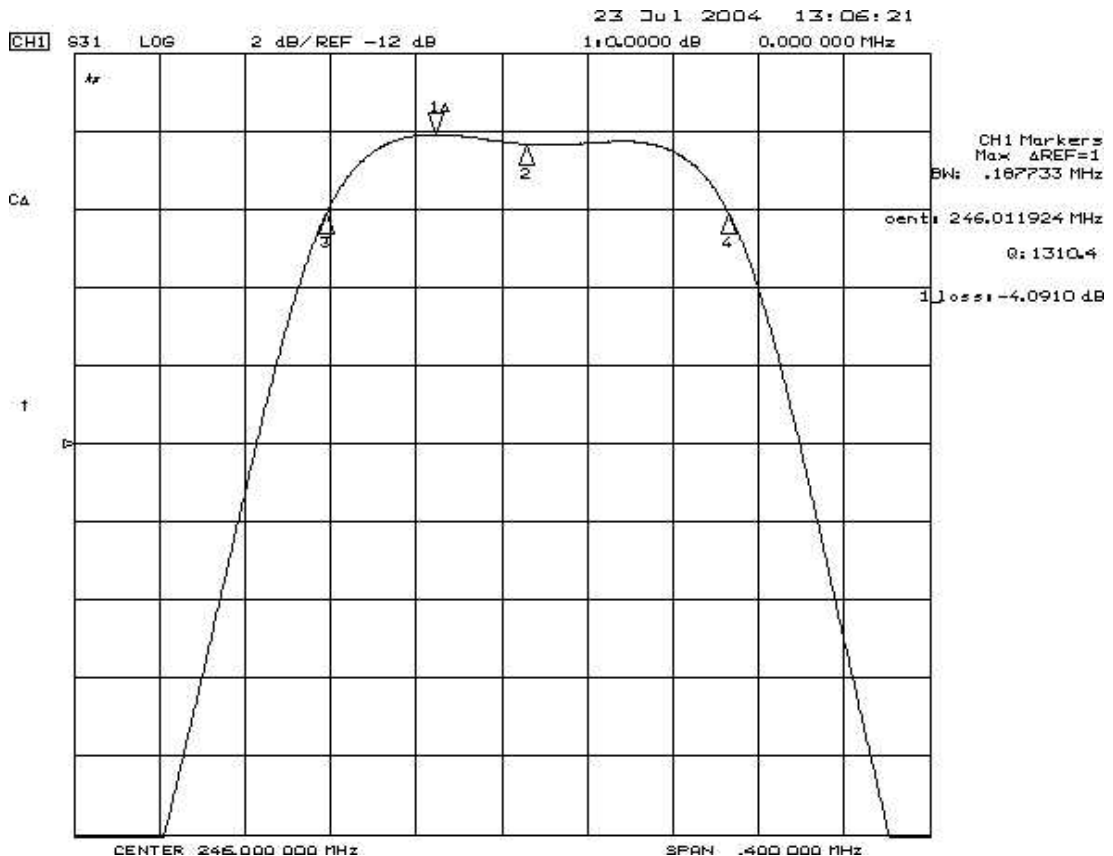
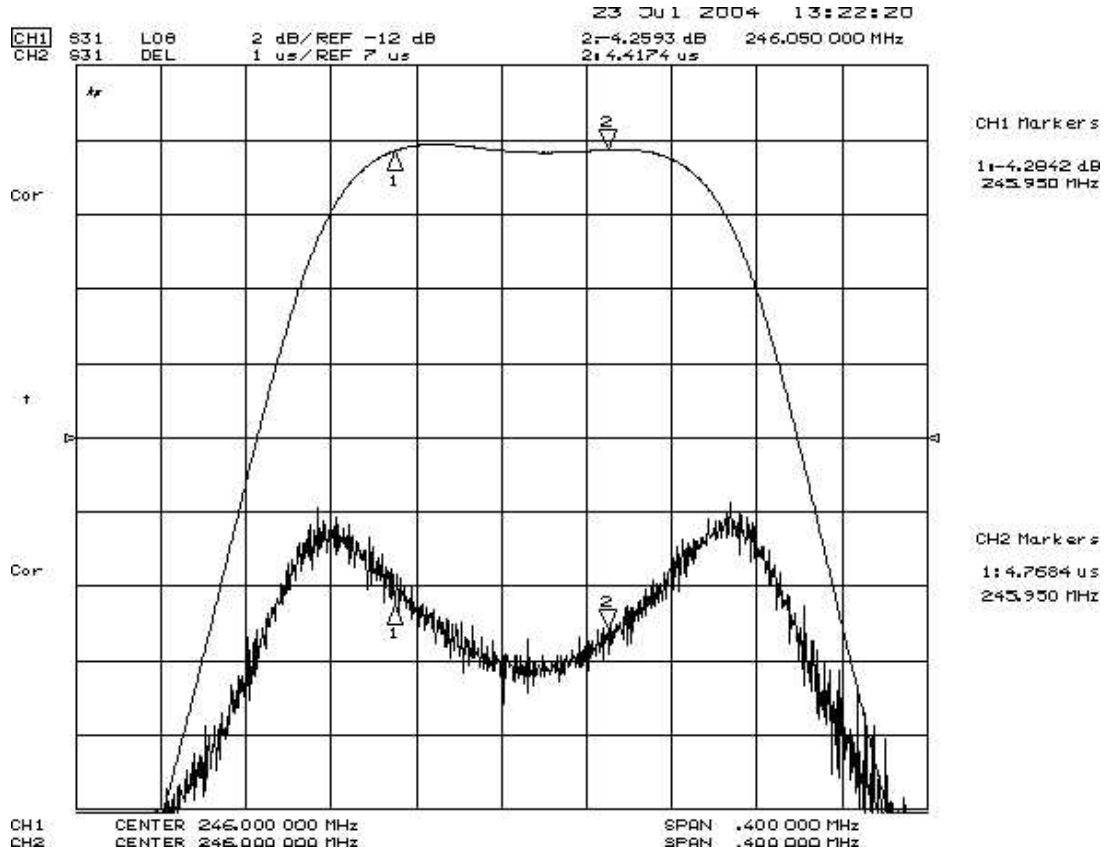
E. PCB FOOTPRINT:



SAW Filter 246.0MHz
Part No: MP10277

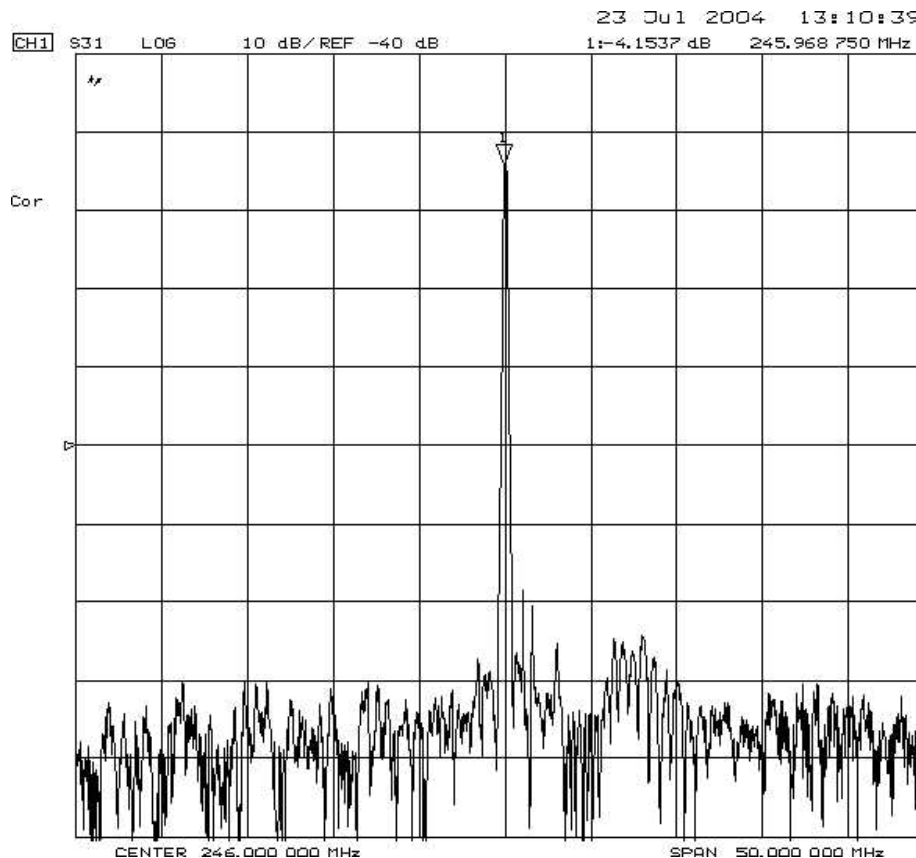
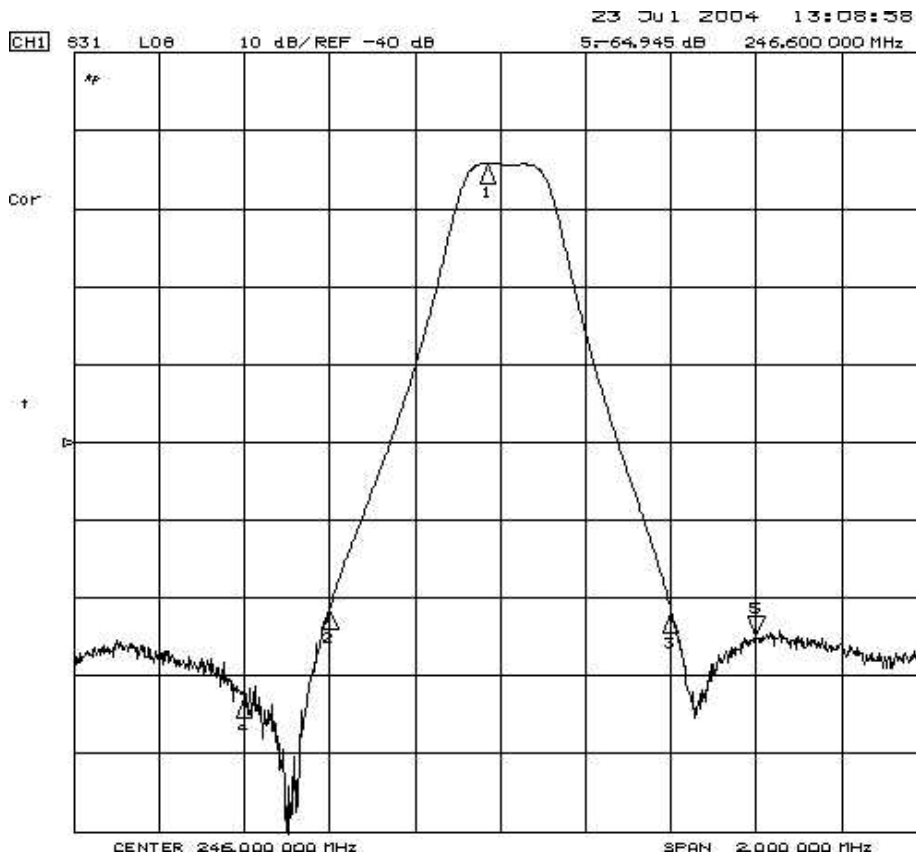
Model: TB0266B
Rev No: 1

F. FREQUENCY CHARACTERISTICS:



SAW Filter 246.0MHz
Part No: MP10277

Model: TB0266B
Rev No: 1

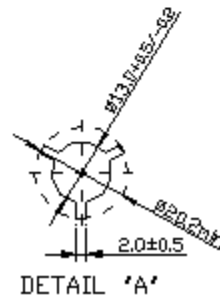
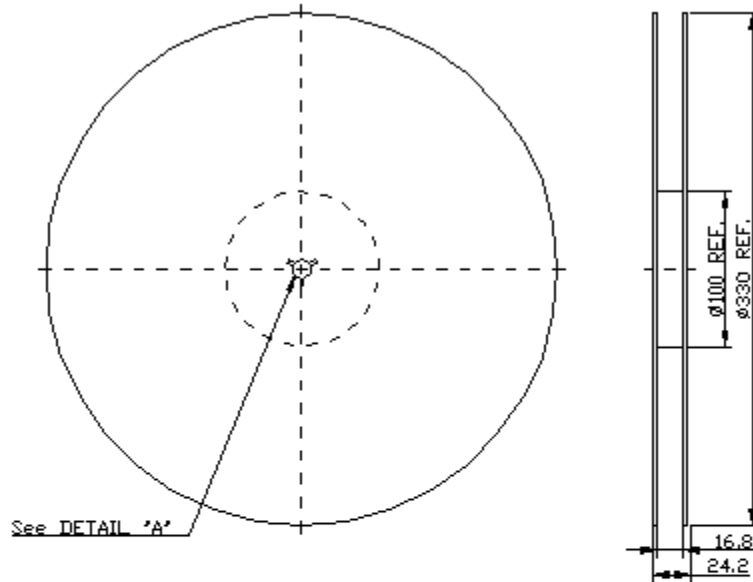


SAW Filter 246.0MHz
Part No: MP10277

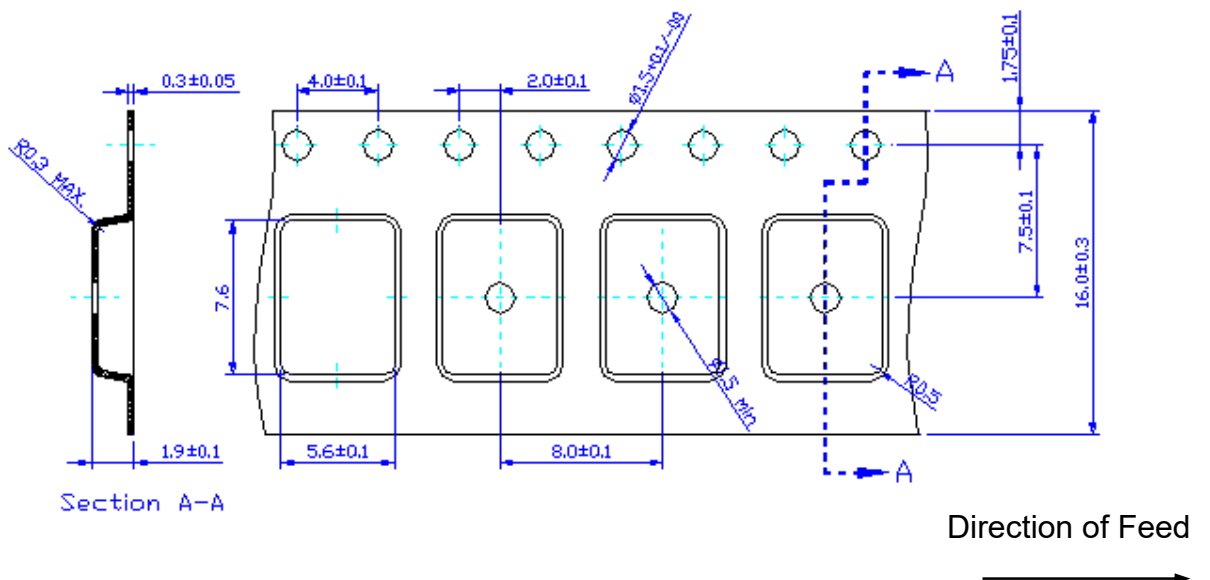
Model: TB0266B
Rev No: 1

G. PACKING:

1. Reel Dimension



2. Tape Dimension



SAW Filter 246.0MHz
Part No: MP10277

Model: TB0266B
Rev No: 1

H. RECOMMENDED REFLOW PROFILE:

1. Preheating shall be fixed at 150 ~ 180°C for 60 ~ 90 seconds.
2. Ascending time to preheating temperature 150°C shall be 30 seconds min.
3. Heating shall be fixed at 220°C for 50 ~ 80 seconds and at 260°C +0/-5°C peak (20 ~ 40sec).
4. Time: 2 times.

