

**SAW Filter 140.0MHz**

**Model: TB0390B**

**Part No: MP08574**

**Rev No: 1**

**A. MAXIMUM RATING:**

Electrostatic Sensitive Device (ESD)

1. Operating Temperature: -40°C ~ +85°C
2. Storage Temperature: -40°C ~ +85°C
3. Input Power Level: 10dBm

**B. CHARACTERISTICS:**

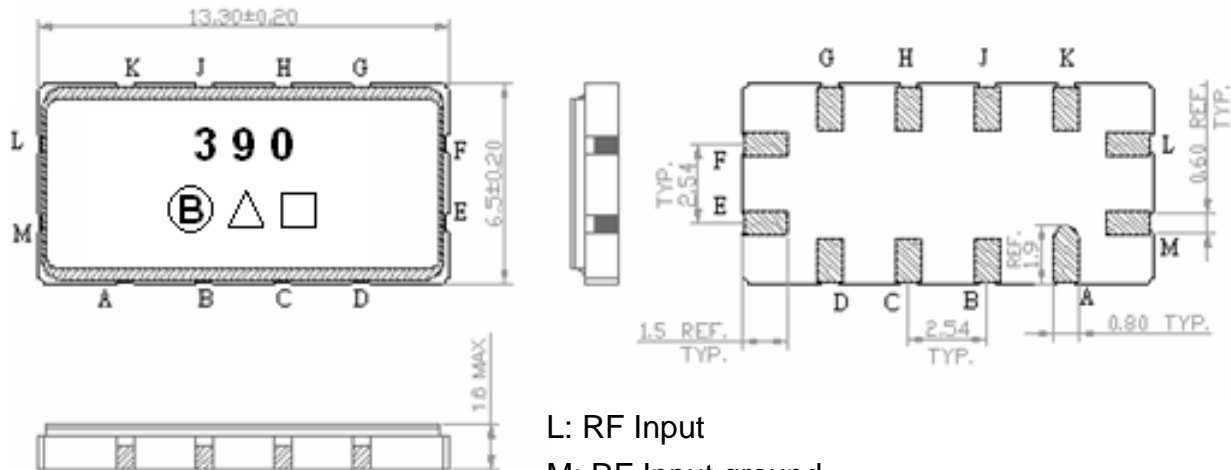
Ambient Temperature: 25°C

Characteristics	Min.	Typ.	Max.	Note
Center frequency Fc MHz	139.75	140.0	140.25	-
Maximum Insertion loss IL dB	-	10.7	14.0	-
1dB Bandwidth MHz	5.50	5.87	-	-
3dB Bandwidth MHz	-	6.73	-	-
40dB Bandwidth MHz	-	9.98	11.00	-
Passband Ripple (Fc ±2.3MHz) MHz	-	0.73	1.20	-
Group Delay Ripple (Fc ±2.3MHz) nS	-	70	100	-
Group Delay at Fc uS	-	0.93	1.00	-
Phase linearity at (Fc ±2.3MHz) P-P Deg	-	8.0	15.0	-
Temp Coefficient ppm/°C	-	-25	-	-
Attenuation: (Reference level from minimum insertion loss)				
DC ~ 123MHz dB	40	45	-	-
157MHz ~ 400MHz dB	42	48	-	-
400MHz ~ 500 MHz dB	25	46	-	-

**SAW Filter 140.0MHz**  
**Part No: MP08574**

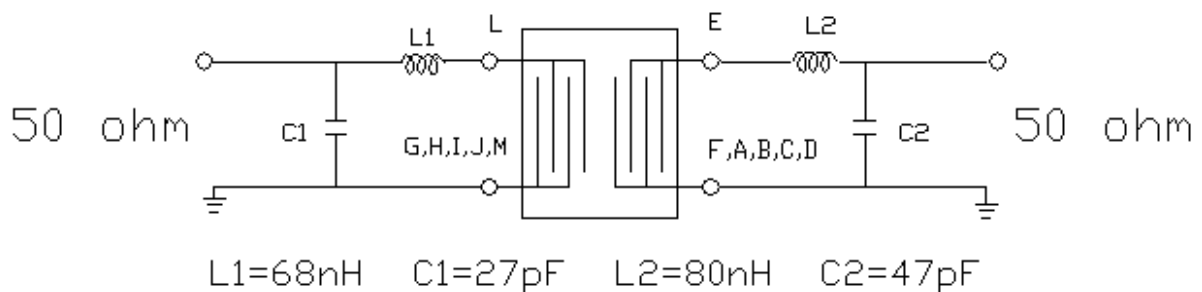
**Model: TB0390B**  
**Rev No: 1**

**C. OUTLINE DRAWING:**

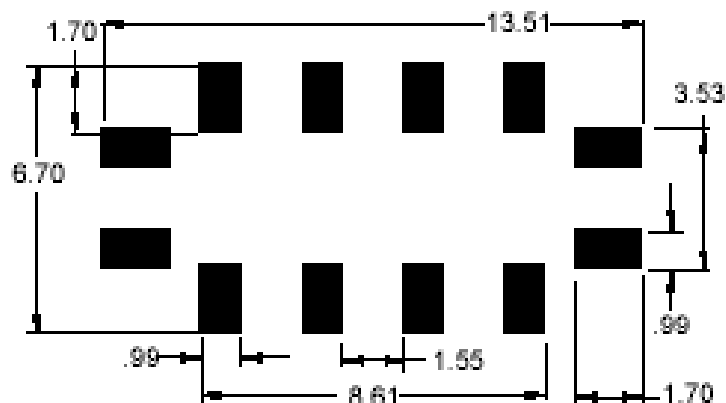


- L: RF Input
  - M: RF Input ground
  - E: RF Output
  - F: RF Output ground
  - A, B, C, D, G, H, J, K: To be ground
- Unit: mm

**D. TEST FIXTURE:**



**E. PCB FOOTPRINT:**



**SAW Filter 140.0MHz**  
**Part No: MP08574**

**Model: TB0390B**  
**Rev No: 1**

**F. FREQUENCY CHARACTERISTICS:**

1. S21 Response

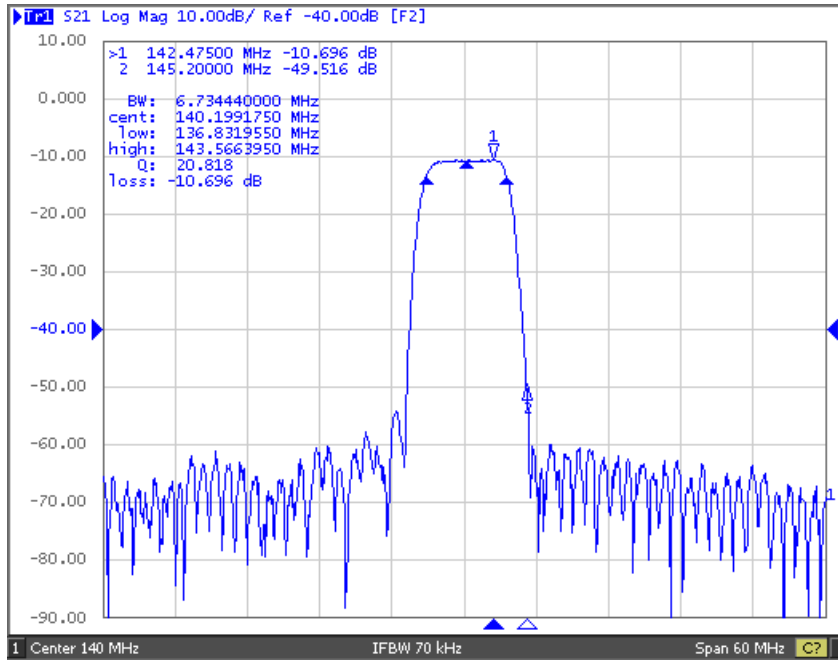


Fig. 1: Horizontal: 6MHz / Div, Vertical: 10Db / Div

2. Pass band Ripple and Group Delay Ripple

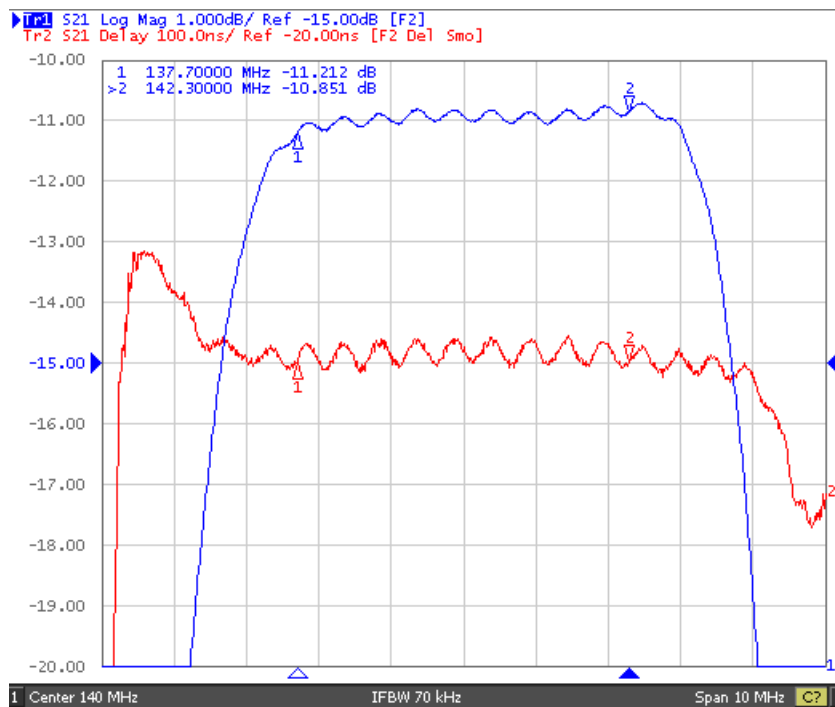


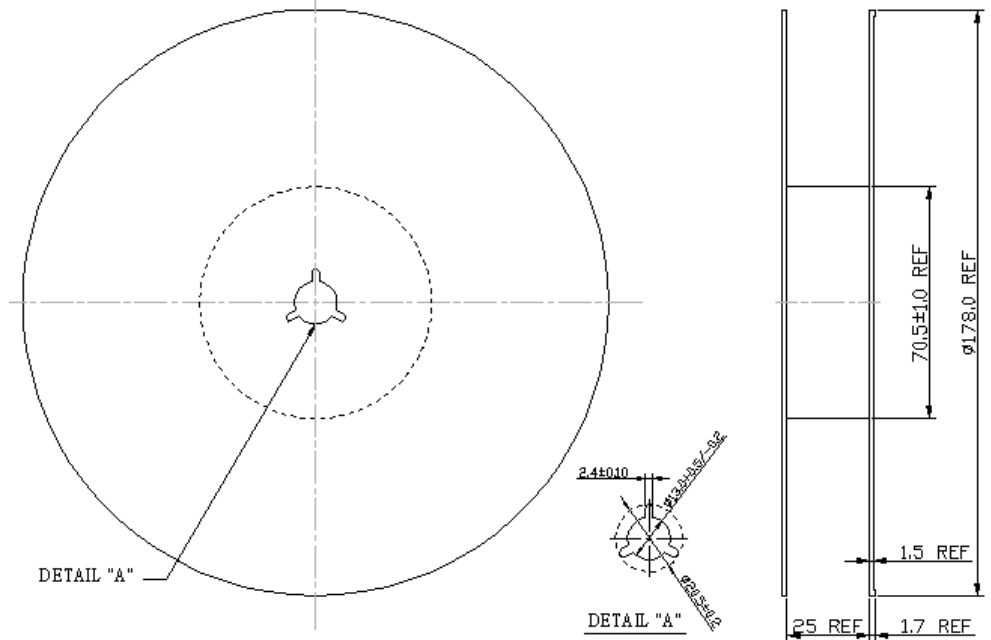
Fig. 2: Horizontal: 1MHz / Div, Vertical: 1dB / Div, Vertical: 100nS

**SAW Filter 140.0MHz**  
**Part No: MP08574**

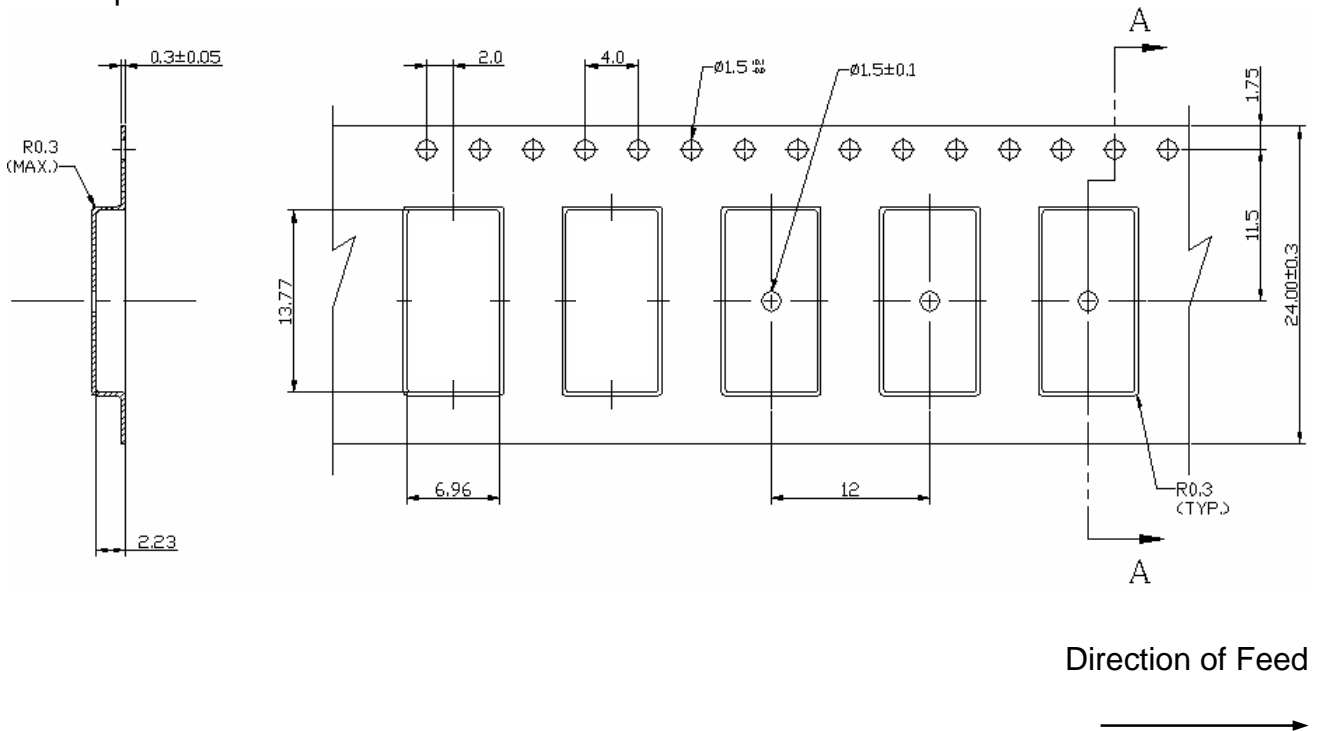
**Model: TB0390B**  
**Rev No: 1**

**G. PACKING:**

1. Reel Dimension



2. Tape Dimension



**SAW Filter 140.0MHz**  
**Part No: MP08574**

**Model: TB0390B**  
**Rev No: 1**

**H. RECOMMENDED REFLOW PROFILE:**

