

SAW Filter 1500.0MHz
Part No: MP08062

Model No: TA0522B
Rev No: 1

A. MAXIMUM RATING:

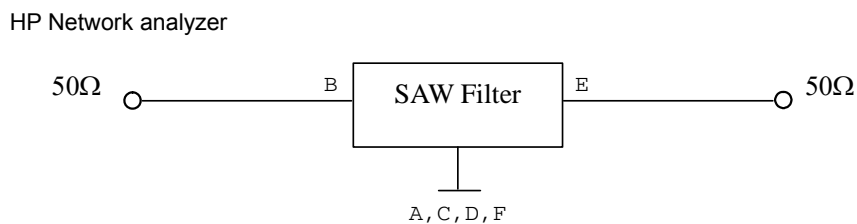
Electrostatic Sensitive Device (ESD)

1. Input Power Level: 5dBm
2. DC voltage: 3V
3. Operating Temperature: -30°C to 85°C
4. Storage Temperature: -40°C to +90°C
5. Moisture Sensitivity Level: Level 1

B. CHARACTERISTICS:

Item	Unit	Min.	Typ.	Max.
Center frequency F_c	MHz	-	1500	-
Insertion loss 1490 ~ 1510MHz IL	dB	-	2.95	4.2
Amplitude ripple 1490 ~ 1510MHz	dB	-	0.3	2.0
Attenuation (Reference level from 0dB)				
1100 ~ 1300MHz	dB	40	55	-
1300 ~ 1440MHz	dB	30	48	-
1580 ~ 1700MHz	dB	30	48	-
1700 ~ 1900MHz	dB	35	51	-
Source impedance Z_S	Ω	-	50	-
Load impedance Z_L	Ω	-	50	-

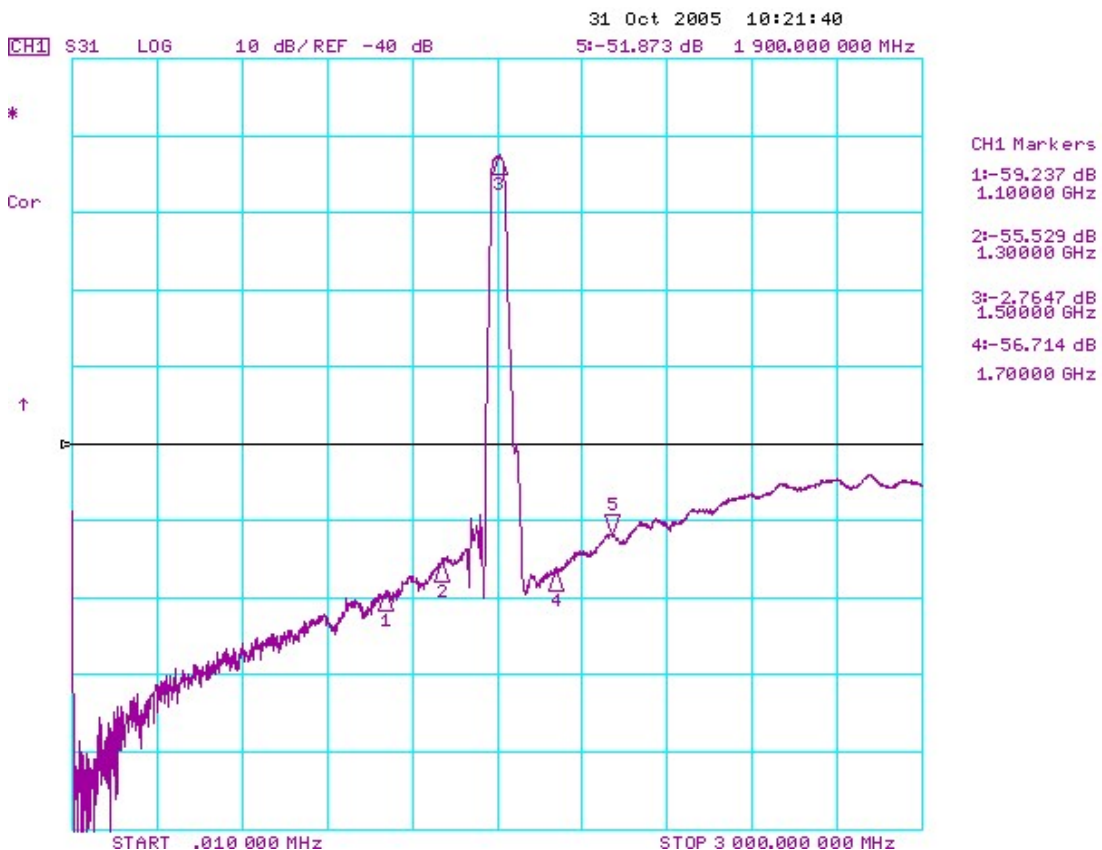
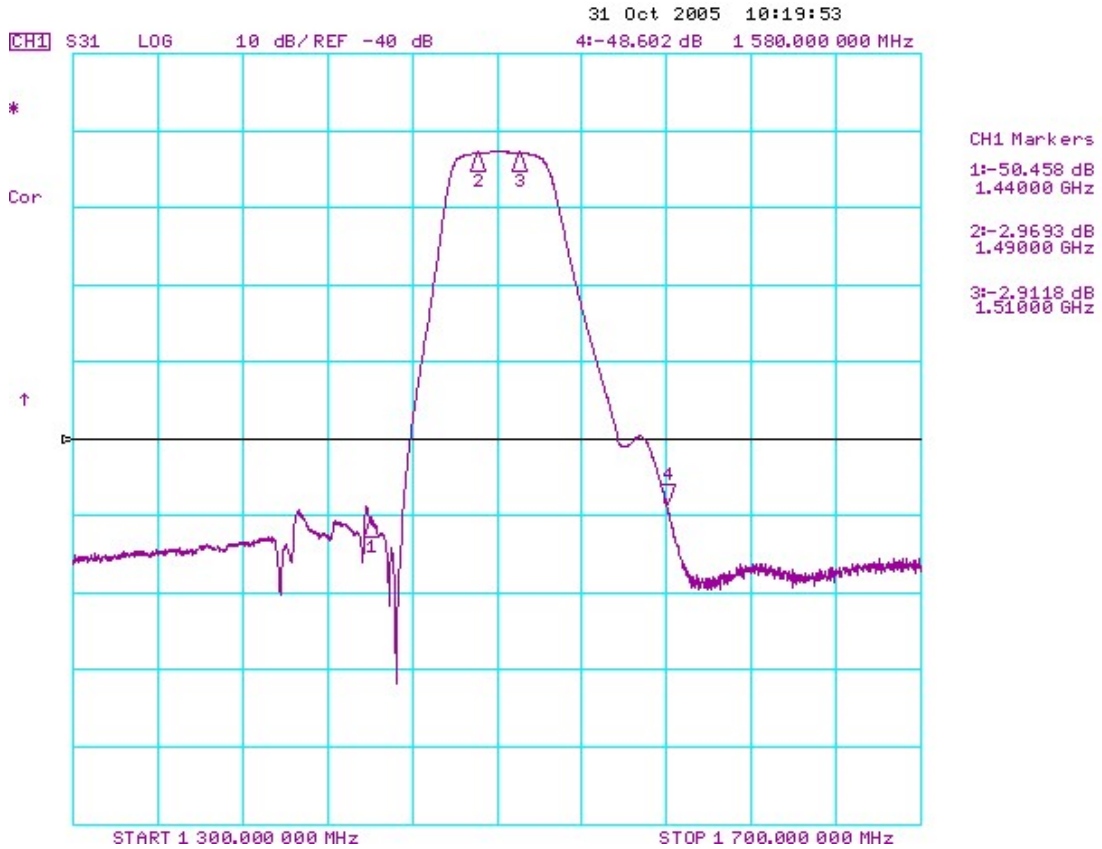
C. MEASUREMENT CIRCUIT:



SAW Filter 1500.0MHz
Part No: MP08062

Model No: TA0522B
Rev No: 1

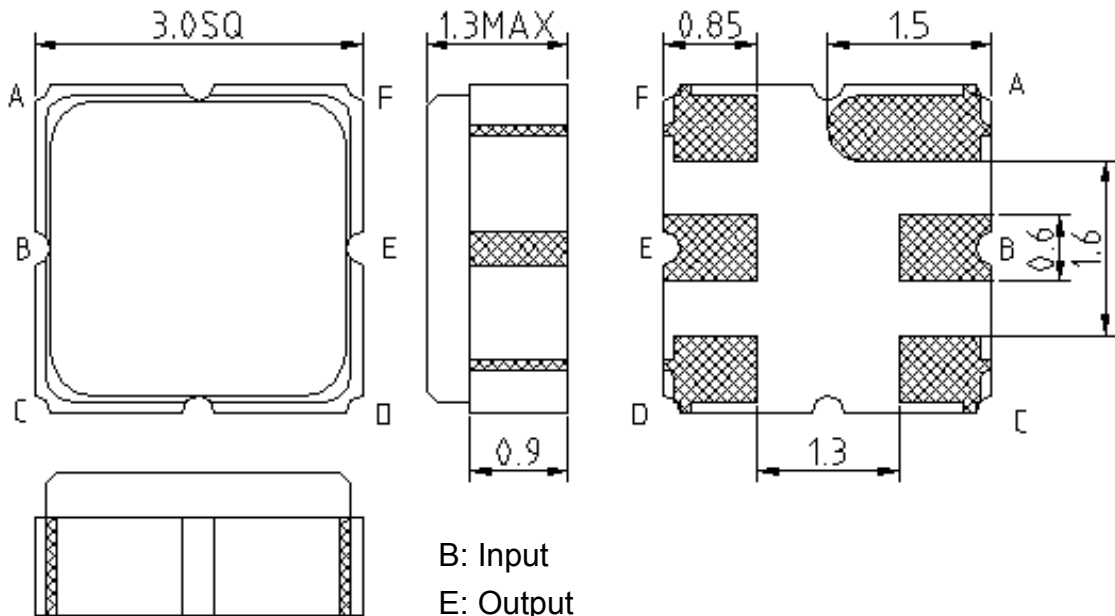
D. TRANSFER FUNCTION:



SAW Filter 1500.0MHz
Part No: MP08062

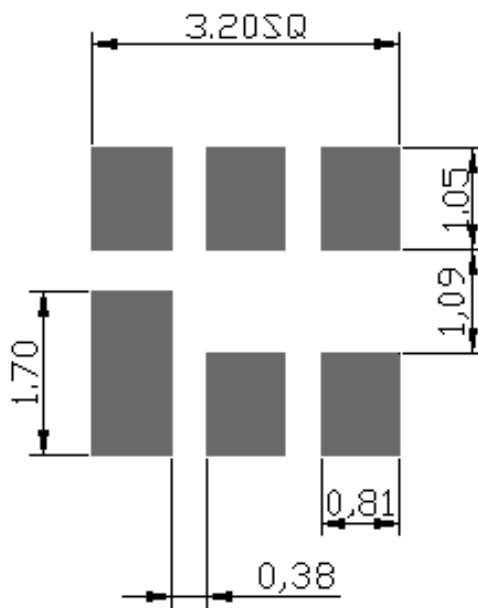
Model No: TA0522B
Rev No: 1

E. OUTLINE DRAWING:



B: Input
E: Output
A, C, D, F: Ground
Unit: mm

F. PCB FOOTPRINT:

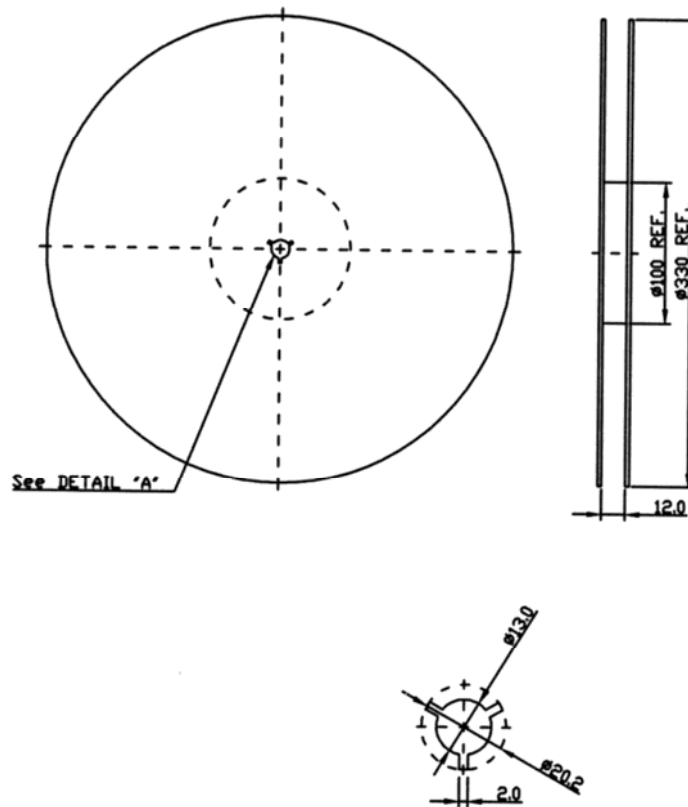


SAW Filter 1500.0MHz
Part No: MP08062

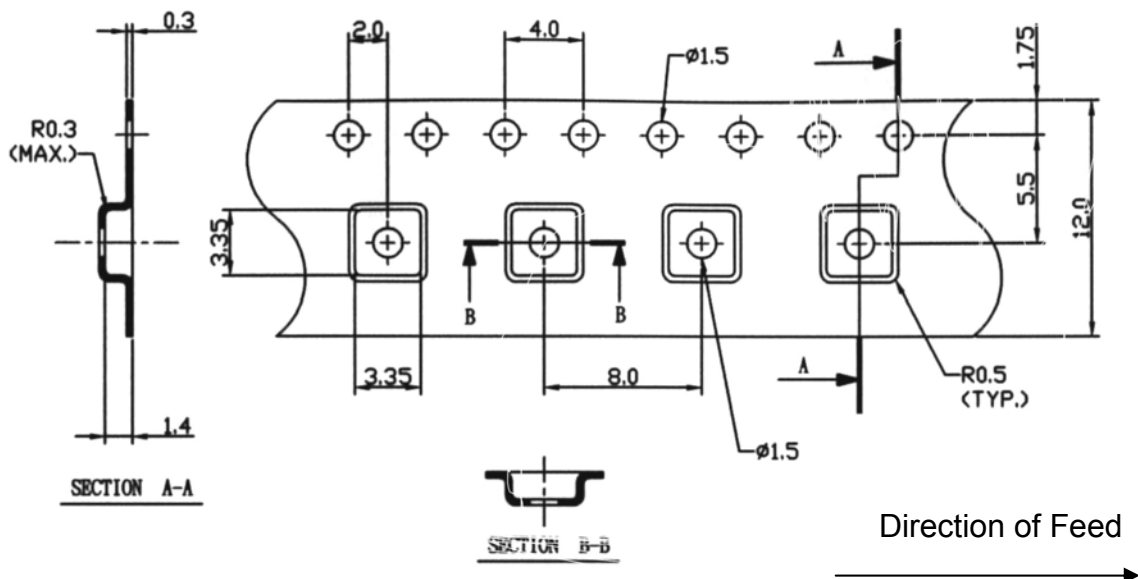
Model No: TA0522B
Rev No: 1

G. PACKING:

1. Reel Dimension



2. Tape Dimension



SAW Filter 1500.0MHz
Part No: MP08062

Model No: TA0522B
Rev No: 1

H. RECOMMENDED REFLOW PROFILE:

1. Preheating shall be fixed at 150 ~ 180°C for 60 ~ 90 seconds.
2. Ascending time to preheating temperature 150°C shall be 30 seconds min.
3. Heating shall be fixed at 220°C for 50 ~ 80 seconds and at 260°C +0/-5°C peak (20 ~ 40 sec).
4. Time: 2 times.

