

SAW Filter 868.30MHz
Part No: MP11039

Model: TA0280G
Rev No: 1

A. MAXIMUM RATING:

1. Input Power Level: 0dBm
2. DC voltage: 0V
3. Operating Temperature: -45°C to +90°C
4. Storage Temperature: -45°C to +90°C

B. ELECTRICAL CHARACTERISTICS:

Reference temperature: 25°C

Item	Min.	Typ.	Max.	Note
Center frequency Fc (MHz)	-	868.30	-	1
Minimum IL. (868~868.78MHz) (dB) IL min	-	2.7	4.2	
Pass band (relative to IL min)				
868~868.78 MHz (dB)	-	1.0	3.0	1
867.9~868.88 MHz (dB)	-	1.5	6.0	
Pass bandwidth (relative to IL min) BW3 (kHz)	-	1500	-	
Attenuation: (relative to IL min) (dB)				
10~700MHz (dB)	50	55	-	
700~830MHz (dB)	40	45	-	
830~850MHz (dB)	35	40	-	
850~865.02MHz (dB)	25	28	-	1
871~874.5MHz (dB)	11	15	-	
874.5~883MHz (dB)	16	21	-	
883~900MHz (dB)	30	35	-	
900~1000MHz (dB)	40	45	-	
Impedance at Fc: Input $Z_{IN}=R_{IN}/C_{IN}$ Output $Z_{OUT}=R_{OUT}/C_{OUT}$	117Ω // 3.7 pF			
	117Ω // 3.7 pF			

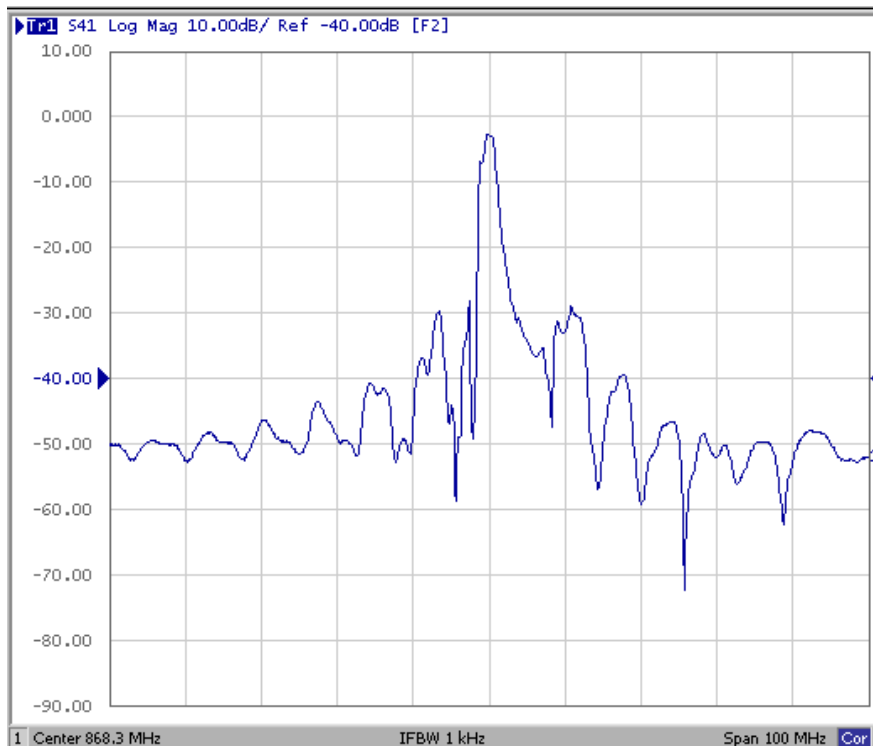
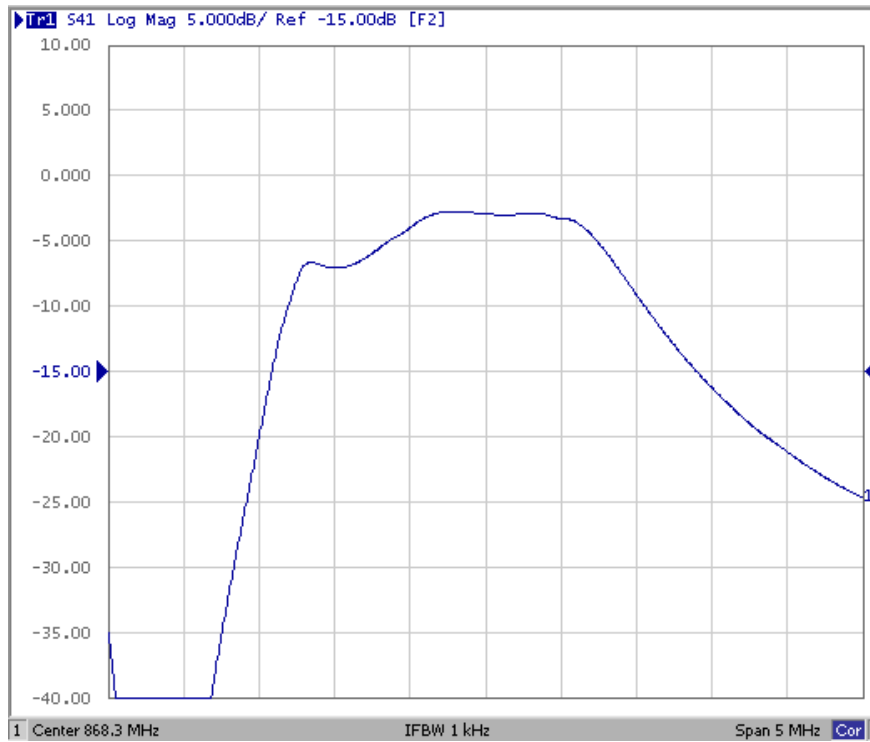
Note 1: The standard definitions is in JIS C 6703

SAW Filter 868.30MHz
Part No: MP11039

Model: TA0280G
Rev No: 1

C. FREQUENCY CHARACTERISTICS:

The response includes the loss of matching circuit.

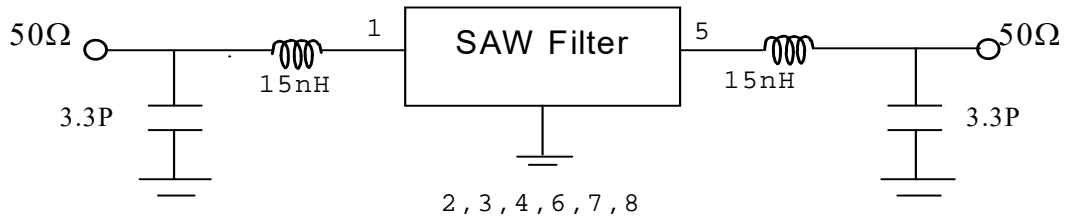


SAW Filter 868.30MHz
Part No: MP11039

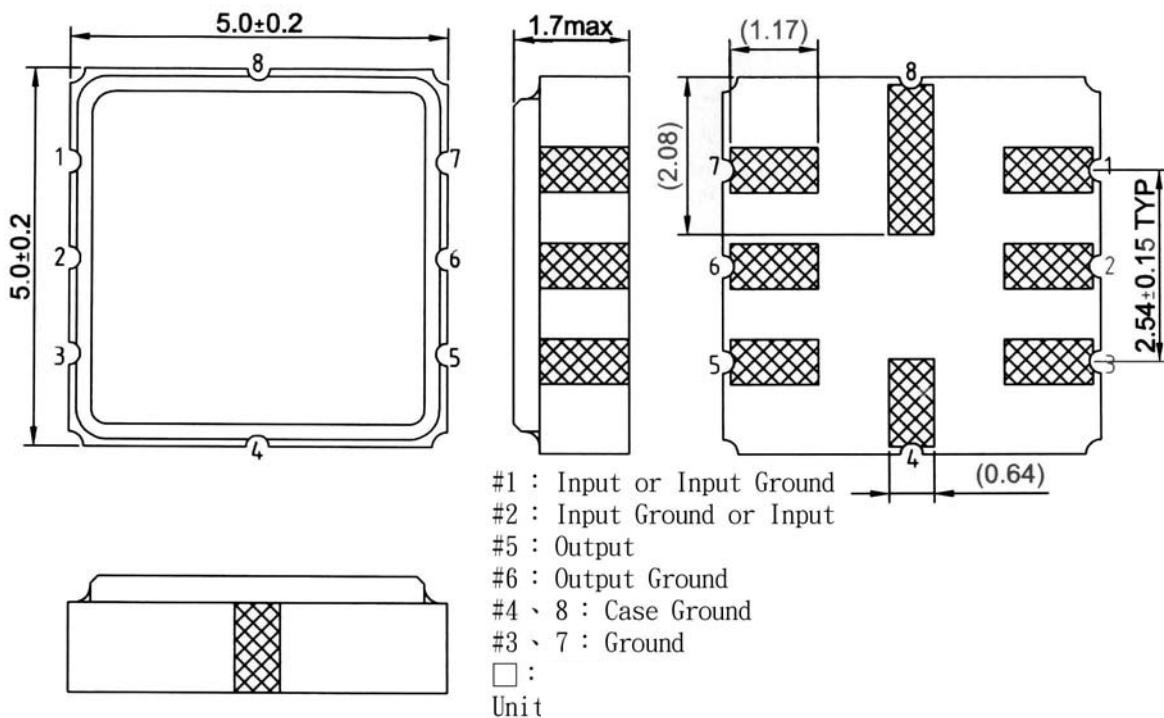
Model: TA0280G
Rev No: 1

D. MEASUREMENT CIRCUIT:

HP Network analyzer



E. OUTLINE DRAWING:

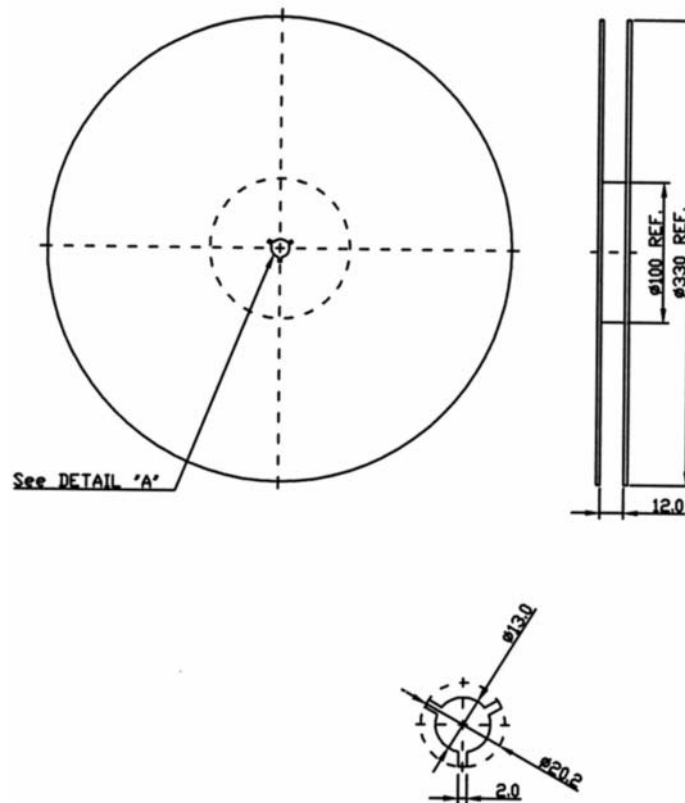


SAW Filter 868.30MHz
Part No: MP11039

Model: TA0280G
Rev No: 1

F. PACKING:

1. Reel Dimensions



2. Tape Dimensions

