

**SAW Filter 1575.42 MHz**  
**Part No: MA09681**

**Model: TA0757A**  
**Rev No: 2**

Electrostatic Sensitive Device (ESD)

**A. MAXIMUM RATING:**

1. Input Power Level: 15 dBm
2. DC Voltage: +/- 3 V
3. Operating temperature range: -40 °C to +85 °C
4. Storage temperature range: -40 °C to +100 °C
5. Moisture Sensitivity Level: Level 3 (MSL3)

**B. ELECTRICAL CHARACTERISTICS:**

Terminating source impedance:  $Z_s = 50 \Omega$  (Single-ended)

Terminating load impedance:  $Z_L = 50 \Omega$  (Single-ended)

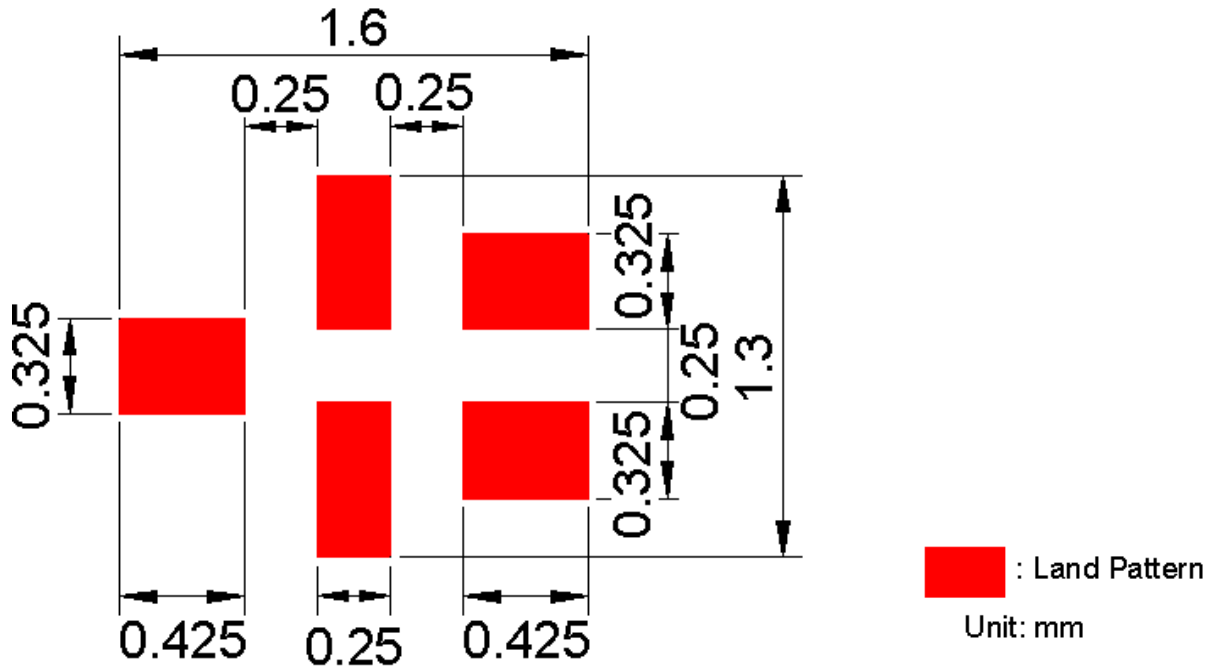
Item	Unit	Min.	Type.	Max.
Center Frequency $F_c$	MHz	-	1575.42	-
Max. Insertion Loss (1574.42~1576.42 MHz) IL	dB	-	0.9	1.5
Amplitude ripple (574.42~1576.42 MHz)	dB	-	0.1	0.75
Bandwidth @ -2dB	MHz	-	40	-
VSWR (1574.42~1576.42 MHz)		-	1.15	1.6
Attenuation				
D.C~1450 MHz	dB	35	38	-
1450~1520 MHz	dB	30	45	-
1625~1640 MHz	dB	45	48	-
1640~1805 MHz	dB	38	40	-
1805~1910 MHz	dB	38	40	-
1910~2000 MHz	dB	38	43	-
2000~4000 MHz	dB	30	45	-
4000~6000 MHz	dB	20	22	-



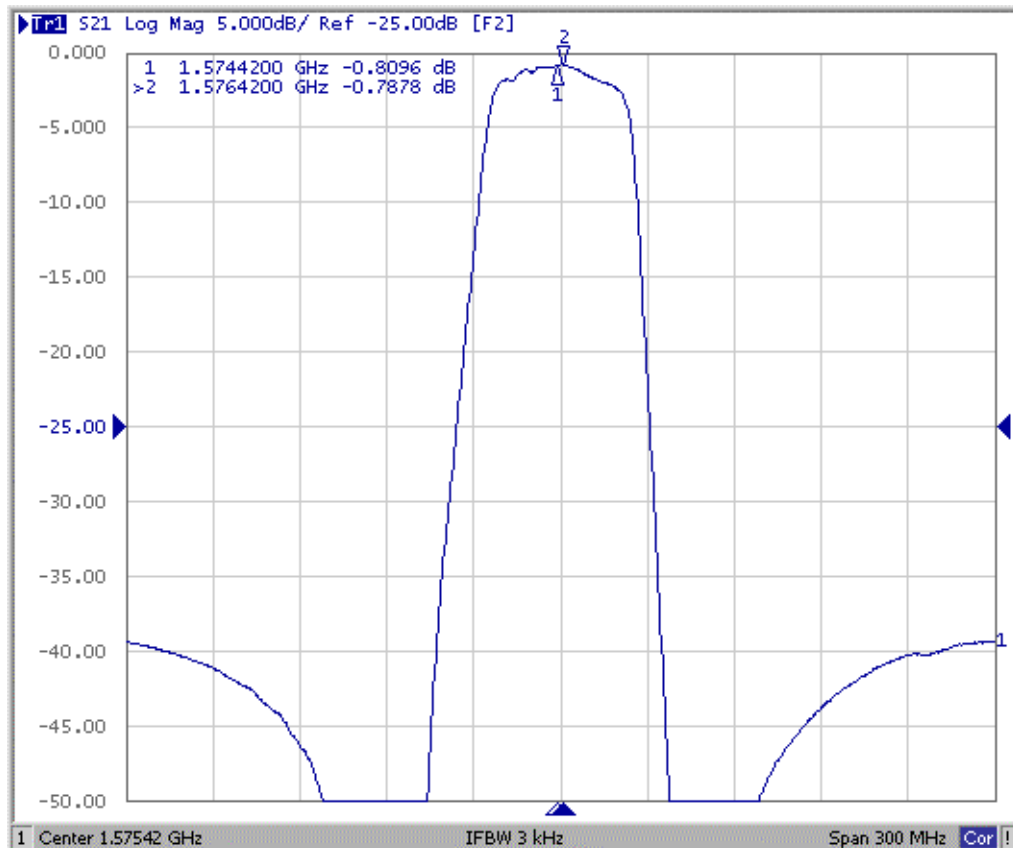
**SAW Filter 1575.42 MHz**  
**Part No: MA09681**

**Model: TA0757A**  
**Rev No: 2**

**E. PCB Footprint:**

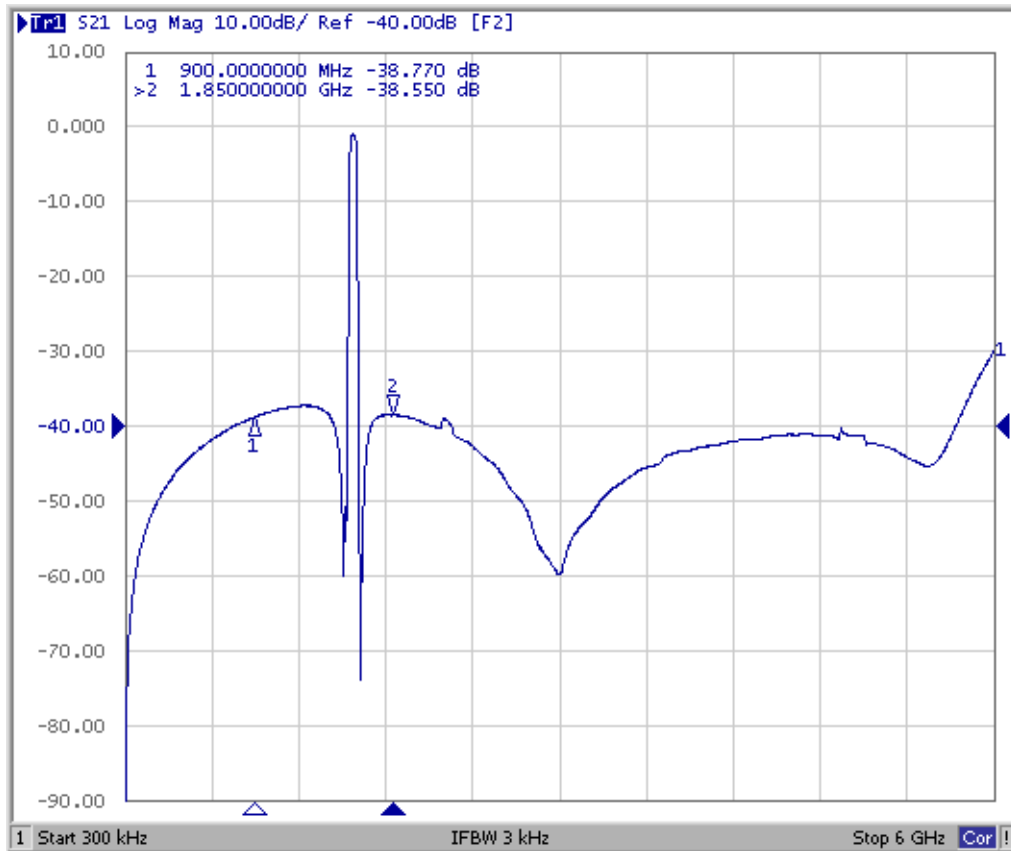


**F. Frequency Characteristics:**



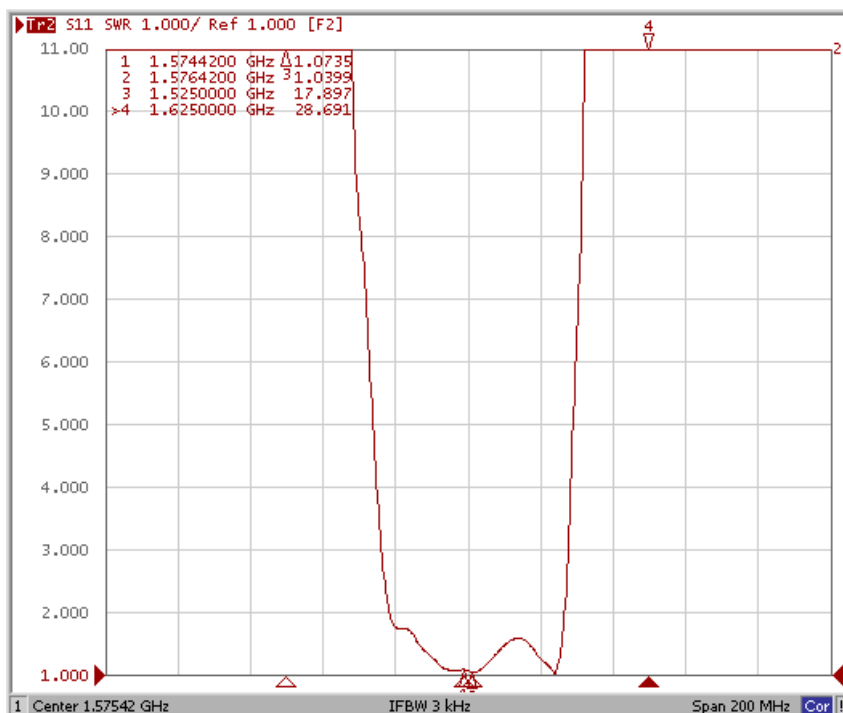
**SAW Filter 1575.42 MHz**  
**Part No: MA09681**

**Model: TA0757A**  
**Rev No: 2**



Reflection Functions:

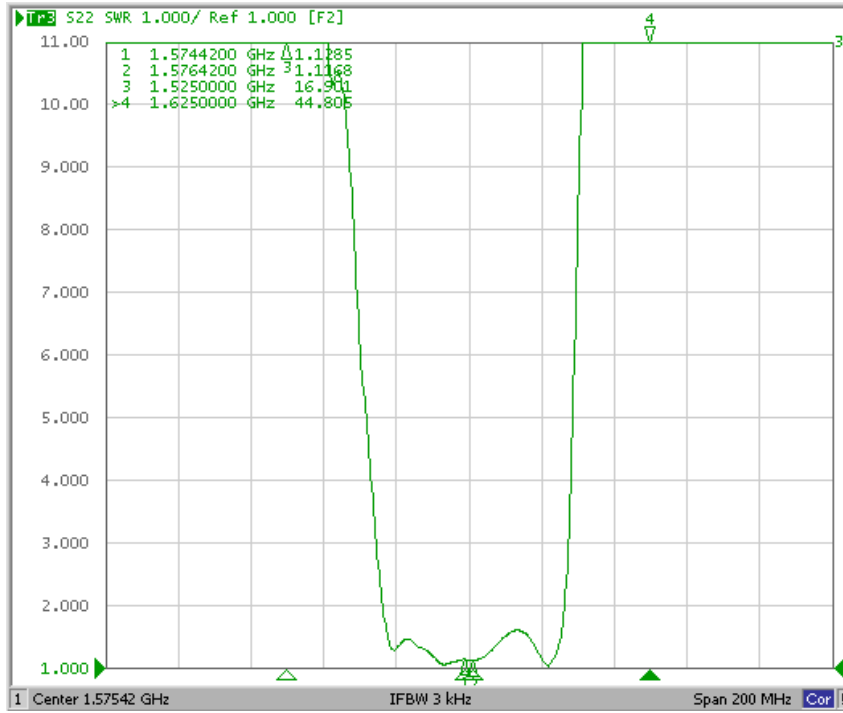
S11



**SAW Filter 1575.42 MHz**  
**Part No: MA09681**

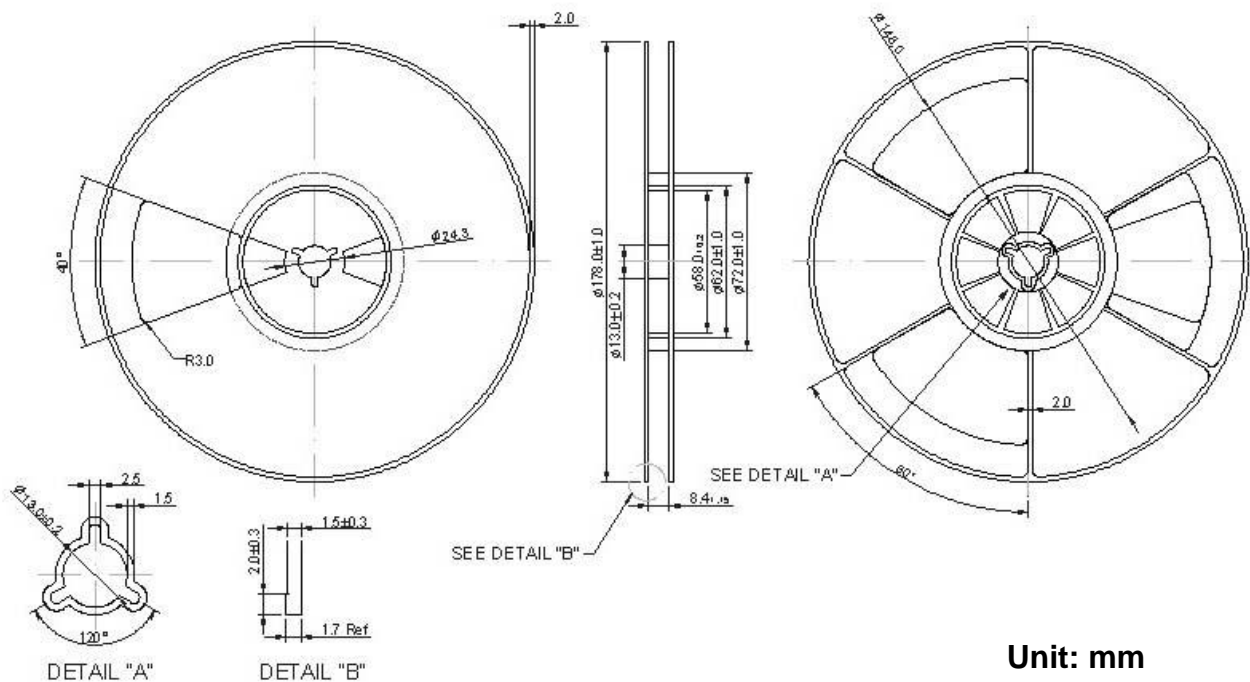
**Model: TA0757A**  
**Rev No: 2**

**S22**



**G. PACKING:**

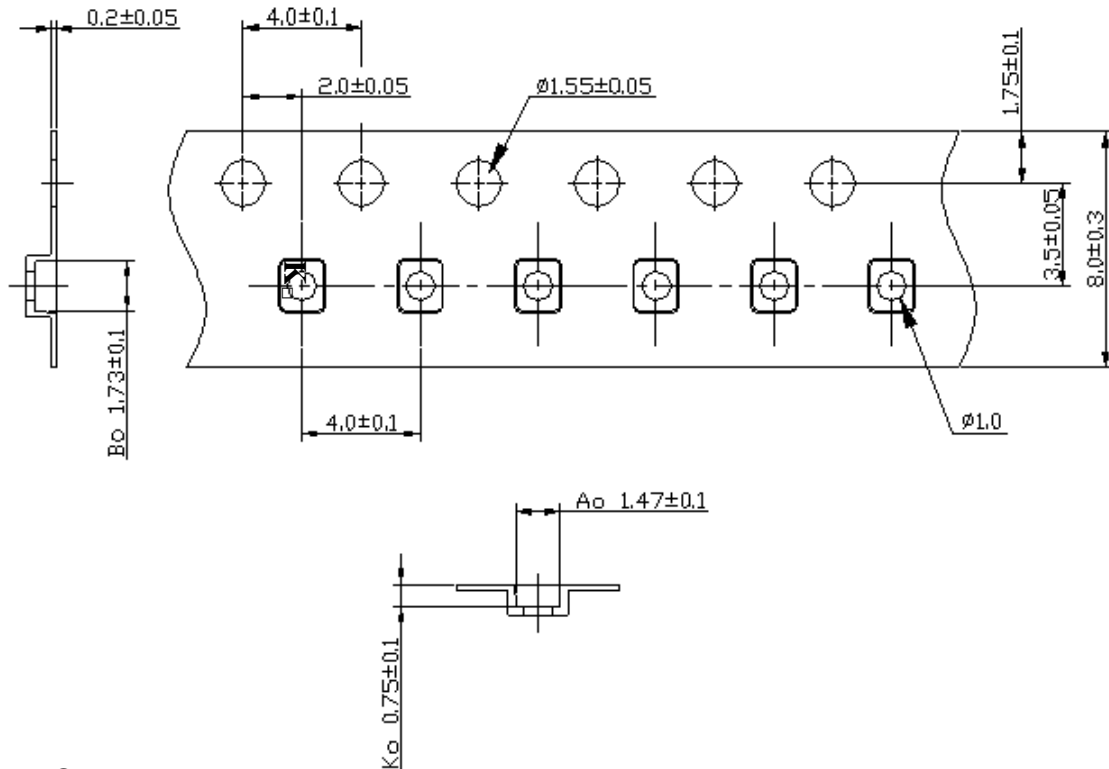
1. Reel dimension



**SAW Filter 1575.42 MHz**  
**Part No: MA09681**

**Model: TA0757A**  
**Rev No: 2**

2.tape dimension



**H. RECOMMENDED REFLOW PROFILE :**

1. Preheating shall be fixed at  $150 \sim 180^\circ\text{C}$  for 60~90 seconds.
2. Ascending time to preheating temperature  $150^\circ\text{C}$  shall be 30 seconds min.
3. Heating shall be fixed at  $220^\circ\text{C}$  for 50~80 seconds and at  $260^\circ\text{C} + 0/-5^\circ\text{C}$  peak (20~40sec).
4. Time: 2 times.

