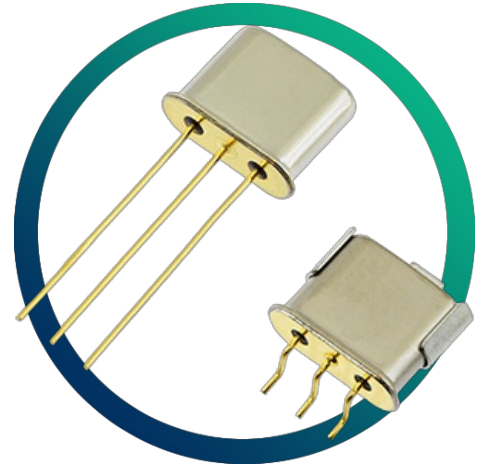


GMCF-21 21G30B

21.4MHz 4 pole crystal filter with
30.0kHz 3dB bandwidth

- Comprehensive stocks
- Custom specifications available



CONFIGURABLE OPTIONS

| Parameter | Option Code |
|--------------------|-------------|
| Package | |
| Any | |
| UM-1/3Lx2 (leaded) | |
| UM-5/3Lx2 (leaded) | |
| UM-1JN/3Lx2 (SMT) | |
| UM-5JN/3Lx2 (SMT) | |

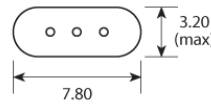
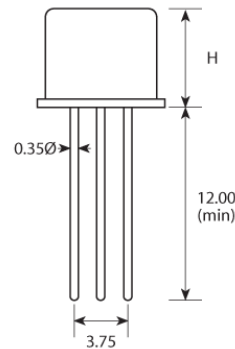
SPECIFICATIONS

| | |
|--|---|
| Centre frequency | 21.4MHz |
| Dimensions | Package options available - see Package Drawing |
| Operating temperature range | -20 to +70°C |
| Number of poles | 4 |
| Pass band | -3dB @ ±15.0kHz min |
| Attenuation band | -40dB @ ±50.0kHz max |
| In-band ripple | 1.0dB max |
| Insertion loss | 2.5dB max |
| Guaranteed attenuation | -65dB max +350 ~ +1000kHz -80dB max -300 ~ -1000kHz |
| Termination | 3000Ω // -0.5pF |
| Coupling capacitance (C _c) | 3.0pF |
| Package style | UM-1/3Lx2, UM-5/3Lx2 (through-hole) UM-1JN/3Lx2, UM-5JN/3Lx2 (SMT) |

PACKAGE DRAWING

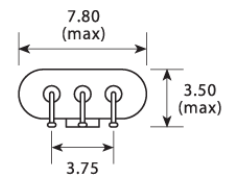
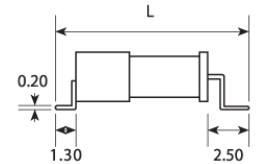
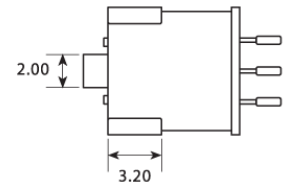
Package Options

Through hole



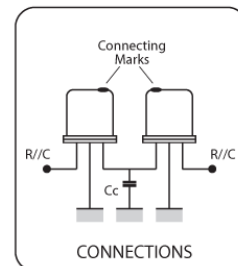
| Package | Height H |
|---------|----------|
| UM-1/3L | 8.00 max |
| UM-5/3L | 6.00 max |

Surface mounted



| Package | Length L |
|-----------|-----------|
| UM-1JN/3L | 12.50 max |
| UM-5JN/3L | 10.50 max |

Dimensions in mm



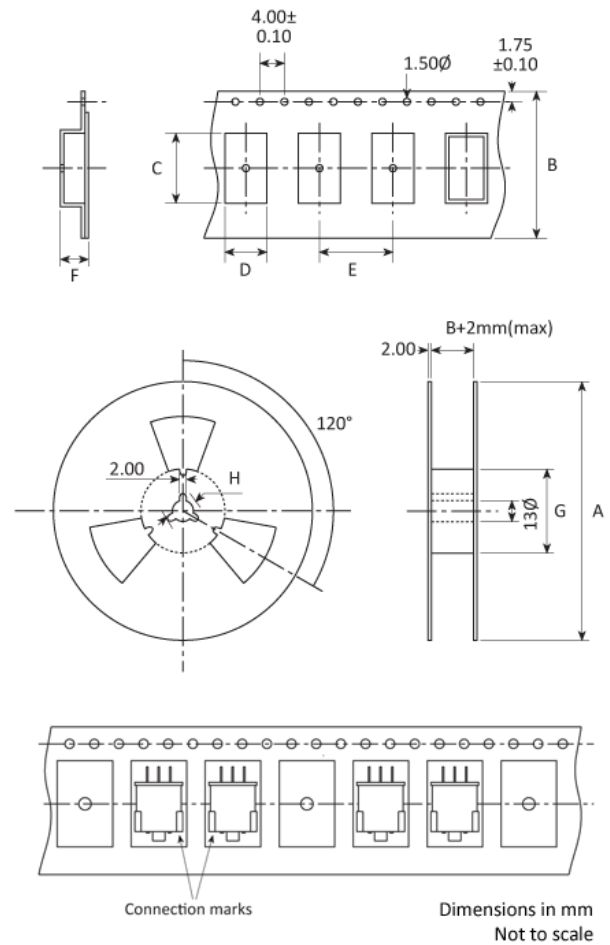
ORDERING INFORMATION

To request a quotation for the GMCF-21 21G30B please use the configurable options form to choose the options you require and then submit your configured product to our team. Our expert advisers are always happy to help with your requirements and can be contacted on +44 1460 256 100 or at sales@golledge.com.

Following product selection you will be issued with a seven character Golledge part number. Your Golledge part number is the internationally accepted Golledge manufacturing part number (MPN) that should be used for all project documentation, including bills of materials (BoMs) and purchase orders.

If you have any queries regarding any of our documentation our dedicated sales team will be happy to help.

TAPE & REEL SPECIFICATION



UM-1J - A:330 B:24 C:14.1 D:8.4 E:12 F:4.6 G:80 H:21

UM-5J - A:180 B:24 C:12.5 D:8.4 E:12 F:4.4 G:60 H:21

HANDLING & STORAGE

Human Body Model (HBM) 1A (250V to <500V)

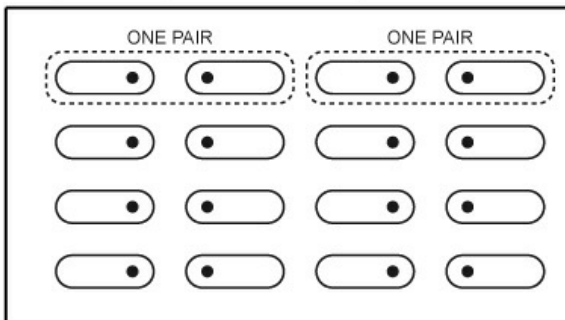


Moisture Sensitivity Level (MSL): 1 (or not applicable)

CONSTRUCTION

Resistance weld

Bulk-packed 4-pole filters: Pair alignment when boxed.



These filters are individually matched pairs. One filter is composed of two physical units, which have been factory-matched for optimum performance.

DO NOT MIX. Unmatched pairs will offer impaired performance.

For filters supplied in boxes, please refer to the above diagram.

Matched pairs may also be supplied in individual bags.

COMPLIANCE



Lead-free (< 0.1% by weight)



RoHS compliant with no exemptions. [See our](#)

[declaration](#)



REACH compliant. [See our statement](#)



Free of conflict minerals. [See our declaration](#)



Free of Halogens. [See our declaration](#)



Free of Ozone-depleting substances. [See our](#)

[declaration](#)