

GTXO-94L

3.3V 32.768kHz CMOS TCXO

- 32.768kHz
- Extremely low current consumption of 1.37 μ A
- \pm 5ppm frequency stability
- 3.3V supply



CONFIGURABLE OPTIONS

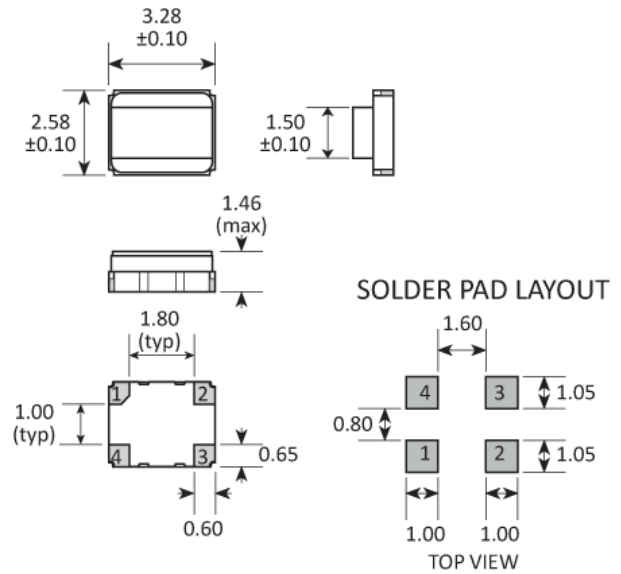
Parameter	Option Code
-----------	-------------

The GTXO-94L has no configurable options.

Please see the specifications table for more details or contact our team today if you have other specification requirements.

SPECIFICATIONS

Frequency	32.768kHz
Dimensions	3.3 x 2.6 x 1.46mm
Calibration tolerance	±1.5ppm max @ 25°C ±3°C
Operating temperature range	-40 to +85°C
Temperature stability	±5.0ppm max
Storage temperature range	-55 to +85°C
Supply voltage (V _{DD})	3.3V (±5%)
Supply current	1.37µA typ, 2.0µA max (no load)
Driving ability	15pF CMOS
Logic levels	'0' level = 0.4V max '1' level = V _{DD} -0.4V min
Waveform symmetry	40:60 @ 50%V _{DD} typ
Rise / fall time	100ns max
Frequency vs load	±0.2ppm max
Frequency vs supply	±0.2ppm max, V _{DD} ±5% ±1.0ppm/V max
Start up time	1s max @ 25°C, 3s max over -40 to +85°C
Ageing	±3.0ppm max 1st year
Reflow	±1.0ppm max @25°C, 24hrs after reflow
Timing error	±0.432s max/day ±12.96s max/month ±2.628mins max/year

PACKAGE DRAWING


PAD	CONNECTION
1	Enable / disable
2	Ground
3	Output
4	Supply

Dimensions in mm

ORDERING INFORMATION

To request a quotation for the GTXO-94L please use the configurable options form to choose the options you require and then submit your configured product to our team. Our expert advisers are always happy to help with your requirements and can be contacted on +44 1460 256 100 or at sales@golledge.com.

Following product selection you will be issued with a seven character Golledge part number. Your Golledge part number is the internationally accepted Golledge manufacturing part number (MPN) that should be used for all project documentation, including bills of materials (BoMs) and purchase orders.

If you have any queries regarding any of our documentation our dedicated sales team will be happy to help.

ENABLE / DISABLE FUNCTION

Input (pad 1)	Output (pad 3)
'0' level $V_{IL}=20\%V_{DD}$ max	Disabled
'1' level $V_{IH}=80\%V_{DD}$ min	Enabled

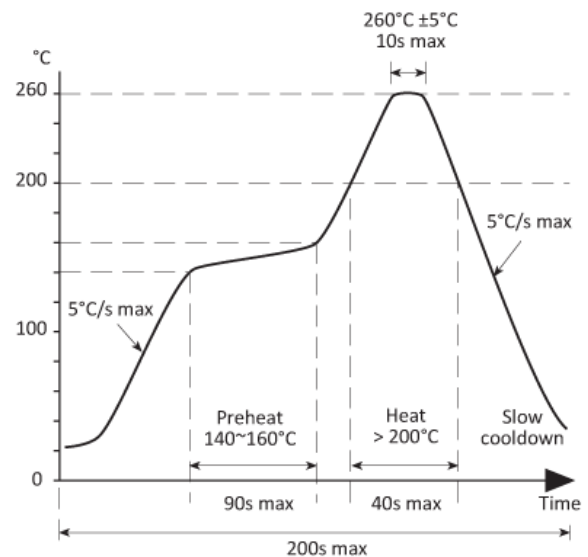
Pad 1 should not be allowed to float

MARKING

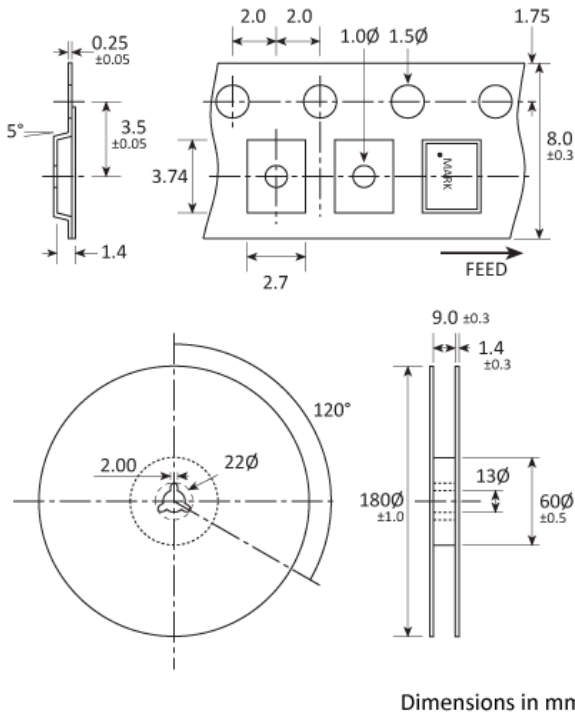
FREQUENCY T DC

Marking type: Laser
DC = Date code

SOLDERING PROFILE



TAPE & REEL SPECIFICATION



HANDLING & STORAGE



Human Body Model (HBM) 1A (250V to <500V)



Moisture Sensitivity Level (MSL): 1 (or not applicable)

CONSTRUCTION

Ceramic body with gold-plated pads
Metal lid, seam sealed

COMPLIANCE

Please refer to our **DOCUMENTS** section for more information.



Lead-free (< 0.1% by weight)



RoHS compliant with no exemptions.



REACH compliant.



Free of conflict minerals.



Free from halogens.



Free from ozone-depleting substances.